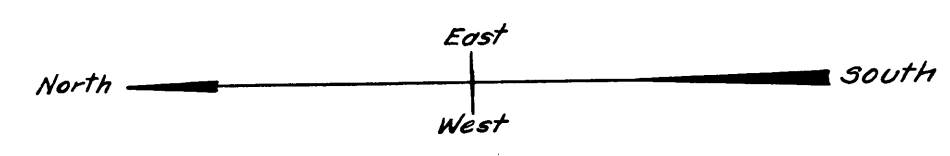
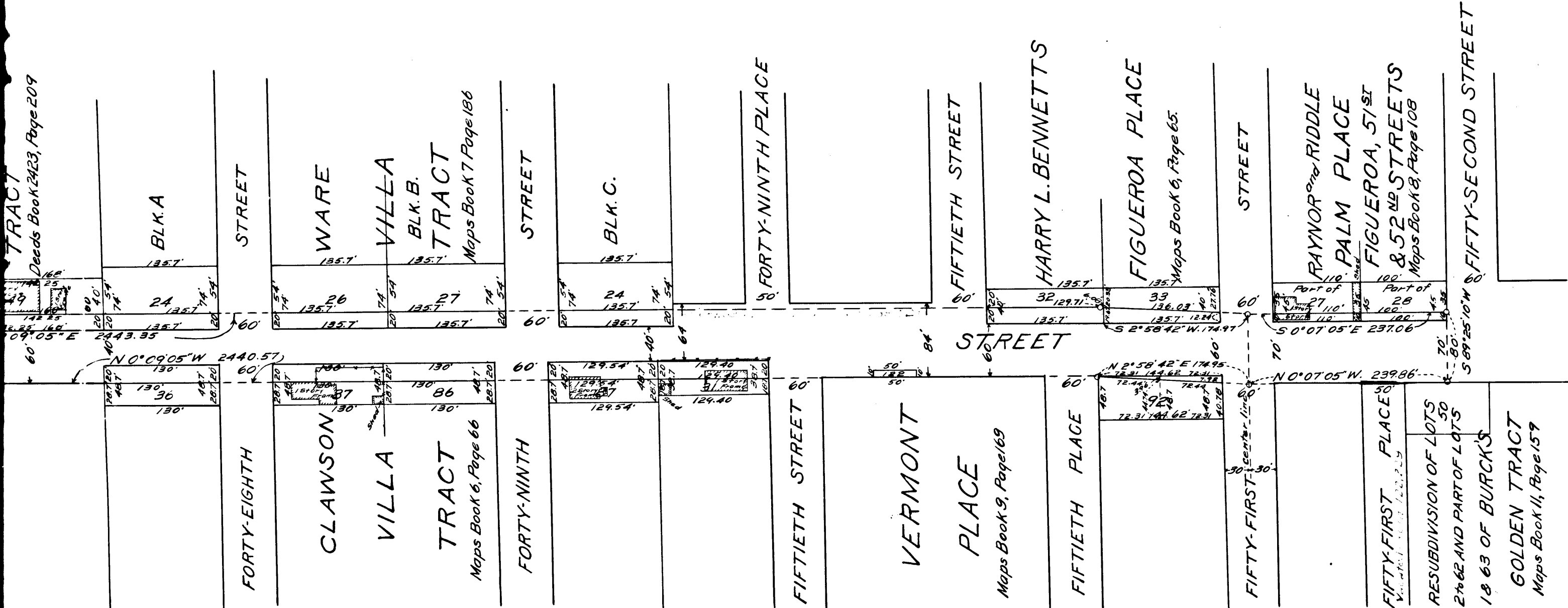


C.F. 88/2 -

TRACT Deeds Book 2423, Page 209



MAP
 SHOWING THE LAND TO BE CONDEMNED
 FOR THE WIDENING OF
HOOVER STREET
 FROM
 VERNON AVENUE TO FIFTY-SECOND STREET
 IN THE
CITY OF LOS ANGELES
 In accordance with Ordinances Nos 30531 and 30878 (New Series)
 Scale 1/4" = 100 Feet
 Homer Hamlin
 City Engineer
 November 1914

Note - Land to be condemned shown colored Red.
 Dotted lines and figures show property lines and dimensions
 in those cases where actual holdings differ from the recorded
 subdivisions

Case No. 21, 994
 City of Los Angeles, F. H. S. Maria Armanista Det.
 Files Dec. 30, 1914. = **Condemnation.**
 Filed July 1, 1915. No. 13-1111.
 Recorded July 22, 1915. 2440-285.
 " " Book 403-342.

2

C.F. 882 -

