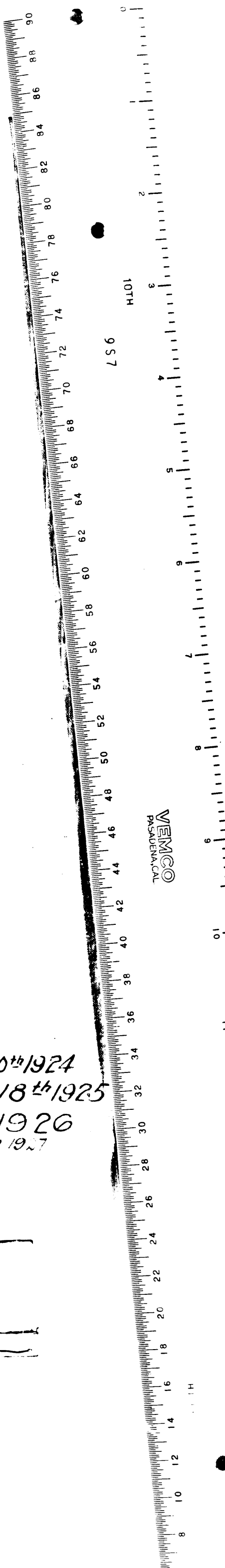
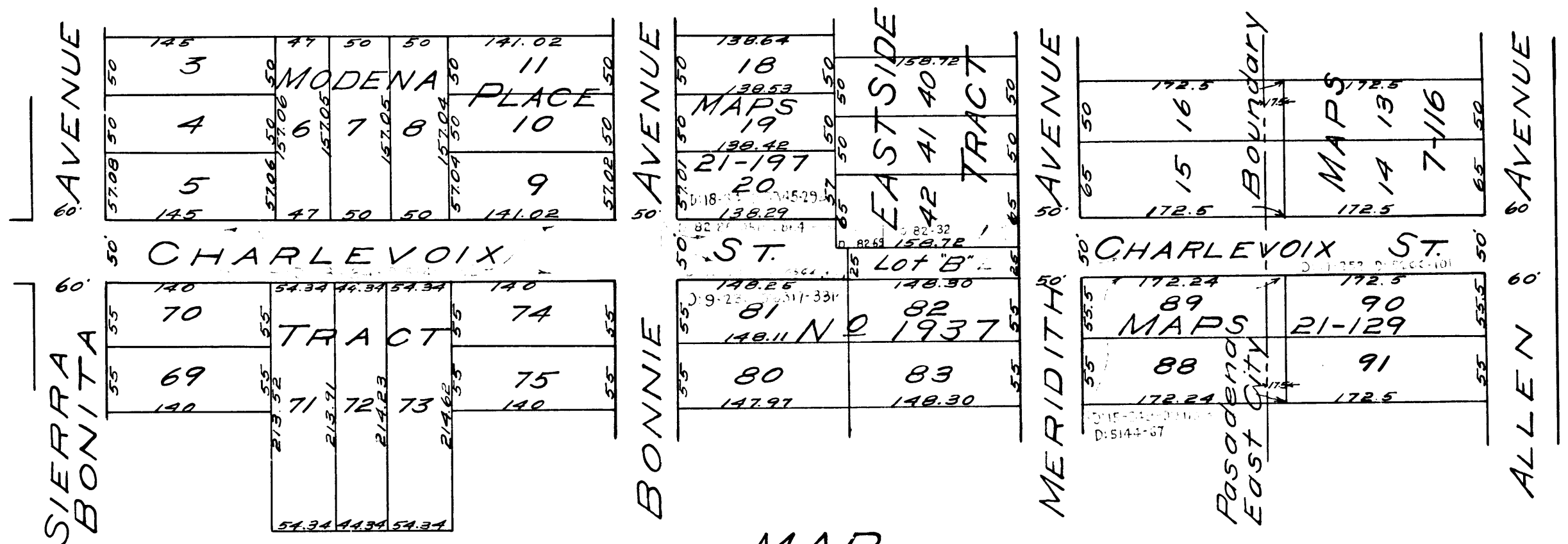


MEMCO PASADENA, CAL.



MAP

Showing landsought to be condemned for the opening and extending of CHARLEVOIX STREET from the west line of lot 42, East Side Tract as per map recorded in Book 7, page 116, of Maps, Records of Los Angeles County to the west line of Meridith Avenue, Pasadena, California.
 Pasadena, California; November, 1916.

R.V.Orbison, City Engineer.

Scale
 1 inch = 100 feet

Note-
 Orange tinting shows landsought to be condemned. Exhibit C:

This suit has been dropped by the City of Pasadena according to information received from Pasadena City Engineer on Jan. 16th 1923

Sup. Ct. Case No. B4456B. Filed Dec. 11, 1916. Pending May 10th 1924
 City of Pasadena vs Calvin S. Nyce, et al
 Pending May 1st 1926
 Interlocutory Judgment, Mar 5 1917.
 case pending May 1st 1921. Pending Mar 11, 1922

C. F. 886