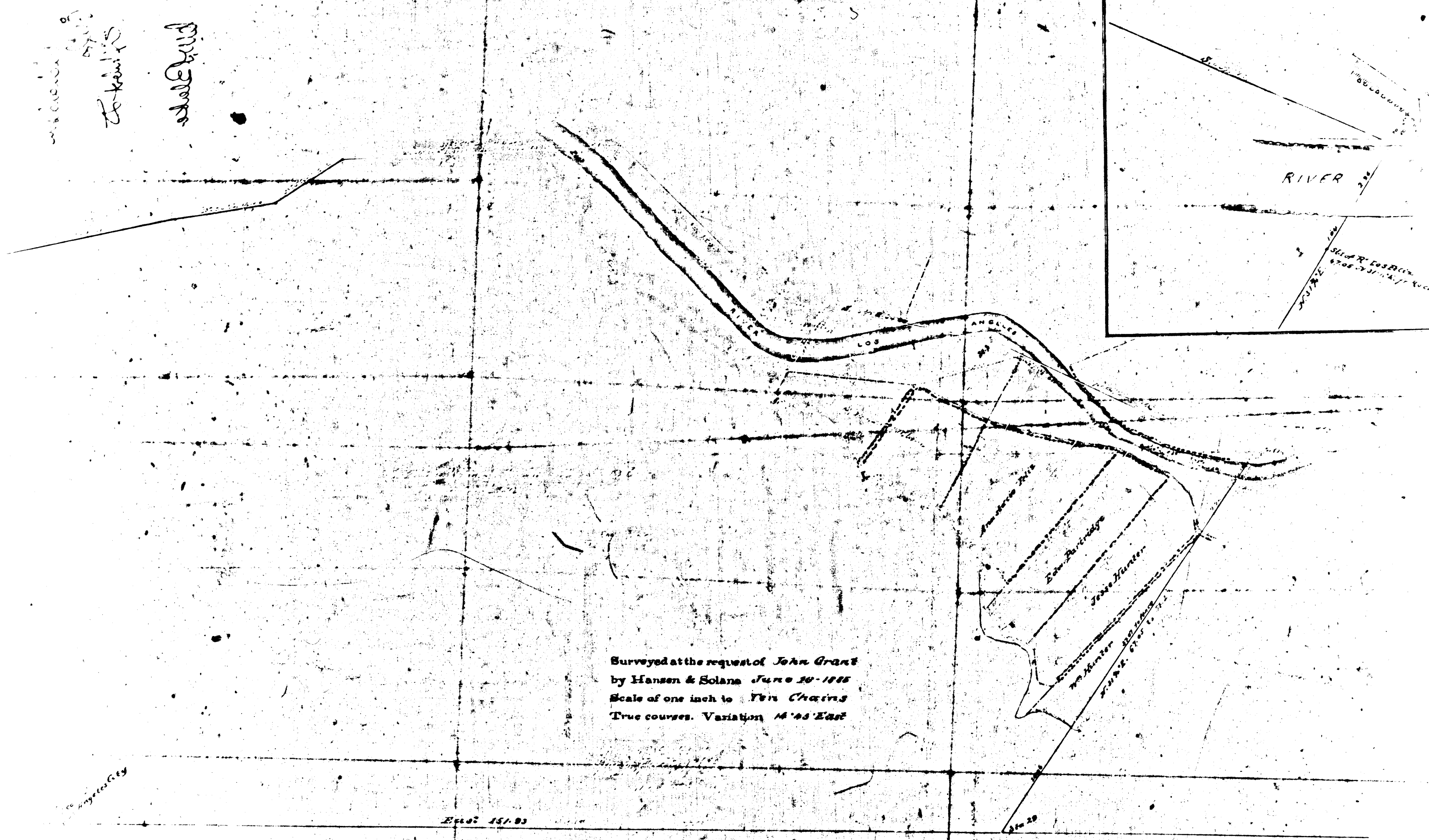
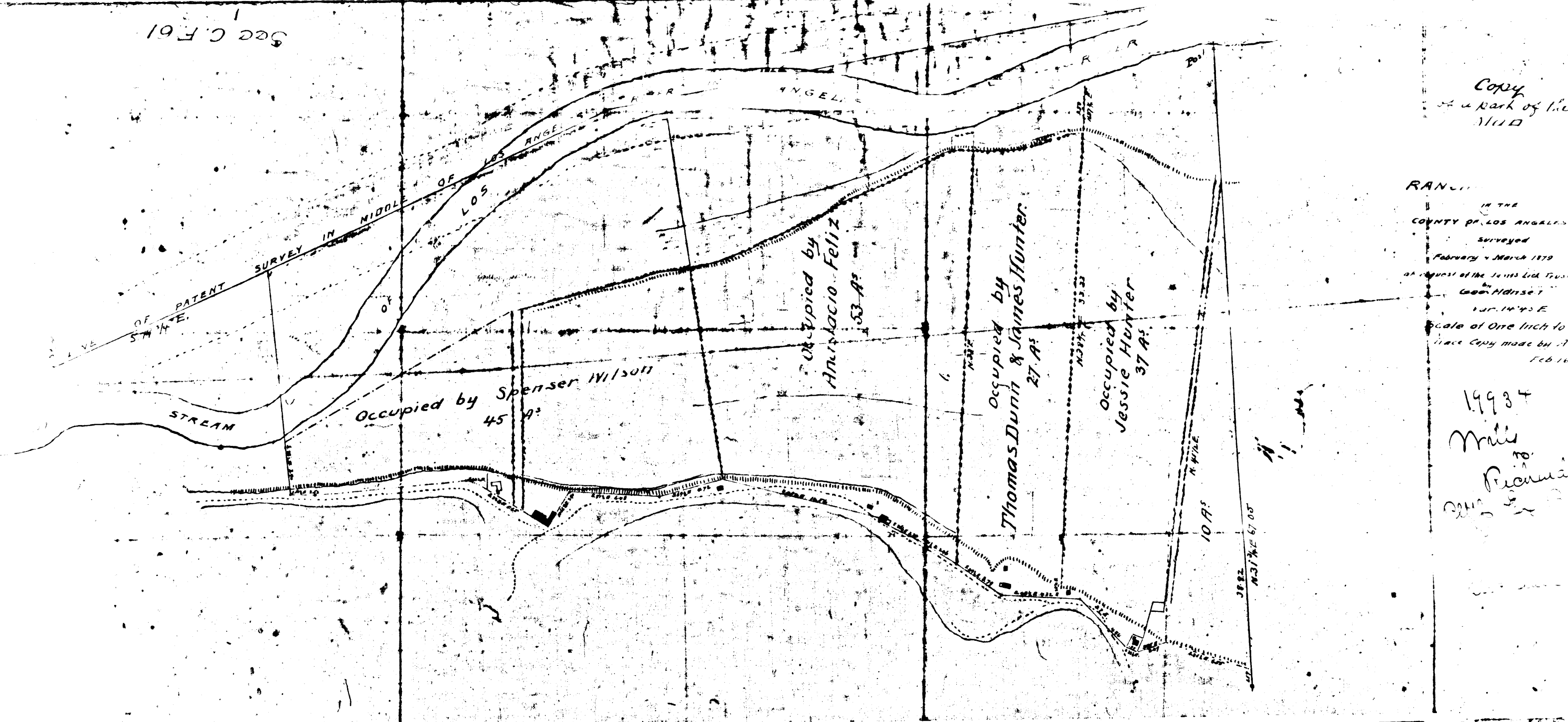


Sec C.F. 61

Copy of a map of the Wild

RANCHO IN THE COUNTY OF LOS ANGELES Surveyed February - March 1879 at request of the Joint Land Trust (Case No. 1155) S. 1/4 Sec. 10 T. 4 S. R. 10 E. Scale of One Inch to 50 Feet True Copy made by J. L. ... Feb 11

19934 Mills to ...



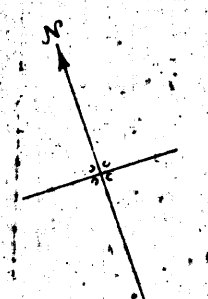
Surveyed at the request of John Grant by Hansen & Solana June 30-1878 Scale of one inch to 7500 Feet True courses. Variation 14° 45' East

I certify that this is a true copy of the original map. Feb. 11, 1879

Rancho San Rafael

RICHARDSON

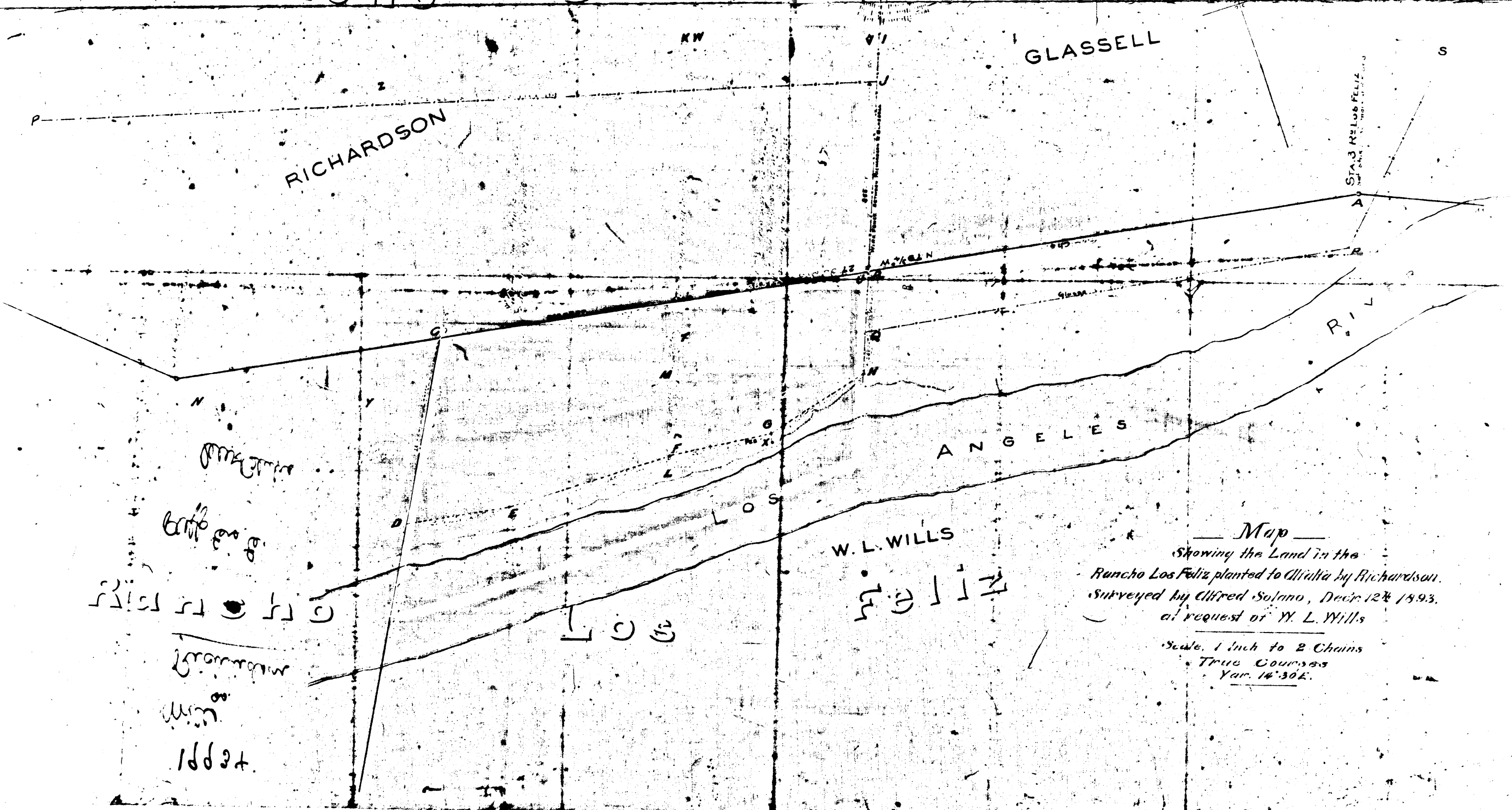
GLASSELL



ST. J. NELSON

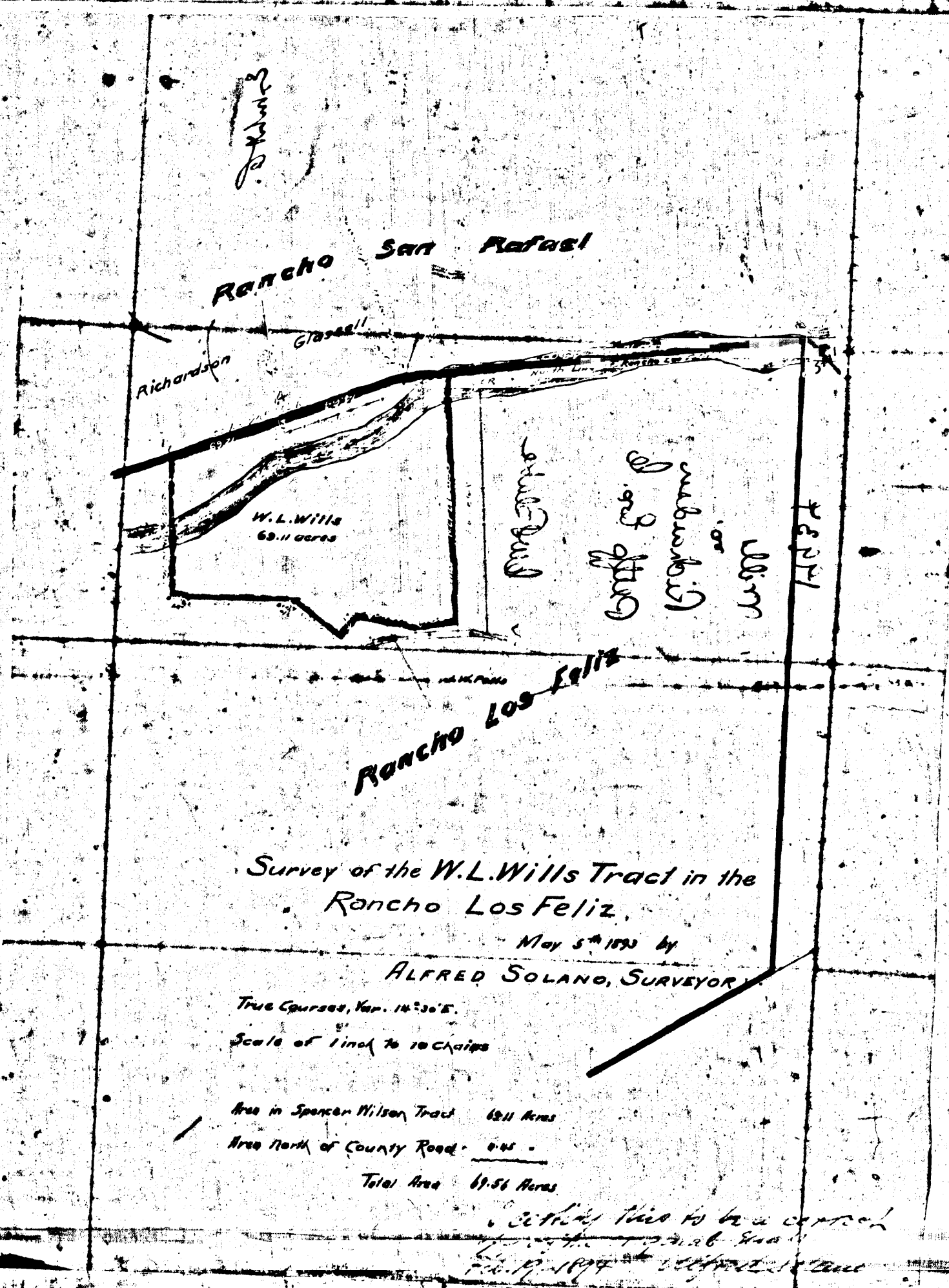
P. L. ...

Handwritten text at the top of the page, possibly a title or reference number.



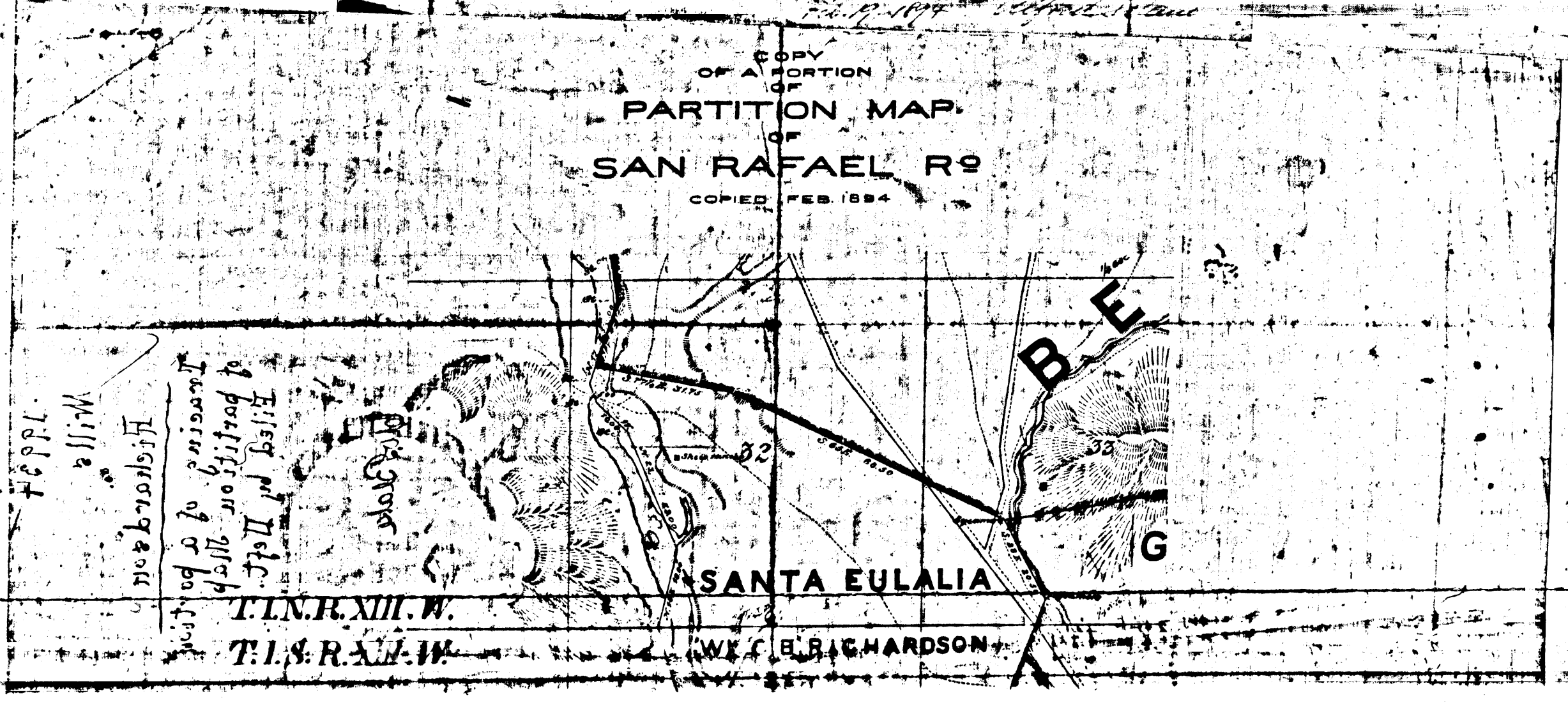
Handwritten notes on the left side of the top map, including the word 'MAGNITUDE' and other illegible scribbles.

Map
 Showing the Land in the
 Rancho Los Feliz planted to Alluvia by Richardson.
 Surveyed by Alfred Solano, Decr 12th 1893.
 at request of W. L. Wills
 Scale, 1 inch to 2 Chains
 True Courses
 Var. 16' 30"E.



Survey of the W.L. Wills Tract in the
 Rancho Los Feliz.
 May 5th 1893 by
 ALFRED SOLANO, SURVEYOR.
 True Courses, Var. 16' 30"E.
 Scale of 1 inch to 20 chains
 Area in Spencer Wilson Tract 68.11 Acres
 Area North of County Road 0.01
 Total Area 68.12 Acres

COPY
 OF A
 PORTION
 PARTITION MAP
 OF
 SAN RAFAEL R⁹
 COPIED FEB 1894



Handwritten notes on the bottom left, including 'Wills', '1889', and 'T.13.R.11.W.'.

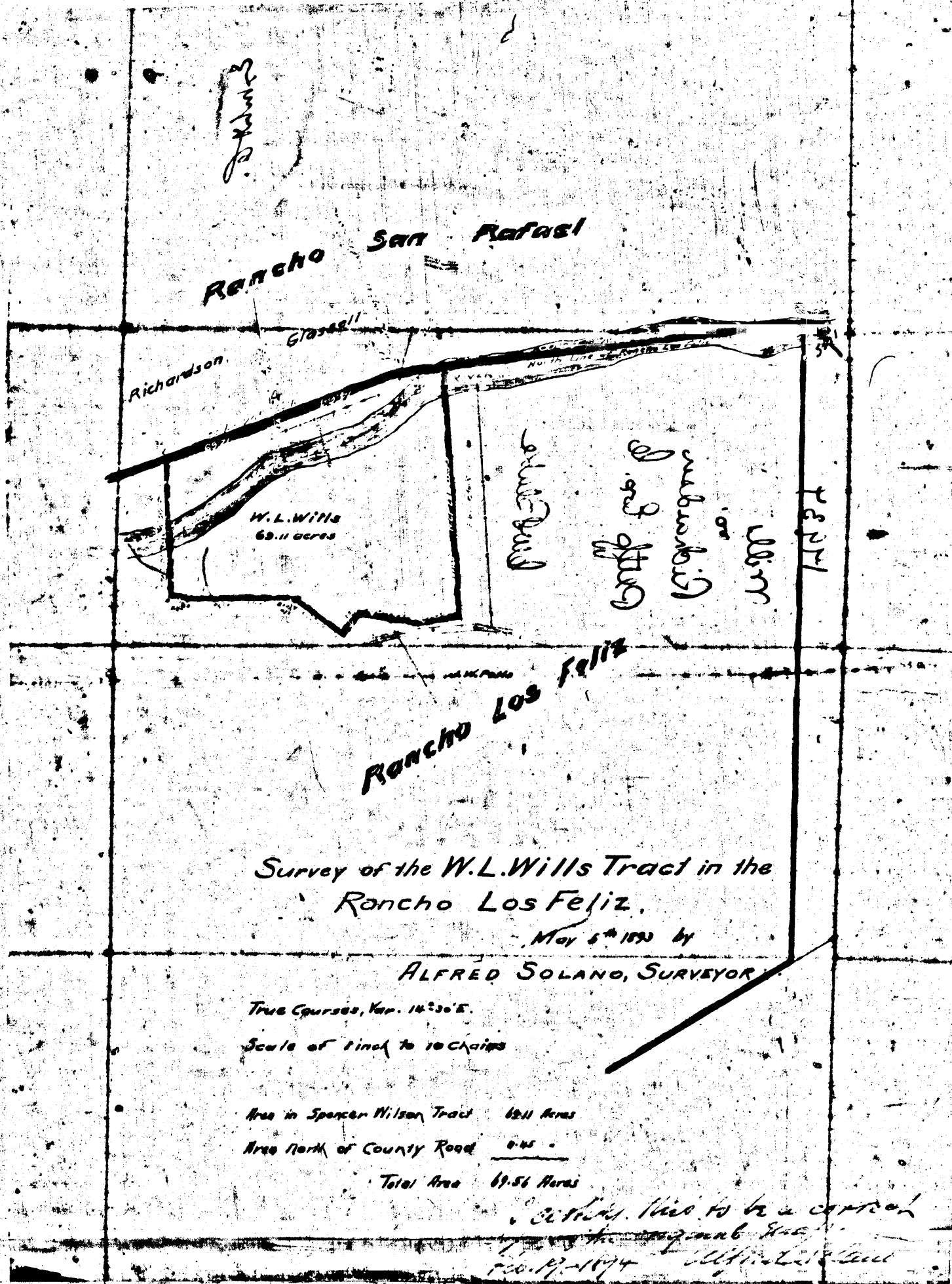


Map
1883
1884

W. L. WILLS

Feliz

Map
 Showing the Land in the
 Rancho Los Feliz planted to Alluvia by Richardson.
 Surveyed by Alfred Solano, Decr. 12th 1893.
 at request of W. L. Wills
 Scale 1 inch to 2 Chains
 True Courses
 Var. 14° 30' E.



COPY
 OF A PORTION
 OF
 PARTITION MAP
 OF
 SAN RAFAEL R^o
 COPIED FEB. 1884

