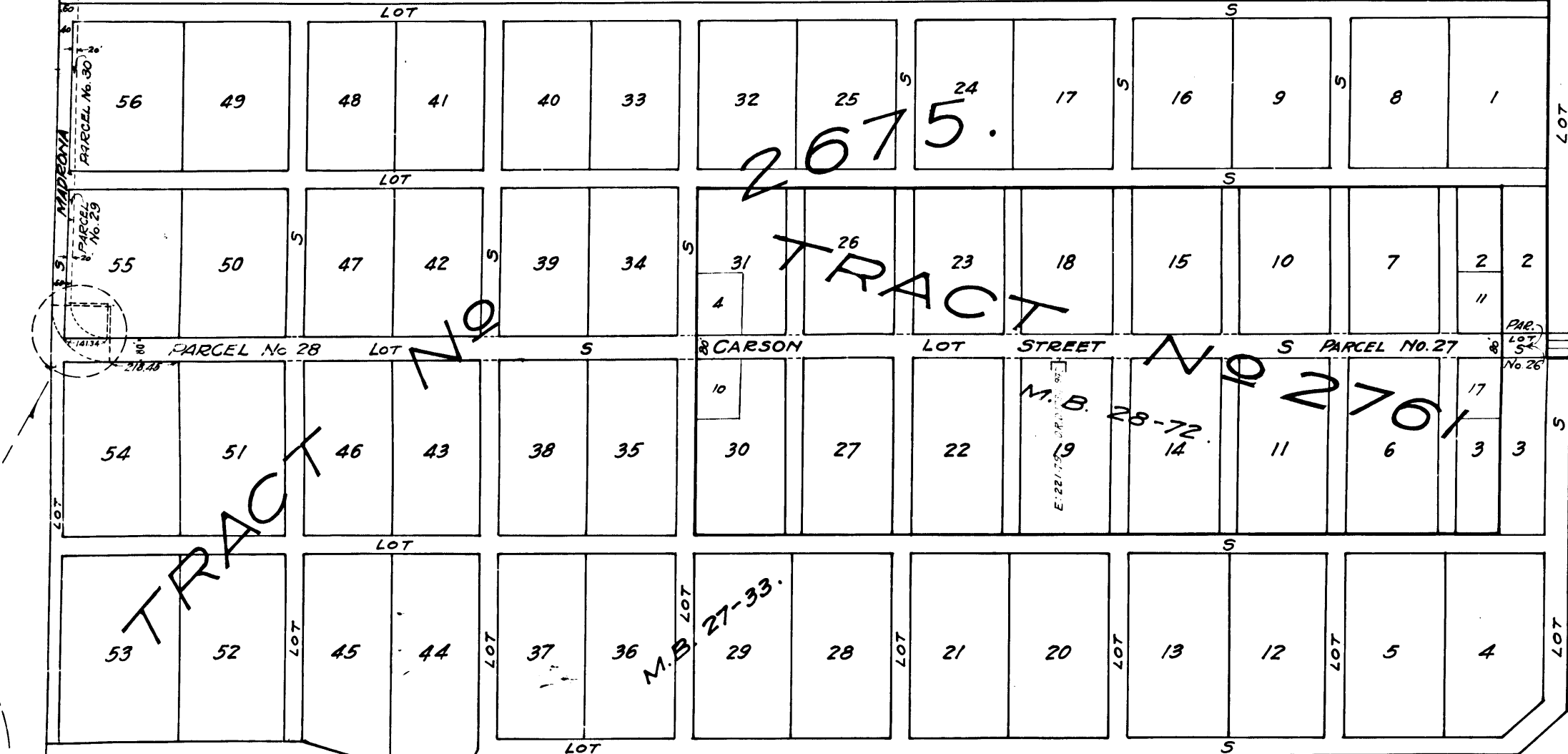


PORTION OF
ANA JOSEFA DOMINGUEZ DE GUYER
2279.35 ACRE ALLOTMENT
Superior Court Case No. 3284

North Line of
Superior Dominguez
1021.8 Acre Allotment
Sup. Ct. Case No. 3284

Superior Dominguez
1021.8 Acre Allotment
Superior Court Case No. 3284



TRACT No. 2675

TRACT No. 2701

M.B. 27-33

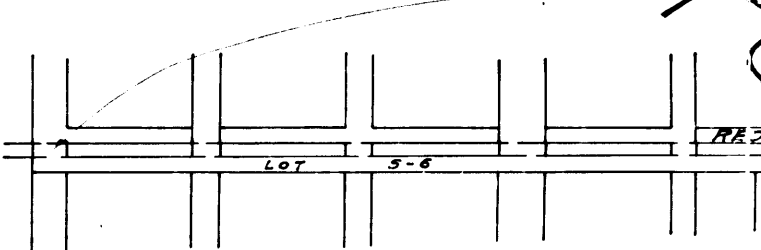
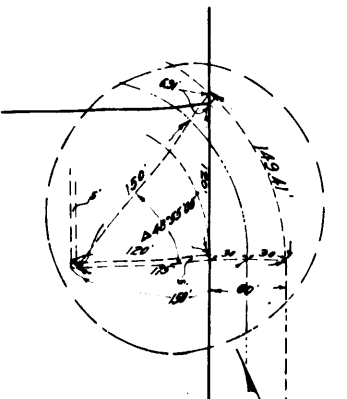
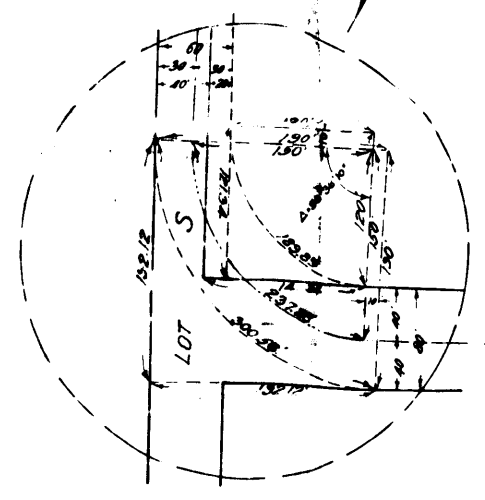
TRACT No. 308

M.B. 23-83

1952

302

C.F. 897



C.F. 897

Northerly line Susana Dominguez Allotment (730.61 Acres)

LOT B TRACT NO. 1427. M.B. 22-82-83.

SUSANA

730.61 ACRE

Superior Court Case

DOMINGUEZ

ALLOTMENT.

No. 3284.

PORTION OF ANA JOSEFA DOMINGUEZ DE GUYER.

2279.35 ACRE

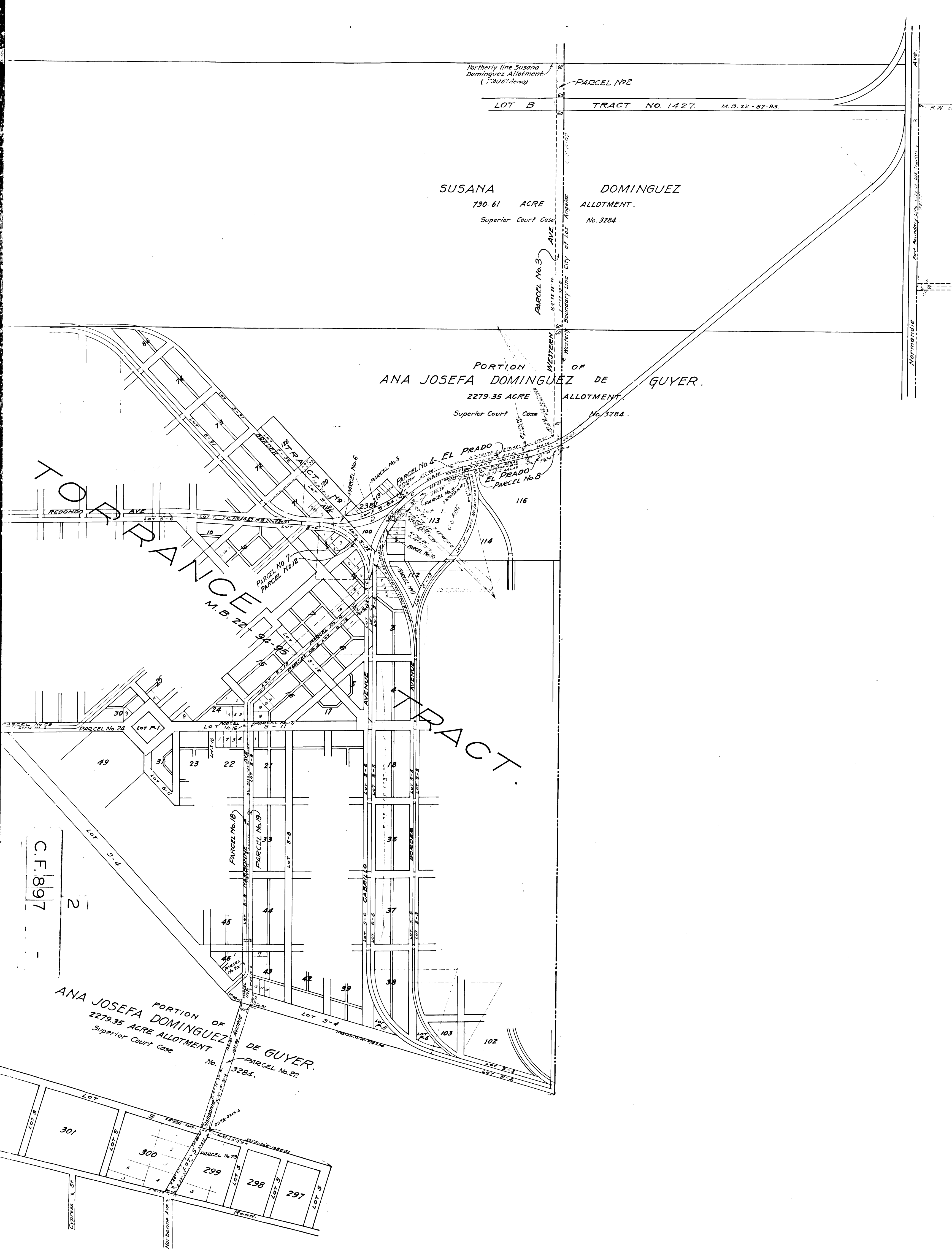
Superior Court Case No. 3284.

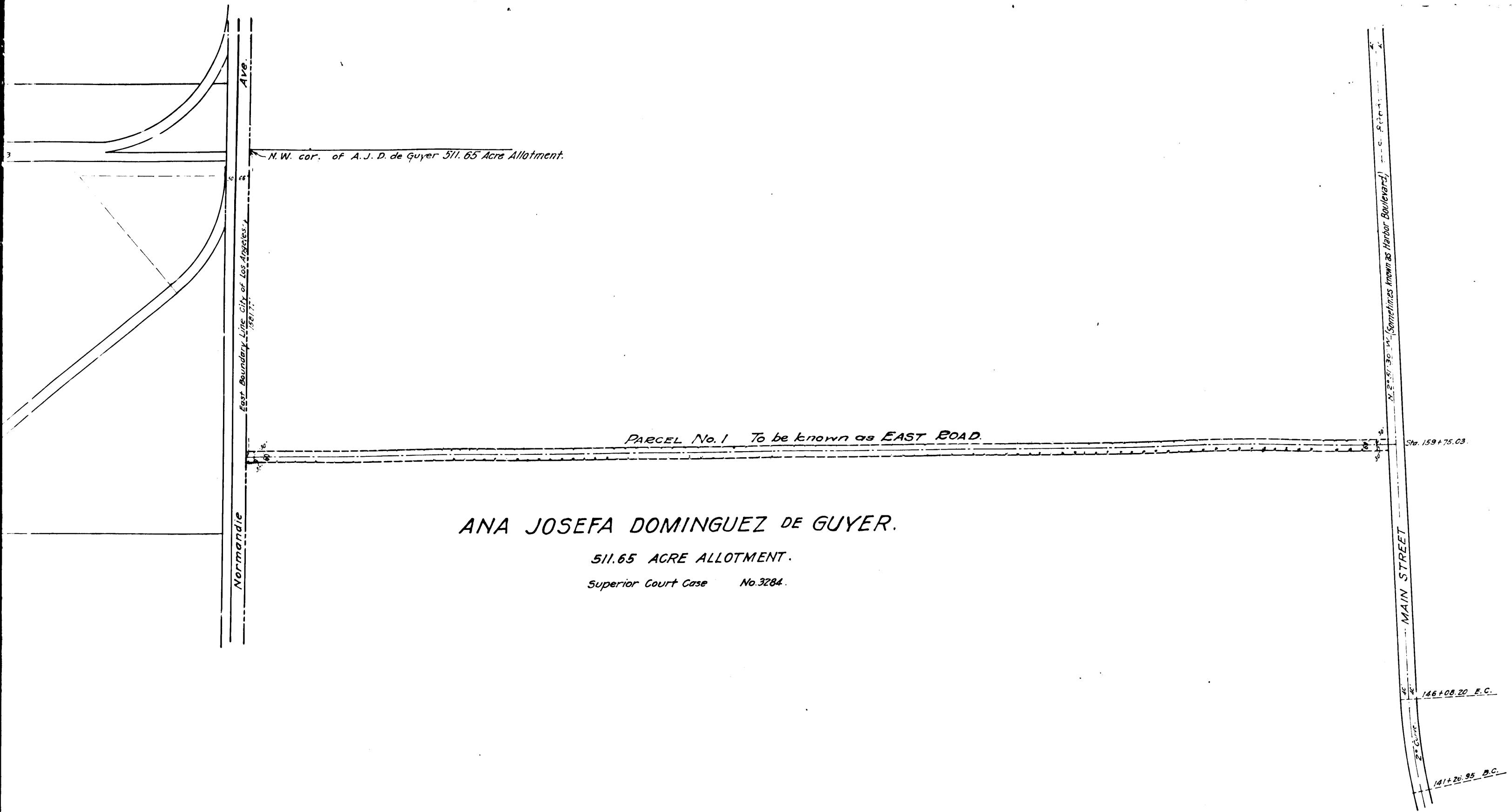
FRANCE M.B. 22-

TRACT

PORTION OF ANA JOSEFA DOMINGUEZ DE GUYER. 2279.35 ACRE ALLOTMENT Superior Court Case No. 3284. PARCEL No. 22

C.F. 897

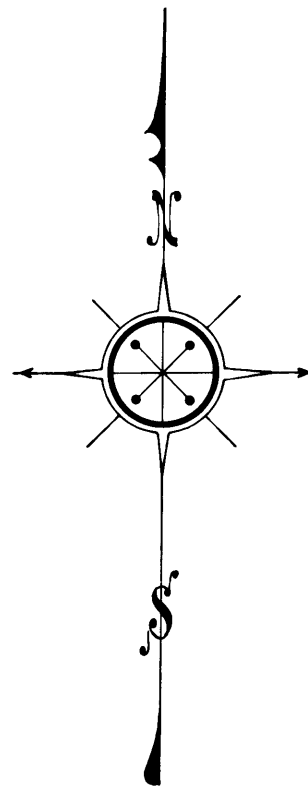




ANA JOSEFA DOMINGUEZ DE GUYER.

511.65 ACRE ALLOTMENT.

Superior Court Case No. 3284.



MAP

SHOWING LAND SOUGHT TO BE CONDEMNED
FOR OPENING OF
NARBONNE AVENUE, BORDER AVENUE, EL PRADO
CABRILLO AVENUE, WESTERN AVENUE, CARSON
STREET, MADRONA AVENUE AND EAST ROAD.

July 1916

J. E. Rockhold

County Surveyor.

SCALE: 1"=300'

Compiled from Surveys and Records of Los Angeles County.

Platted & Traced by H.W.S. - July 13-1916.
Checked by K.M.D. Oct. 13-1916.
Revised by G.L.U. & F.W.S. Jan. 12-1917.
Checked by K.M.D. Jan. 16-1917.
R.D.F.B. 5-209-16-22.

Establishment names see D.37-9100 4

C.F. No. 897

Superior Court Case No. 3284

County of Los Angeles, Plff.

vs.

Dominguez Land Co. et al. Defds.

Condemnation Case No. 10000

For Judgment in Favor of Plff. See D.2734 P. 10000

Streets Condemned shown in red.

For street names see D.10000

Judgment entered as per D.10000 10000

C.F. 897

3