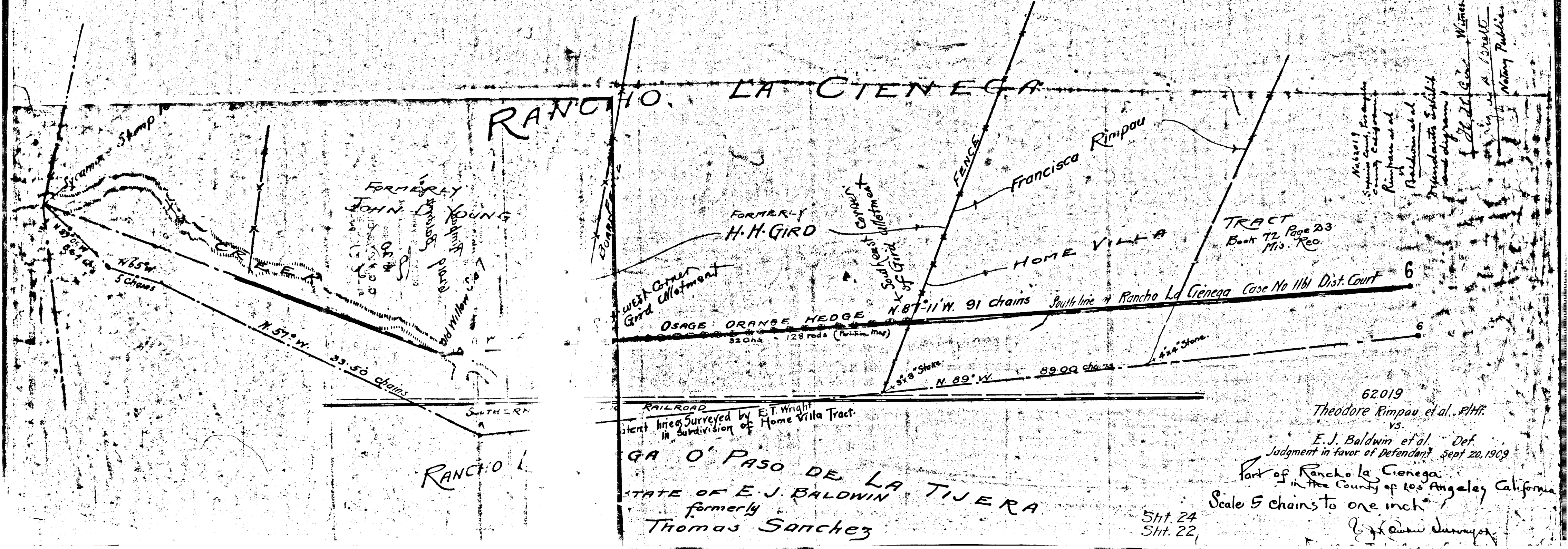


West



East

RANCHO LA CIENEGA



62019
 Theodore Rimpau et al. Plff.
 vs.
 E. J. Baldwin et al. Def.
 Judgment in favor of Defendant Sept 20, 1909
 Part of Rancho La Cienega
 in the County of Los Angeles California
 Scale 5 chains to one inch
 J. J. [Signature]

RANCHO LA CIENEGA
 STATE OF CALIFORNIA
 formerly
 Thomas Sanchez

Sht. 24
 Sht. 22