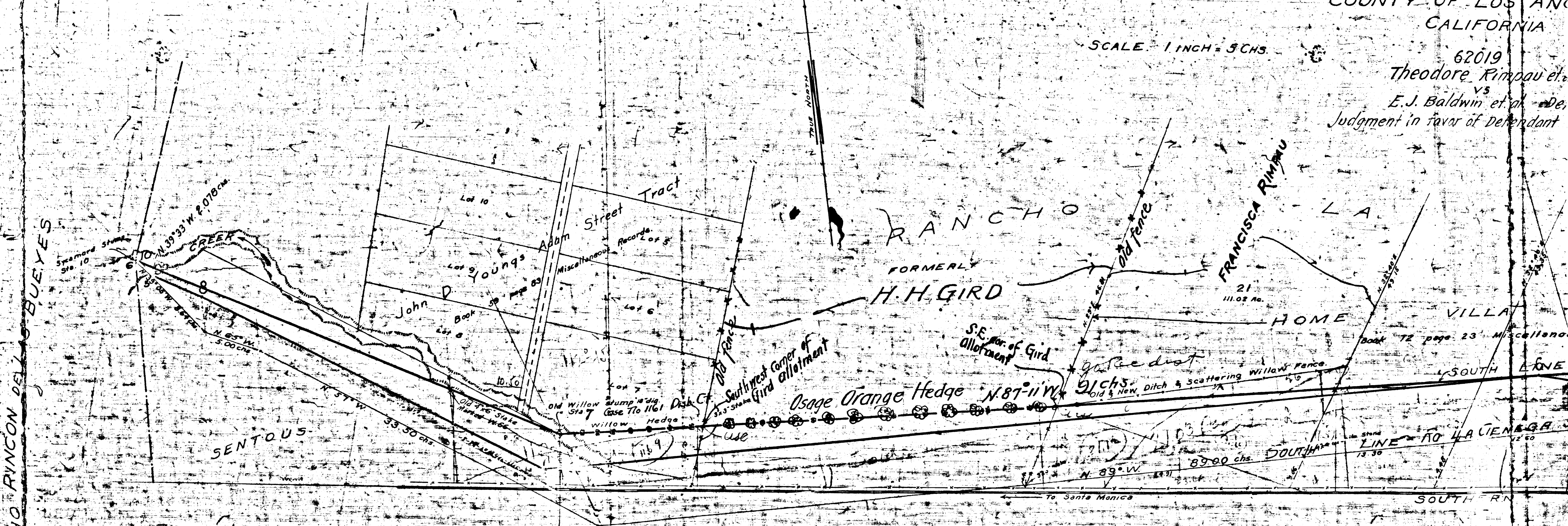


MAP
 SHOWING THE NORTHERLY
 RANCHO LA CIENEGA O' PASO
 IN THE
 COUNTY OF LOS ANGELES
 CALIFORNIA

SCALE 1 INCH = 5 CHS.

62019
 Theodore Rimpau et al
 vs
 E. J. Baldwin et al
 Judgment in favor of Defendant



RANCHO LA CIENEGA O' PASO DE
 FORMERLY THOMAS SANCHEZ
 NOW E. J. BALDWIN