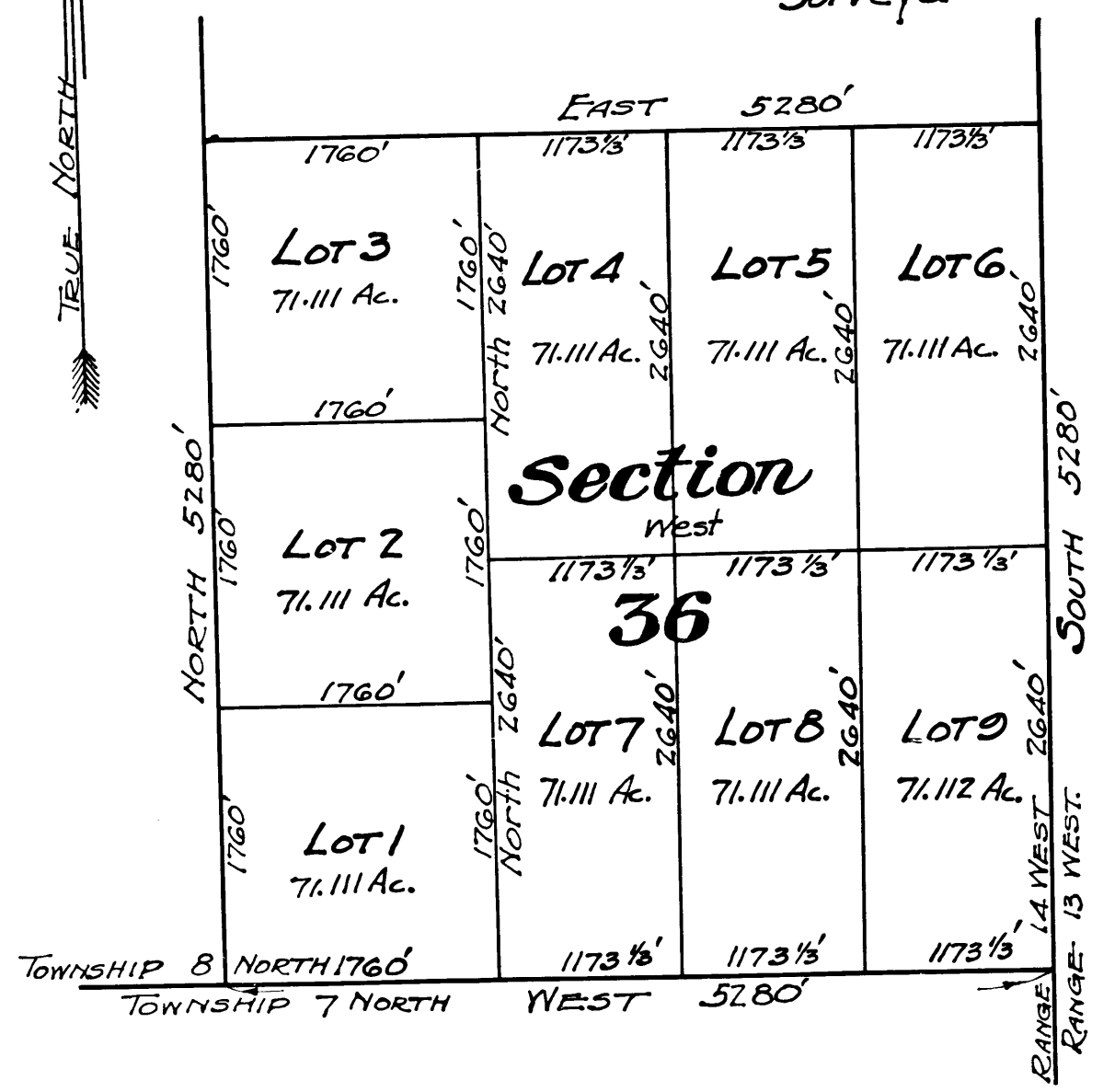


5-15-17  
 Probate Case No 31835  
 being Decree of Distribution-List of Executors Allowance  
 Dated 11-15-31-Recorded in D:6508-37

MAP  
 of the partition  
 of  
 SECTION 36 TOWNSHIP 8 NORTH, RANGE 14 WEST  
 SAN BERNARDINO BASE & MERIDIAN  
 in the  
 County of Los Angeles, California  
 belonging to the  
 Estate of Eleanor R. Lawrence deceased.  
 platted in May 1917  
 Scale 1000' = 1 inch by V. J. Rowan  
 Surveyor



See C. S. Map No 3213

C. F. 899

