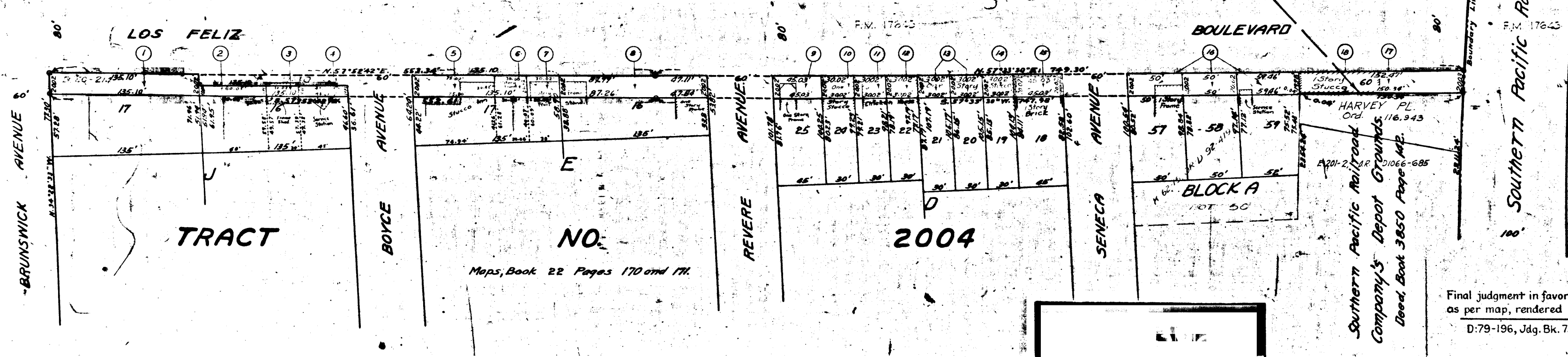
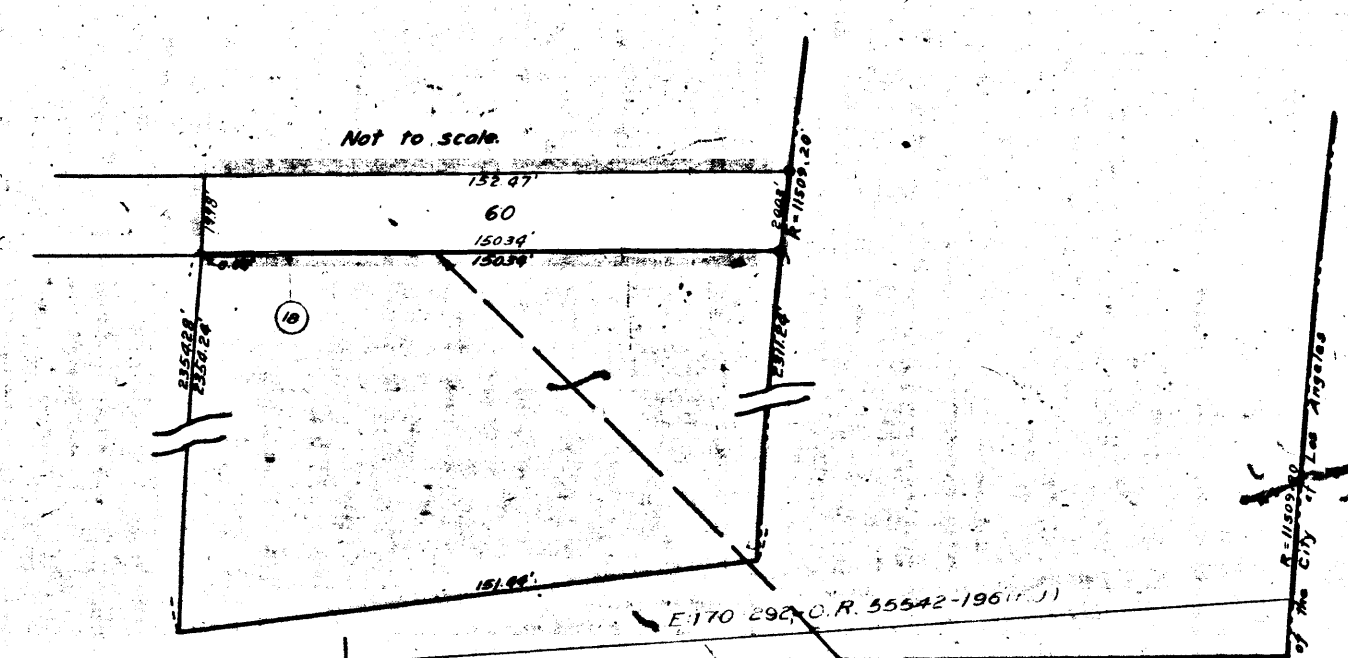
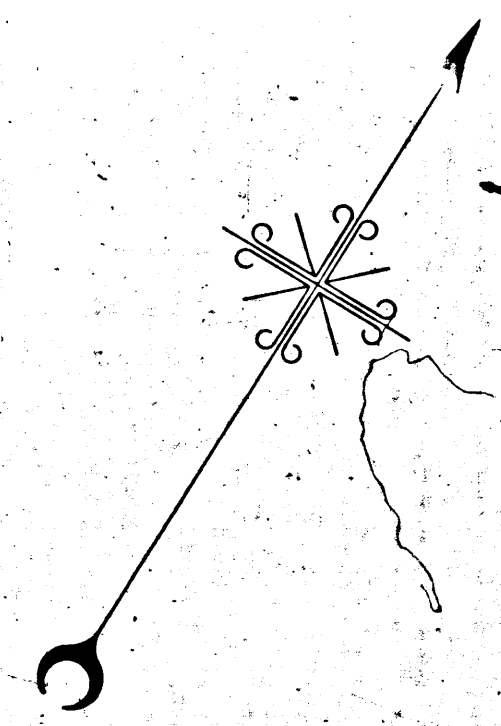


511 10



MAP
SHOWING THE LAND TO BE CONDEMNED
FOR THE WIDENING OF
LOS FELIZ BOULEVARD
BETWEEN THE
EASTERLY BOUNDARY LINE OF THE
CITY OF LOS ANGELES
AND
BRUNSWICK AVENUE
IN THE
CITY OF LOS ANGELES, CAL.

In accordance with Ordinances Nos. 51350 and 52118 New Series
H. A. Van Norman, City Engineer. July 1925.

Scale: 1/4" = 10'

Note
Land to be condemned shown colored red.
Broken lines and figures show property
holdings in cases where they differ from
recorded subdivisions.

The figures in circles indicate the parcel numbers as
set forth in Paragraph IX of the complaint.

Superior Court Case No. 181528

Suit for Condemnation

Filed Oct. 21st 1925

City of Los Angeles, Plaintiff

Vs.

Paul Mertens et al. Defendants.

Pending Nov. 11, 1926

Pending Apr. 1, 1927

Interlocutory decree rendered

Oct. 17, 1927 - Judg. Bk. 67-18

Final judgment in favor of Plaintiff,
as per map, rendered June 2, 1930.
D:79-196, Jdg. Bk. 753-157

Southern Pacific Railroad Company's Right-of-Way.