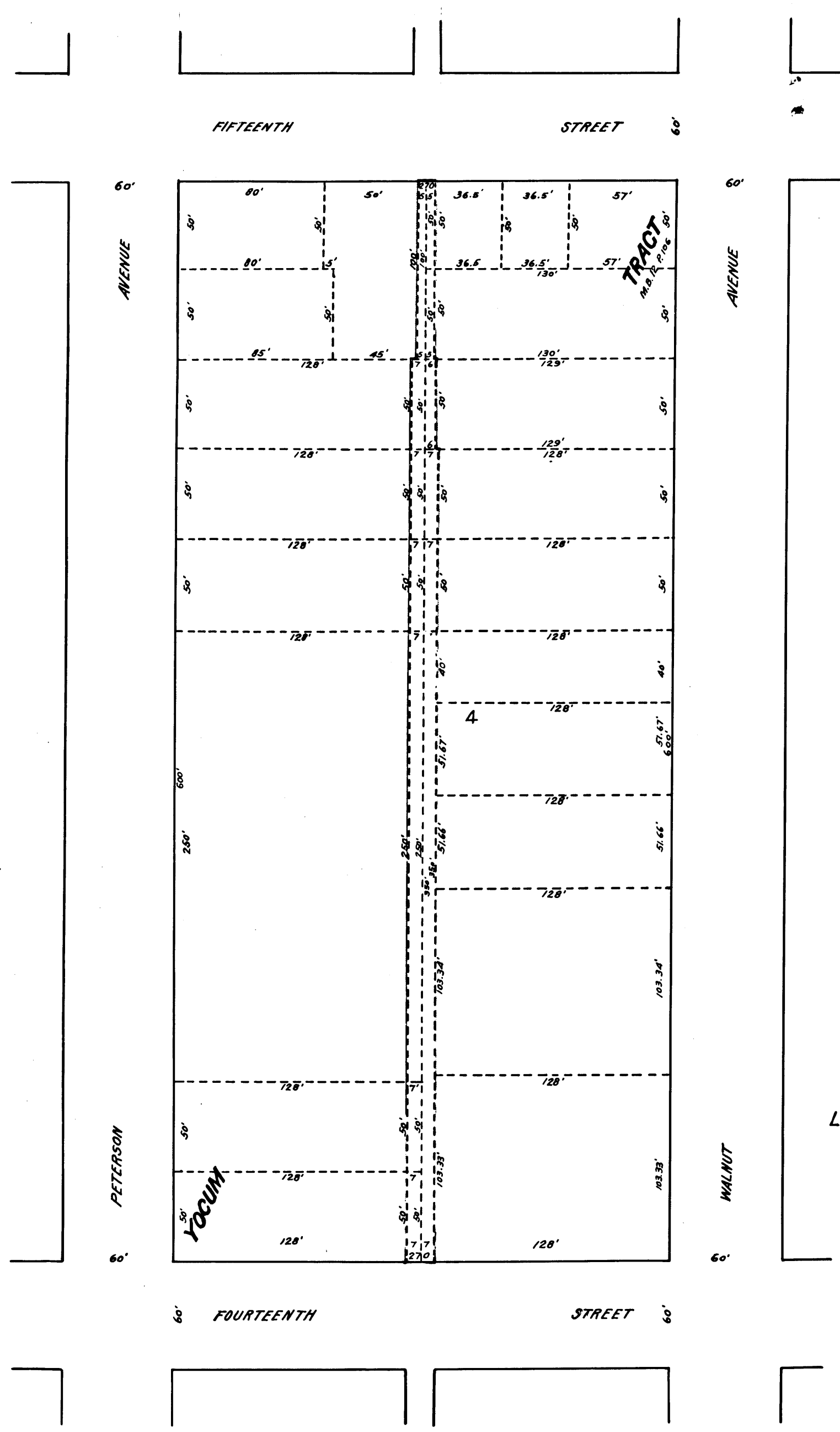
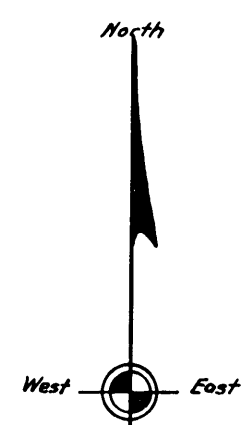


Plat 30
A-10



C.F. 1306 -



Scale 1 inch = 50 feet

Land to be taken outlined in red.

Superior Court Case No. 181964
 Suit for Condemnation
 Filed Oct. 27th 1925
 City of Long Beach, Plaintiff
 Vs.
 Johnston Bleakley, et al. Def.

Pending May 1, 1926.
 Interlocutory judgment as per
 map, rendered Feb. 11th 1927
 Judg. Bk 633-235
 Pending Apr. 7th 1927
 Final judgment in favor of Pl'tff.
 as per map, rendered Oct. 18, 1927.

D:62-72, O.R.7725-122
 Sht. 30