

portion of the
Miscellaneous Records,
Book 97, Page 97

PRAGER TRACT
Book 97, Page 97

CALLAGHAN
4 Story Brick

TRACT NO. 1769
Maps, Book 22, Page 78

1 Story Brick
Garage

2 Story Brick
1 Story Brick

CONSUELO AND BRODRICK
SUBDIVISIONS OF THE
CELIS VINEYARD TRACT
Miscellaneous Records, Book 5,
Page 89

ALLEY

ALLEY

30° W 2545.25'

HILL 92'

Washington Ord. 68401.

100'

MAIN 100'

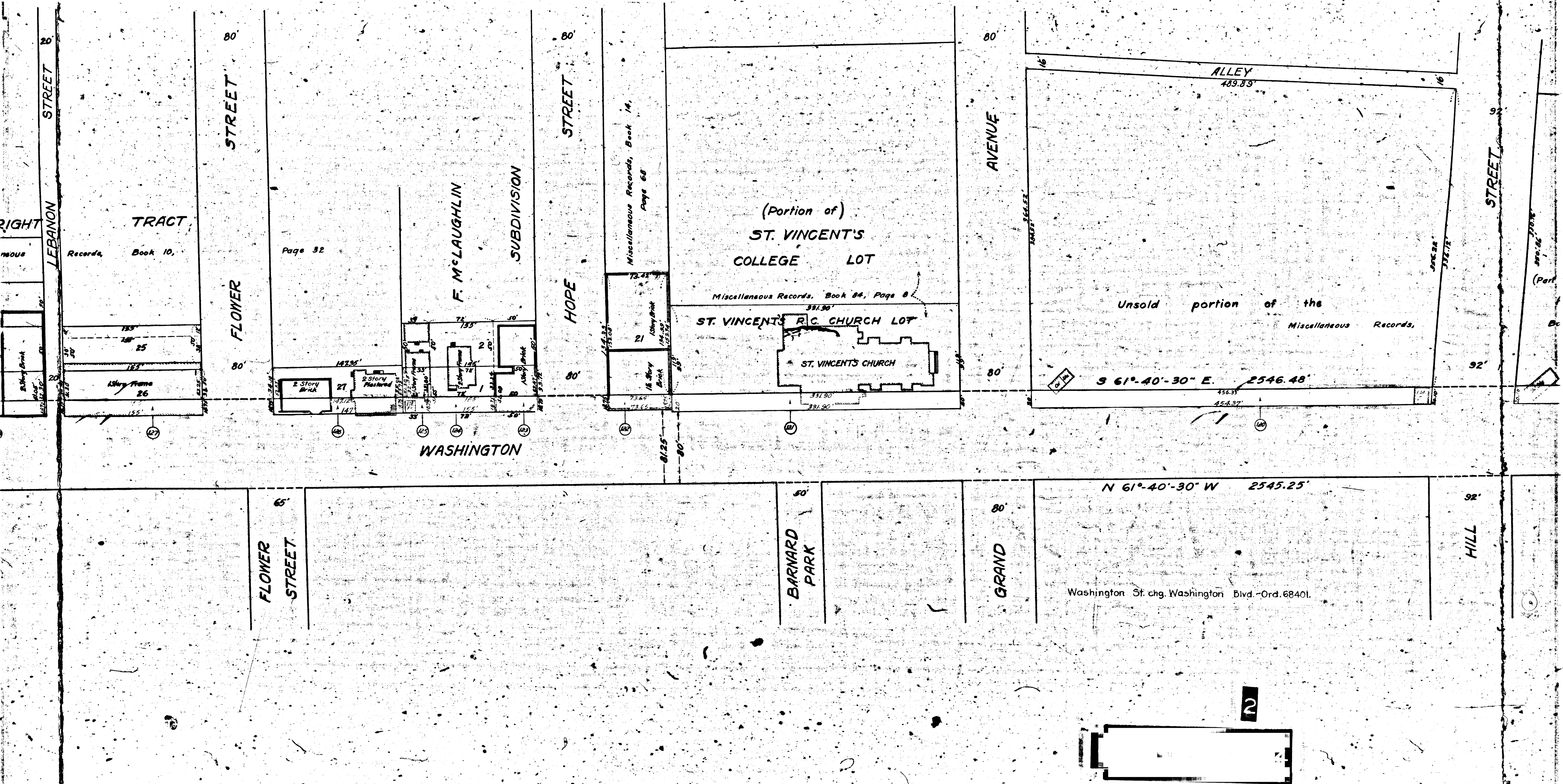
N 61°-06'-15" W

LOS ANGELES 80'

1075.03'

ALLEY

FOR CONTINUATION SEE SHEET NO. 5



RIGHT LEBANON STREET 26'
Records, Book 10,
TRACT
155' 25'
183'
155' 26'
155' 26'
155' 26'

80' FLOWER STREET
Page 32
F. McLAUGHLIN SUBDIVISION
27 2-story Brick
28 2-story Plastered
29 2-story Frame
30 2-story Brick
31 2-story Brick
32 2-story Brick
33 2-story Brick
34 2-story Brick
35 2-story Brick
36 2-story Brick
37 2-story Brick
38 2-story Brick
39 2-story Brick
40 2-story Brick
41 2-story Brick
42 2-story Brick
43 2-story Brick
44 2-story Brick
45 2-story Brick
46 2-story Brick
47 2-story Brick
48 2-story Brick
49 2-story Brick
50 2-story Brick
51 2-story Brick
52 2-story Brick
53 2-story Brick
54 2-story Brick
55 2-story Brick
56 2-story Brick
57 2-story Brick
58 2-story Brick
59 2-story Brick
60 2-story Brick
61 2-story Brick
62 2-story Brick
63 2-story Brick
64 2-story Brick
65 2-story Brick
66 2-story Brick
67 2-story Brick
68 2-story Brick
69 2-story Brick
70 2-story Brick
71 2-story Brick
72 2-story Brick
73 2-story Brick
74 2-story Brick
75 2-story Brick
76 2-story Brick
77 2-story Brick
78 2-story Brick
79 2-story Brick
80 2-story Brick
81 2-story Brick
82 2-story Brick
83 2-story Brick
84 2-story Brick
85 2-story Brick
86 2-story Brick
87 2-story Brick
88 2-story Brick
89 2-story Brick
90 2-story Brick
91 2-story Brick
92 2-story Brick
93 2-story Brick
94 2-story Brick
95 2-story Brick
96 2-story Brick
97 2-story Brick
98 2-story Brick
99 2-story Brick
100 2-story Brick

80' HOPE STREET
Miscellaneous Records, Book 14, Page 68
73.41'
21 1-story Brick
16-story Brick
73.64'
73.66'
81.25'
80'
331.90'
331.90'
(Portion of)
ST. VINCENT'S COLLEGE LOT
Miscellaneous Records, Book 84, Page 8
ST. VINCENT'S R.C. CHURCH LOT
ST. VINCENT'S CHURCH
331.90'
331.90'
331.90'

80' AVENUE
ALLEY 489.83'
16'
16'
92'
92'
Unsold portion of the Miscellaneous Records,
9 61°-40'-30" E. 2546.48'
456.33'
454.37'
92'

WASHINGTON
65' FLOWER STREET
BARNARD PARK 50'
80' GRAND AVENUE
N 61°-40'-30" W 2545.25'
Washington St. chg. Washington Blvd. - Ord. 68401.
HILL STREET 92'

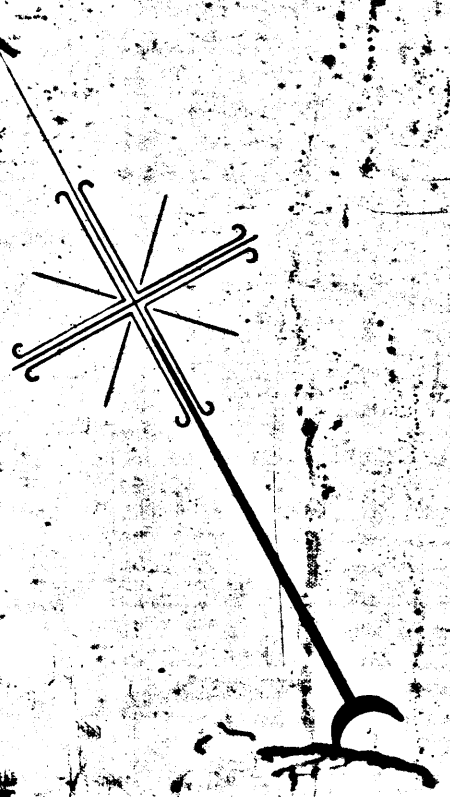
2

O. and W. WASHINGTON STREET
SHEET No. 4

A-3100

A-3100

RETURN TO CITY ENGINEER & SURVEYOR
CITY OF LOS ANGELES
BOULEVARD OF THE



EIGHTEENTH STREET

STREET

WRIGHT TRACT

Miscellaneous Records, Book 10,

LEBANON STREET

STREET

FLOWER STREET

FLOWER STREET

STREET

STREET

HOPE STREET

F. McLAUGHLIN

SUBDIVISION

WASHINGTON

99' 49.5'

99' 49.5'

FIGUEROA N27°55'E N27°55'E
4912 50.88'

