

ACQUISITION AND IMPROVEMENT DISTRICT NO 1  
 OF THE COUNTY OF LOS ANGELES  
 FOR  
 THE WIDENING, EXTENDING AND IMPROVEMENT OF, AND WORK UPON  
**PALM STREET**  
 PART ONE

MAP SHOWING PROPERTY TO BE ACQUIRED, AND THE DISTRICT TO BE BENEFITED, KNOWN AS THE "ASSESSMENT DISTRICT" IN ACCORDANCE WITH THE PROVISIONS OF THE "ACQUISITION AND IMPROVEMENT ACT OF 1925", APPROVED MAY 23<sup>rd</sup> 1925, COMMONLY KNOWN AS THE "MATTOUN ACT."

SCALE 1"=100'

OCTOBER, 1925.

J. E. ROCKHOLD COUNTY SURVEYOR  
 SUBMITTED APPROVED

*W. J. Jones*  
 CHIEF DEPUTY

APPROVED AS TO FORM  
 EDWARD T. BISHOP, COUNTY COUNSEL

**LEGEND**

LAND SOUGHT TO BE ACQUIRED COLORED RED.  
 DISTRICT BOUNDARY LINE SHOWN THIS .  
 ZONE DIVISIONS WITHIN DISTRICT SHOWN THIS .

**EXHIBIT "A"**

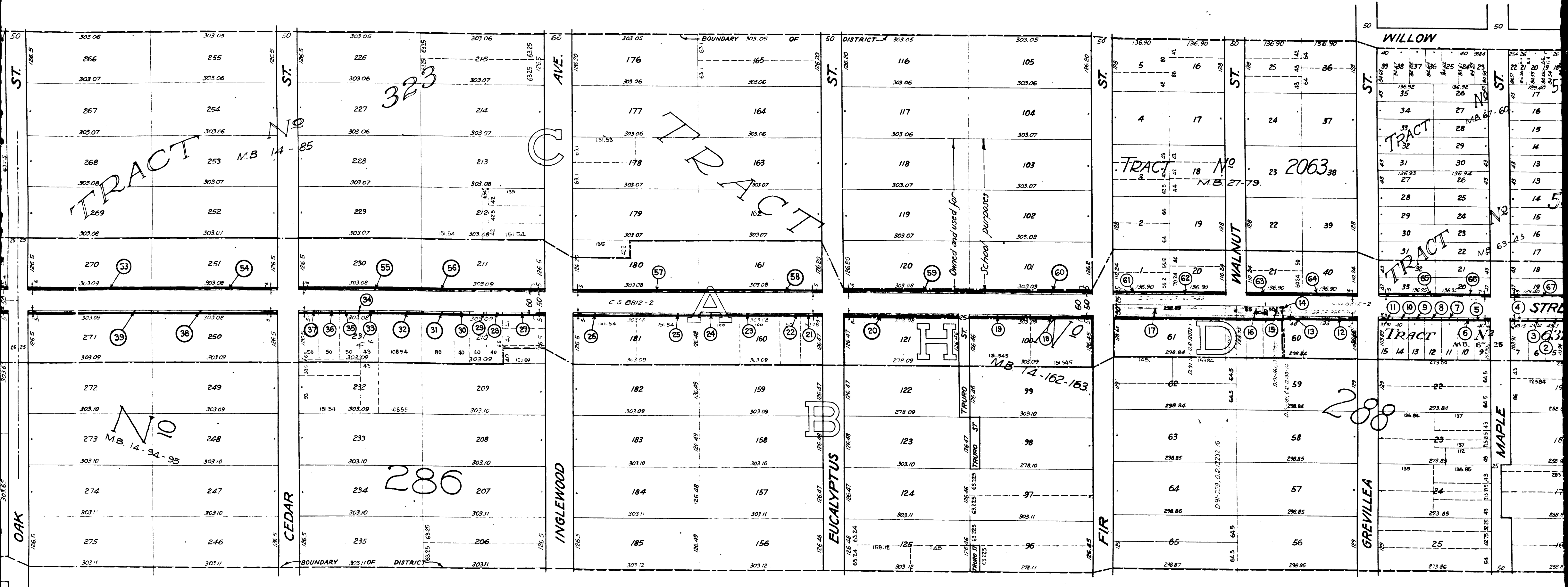
NUMBERS IN CIRCLES INDICATE PARCELS SOUGHT TO BE CONDEMNED; THE PARCELS ARE DESCRIBED IN PARAGRAPH VII OF THE COMPLAINT.  
 PORTION COLORED RED SHOWS LOCATION, GENERAL ROUTE AND TERMINI OF PUBLIC ROAD TO BE CONDEMNED.  
 SHEET 24

Superior Court Case No. 184188  
 Suit for Condemnation  
 Filed Nov. 24<sup>th</sup> 1925  
 County of Los Angeles, Plaintiff  
 Vs.  
 Mary Anderson, et al., Defendants.  
 Pending May 1, 1926.  
 Pending Apr. 1, 1927  
 Case dismissed Mar. 21<sup>st</sup> 1930.

C.F. 1315 -

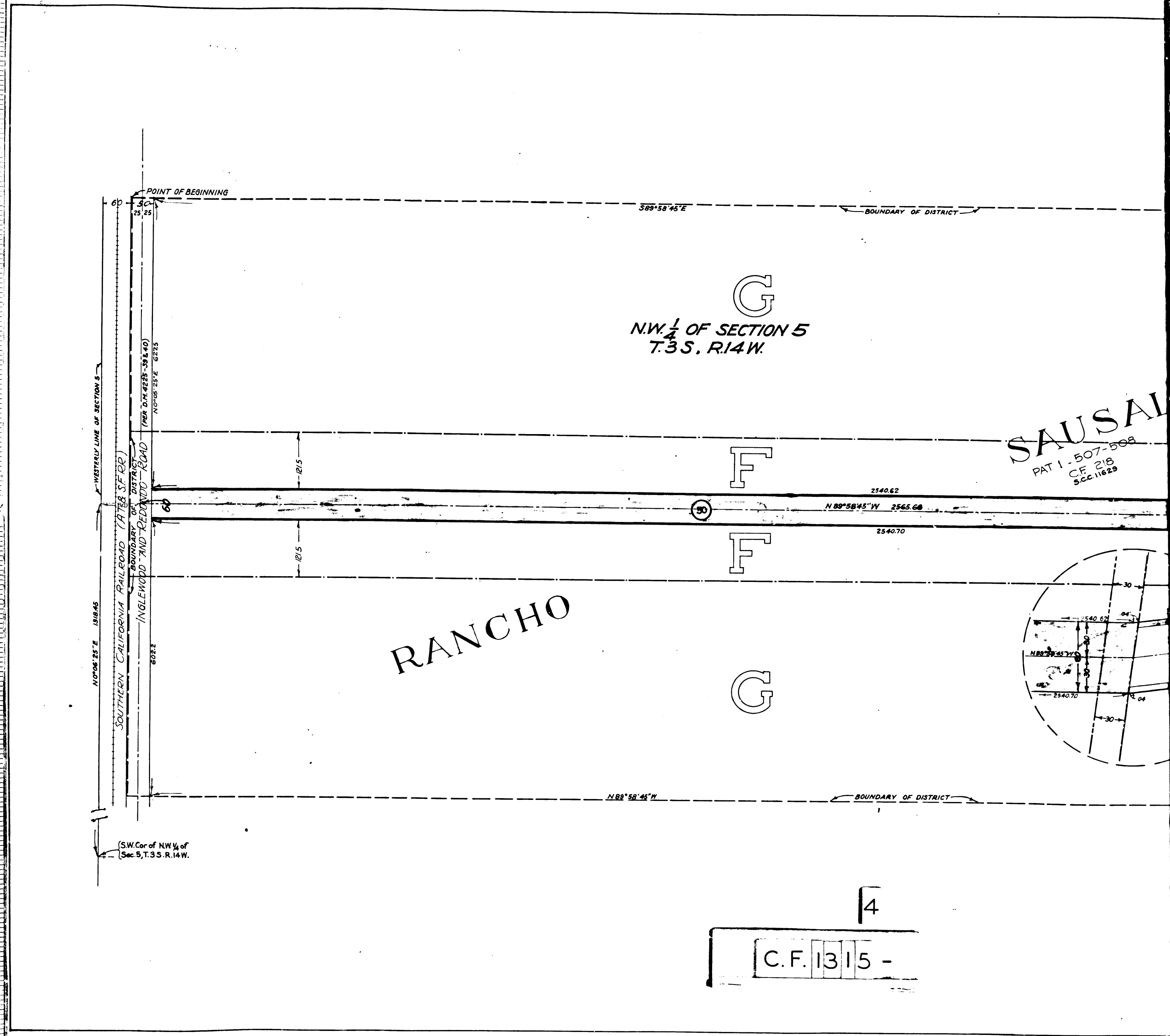
Palm St. changed to 102<sup>nd</sup> St. D-49-229

A. & I. DIST. NO 1	
Drawn by J. M. WELLS	Sept 1925
Indexed by J. M. WELLS	Sept 1925
Checked by R. B. HUEBNER	Oct 1925



2  
C.F. 1315 -





SAUSAL  
 PAT 1-507-508  
 C.F. 218  
 S.C. 11629

4  
 C.F. 1315 -