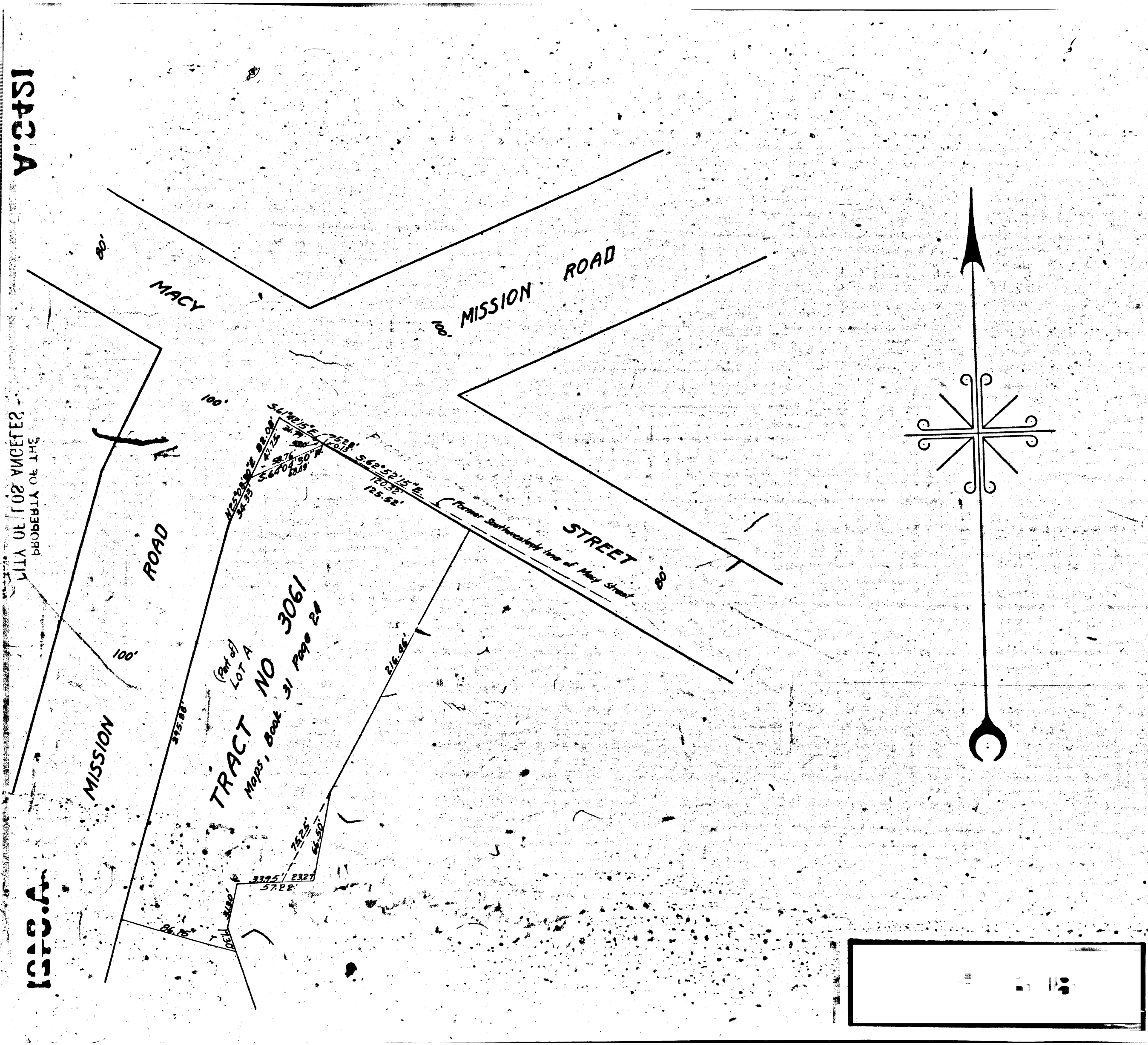


ISPC.A

PROPERTY OF THE CITY OF LOS ANGELES

ISPC.A



MAP
 SHOWING THE LAND TO BE CONDEMNED
 FOR THE WIDENING OF
 MISSION ROAD
 AT
 MACY STREET
 IN THE
 CITY OF LOS ANGELES, CALIF.
 IN ACCORDANCE WITH ORDINANCE NO. 48070 NEW SERIES.
 JOHN G. SHAW, CITY ENGINEER. NOVEMBER 1925.
 SCALE: 1 INCH = 50 FEET

NOTE: Land to be condemned shown colored red
 Dotted lines and dimensions show property
 holdings in those cases where they differ
 from recorded subdivisions.

Superior Court Case No. 184821
 Suit for Condemnation
 Filed Dec. 3rd 1925
 City of Los Angeles, Plaintiff
 Vs.
 Advance Body Works, et al. Def.

Pending May 1, 1926.
 Final judgment in favor of Plaintiff
 as per map, rendered Mar. 23, 1927
 Judg. Bk. 641-97

ISPC.A

CITY OF LOS ANGELES
PROPERTY OF THE

ISPC.A