

MAP
 (CONSISTING OF 4 SHEETS)
 SHOWING LAND TO BE CONDEMNED
 FOR THE
OPENING
 OF A NEW STREET TO BE KNOWN AS
VIRGIL AVENUE
 ALONG THE SOUTHERLY PROLONGATION OF
HILLHURST AVENUE
 BETWEEN
SUNSET BOULEVARD AND LEAVITT STREET
 THENCE IN A SOUTHEASTERLY DIRECTION
 BETWEEN
LEAVITT STREET AND FOUNTAIN AVENUE
 AT ITS INTERSECTION WITH VIRGIL AVENUE
 AND
THE WIDENING AND STRAIGHTENING OF
VIRGIL AVENUE
 BETWEEN
FOUNTAIN AVENUE AND GENEVA STREET
 IN THE
CITY OF LOS ANGELES, CALIFORNIA.

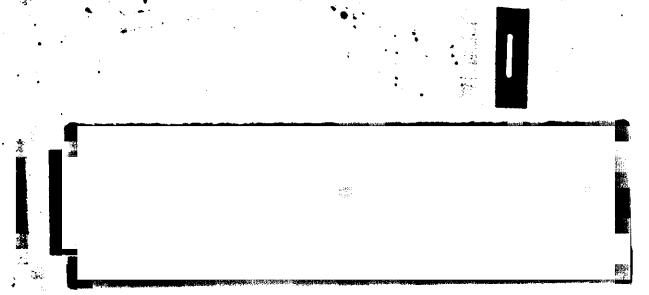
Superior Court Case No. 164762
 Suit for Condemnation
 Filed Dec. 1, 1925
 City of Los Angeles, Plaintiff
 Vs.
 Kenneth Kellogg, et al., Def.
 Pending No. 1
 Pending Apr. 1927
 Interlocutory judgment rendered Mar. 2, 1928 - Judg. Bk. 678-267
 Final judgment in favor of Plt'ff. as per map, rendered Aug. 9, 1929.

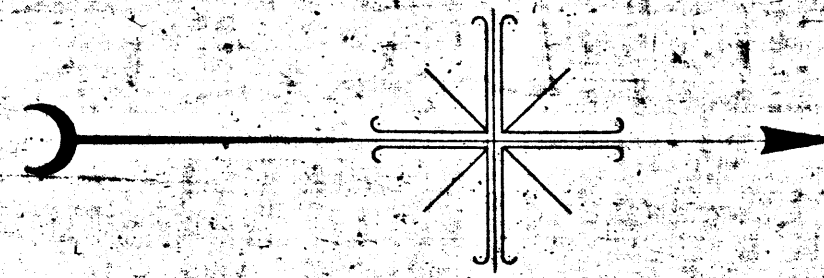
IN ACCORDANCE WITH ORDINANCES NOS. 51543 (NEW SERIES) AND 52552
 SCALE IN FEET:
 H. A. VAN NORMAN, CITY ENGINEER. AUGUST 1925.

*Note: Land to be condemned shown colored red.
 Broken lines and figures show property holdings in cases where they differ from recorded subdivisions.
 Figures in circles indicate the parcel numbers as set forth in Paragraph IX of the complaint*

D: 75-151, O.R. 9345-20.

Sheet 5
 Sht. 40



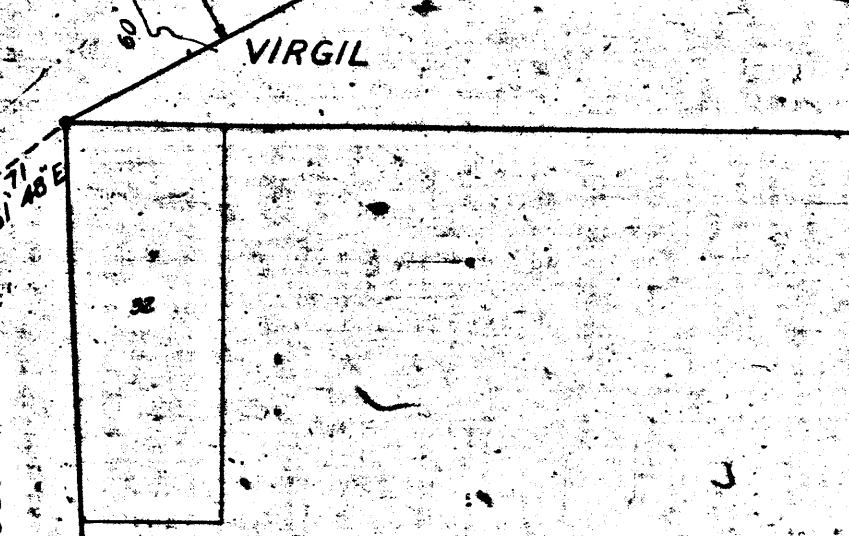
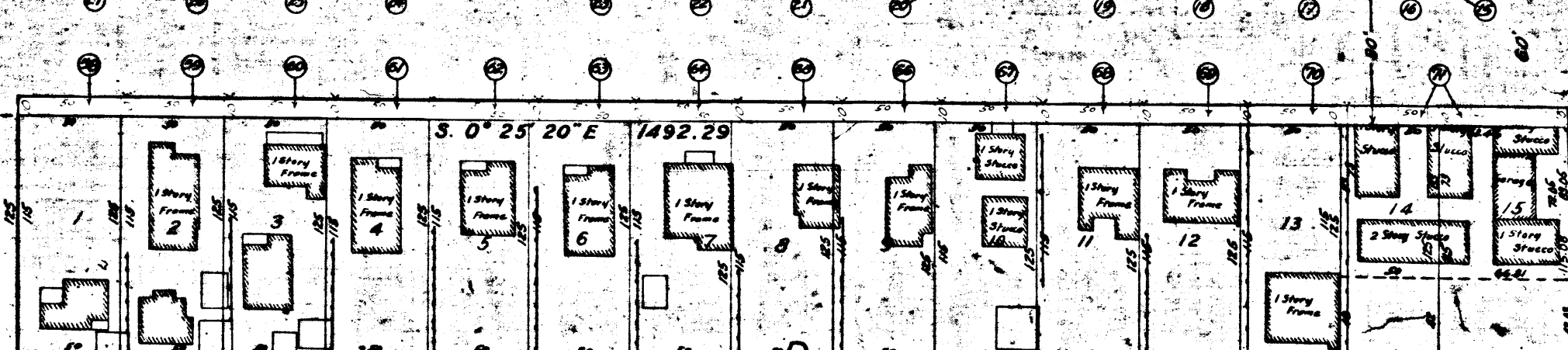
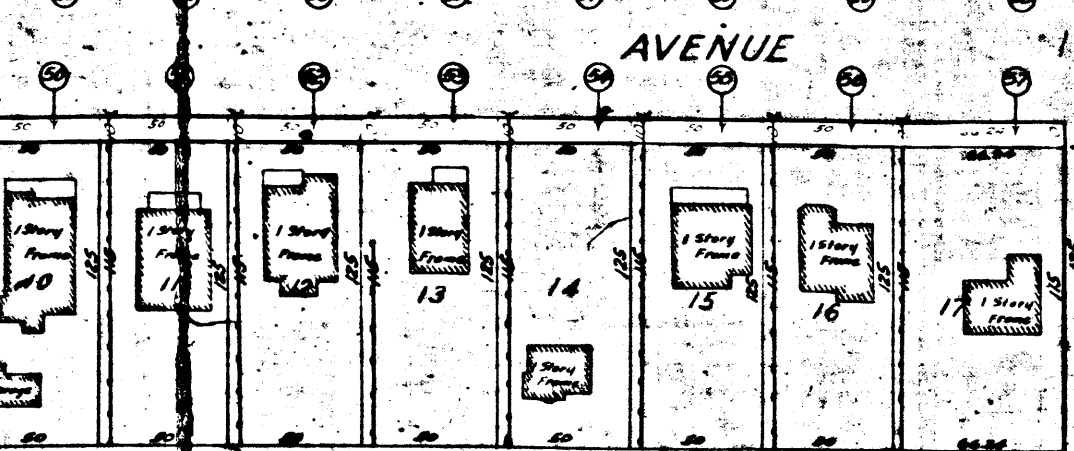
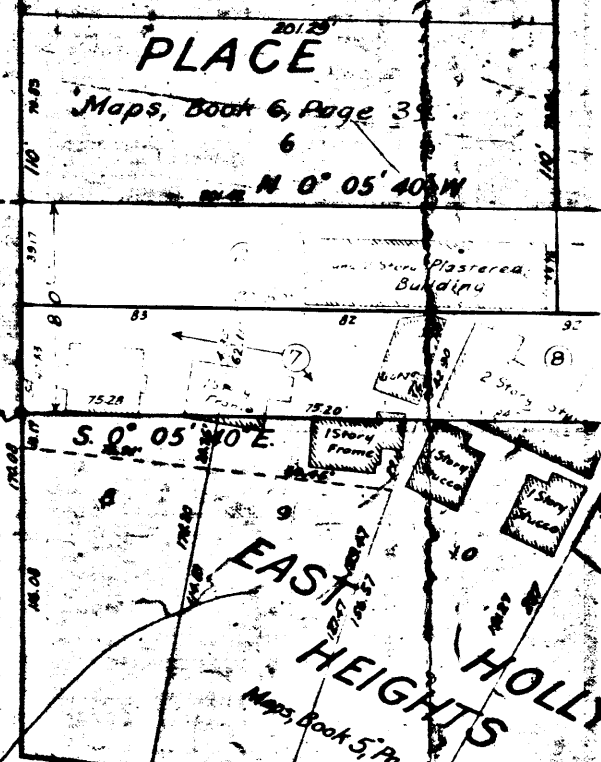
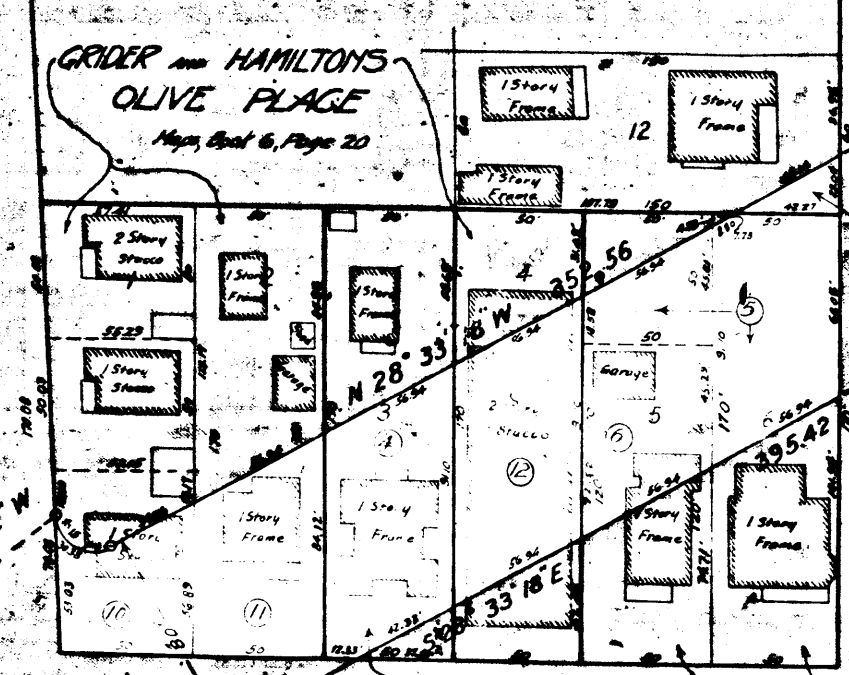
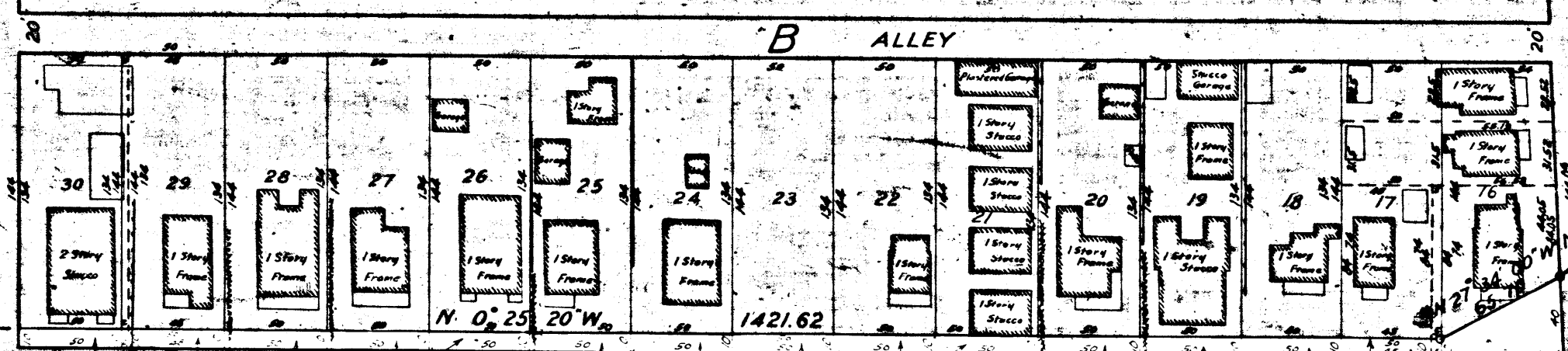
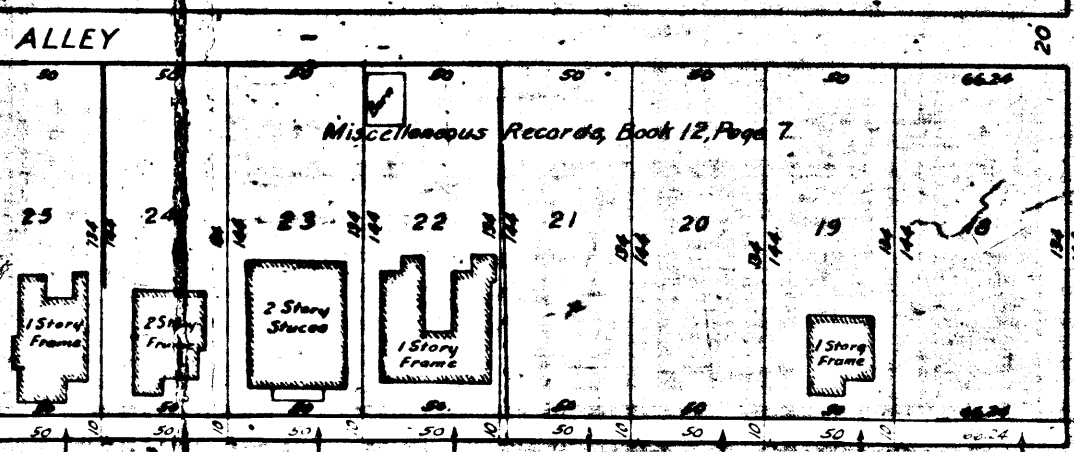


BOUNDARY

TRACT

THOREN

PLACE



873318

873318

0.4 W VIRGIL AVENUE
SHEET NO 1

CITY OF LOS ANGELES
BUREAU OF THE
MAYOR

FOR CONTINUATION SEE SHEET NO 2

BOULEVARD

SANTA MONICA

CITY BOUNDARY

A ALLEY

AVENUE

LEXINGTON

5 11' 15" 20" W - 536.36

VIRGIL

AVENUE

Miscellaneous Records, Book 12, Page 7

