

COUNTY STREET OPENING DISTRICT No 50  
 MAP OF  
 PROPOSED OPENING, WIDENING & EXTENDING  
 OF  
**PACIFIC AVENUE**  
 BETWEEN COVINA BLVD. & THE NORTH-  
 WESTERLY BOUNDARY OF CITY OF WEST COVINA  
 SHOWING

The exterior boundary of the district to be assessed therefor under the provisions of the County Street Opening Act of 1923, Approved May 11, 1923  
 Scale 1"=100' July, 1925  
**J.E. ROCKHOLD, COUNTY SURVEYOR**

Submitted: *Alfred Jones* Approved: *J.E. Rockhold*  
 Chief Deputy County Surveyor  
 Approved as to form  
**EDWARD T. BISHOP, COUNTY COUNSEL**  
 By *Walter A. McLeod*  
 Assistant

LEGEND:-  
 District Boundary Line \_\_\_\_\_  
 Land sought to be condemned colored red.

I hereby certify that the Board of Supervisors of Los Angeles County did on the 27<sup>th</sup> day of *July*, 1925 by resolution duly adopted, approve the accompanying map of the assessment district of County Street Opening District No 50 of the County of Los Angeles for the opening, widening & extending of Pacific Avenue.  
**L. ELAMPTON**  
 County Clerk and Ex-Officio Clerk of the Board of Supervisors of said County of Los Angeles.  
 Filed July 27, 1925 in the office of the County Surveyor of Los Angeles Co. **J.E. ROCKHOLD, County Surveyor**  
 by *Alfred Jones* Deputy  
 by *Walter A. McLeod* Deputy

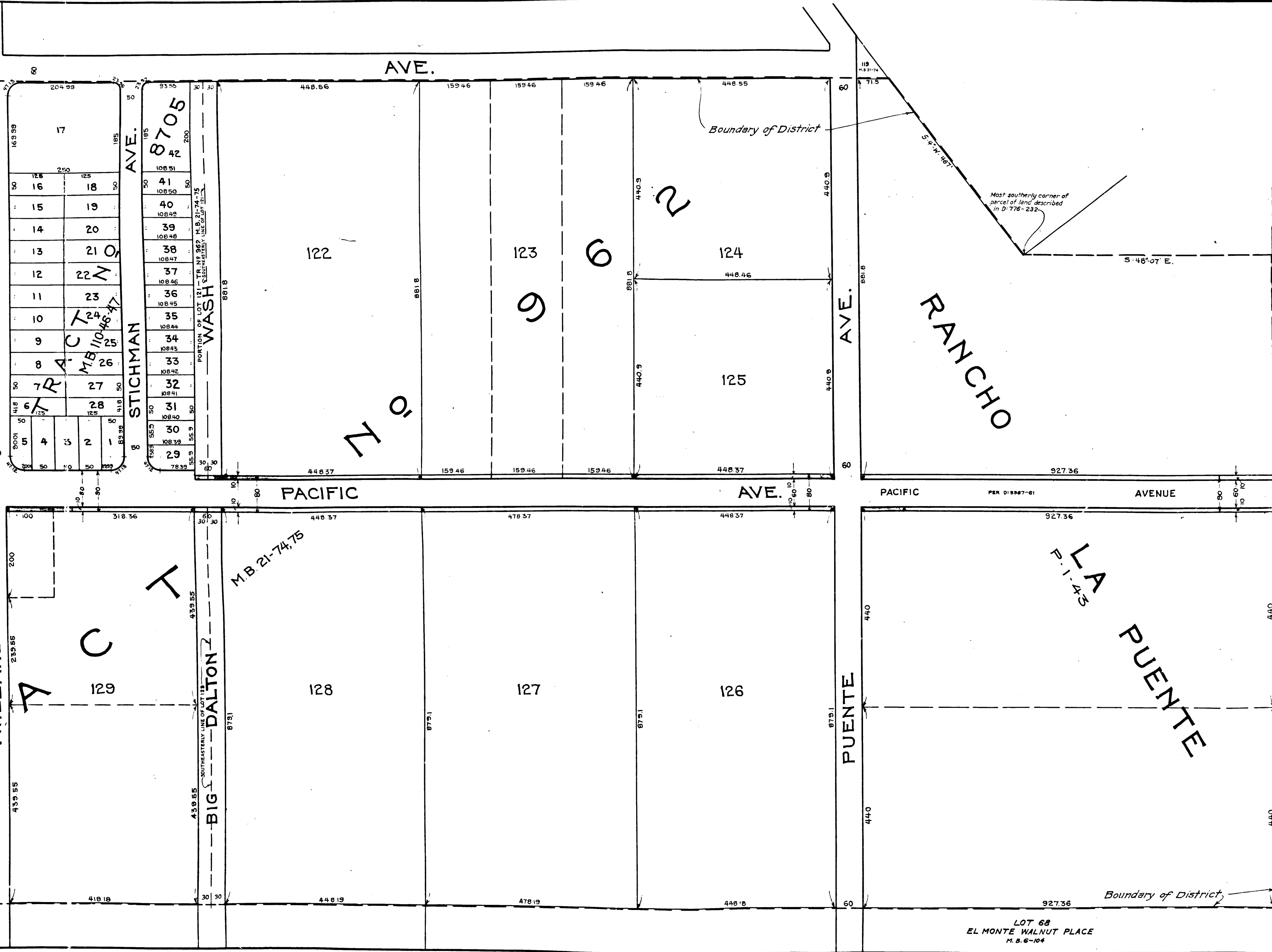
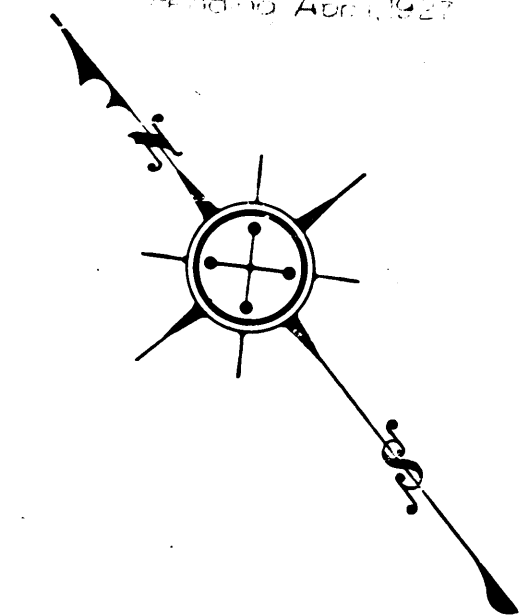
Superior Court Case No 186472  
 Suit for Condemnation  
 Filed Dec. 28<sup>th</sup> 1925  
 County of Los Angeles, Plffs  
 Vs.  
 Jeremiah Ahern, et al, Def  
 Pending Mar. 1, 1928.  
 Filed 10th April 1927

Interlocutory decree rendered July 20, 1927  
 Judg. Bk 845-250  
 Final judgment in favor of Plffs. as per map recorded May 9<sup>th</sup> 1928  
 D.C. 131, O.R. 7830-27  
 544-25

Per Pacific Ave changed to Ho. Ave. 12-24-18  
 " " " " " " " " 1-24-19

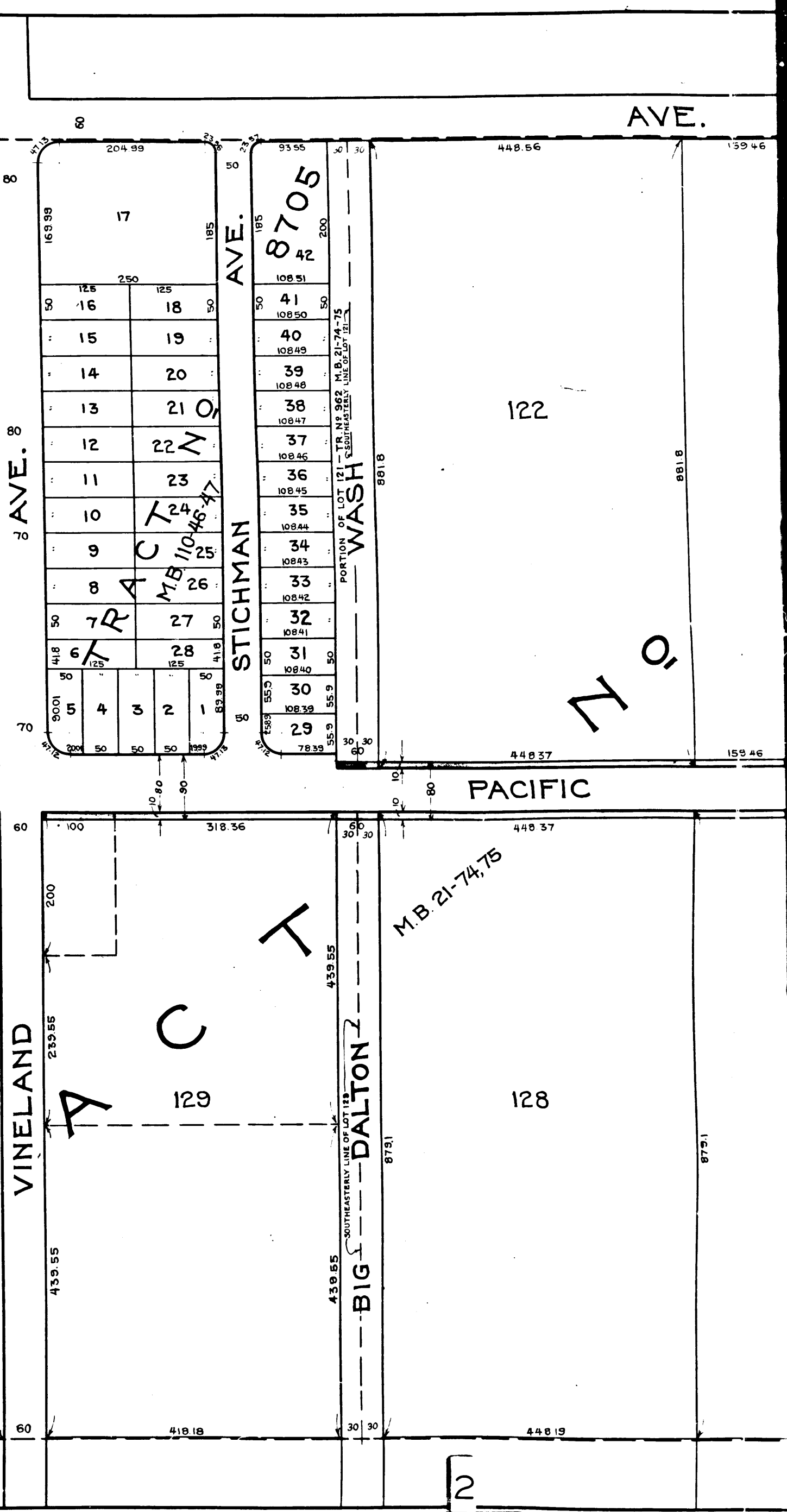
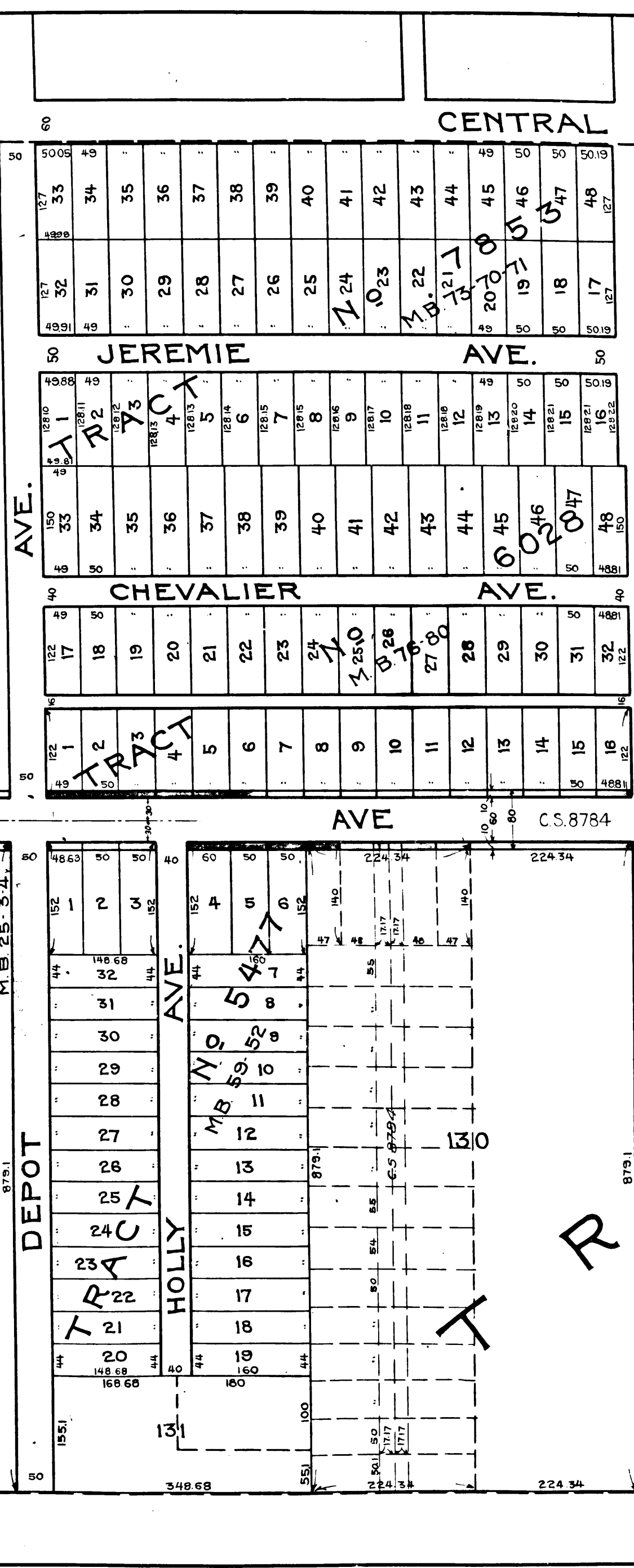
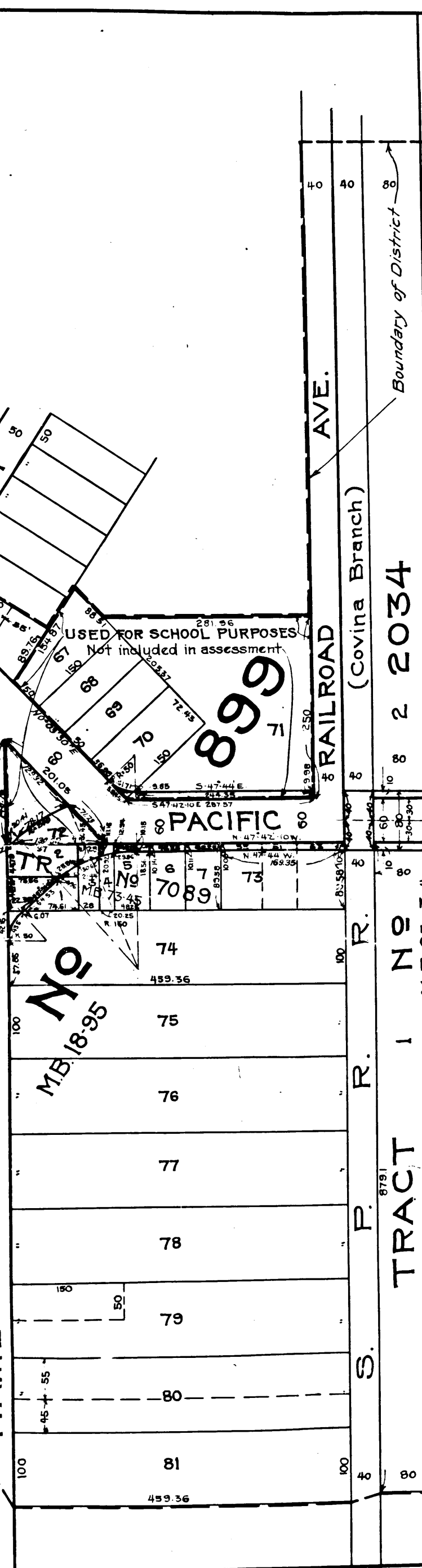
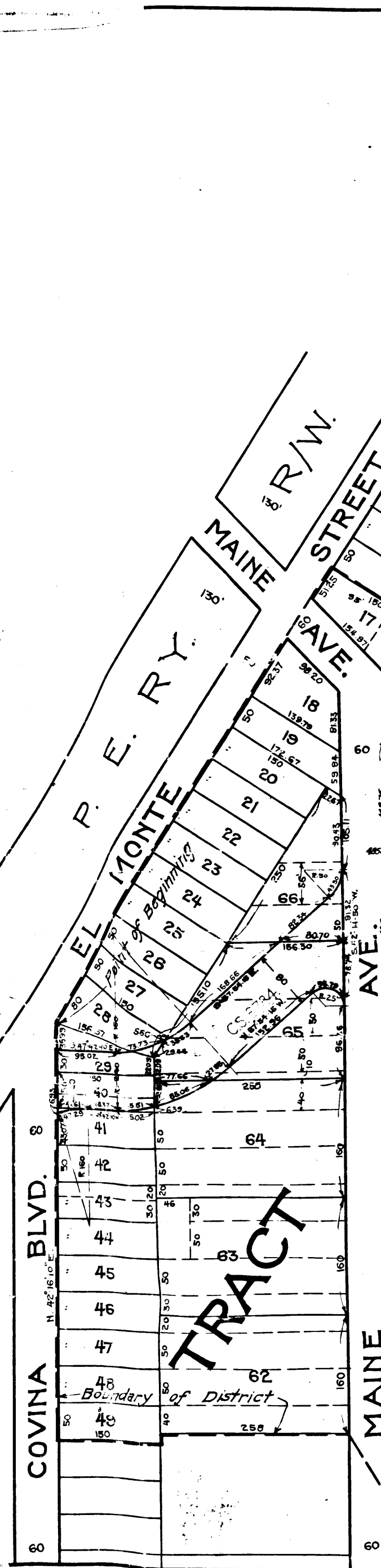
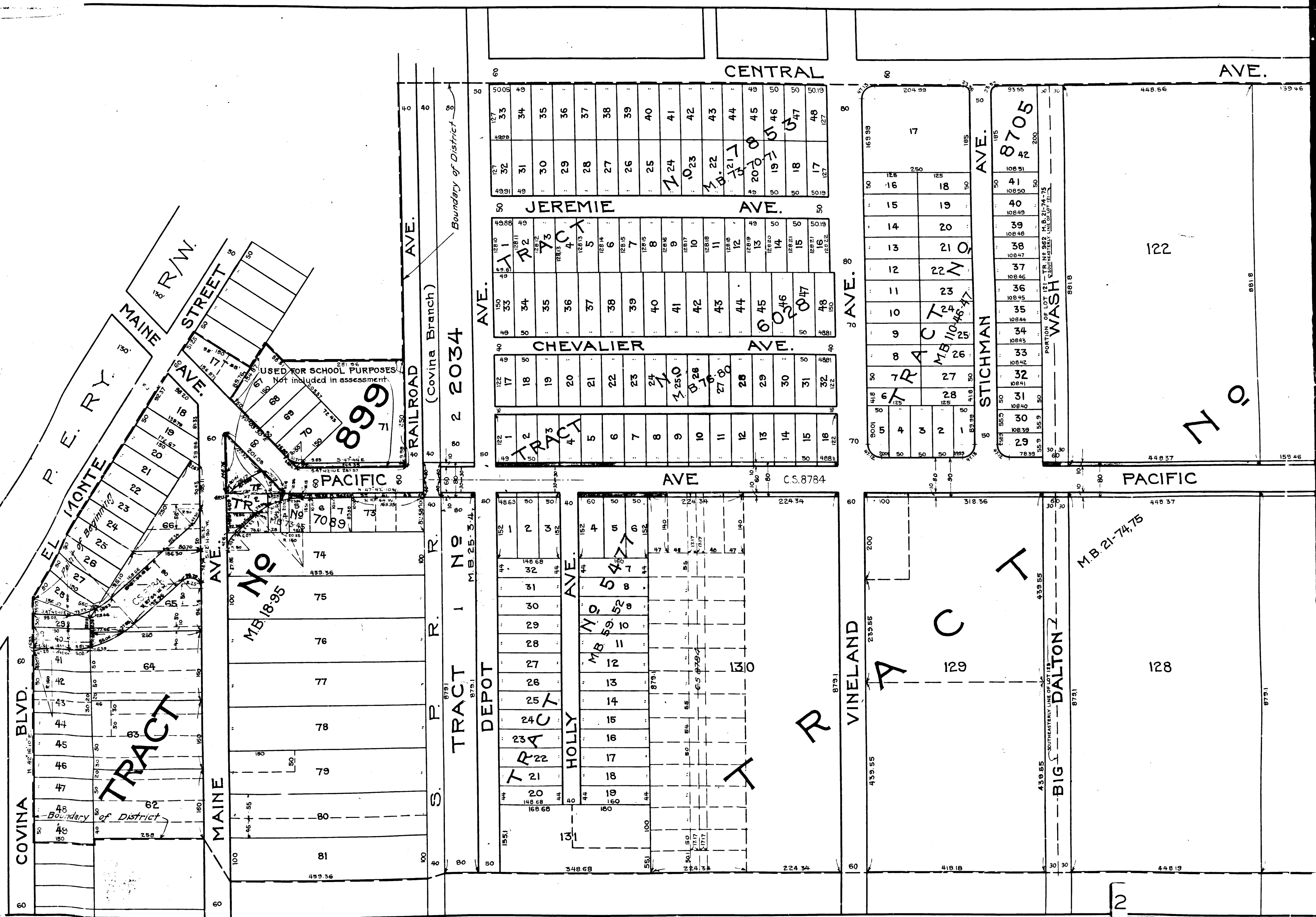
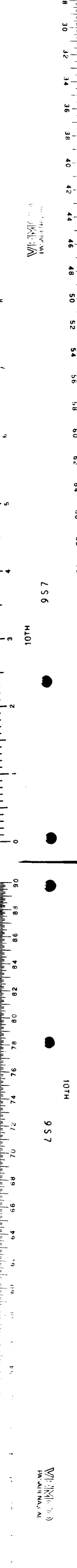
S.O.D. No 50  
 Drawn by *E. Van Wert* May 25  
 Traced by *E. Van Wert* May 25  
 Checked by *R.B. Heuer* July 25

C.F. 1322 -



LOT 68  
 EL MONTE WALNUT PLACE  
 M. S. 6-104

Vertical scale on the right edge of the map, ranging from 0 to 100.



C.F. 1322-