

COUNTY
STREET OPENING DISTRICT No 63
MAP OF
PROPOSED OPENING AND EXTENDING
OF
CENTER AVENUE
BETWEEN
INGLEWOOD AVE. & CEDAR STREET
AND THE
PROPOSED OPENING
OF
HICKORY STREET
BETWEEN LENNOX AVENUE AND
PROPOSED CENTER AVENUE

SHOWING
The exterior boundary of the District to be assessed therefor under
the provisions of the County Street Opening Act of 1923 Approved May 11, 1923.
Scale 1"=100'
J. E. ROCKHOLD, County Surveyor
Submitted, *Edward T. Bishop* Approved *J. E. Rockhold*
Chief Deputy County Surveyor
Approved as to form
EDWARD T. BISHOP, County Counsel
By *Edward T. Bishop*
Assistant

LEGEND:
District Boundary Line ————
Land sought to be condemned colored red.

I hereby certify that the Board of Supervisors of Los Angeles
County did on the 27th day of July, 1925, by resolution duly
adopted, approve the accompanying map of the assessment
district of County Street Opening District No 63 of the County
of Los Angeles for the opening and extending of Center Avenue
and the opening of Hickory Street.

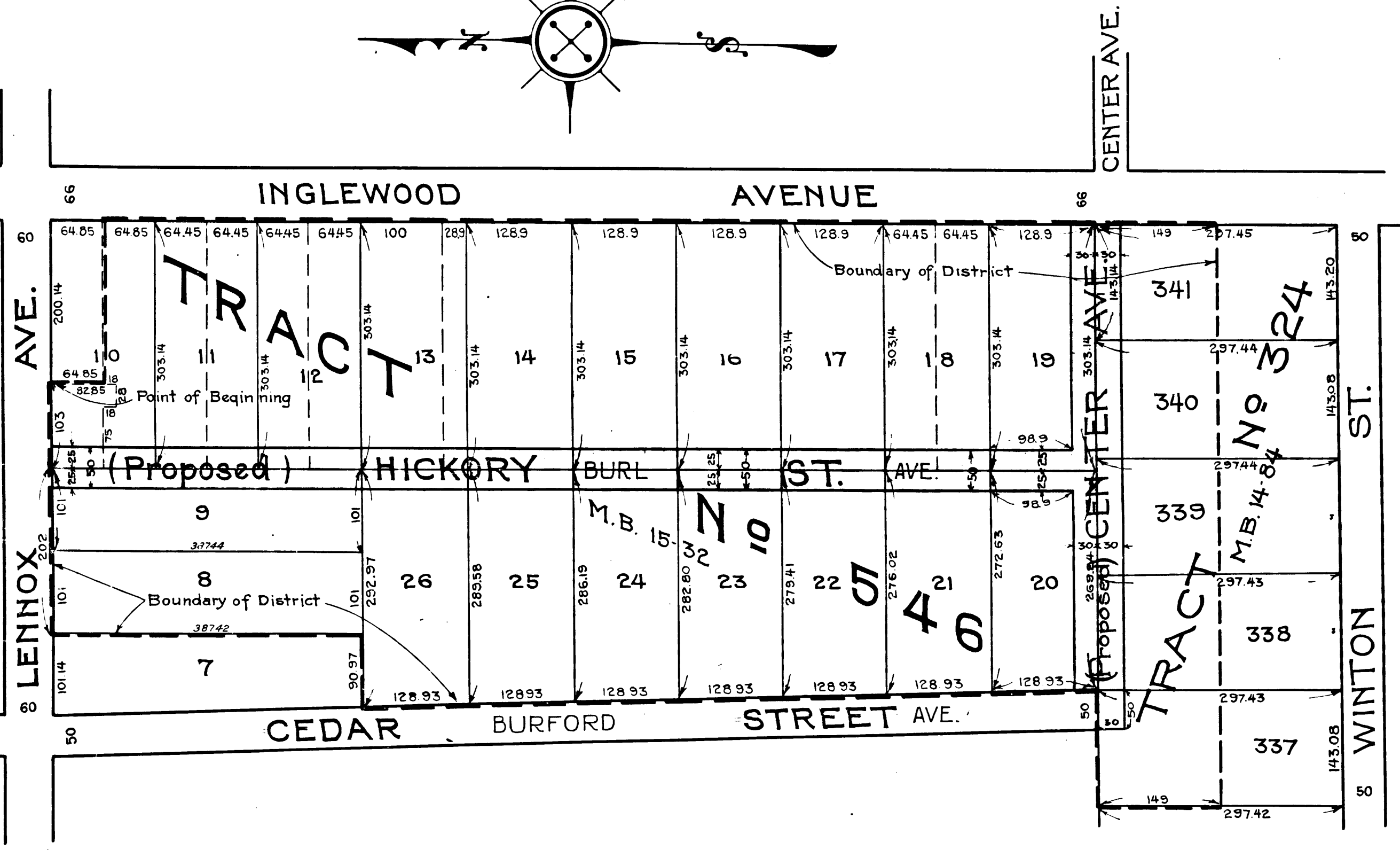
Filed July 27th 1925 in the office of
the County Surveyor of Los Angeles Co
J. E. ROCKHOLD, County Surveyor
by *Robert H. Newer*
Deputy
County Clerk and Ex-Officio Clerk
of the Board of Supervisors of
Said County of Los Angeles
by *William A. Beatty*
Deputy

Superior Court Case No. 18330
Suit for Condemnation
Filed Nov. 15th 1925
County of Los Angeles, Plaintiff
vs.
Remond M. ...
London, Ariz. ...

S.O.D. No 63	
Drawn by E. Van Wert	July 25
Traced by E. Van Wert	July 25
Checked R. H. Newer	July 25

interlocutory decree rendered May
16th 1927 - City of Los Angeles vs. ...
Final judgment in favor of Plaintiff as per -
map rendered May 7, 1928
D. O. T. 158, 7, R. 1853-265

C.F. 1326 -



Center Ave changed to 145 on District

VERMICO

VERMICO