

**COUNTY**  
**STREET OPENING DISTRICT N<sup>o</sup> 35**  
**MAP OF**  
**PROPOSED WIDENING**  
**OF**  
**REDONDO & WILMINGTON BLVD.**  
**BETWEEN HILLWORTH AVE. AND REED ST.**  
**AND OF**  
**WILMINGTON ROAD**

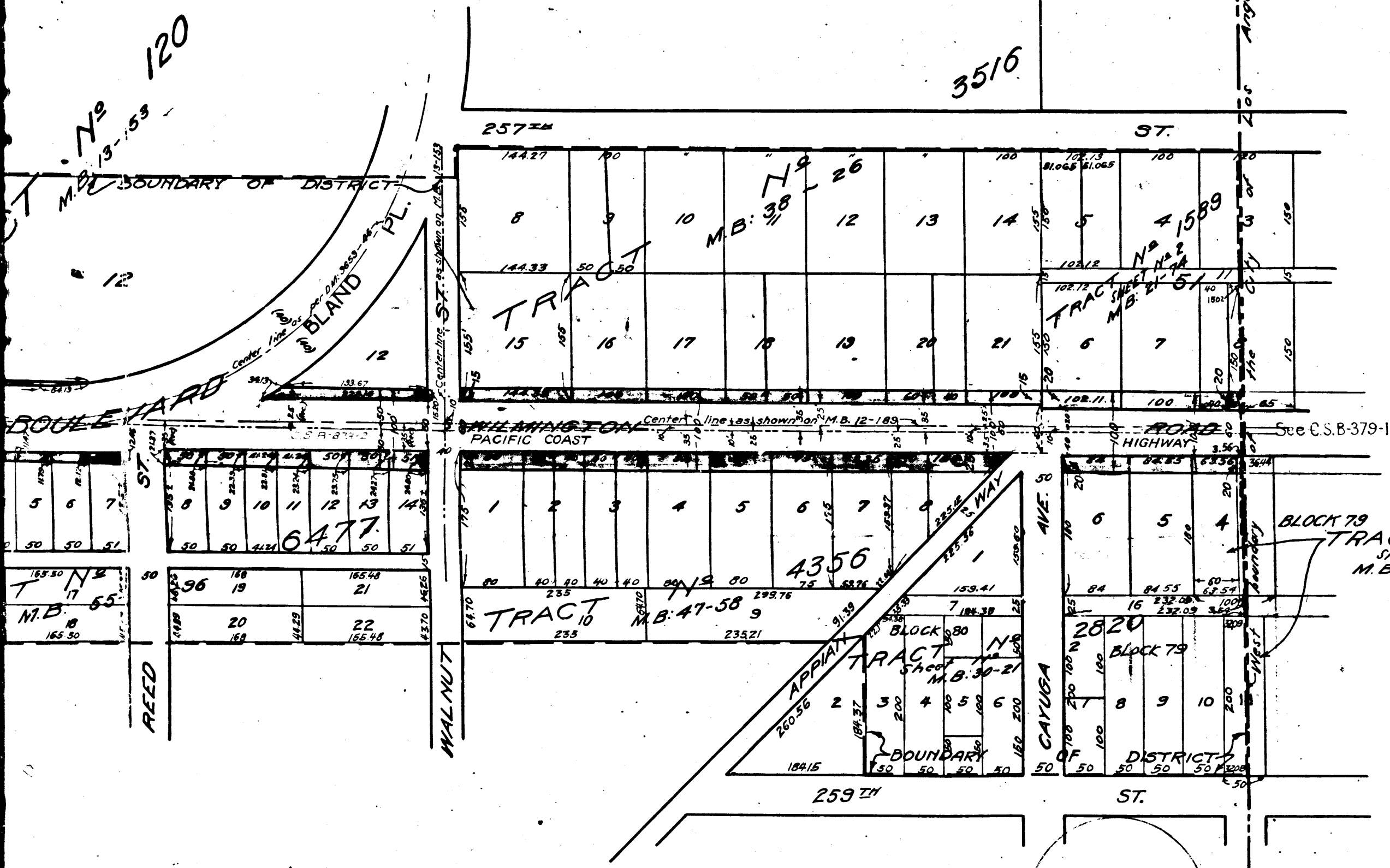
FROM ITS WESTERLY TERMINUS AT REED ST. AND REDONDO AND WILMINGTON BLVD. TO THE WESTERLY BOUNDARY OF LOS ANGELES CITY.  
 SHOWING  
 The exterior boundary of the District to be assessed therefor under the provisions of the County Street Opening Act of 1923, Approved May 11, 1923.  
 SCALE 1" = 100'  
 January 1925

Submitted J.E. ROCKHOLD-COUNTY SURVEYOR  
Alfred Jones Chief Deputy  
 Approved J.E. Rockhold County Surveyor

Approved as to form  
Edward T. Bishop-County Counsel  
 by Exp. W. Madant Chief Deputy

**LEGEND**  
 District Boundary Line - - - - -  
 Land sought to be condemned colored red.

I hereby certify that the Board of Supervisors of Los Angeles County did, on the 16<sup>th</sup> day of January, 1925, by resolution duly adopted, approve the accompanying map of the assessment district of County Street Opening District N<sup>o</sup> 35 of the County of Los Angeles for the widening of Redondo and Wilmington Boulevard and of Wilmington Road.  
 Filed March 16, 1925, in the office of the County Surveyor of Los Angeles County.  
J.E. ROCKHOLD-COUNTY SURVEYOR  
 by M.F. [Signature] Deputy  
L.E. LAMPTON, COUNTY CLERK & EX-OFFICIO CLERK OF THE BOARD OF SUPERVISORS OF SAID COUNTY OF LOS ANGELES  
 by Mame Stearty Deputy.

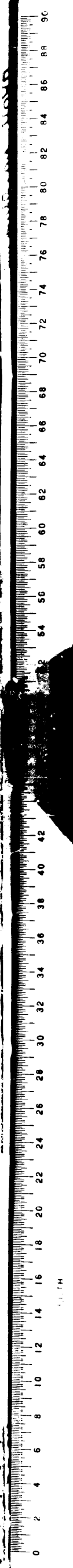


Final judgment in favor of Pltff as per map rendered April 25<sup>th</sup> 1926  
 0 67 78 OR 7857-291  
 Skt. 27  
 " 23  
 4.35  
 4.74

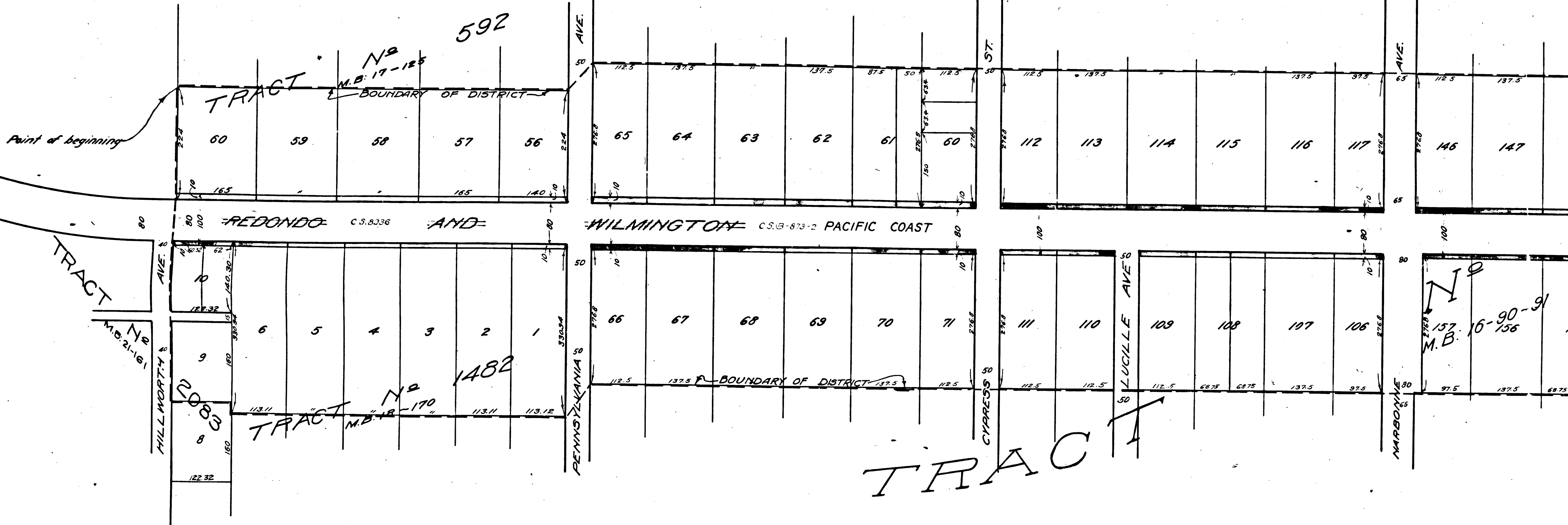
Superior Court Case No. 175840  
 Suit for Condemnation  
 Filed Aug. 5<sup>th</sup> 1925  
 County of Los Angeles, Pltff  
 vs.  
 Andrew J. Autry et al., Def.  
 Pending May 1, 1926.  
 Interlocutory judgment as per map, rendered Feb. 3<sup>rd</sup> 1927  
 Judg. Blk. 635-79  
 Pending Apr. 7<sup>th</sup> 1927

C.F. 1330-

O. & W. N <sup>o</sup> 35	
DRAWN BY HASTELL	JAN. 1925
TRACED BY HASTELL	JAN. 1925
CHECKED BY HEUER	JAN. 1925







TRACT

3

C.F. 1330-