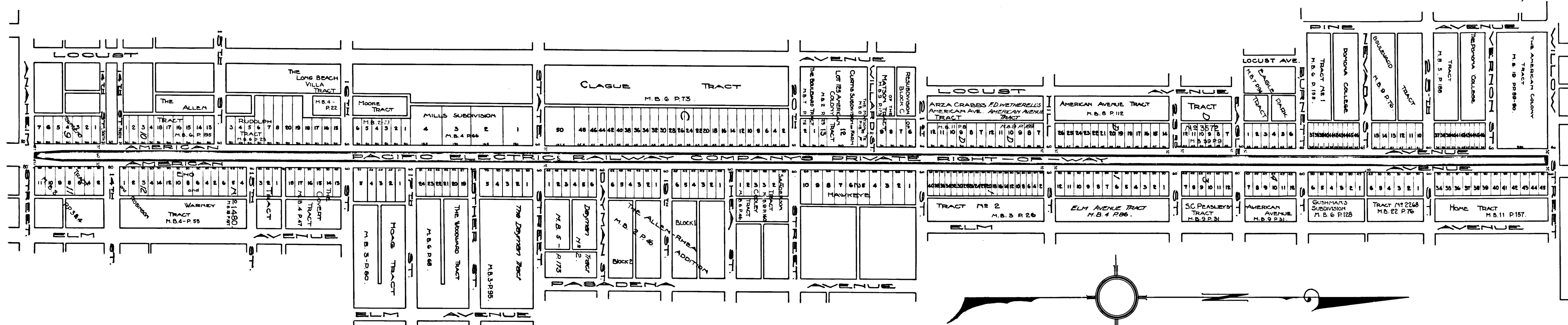


Land to be taken outlined in red



SCALE: 1"=200'

Superior Court Case No. L B C -25
 Suit for Condemnation
 Filed Jan. 29th 1926
 City of Long Beach, Plaintiff
 vs.
 P. E. Hatch et al, Defendants.
 Pending May 1, 1926
 Case dismissed March 1st 1927.

C.F. 1336 -