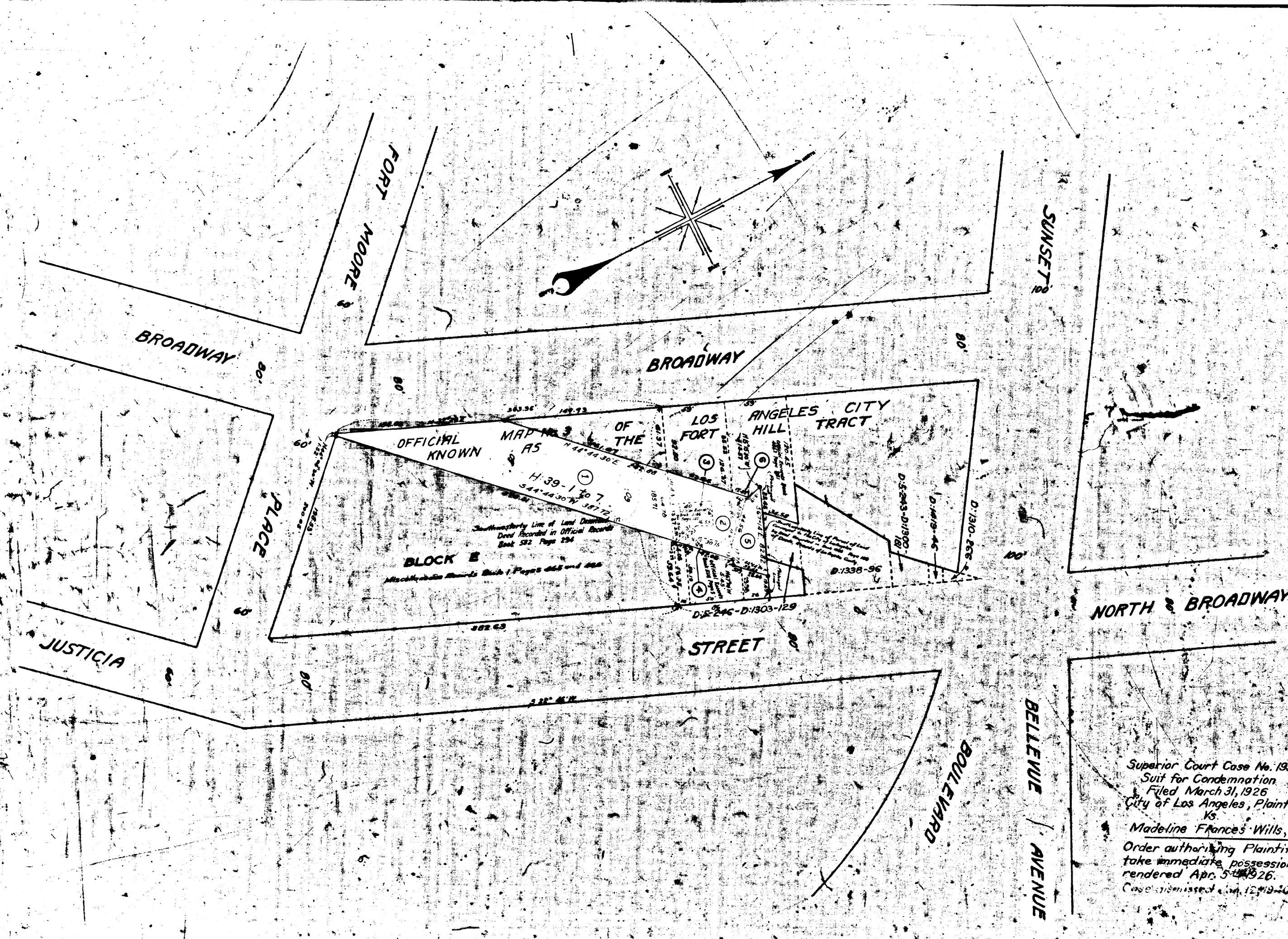


AS48.A



MAP SHOWING
 LAND TO BE CONDEMNED FOR
 PUBLIC STREET PURPOSES
 BETWEEN
 NORTH BROADWAY AT JUSTICIA STREET
 AND
 FORT MOORE PLACE AT BROADWAY

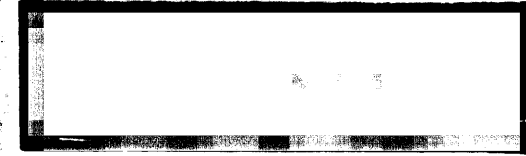
IN THE CITY OF LOS ANGELES, CALIFORNIA
 In Accordance with Ordinance No. 54088 and 54089
 JOHN C. SHAW CITY ENGINEER FEBRUARY 1926
 SCALE: 1" = 25 FEET

Note: Land to be condemned shown colored red.
 Dotted lines and dimensions show property holdings in
 those cases where they differ from recorded subdivisions.
 Sheet 2

A.3425

Superior Court Case No. 193023
 Suit for Condemnation
 Filed March 31, 1926
 City of Los Angeles, Plaintiff
 Vs.
 Madeline Frances Wills, Def.
 Order authorizing Plaintiff to
 take immediate possession
 rendered Apr. 5, 1926.
 Case dismissed Jan. 12, 1930.

Superior Court Case No. 190816
 Suit for Condemnation
 Filed Feb. 27, 1926
 City of Los Angeles, Plaintiff
 Vs.
 Madeline Frances Wills, Def.
 Pending May 1, 1927
 Pending April, 1927



AS48.A