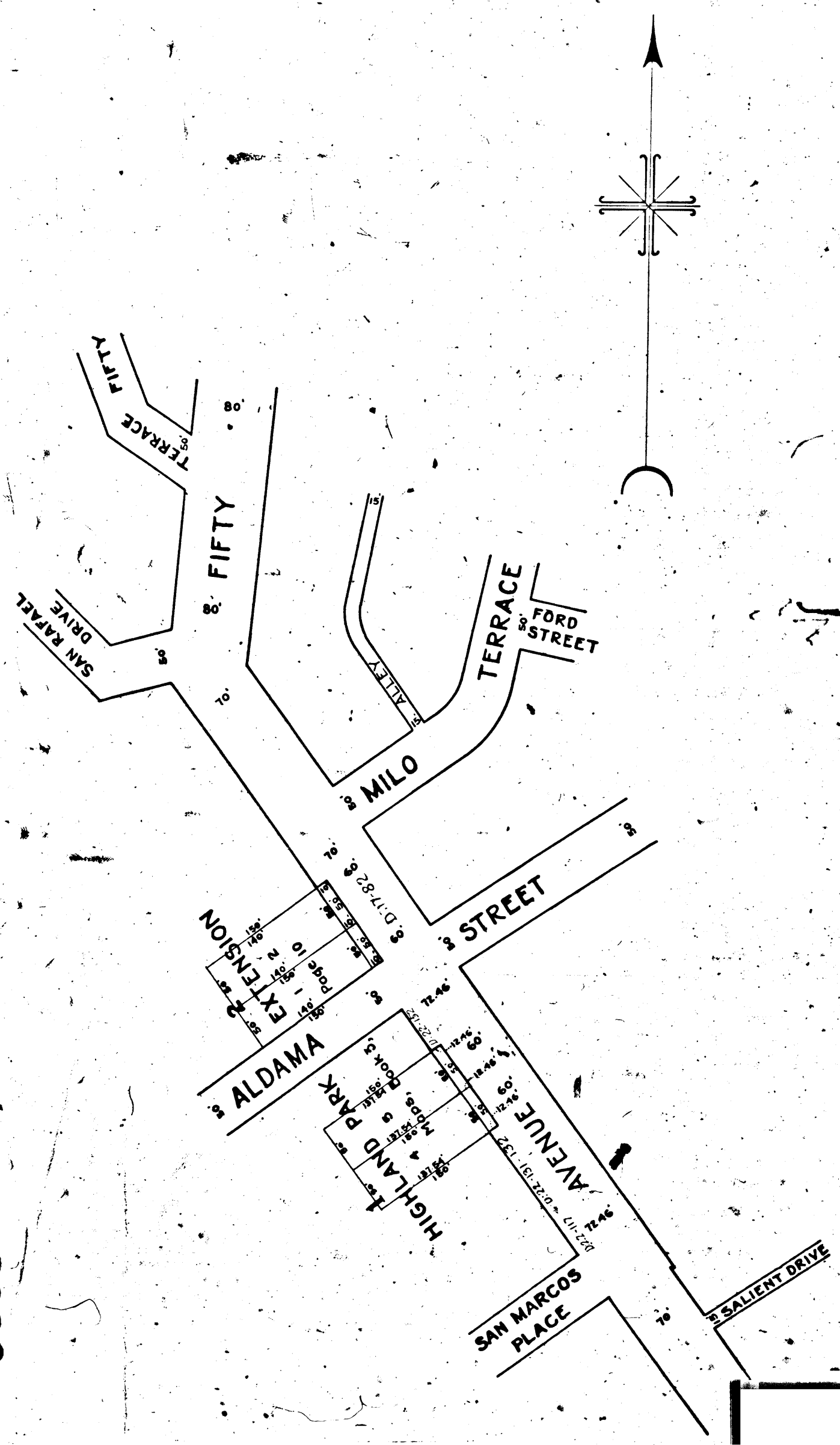


00320.A

A.3200

CITY OF LOS ANGELES
OFFICE OF THE ENGINEER



MAP
 SHOWING THE LAND TO BE CONDEMNED
 FOR THE
 WIDENING
 OF
AVENUE FIFTY
 BETWEEN
SAN RAFAEL DRIVE
 AND
SAN MARCOS PLACE
 IN THE
 CITY OF LOS ANGELES, CALIFORNIA
 IN ACCORDANCE WITH ORDINANCES NOS. 52671 AND 53251
 JOHN C. SHAW, CITY ENGINEER DECEMBER 1925

SCALE: 1 INCH = 100 FEET

NOTE: Land to be condemned shown colored red

*Superior Court Case No. 192870
 Suit for Condemnation
 Filed March 29th 1926
 City of Los Angeles, Plaintiff
 Vs.
 Carl A. Plath et al., Def.*

*Pending Apr. 1, 1927
 Interlocutory decree rendered May 7, 1927
 Judg. Bk. 640-376
 Final judgment in favor of Pl+ff. as
 per map, rendered June 5, 1928.*

D: 65-241, O.R. 7191-107

00320.A

A.3200