

COUNTY
STREET OPENING DISTRICT No 73
MAP OF
PROPOSED OPENING and EXTENDING
OF

NEW YORK AVENUE
BETWEEN LAKE AVENUE AND EL MOLINO AVENUE
SHOWING

The exterior boundary of the district to be assessed therefor under the provisions of the County Street Opening Act of 1923, Approved May 11, 1923

Scale: 1"=100' February, 1926

J.E. ROCKHOLD, COUNTY SURVEYOR.

Submitted: *Alfred Jones* Chief Deputy. Approved: *J.E. Rockhold* County Surveyor.

Approved as to form
EDWARD J. BISHOP, COUNTY COUNSEL
By: *Edward J. Bishop* Chief Deputy

LEGEND:-

District Boundary Line Land sought to be condemned colored red.

I hereby certify that the Board of Supervisors of Los Angeles County did, on the 23rd day of Feb. 1926, by resolution duly adopted, approve the accompanying map of the assessment district of County Street Opening District No 73 of the County of Los Angeles for the opening and extending of NEW YORK AVENUE.

Filed Feb. 23rd 1926, in the office of the County Surveyor of Los Angeles County.
J.E. ROCKHOLD, COUNTY SURVEYOR
By: *W.C. Carbee* Deputy

L.E. LAMPTON, COUNTY CLERK and Ex-Officio Clerk of the Board of Supervisors of said County of Los Angeles
By: *William B. Deacy* Deputy

Superior Court Case No. 194978
Suit for Condemnation
Filed April 28th 1926
County of Los Angeles, Plaintiff
vs.
W.C. Carbee et al., Defendants.

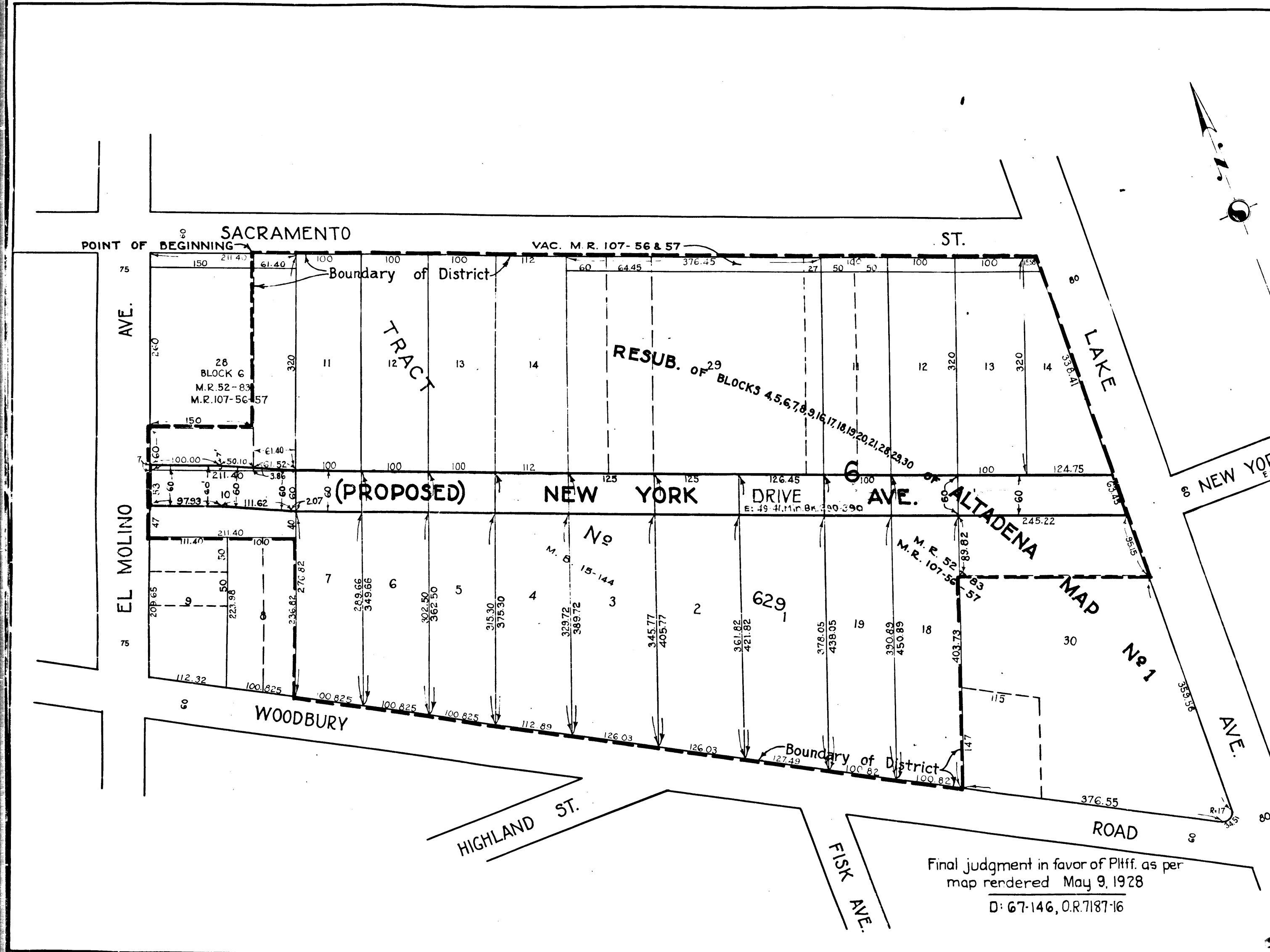
Pending Apr. 1, 1927
interlocutory decree rendered Aug. 23, 1927
Judg. Bk 642-377

INDEX 88

S.O.D. No 73	
Drawn by: F.S. Dodds	Feb. '26
Traced by: F.S. Dodds	Feb. '26
Checked by: R.B. Heuer	Feb '26

C.F. 1359-

Final judgment in favor of Pltff. as per map rendered May 9, 1928
D: 67-146, O.R. 7187-16



VENICO PASADENA, CAL.

VENICO PASADENA, CAL.

957

957