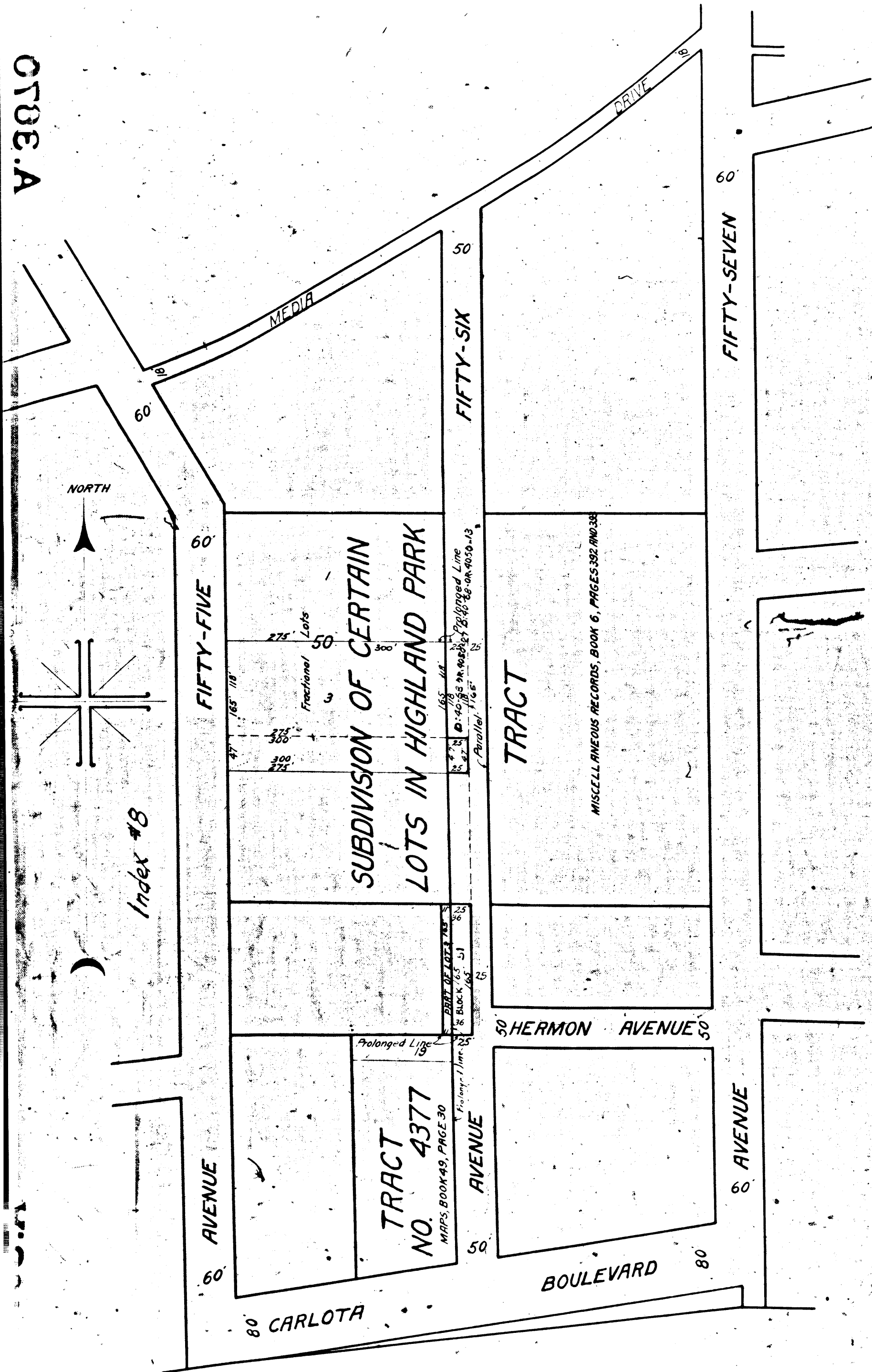


0708.A



Superior Court Case No. 195999
 Suit for Condemnation
 Filed May 11th 1926
 City of Los Angeles, Plaintiff
 Vs.
 Jane Brennen et al., Def.

Interlocutory judgment in favor
 of Plaintiff as per map, rendered
 Dec. 3rd 1926
 Judg. Bk. 630-272
 Pending Apr. 6th 1927
 Final judgment in favor of Pltff. as
 per map, rendered November 21, 1927.

D:61-263, O.R. 7716-217.

MAP

SHOWING THE LAND TO BE CONDEMNED FOR THE
 WIDENING

OF
 AVENUE FIFTY-SIX
 BETWEEN
 MEDIA DRIVE
 AND

CARLOTA BOULEVARD
 IN THE CITY OF LOS ANGELES, CAL.
 IN ACCORDANCE WITH ORDINANCES
 NOS. 53169 AND 53919
 JOHN C. SHAW CITY ENGINEER MARCH 1926
 SCALE 1"=100'

NOTE - LAND TO BE CONDEMNED SHOWN COLORED RED
 DOTTED LINES AND DIMENSIONS SHOW HOLDINGS
 IN CASES WHERE THEY DIFFER FROM RECORDED
 SUBDIVISIONS.

Index #8

A. 3670

Avenue Fifty-Six name estab. - Ord. 66,715.

0708.A

0708.A