

PLAN No 533.

I, B.J. Firmin, City Clerk do hereby certify that the within Map of the District to be Assessed for the widening of Cañon Drive between Wilshire Boulevard and Clifton Way in the City of Beverly Hills, Los Angeles County, California being Map No 533 was approved and adopted by the Board of Trustees of the City of Beverly Hills at a regular meeting thereof the 13<sup>th</sup> day of February, 1926.  
*B.J. Firmin*  
City Clerk.

Superior Court Case No. 198620  
Suit for Condemnation  
Filed June 14<sup>th</sup> 1926  
City of Beverly Hills, Plaintiff  
vs  
Milton L. Maack et al. Def.  
interlocutory judgment as per map,  
rendered Mar. 5<sup>th</sup> 1927  
Pending Apr. 6<sup>th</sup> 1927  
Final judgment in favor of Plaintiff  
as per map, rendered Nov. 8, 1927  
Judg. Ok. 676-187

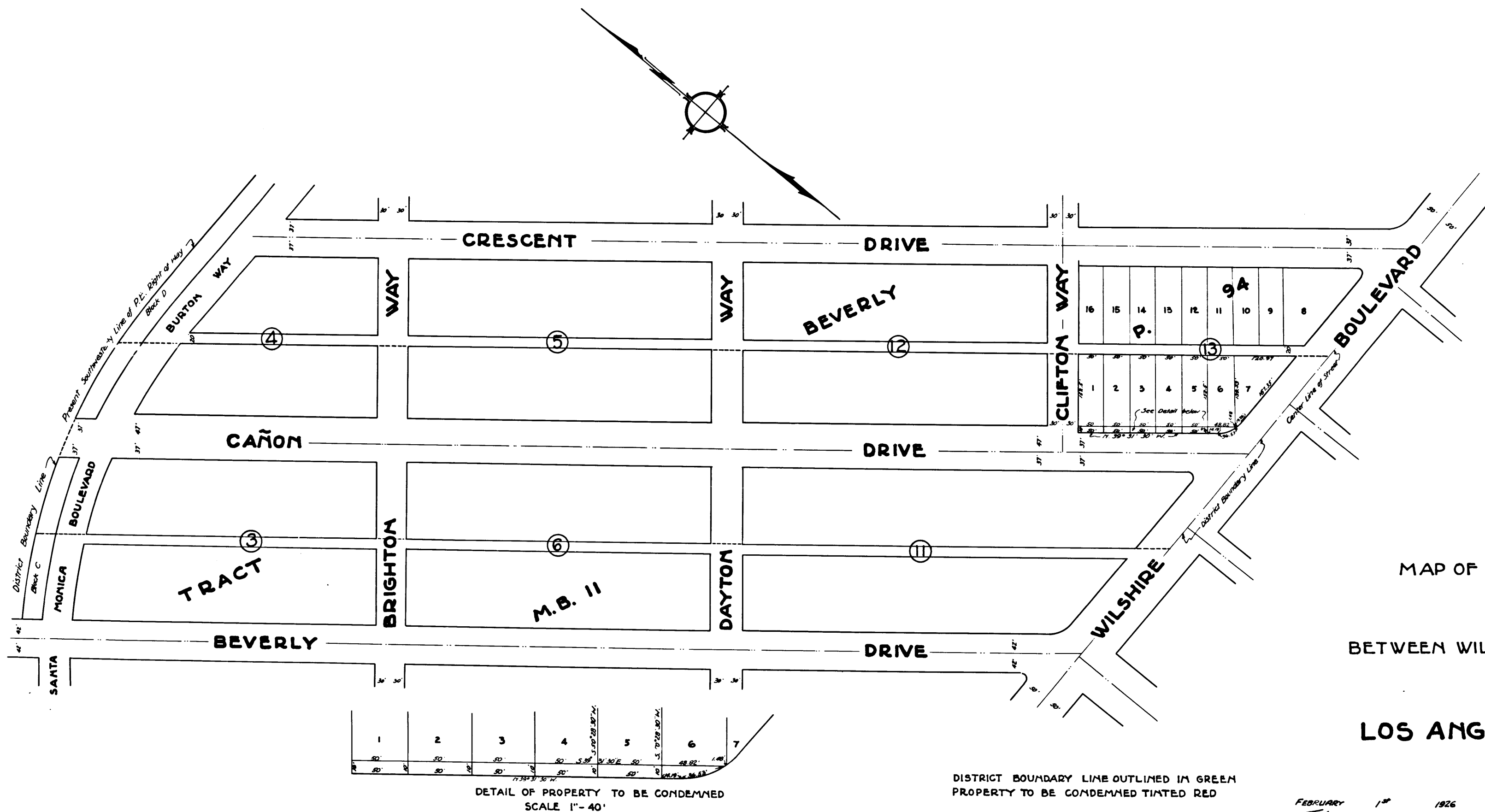
MAP OF THE DISTRICT TO BE ASSESSED  
FOR THE WIDENING OF  
**CAÑON DRIVE**  
BETWEEN WILSHIRE BOULEVARD AND CLIFTON WAY  
IN THE CITY OF  
**BEVERLY HILLS**  
**LOS ANGELES COUNTY, CALIFORNIA.**

SCALE 1" = 100'

FEBRUARY 1<sup>st</sup> 1926  
*J. H. Allen*

FEBRUARY 1<sup>st</sup> 1926  
*J. H. Allen*

C.F. 1376 -



DETAIL OF PROPERTY TO BE CONDEMNED  
SCALE 1" = 40'

DISTRICT BOUNDARY LINE OUTLINED IN GREEN  
PROPERTY TO BE CONDEMNED TINTED RED