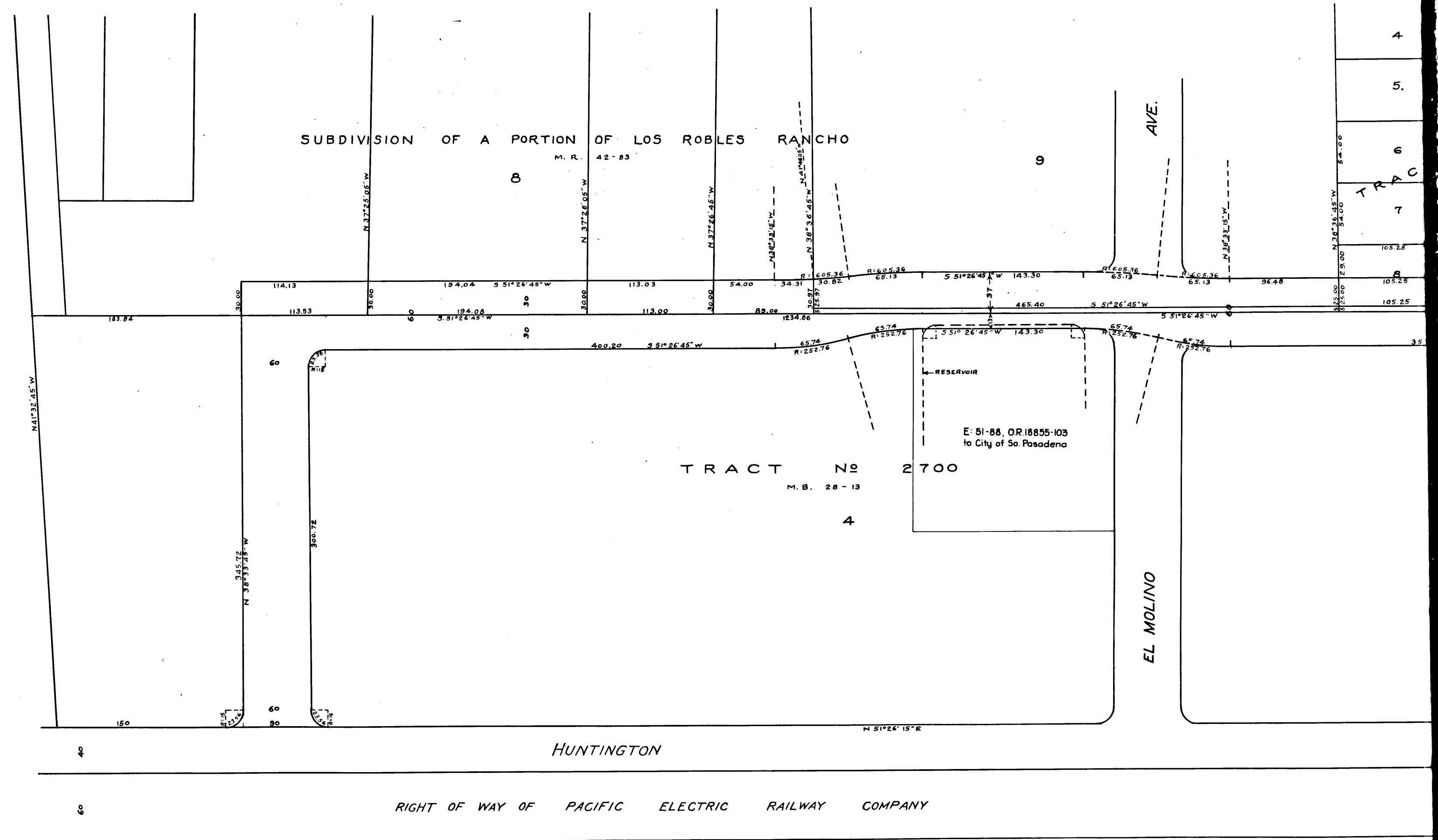
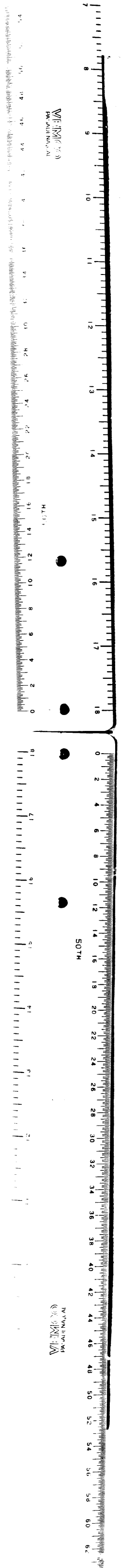


Superior Court Case No. 199939
 Suit for Condemnation
 Filed June 29th 1936
 City of San Marino, Plaintiff
 Vs.
 Gertrude De Blin et al., Def.
 Pending April 11, 1927
 Interlocutory decree rendered Nov 13, 1928
 Final Judgment in favor of Pltiff, as per map,
 rendered June 25, 1929
 D: 77-35 Jaa. Ek. 799-346
 Index #8

CITY OF SAN MARINO
 OFFICE OF CITY ENGINEER
 MAP SHOWING LAND TO
 BE ACQUIRED FOR STREET
 OPENING.
 DATE: OCT. 1925 APPROVED BY: *W. Chalmon* DRAWING NO.: 967
 DRAWN BY: WAM-HAR CITY ENGINEER

C.F. 1380 -



Index # 8

2

C.F. 1380 -