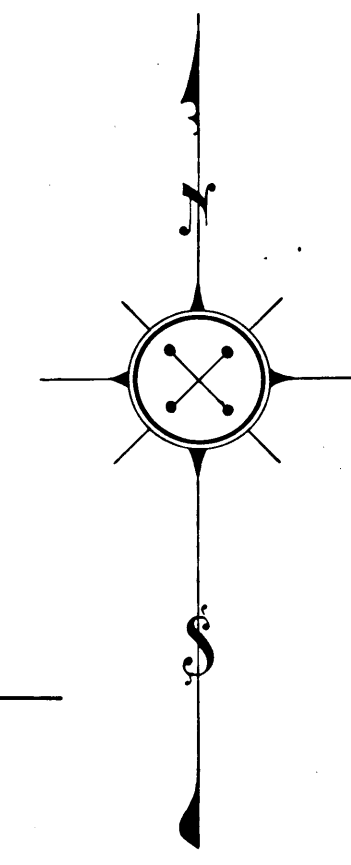
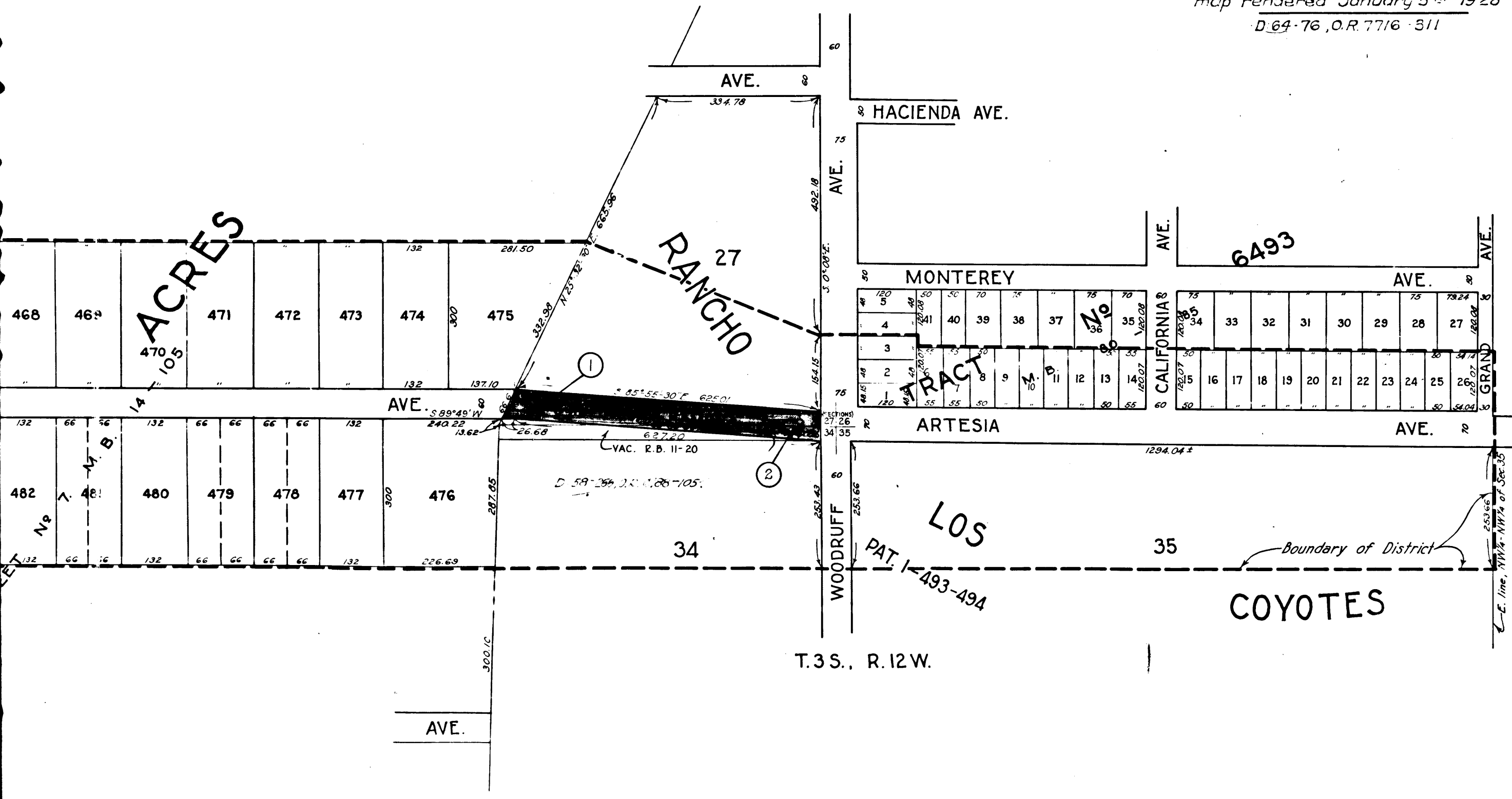


Superior Court Case No. 201869  
 Suit for Condemnation  
 Filed July 28<sup>th</sup> 1926  
 County of Los Angeles, Pltff.  
 Vs  
 Alpha V. Parmley et al., Def.  
 Pending Apr. 1<sup>st</sup> 1927  
 Final Judgment in favor of Pltff as per  
 map rendered January 5<sup>th</sup> 1928  
 D.64-76, O.R. 7716-311



COUNTY  
 STREET OPENING DISTRICT N° 81  
 MAP OF  
 PROPOSED OPENING and EXTENDING  
 OF  
**RAMONA AVENUE**  
 BETWEEN THE EASTERLY LINE OF SOMERSET ACRES  
 AND WOODRUFF AVE.  
 SHOWING

The exterior boundary of the district to be assessed therefor under  
 the provisions of the County Street Opening Act of 1923, Approved  
 May 11, 1923  
 Scale: 1"=150' May, 1926  
**J.E. ROCKHOLD, COUNTY SURVEYOR.**  
 Submitted: *Alfred Jones* Chief Deputy Approved: *J.E. Rockhold* County Surveyor.  
 Approved as to form  
**EVERETT W. MATTOON, COUNTY COUNSEL**  
 By: *Robert W. Bryant* Deputy

**LEGEND**  
 District Boundary Line - - - - -  
 Land sought to be condemned colored red

I hereby certify that the Board of Supervisors of Los Angeles  
 County did, on the 1<sup>st</sup> day of June, 1926, by resolution duly  
 adopted approve the accompanying map of the assessment district  
 of County Street Opening District N° 81 of the County of Los  
 Angeles for the opening and extending of RAMONA AVENUE.

Filed June 1<sup>st</sup>, 1926, in the  
 office of the County Surveyor  
 of Los Angeles County.  
**J.E. ROCKHOLD, COUNTY SURVEYOR.**  
 By: *Robert W. Bryant* Deputy.

L. E. LAMPTON, County Clerk  
 and Ex-Officio Clerk of the  
 Board of Supervisors of said  
 County of Los Angeles.  
 By: *William B. Heuer* Deputy.

Shr. # 33  
 A-351

C.F. 1383 -

S.O.D. N° 81	
Drawn By: F.S. Dodds	May, '26
Traced By: F.S. Dodds	May, '26
Checked By: R.B. Heuer	May, '26

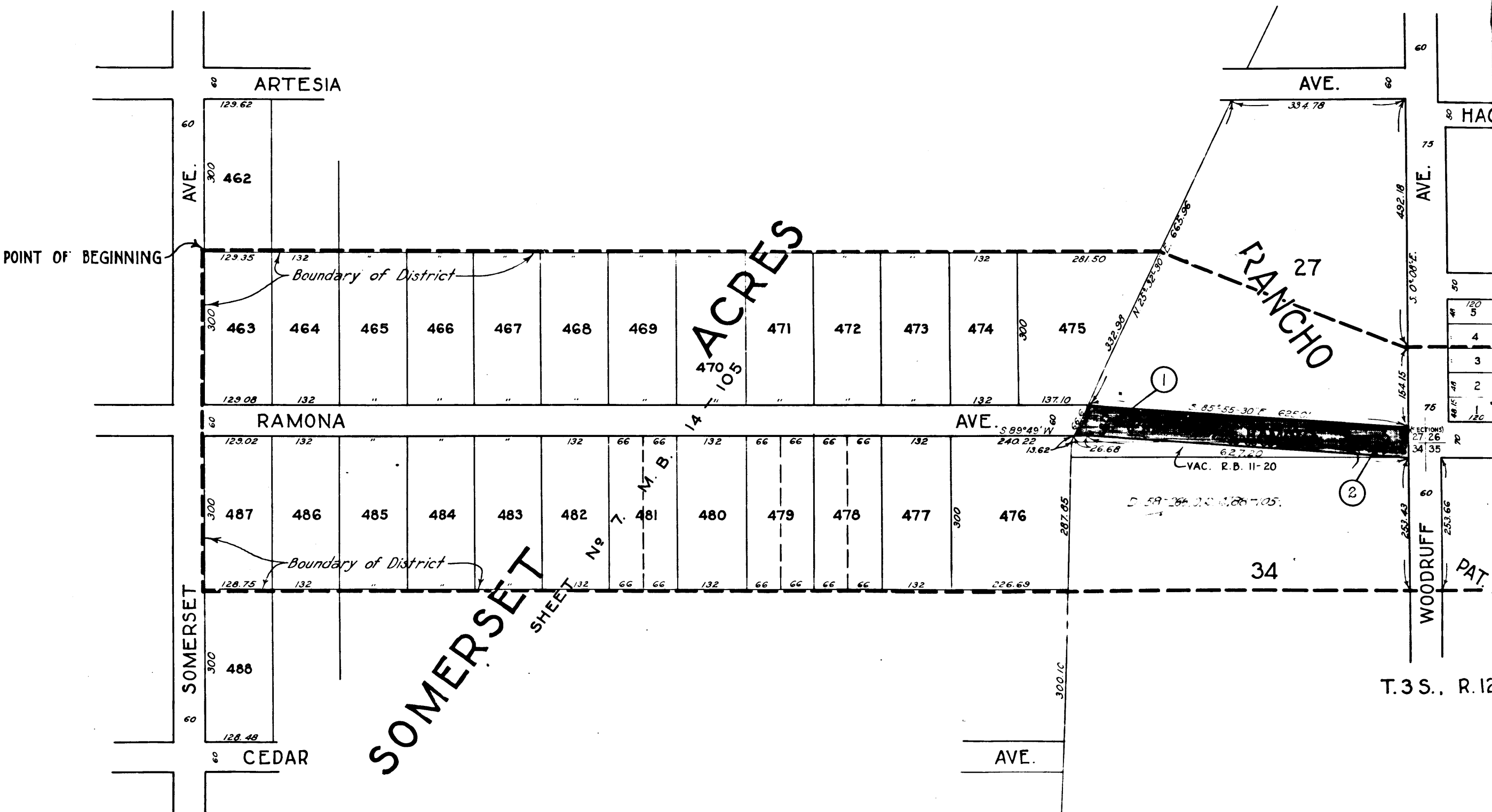


WINGO  
MANUAL

101

9 5 7

WINGO  
MANUAL



C.F. 1383 -

2