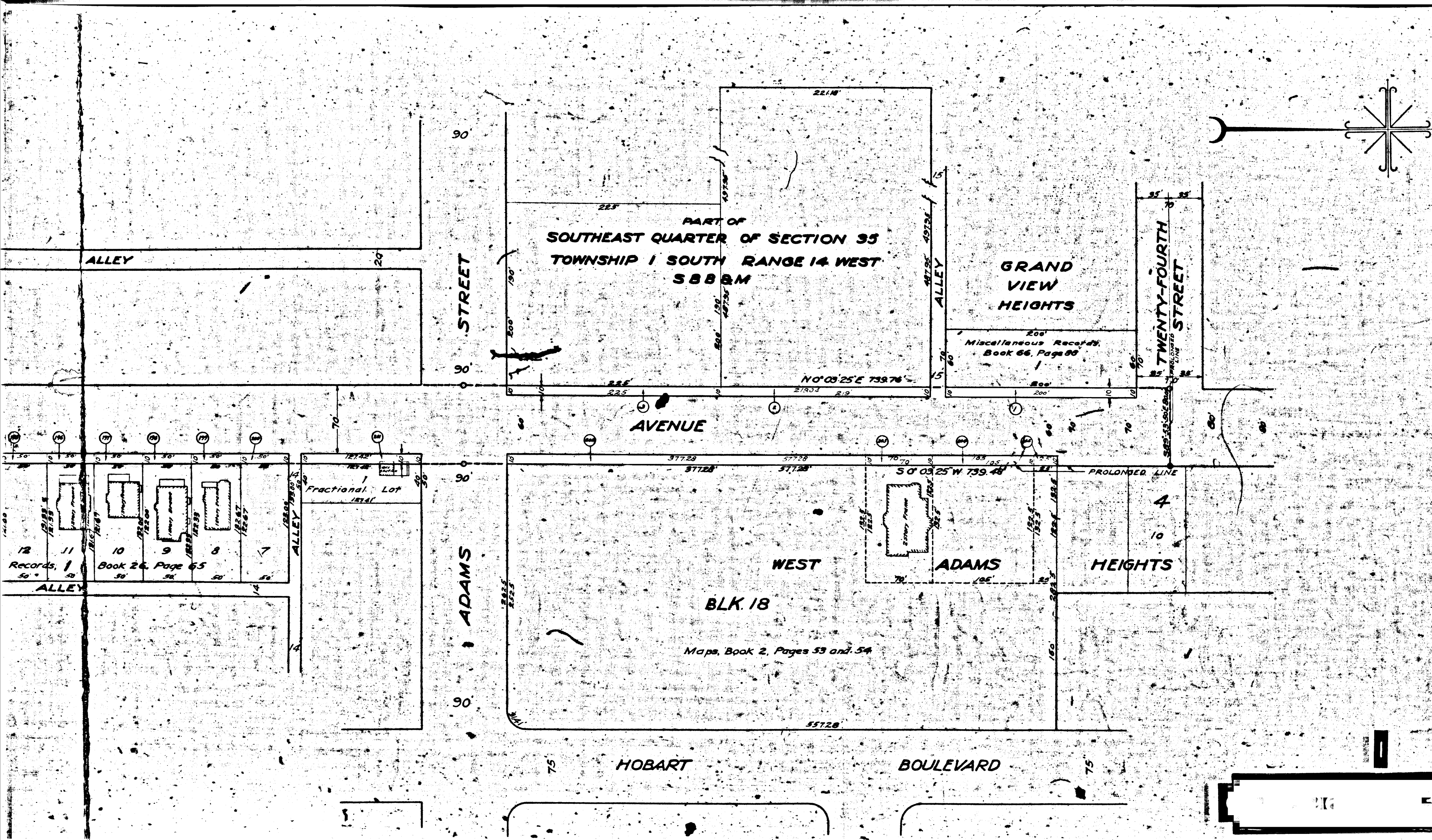


4083A



**MAP**  
 (CONSISTING OF 3 SHEETS)  
 SHOWING THE LAND TO BE CONDEMNED  
 FOR THE WIDENING  
 OF  
**WESTERN AVENUE**  
 BETWEEN  
**TWENTY-FOURTH STREET**  
 AND  
**SANTA BARBARA AVENUE**  
 IN THE

**CITY OF LOS ANGELES CALIFORNIA**  
 IN ACCORDANCE WITH ORDINANCES NOS. 53615 AND 54582  
 JOHN G. SHAW CITY ENGINEER JUNE 1926

SCALE  
 1" = 200'

Note: Land to be condemned shown colored red.  
 Dotted lines and dimensions show property holdings  
 where they differ from recorded subdivisions.  
 Figures in circles indicate the parcel numbers as set forth in  
 paragraph IX of the complaint.

Sht. 5  
 Superior Court Case No. 200444  
 Suit for Condemnation  
 Filed Sept. 25<sup>th</sup> 1926  
 City of Los Angeles, Pltff.,  
 Vs.  
 Edward D. French et al., Def.

Pending Apr. 1927  
 Interlocutory decree rendered Jan 8, 1929  
 Final judgment in favor of Plaintiff as  
 per map, rendered January 27th, 1930.

D:79-38, O.R. 9698-211.

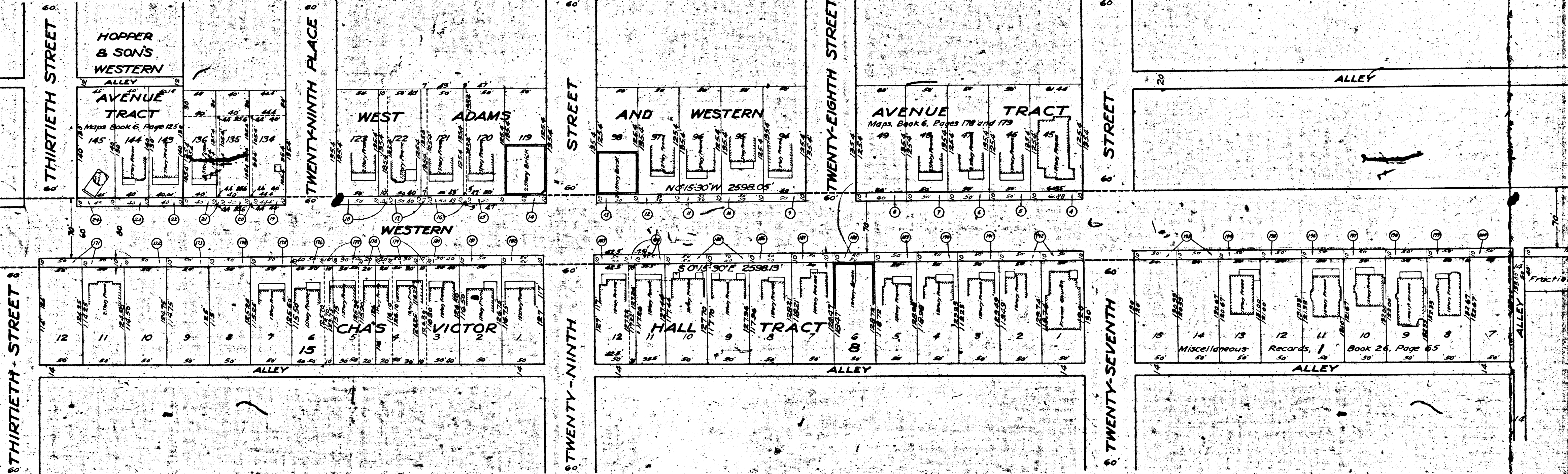
A. 3894

4083A



4088.A

4088.A



2