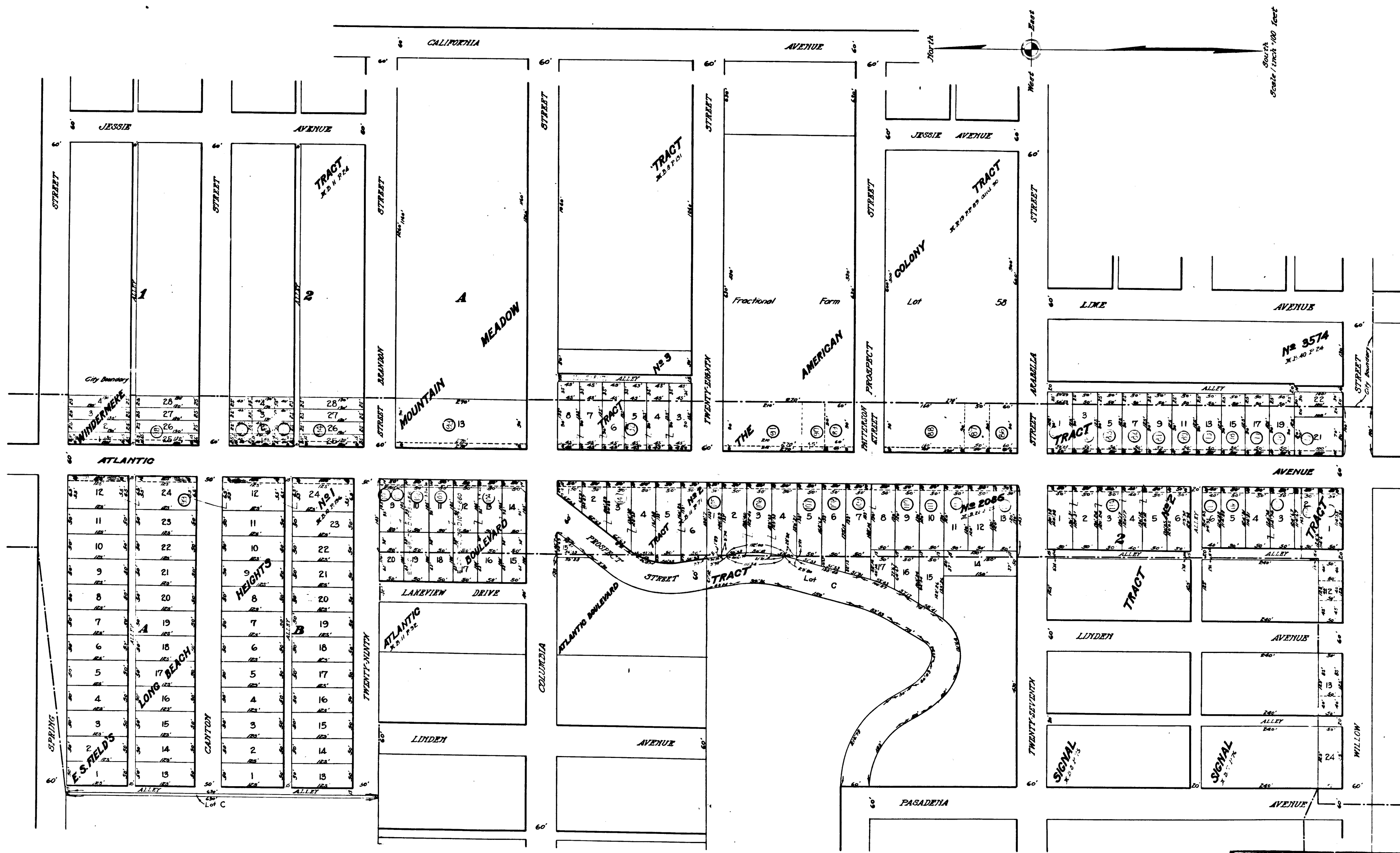


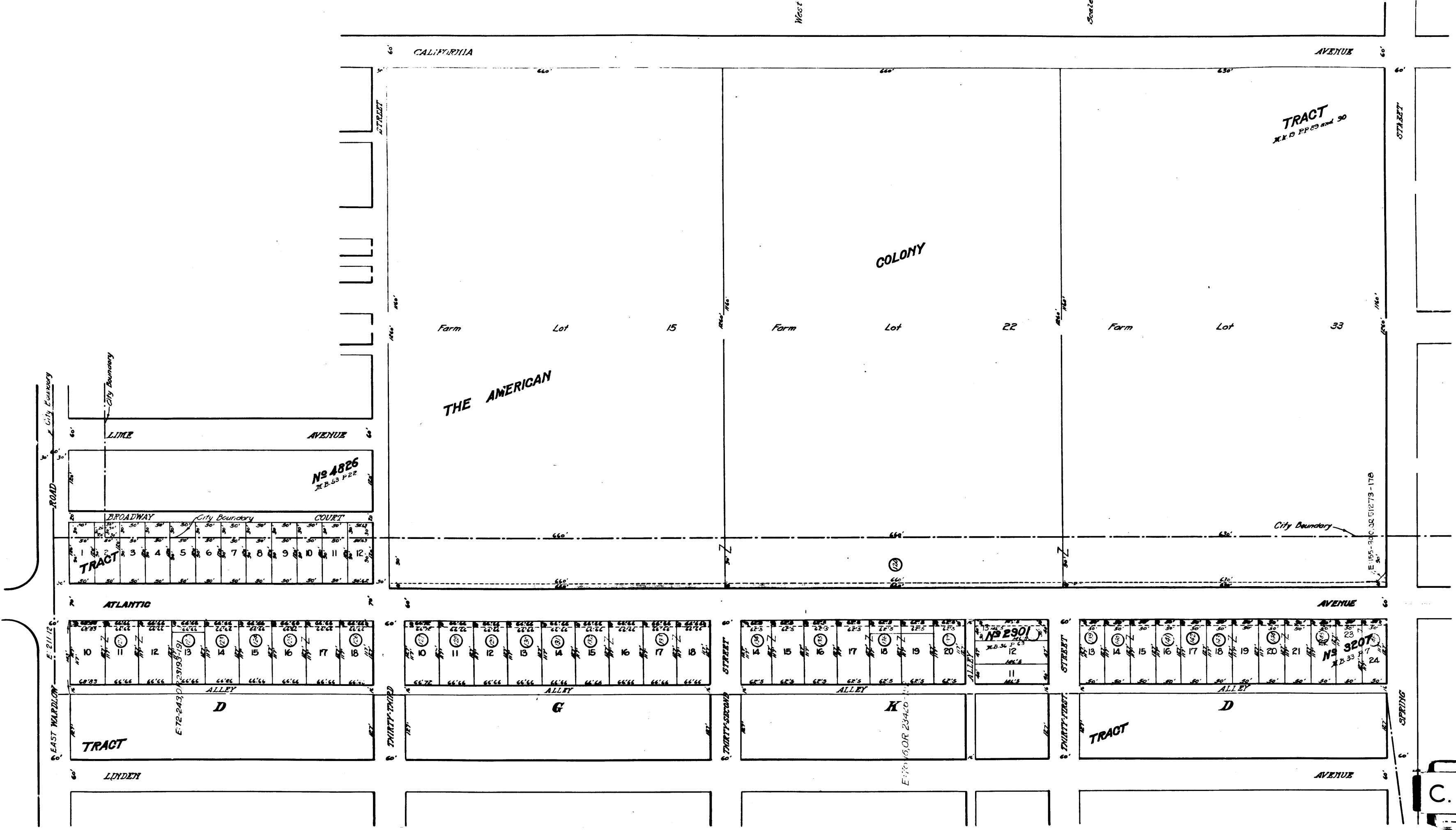
Superior Court Case No. 128035
Suit for Condemnation
Filed Aug. 30th 1926
City of Long Beach, Plaintiff
Vs
W. H. Trent et al, Defendants

Pending April 1927
Interlocutory decree as to all
parcels rendered June 17th 1927.
Judg. Bk. 645-1
Final judgment in favor of
Pltff as per map, rendered
Mar. 28th 1928.

O.R. 7840-229
D:66-150 Cert. AD-12568

C.F. 1397 1-3





C.F. 1397 3-3