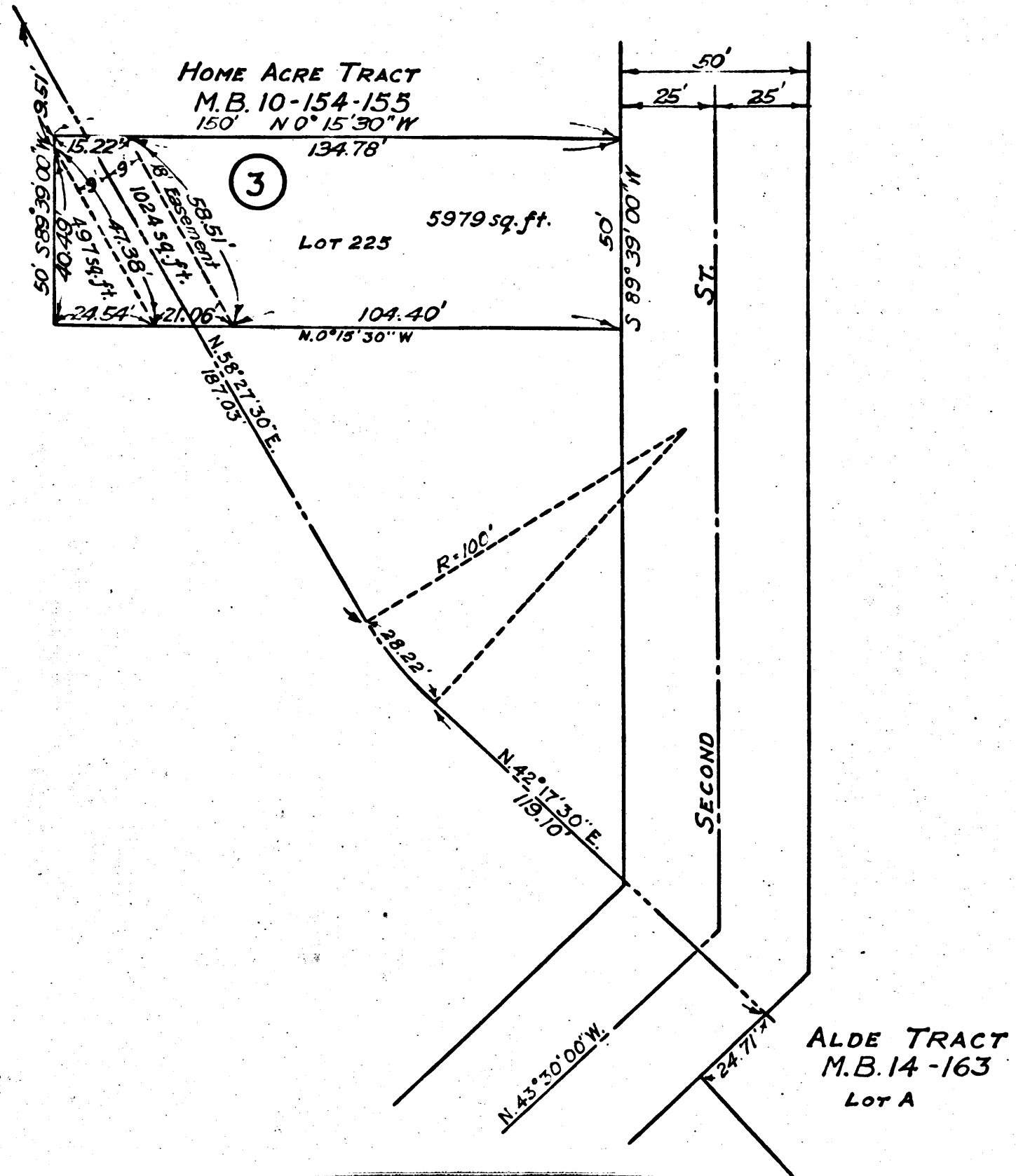


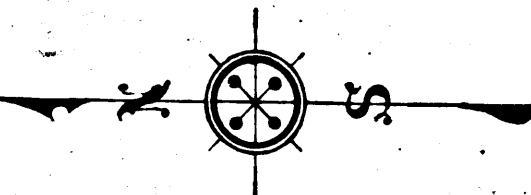
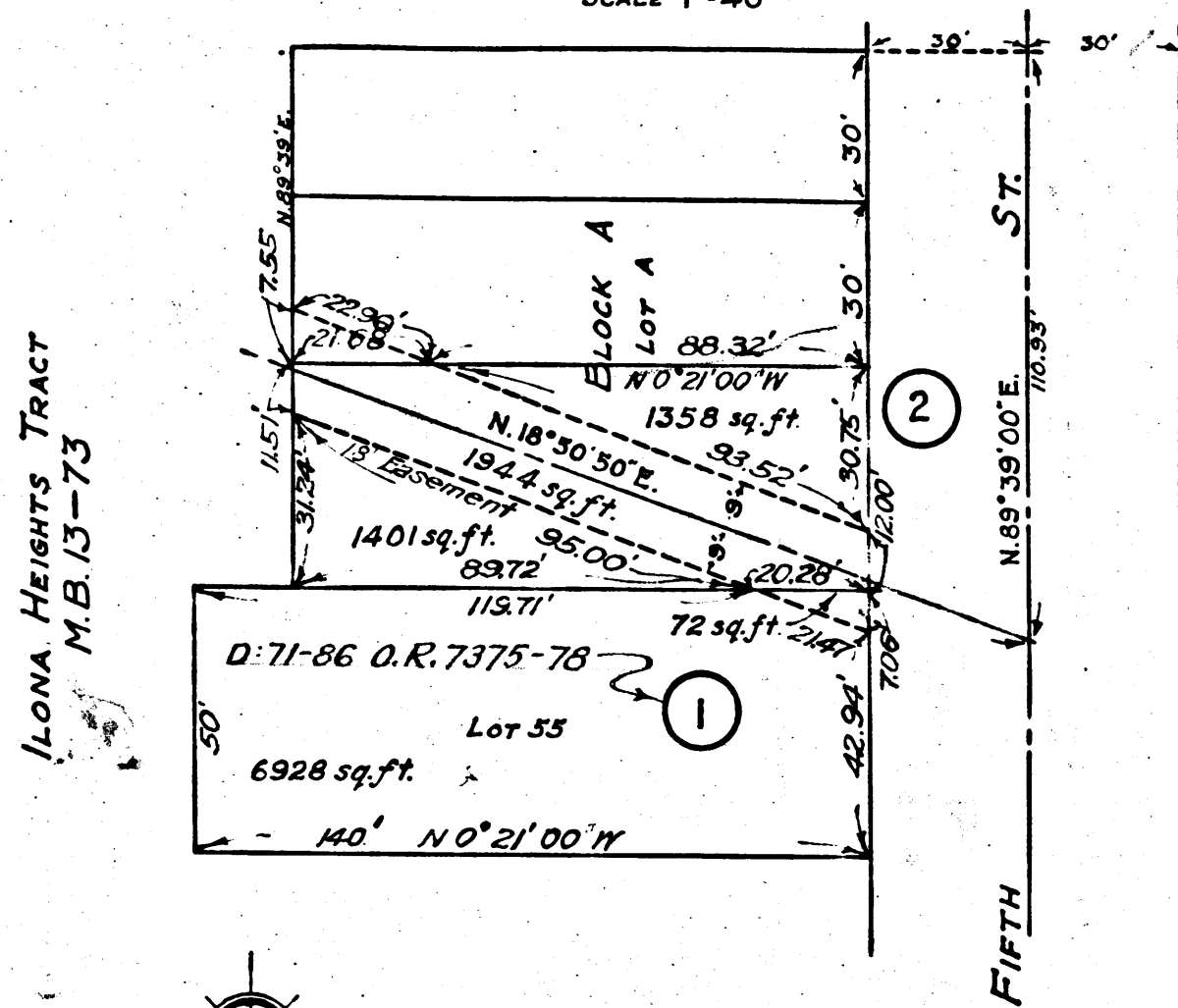
VEMCO  
PASADENA, CAL.



MAP SHOWING  
LAND TO BE CONDEMNED  
FOR  
DRAINAGE DISTRICT IMPROVEMENT N<sup>o</sup> 26

SCALE 1"=40'

DATE 8-13-28



Superior Court Case No. 262088  
Suit for Condemnation  
Filed Sept. 25<sup>th</sup> 1928  
County of Los Angeles, Pltff.

LEGEND.  
LAND TO BE CONDEMNED  
SHOWN COLORED RED.

*I.P. deposits on all plots 10-15-28*

D:78-128, O.R. 9678-209  
Interlocutory judgment as  
to parcel 3 rendered Nov. 20<sup>th</sup>  
1930. Luda. Bk. 764-314.  
Final judgment rendered  
11/19/30. Luda. Bk. 764-314.  
D: 148, O.R. 10503-576

C.F. 1603 -