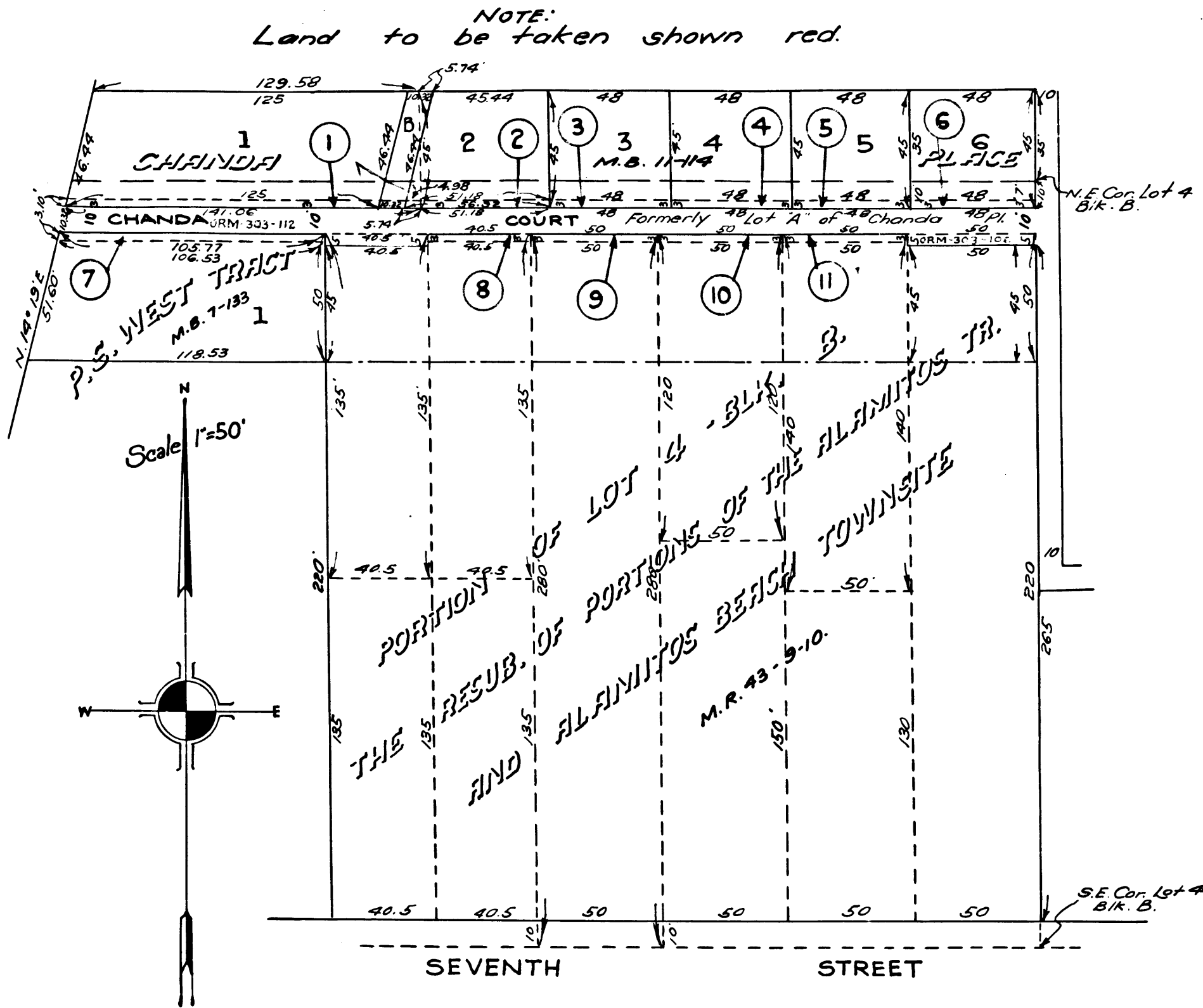


VEMCO  
PASADENA, CAL.

ALAMITOS AVENUE



Sheet 30  
SUPERIOR COURT CASE NO L.B.C.-2097  
Suit for Condemnation  
Filed Oct. 19, 28.  
City of Long Beach, Plff.  
vs.  
Samuel R. Lee, et. al. Def.

Final Judgment in favor of Pltff, as per  
map, rendered December 16, 1929.  
D:77-221 Jdg. BK 746 7/6  
D:77-243 CR 5581-237

C.F. 1619 -



VEMCO  
PASADENA, CAL.