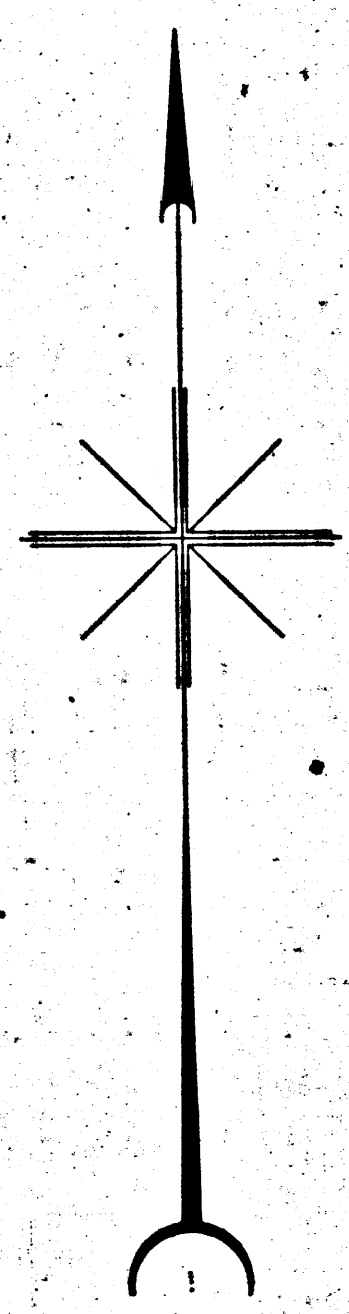
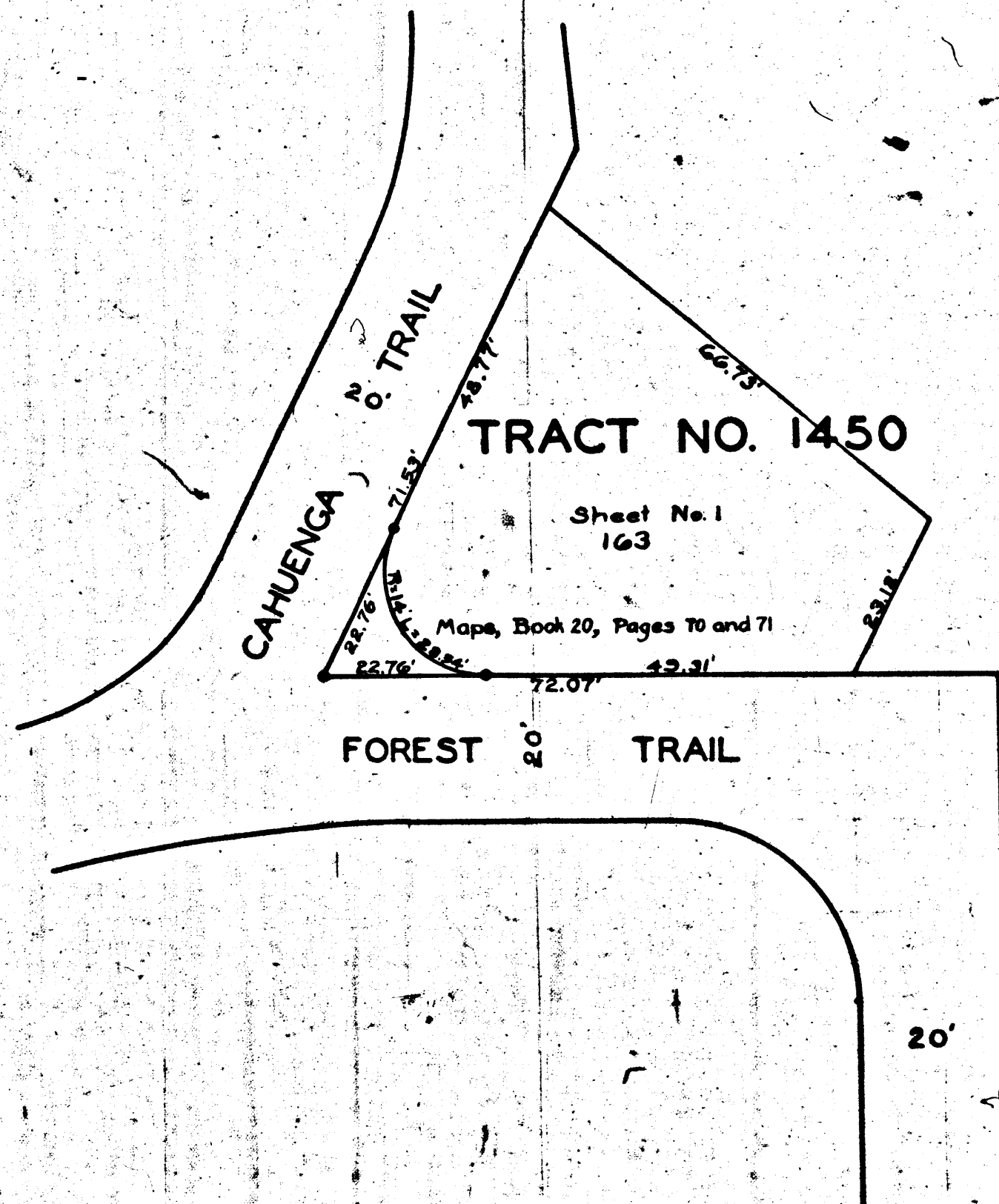


A-2504

RETURN TO CITY ENGINEER'S OFFICE
CITY OF LOS ANGELES
PROPERTY OF THE

A-2504



VALLEY VIEW TRAIL AND CAHUENGA TRAIL I.D.
FILE NO. 3738-28 CHARGE NO. 76240

A-2504

RETURN TO CITY ENGINEER'S OFFICE
CITY OF LOS ANGELES
PROPERTY OF THE

A-2504

MAP
 SHOWING THE LAND TO BE CONDEMNED
 FOR THE WIDENING AND LAYING OUT OF
FOREST TRAIL
 AT THE INTERSECTION OF
 THE SOUTHEASTERLY LINE OF
CAHUENGA TRAIL
 WITH THE NORTHERLY LINE OF
FOREST TRAIL
 IN THE CITY OF LOS ANGELES, CALIFORNIA.
 IN ACCORDANCE WITH ORDINANCE NO. 61708
 JOHN C. SHAW CITY ENGINEER OCTOBER 1928
 SCALE 1 INCH = 20 FEET

NOTE
 Land to be condemned shown colored red.
*Superior Court Case No. 264274
 Suit for Condemnation
 Filed Oct. 25th 1928
 City of Los Angeles, Plaintiff
 Vs
 Gertrude E. Decrow et al, Def.*
 Final judgment in favor of Pl'ff.
 as per map, rendered April 3, 1929.

D:75-35, O.R. 6143-142
Sht. 40

A-5294

1072-1073

A-5294