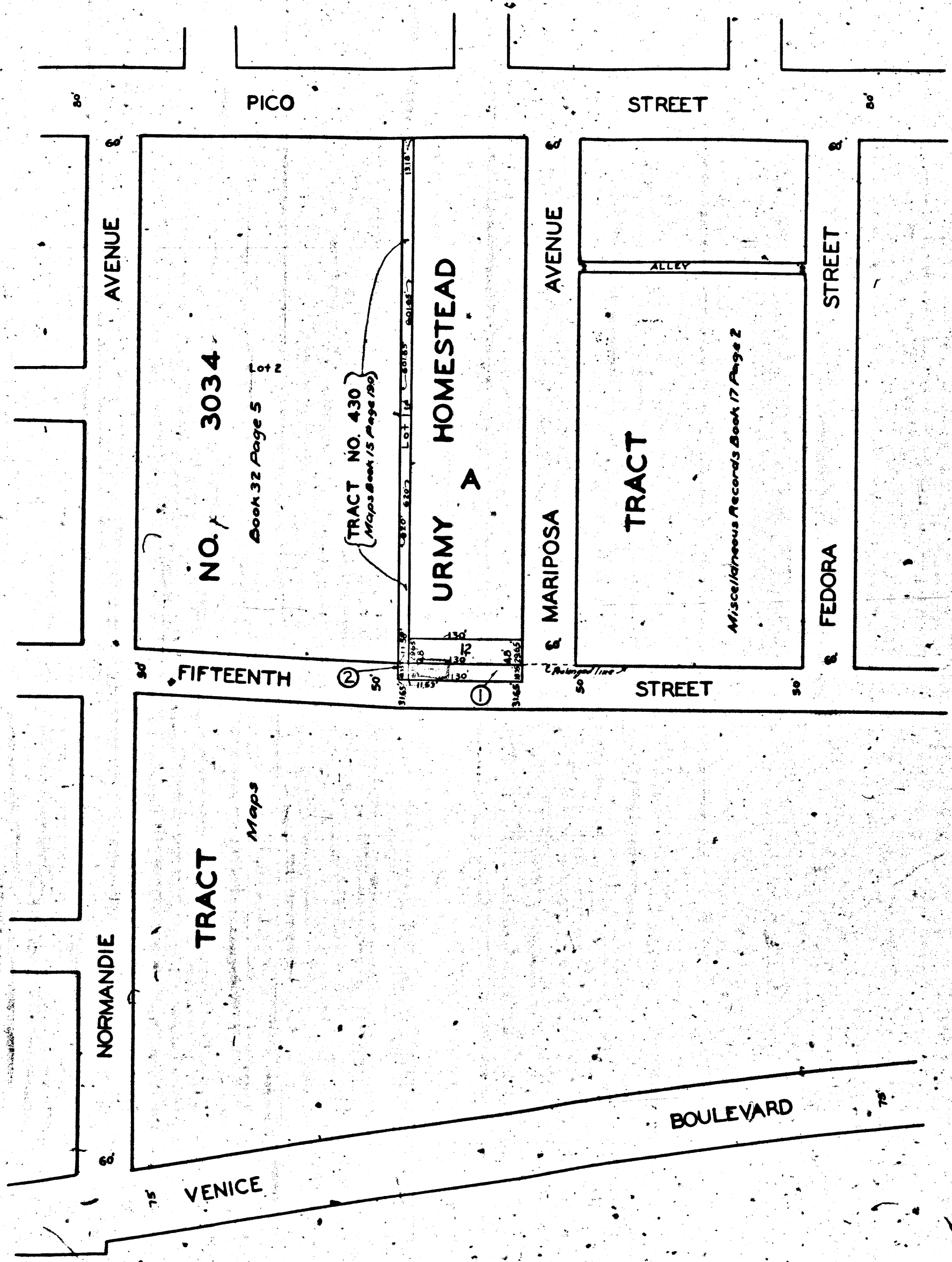


V 500

CITY OF LOS ANGELES
BOULEVARD DE LA

A-2355

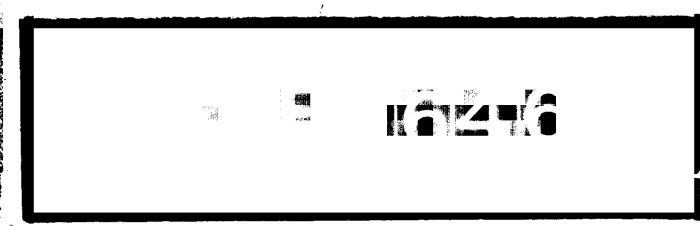


MAP
 SHOWING LAND TO BE CONDEMNED
 FOR THE
 WIDENING AND LAYING OUT
 OF
FIFTEENTH STREET
 FROM
MARIPOSA AVENUE
 TO
 A POINT APPROXIMATELY ONE HUNDRED
 FORTY-TWO (142) FEET WESTERLY THEREOF
 IN THE
 CITY OF LOS ANGELES CAL

IN ACCORDANCE WITH ORDINANCES NOS. 60604 AND 62044
 JOHN C. SHAW CITY ENGINEER OCTOBER 1928
 SCALE: 1 IN = 100 FT

NOTE: Land to be condemned shown colored red.
 Figures in circles indicate the parcel numbers as set forth in
 paragraph VII of the complaint.

Superior Court Case No. 267428
 Suit for Condemnation
 Filed Dec. 11, 1928
 City of Los Angeles Plff.
 Vs.
 Ernest Stevenson et al. Def.
 Case dismissed Dec. 24th 1929.



A-5322

A-2355

A-2355