

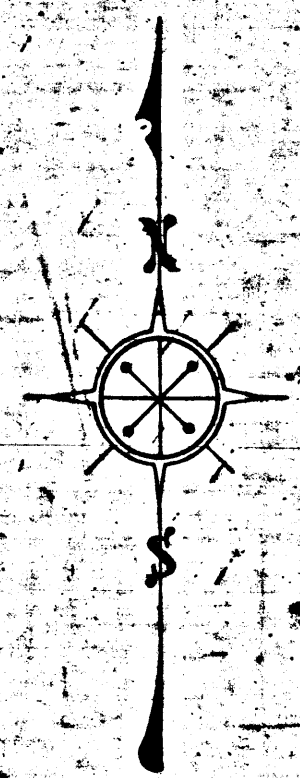
**EXHIBIT "A"**

ACQUISITION AND IMPROVEMENT DISTRICT NO 89  
OF THE COUNTY OF LOS ANGELES

FOR  
THE OPENING, EXTENDING, IMPROVEMENT OF AND WORK UPON  
**CEDAR AVENUE**

MAP SHOWING PROPERTY TO BE ACQUIRED IN ACCORDANCE WITH THE PROVISIONS  
OF THE "ACQUISITION AND IMPROVEMENT ACT OF 1925" APPROVED MAY, 23, 1925.  
AUGUST, 1928.

J.E. ROCKHOLD - COUNTY SURVEYOR

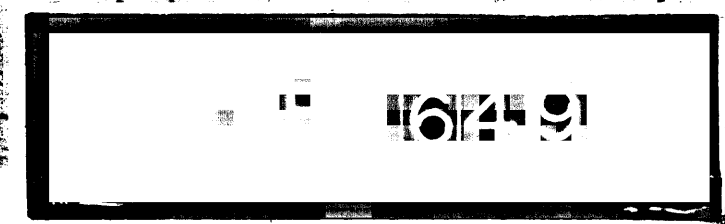


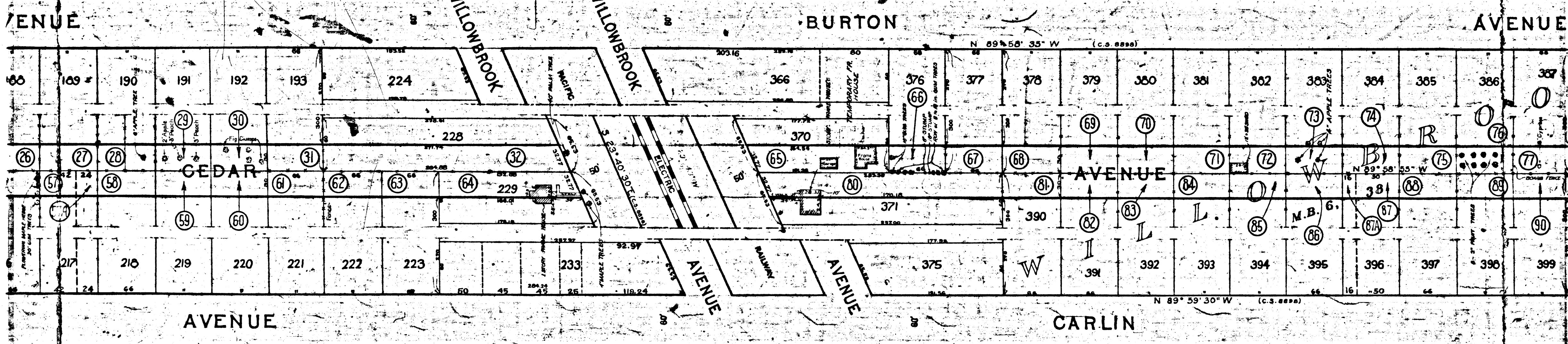
**LEGEND**  
LAND SOUGHT TO BE ACQUIRED SHOWN IN RED.  
NUMBERS IN CIRCLES INDICATE PARCELS SOUGHT TO BE CONDEMNED.  
THE PARCELS ARE DESCRIBED IN PARAGRAPH VII OF THE COMPLAINT.  
PORTION COLORED RED SHOWS LOCATION, GENERAL ROUTE AND  
TERMINI OF PUBLIC ROAD TO BE CONDEMNED.

Superior Court Case No. 265947  
Suit for Condemnation  
Filed Nov. 19, 1928  
County of Los Angeles, Pltff.

A&I DISTRICT	NO. 89
Drawn By	Huston, August '27
Traced By	Huston, August '27
Checked By	Gibney, October '27

Case dismissed Feb. 4, 1936.





2

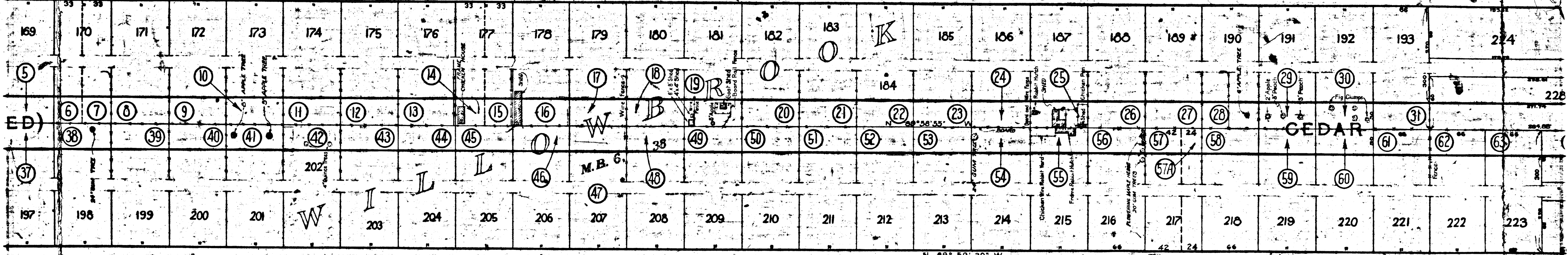
10219

RTON

BURTON

AVENUE

N 89° 58' 35" W



ED)

CEDAR

CARLIN

AVENUE

N 89° 59' 30" W

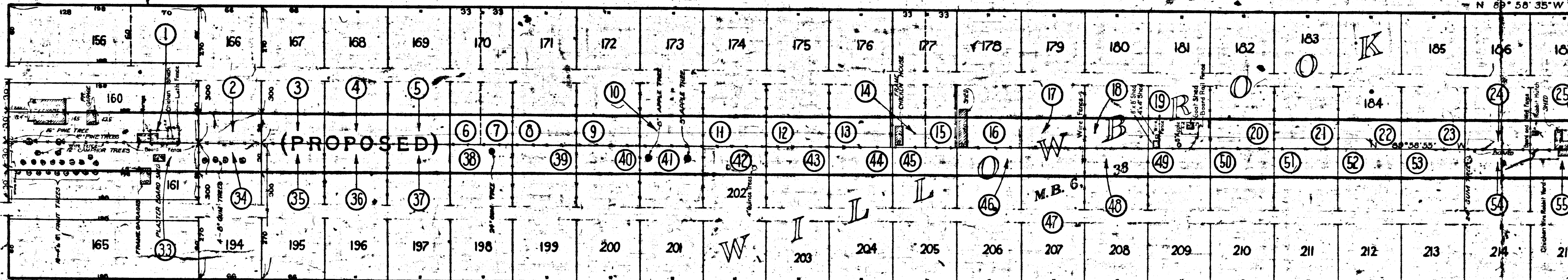
16749

COMPTON AVENUE

BURTON

BURTON

N 69° 58' 35" W



CARLIN

N 69° 59' 30" W

4

