

ANTA GERTRUDES

R 1-156 of 150

LOS ANGELES COUNTY FLOOD CONTROL DISTRICT GABRIEL RIVER

(PROPOSED) FIRESTONE

RANCHO SUBDIVIDED FOR THE SANTA GERTRUDES GERTRUDES

M. R. - 1-502

SOUTHERN PACIFIC

R.R.

C.S. 6307

R.R.

NE Cor of SW 1/4 of NE 1/4 of Sec. 11, T35 R12 W

LITTLE LAKE

D 73-199

ASSOCIATION

BOULEVARD

D: 5607-109

SEE C.F. 1981

C.F. 1655 3-17

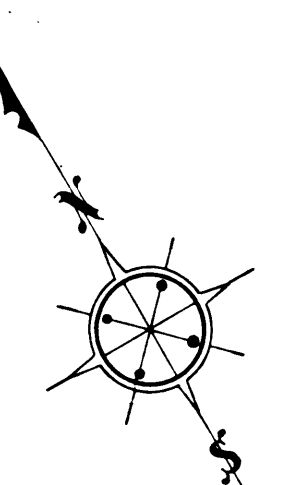
TRACT No 6299 M. B. 99-91-92

A&I.D. NO. 41  
DRAWN BY G.W. Mook Mar. 1927  
TRACED BY Mook & Atkinson Mar. 1927  
CHECKED BY Mulford & Woody Oct. 1927

SHEET 3 OF 7 SHEETS

SCALE 1" = 40'

SEE SHEET NO. 4



SHEET 3 OF 7 SHEETS

TRACT DISTRICT No 71

44

DOWNNEY & SANFORD BRIDGE & ROAD

TRACT No 1538

Parcel of land described in a deed to Jacob I. Bohsim Recorded in Book 6226 page 157 of Deeds.

RANCHO SANTA GERTRUDES

P. 1-156 to 158

SEE C.F. 1981

BOULEVARD

ASSOCIATION

TRACT No 1538

SANTA

RANCHO SUBDIVIDED FOR THE SANTA GERTRUDE

WOODRUFF

PANGBORN AVE.

DOWNNEY-NORWALK ROAD

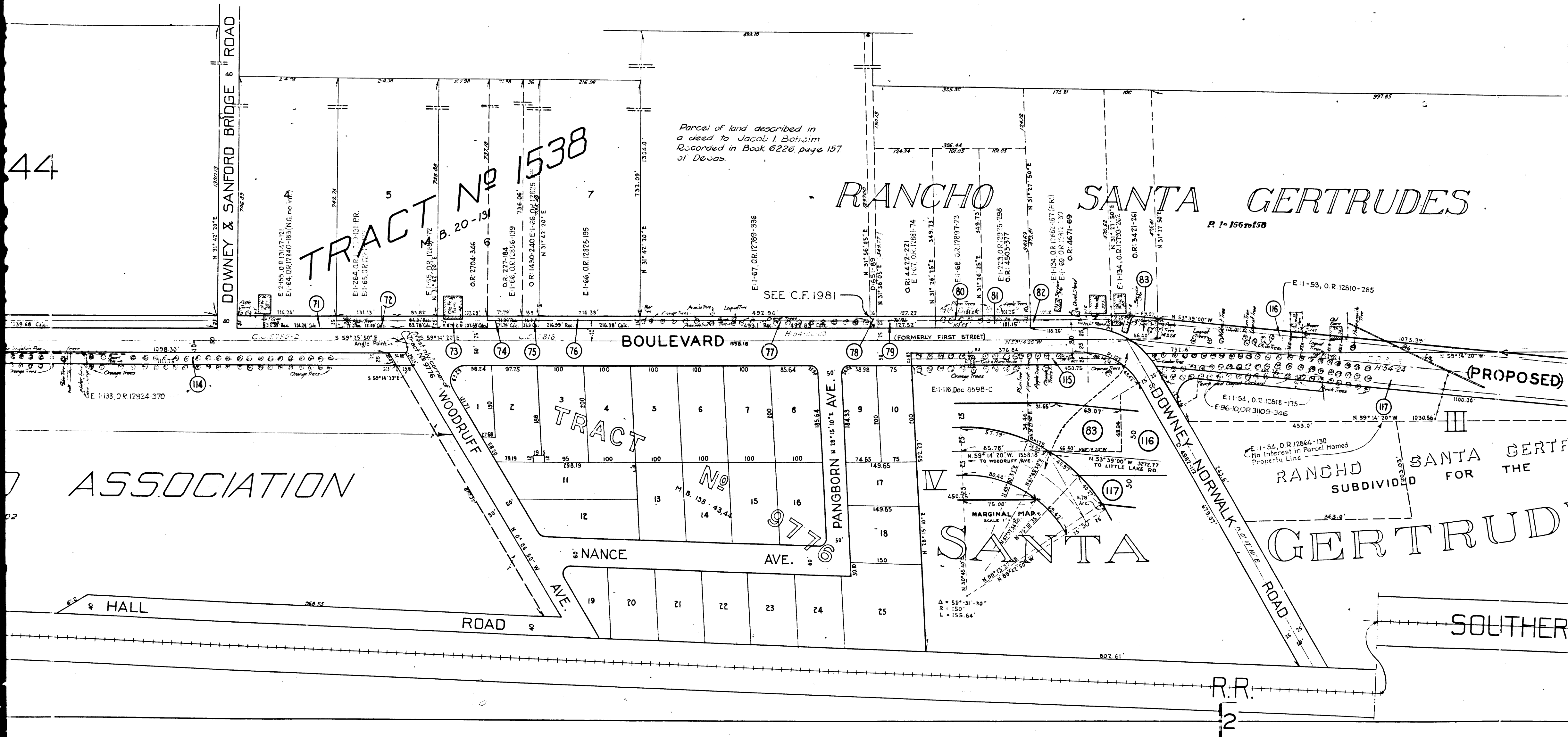
NANCE AVE.

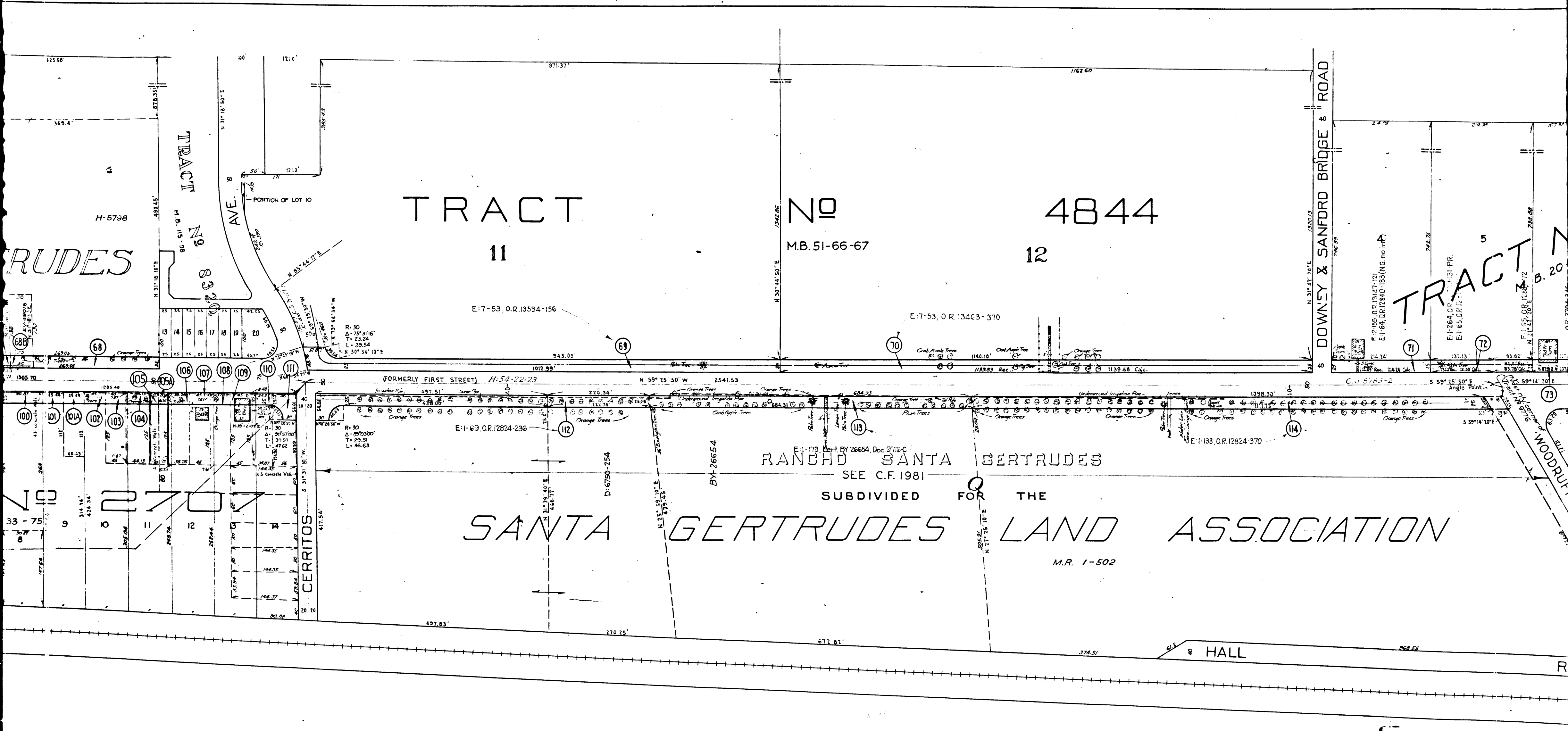
HALL ROAD

SOUTHERN

R.R.

C.F. 1655 3-7





GRUDES

TRACT NO 4844  
M.B. 51-66-67 12

TRACT NO 20

RANCHO SANTA GERTRUDES  
SEE C.F. 1981  
SUBDIVIDED FOR THE  
SANTA GERTRUDES LAND ASSOCIATION  
M.R. 1-502

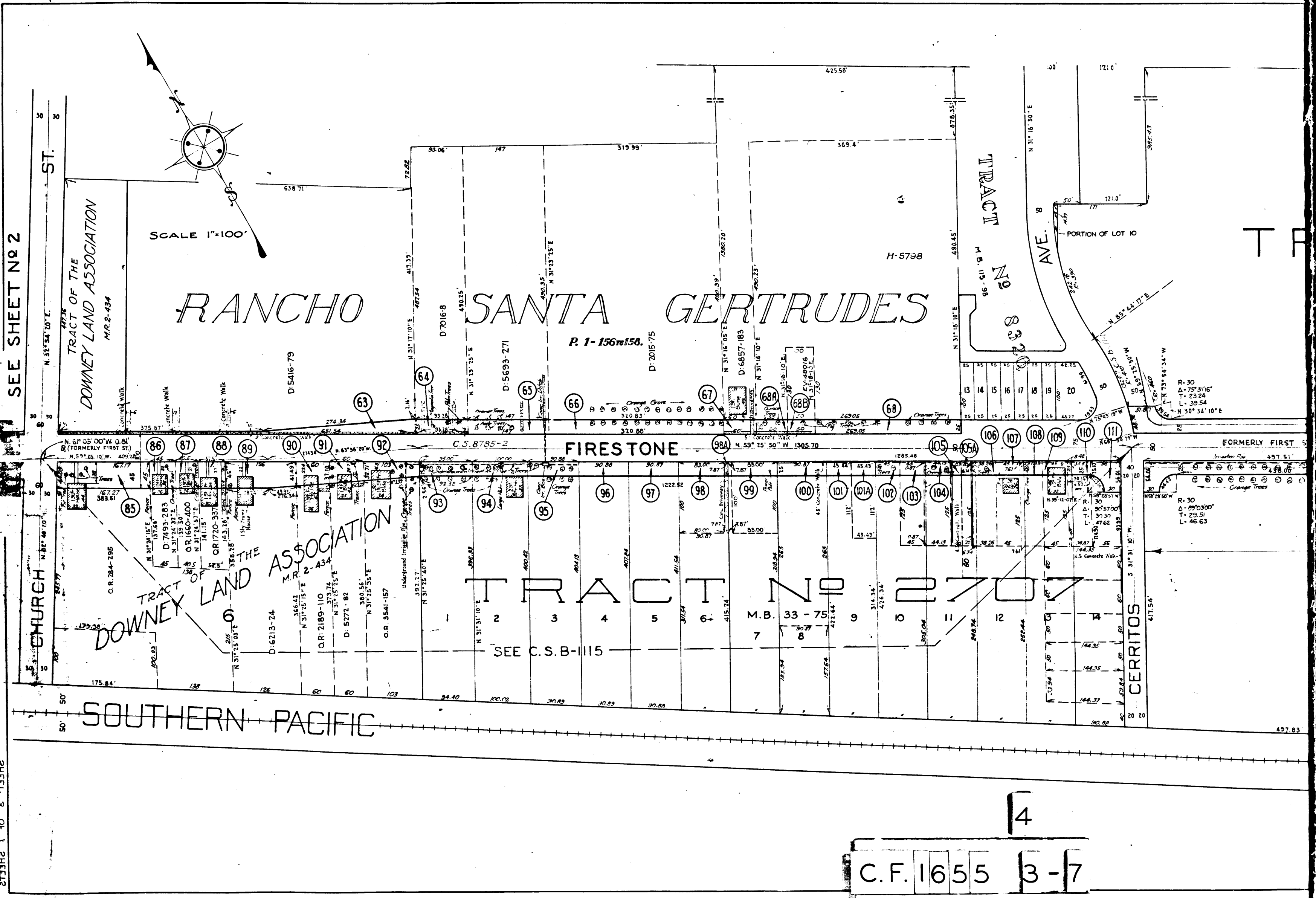
3  
C.F. 1655 3-7



VENCO  
PACIFIC

SEE SHEET No 2

SEE SHEET No 1



SCALE 1"=100'

# RANCHO SANTA GERTRUDES

FIRESTONE

## TRACT No 2707

SOUTHERN PACIFIC

TRACT No 833

TRACT OF THE  
DOWNEY LAND ASSOCIATION  
M.R. 2-434

TRACT OF THE  
DOWNEY LAND ASSOCIATION  
M.R. 2-434

C.F. 1655 3-7

4