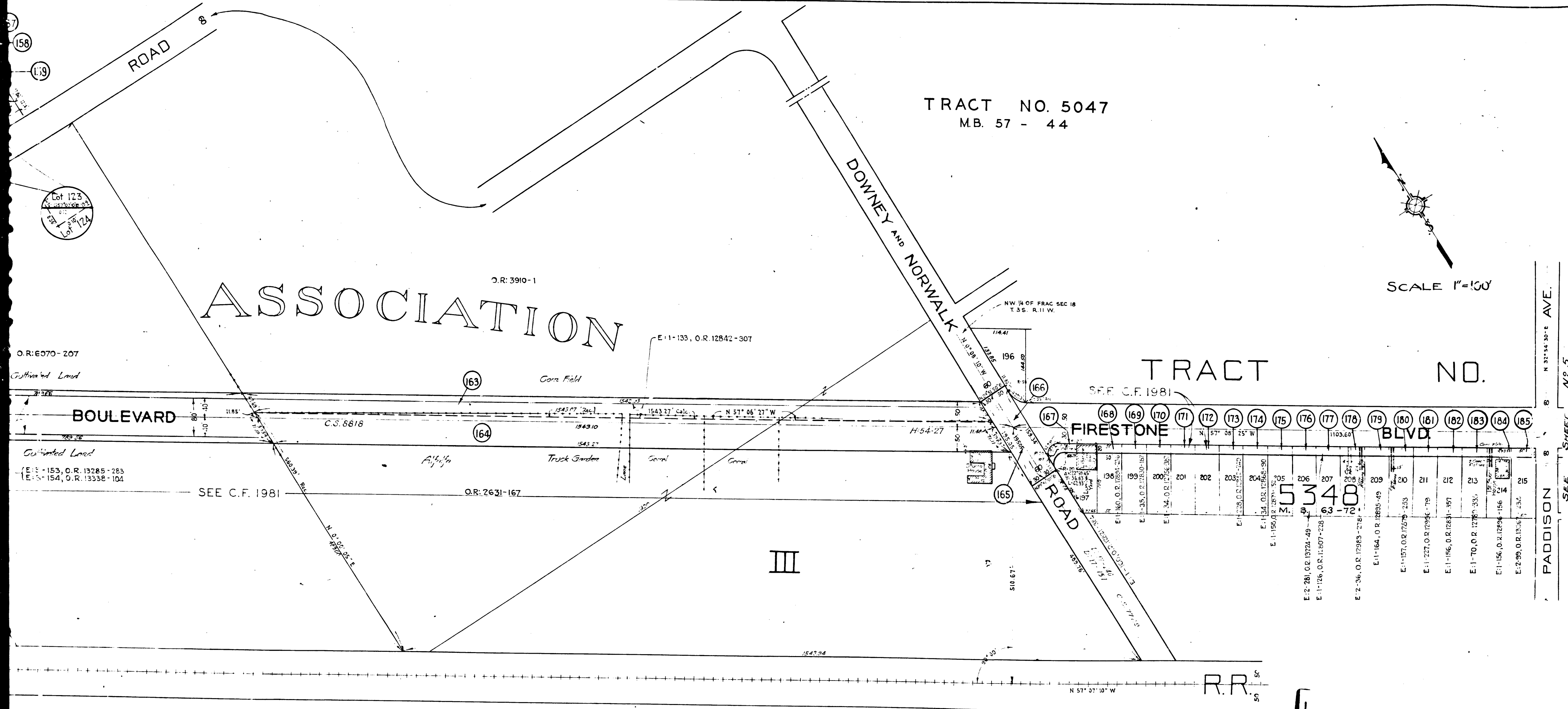
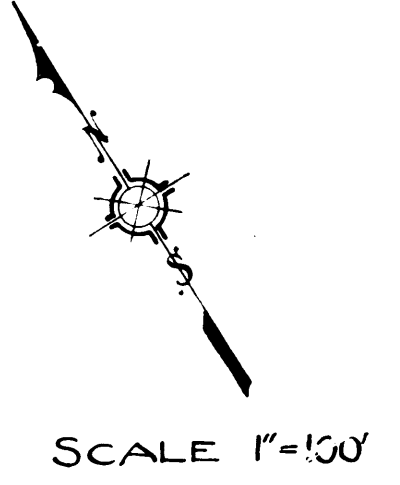


TRACT NO. 5047
M.B. 57 - 44

ASSOCIATION

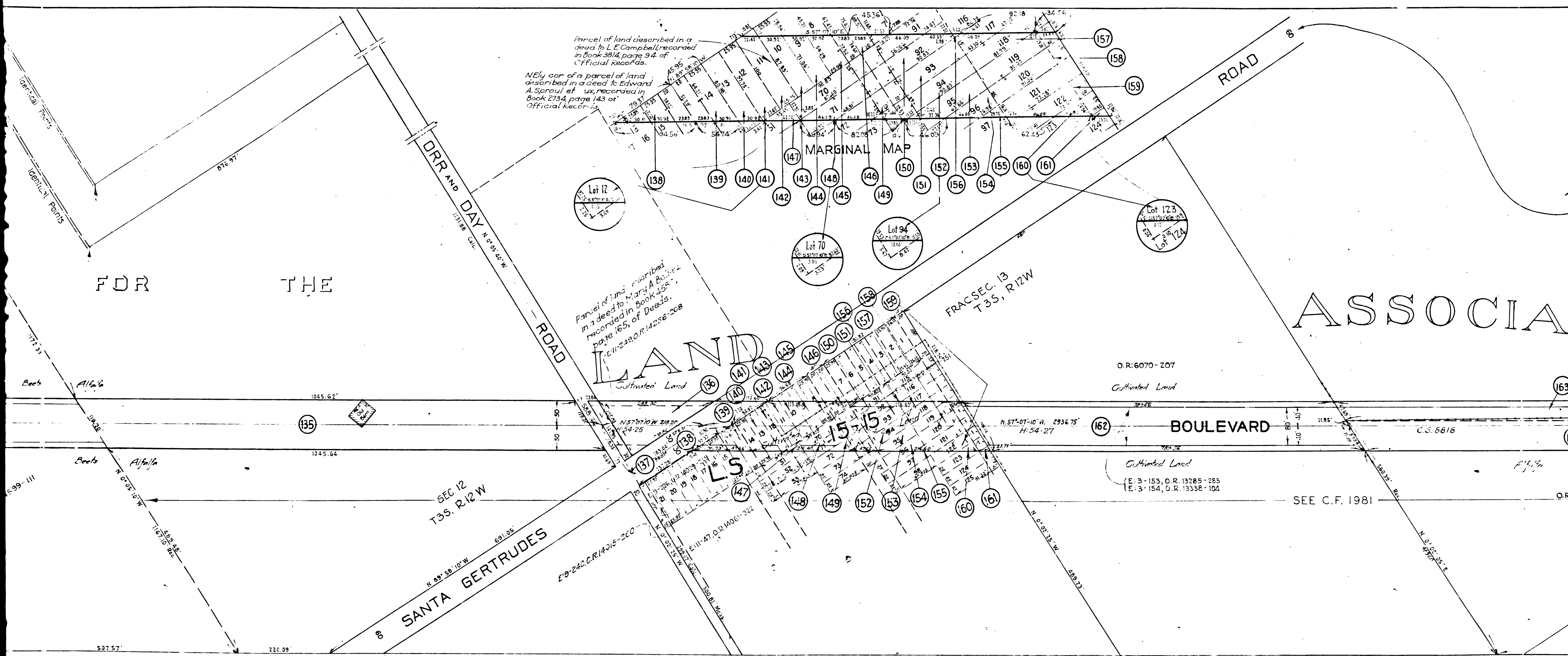


C.F. 1655 4-17

SA-433
SHEET 4 of 7 SHEETS
A. & I. No. 41
DRAWN BY G.W. MOORE
TRACED BY M. J. O'NEILL
CHECKED BY M. J. O'NEILL

PADDISON SEE SHEET N.P. 5





Parcel of land described in a deed to L.E. Campbell, recorded in Book 3814, page 94 of Official Records.
 NEly cor of a parcel of land described in a deed to Edward A. Sprout et ux, recorded in Book 2734, page 143 of Official Records.

Parcel of land described in a deed to Mary A. Baker, recorded in Book 155, page 165, of Deeds.
 E-11-243, O.R. 14256-208

O.R. 6070-207

Cultivated Land

Cultivated Land
 E-3-153, O.R. 13285-283
 E-3-154, O.R. 13338-104

SEE C.F. 1981

O.R. 2631-

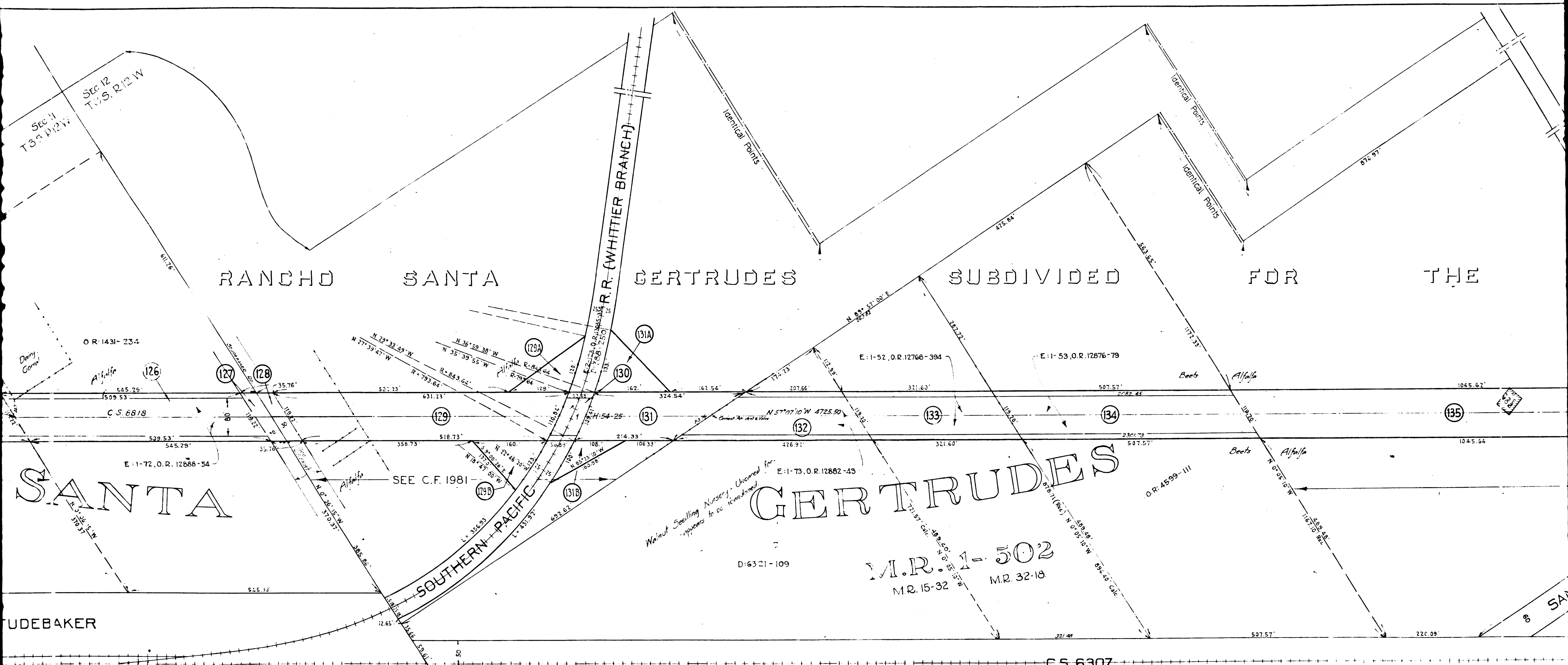
12

C.F. 1655 4-7

RANCHO SANTA GERTRUDES SUBDIVIDED FOR THE

SANTA

GERTRUDES



Walnut Seedling Nursery - Uncared for - appears to be abandoned

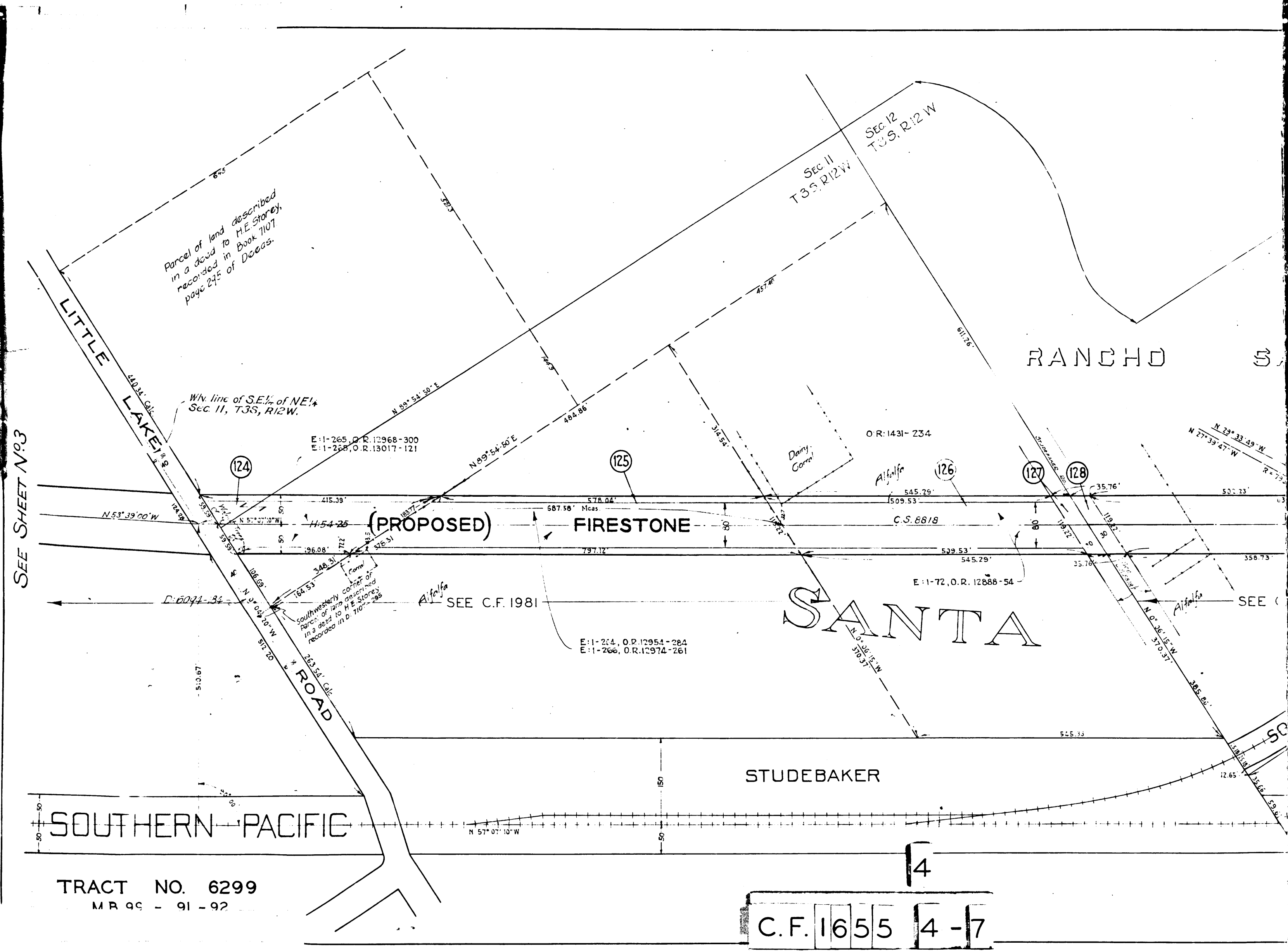
D:6321-109

M.R. 1-502
M.R. 15-32 M.R. 32-18

C.S. 6307

3

C.F. 1655 4-7



SEE SHEET N^o 3

C.F. 1655 4-7