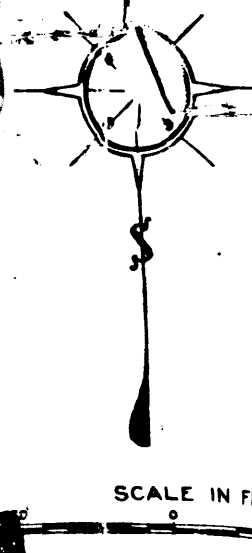
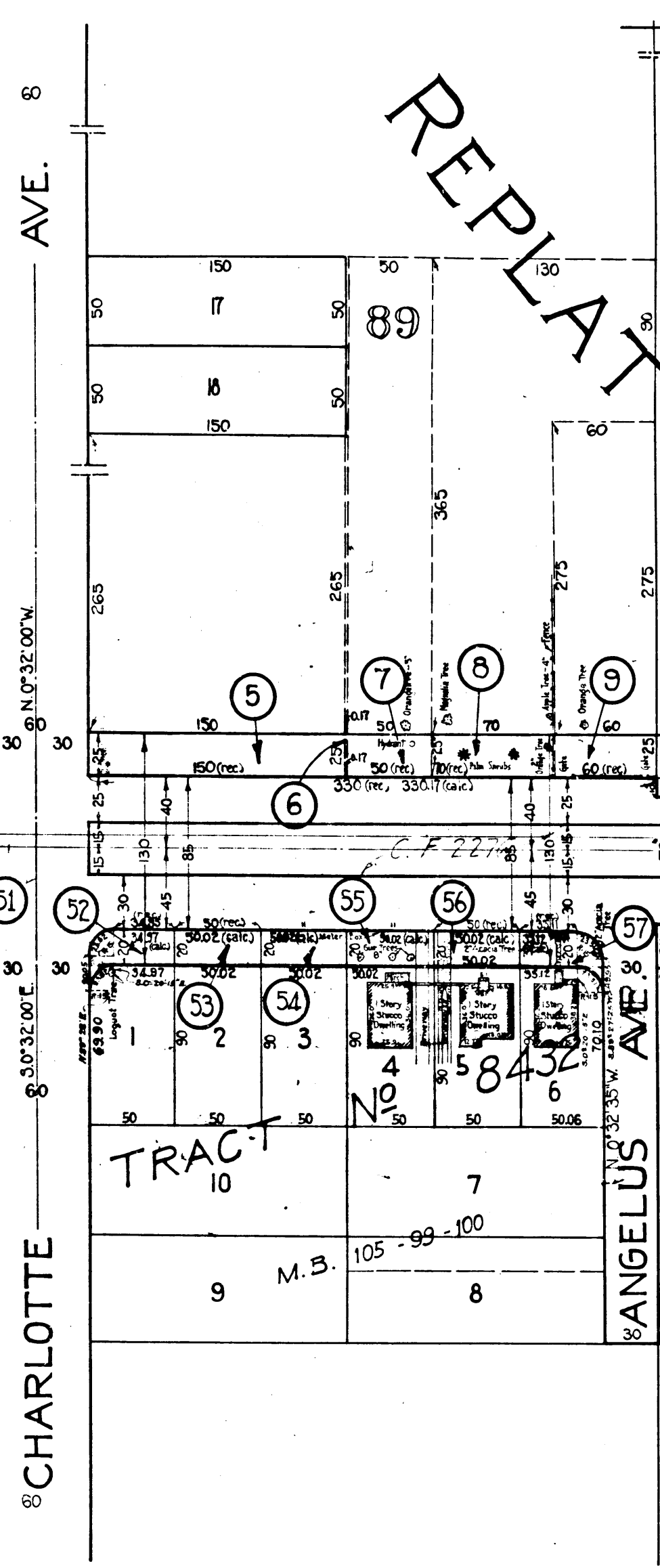
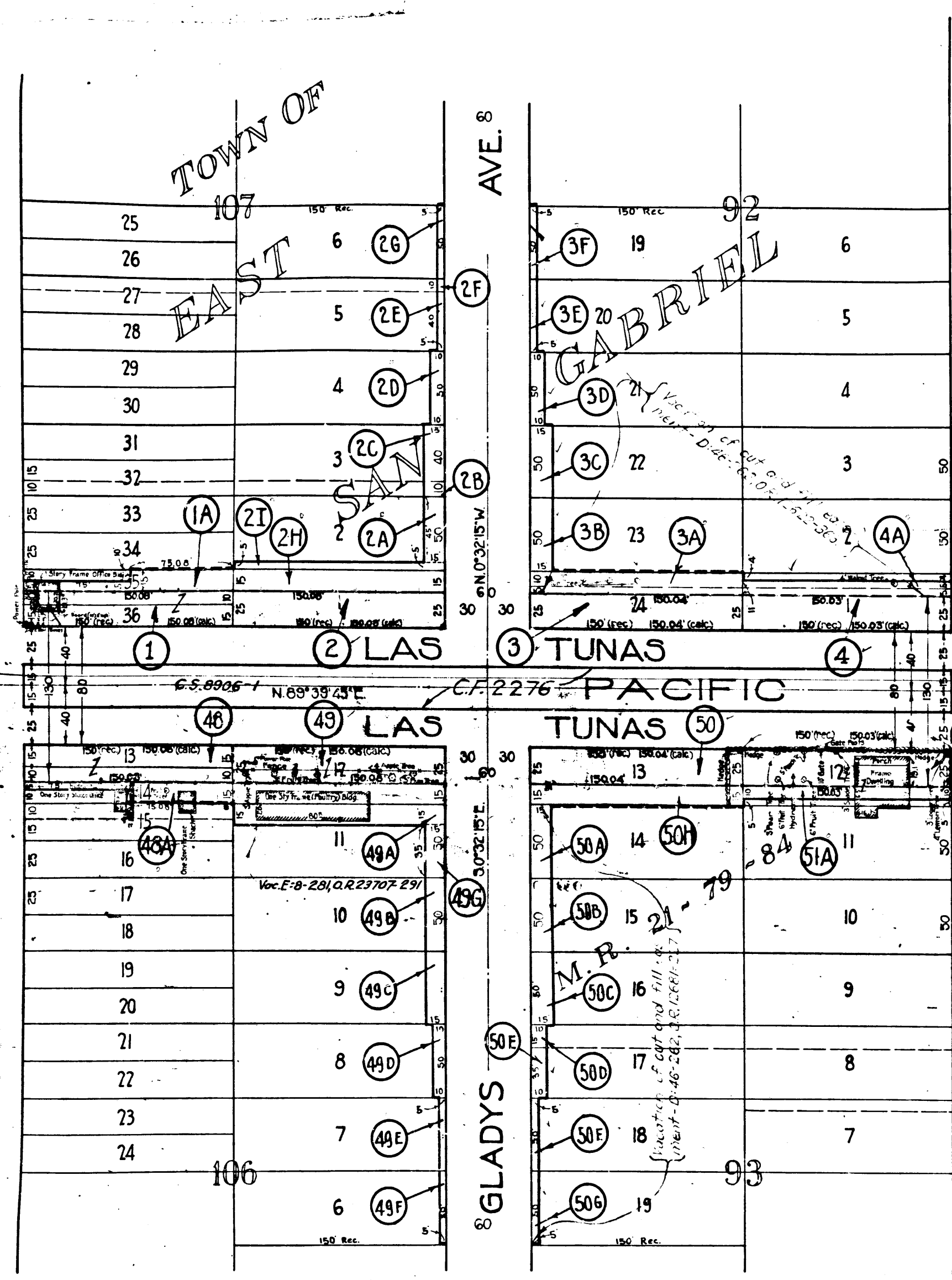


INDEX 44

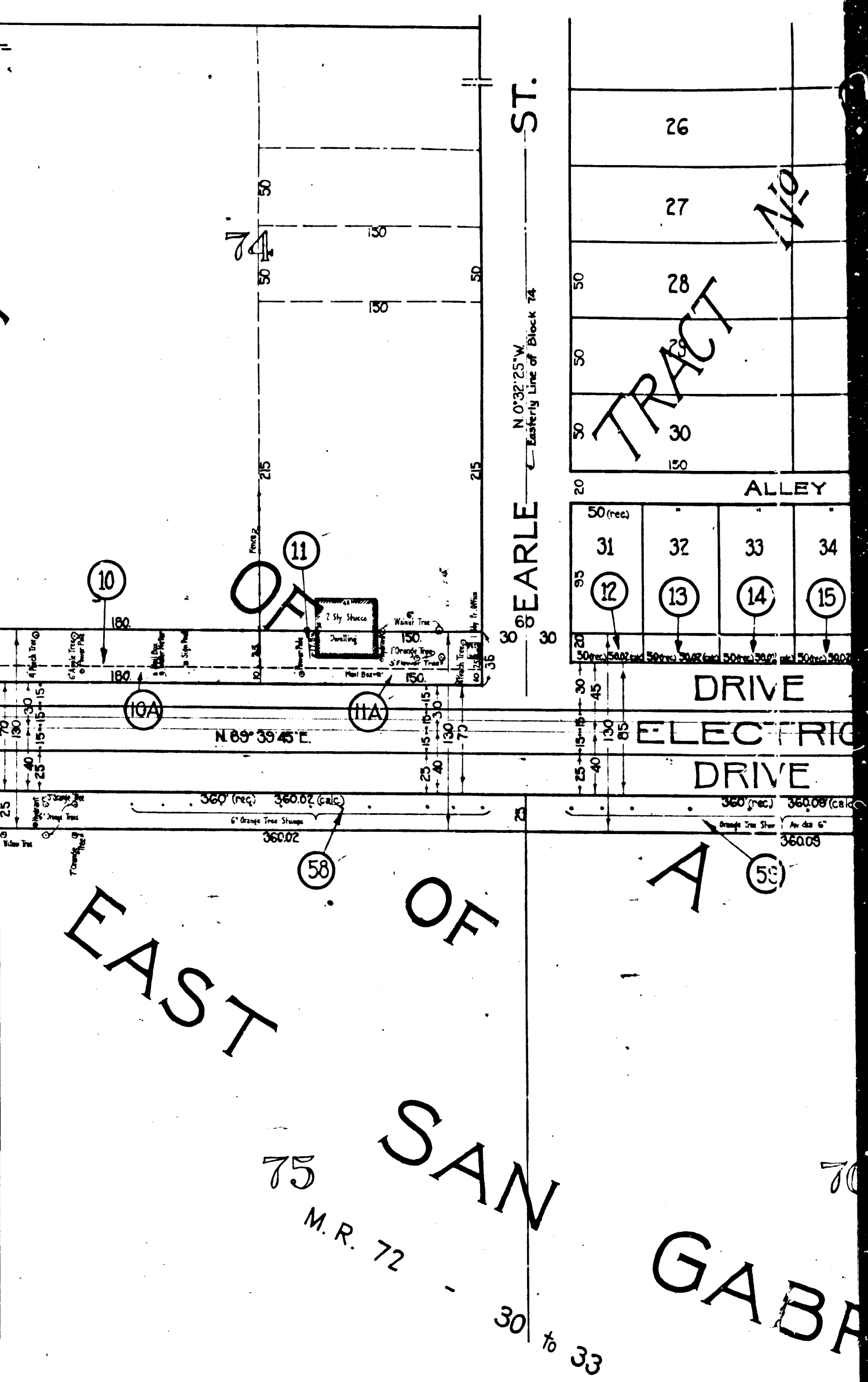


SCALE IN FEET

BLVD 8  
SAN GABRIEL

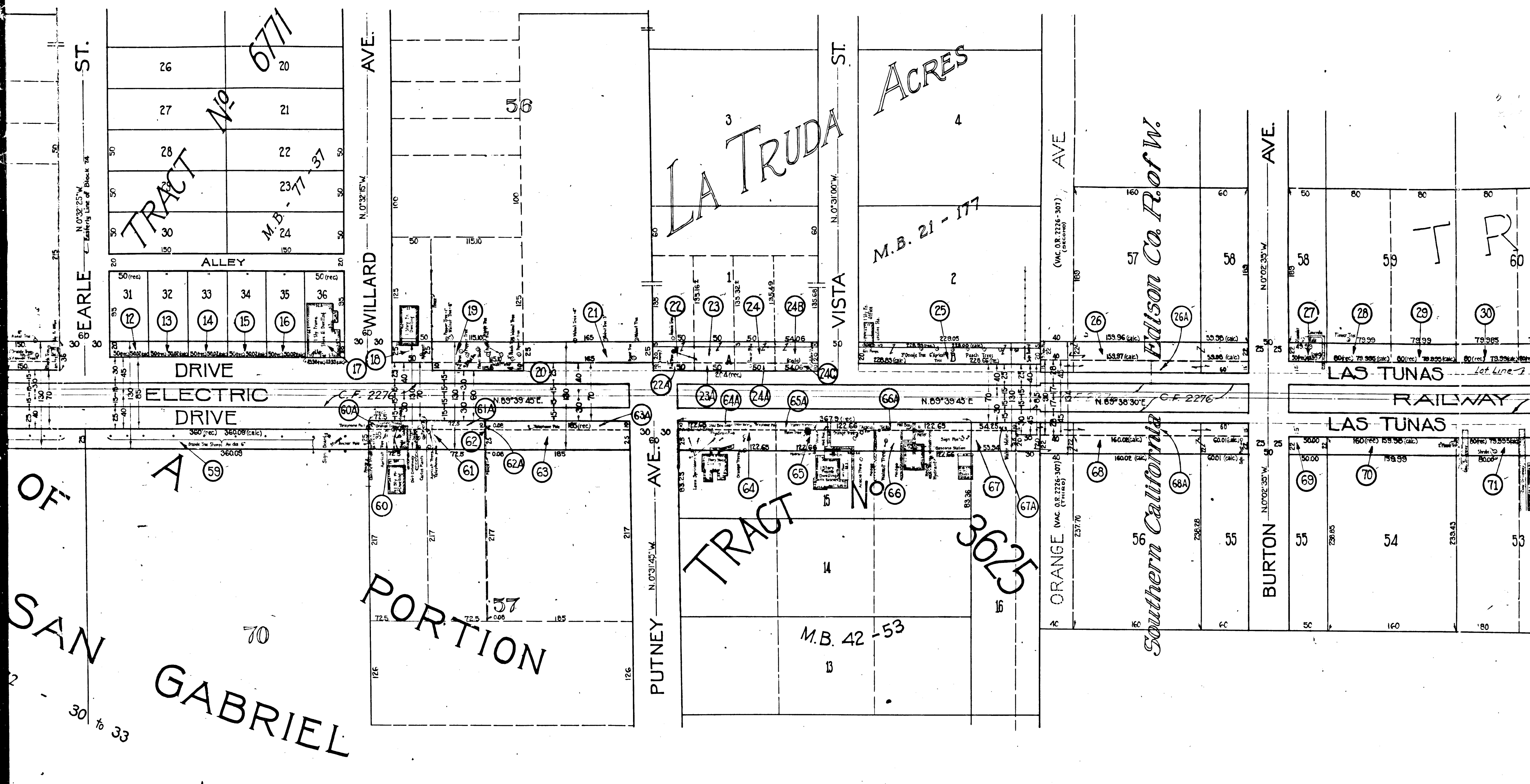


REPLAT



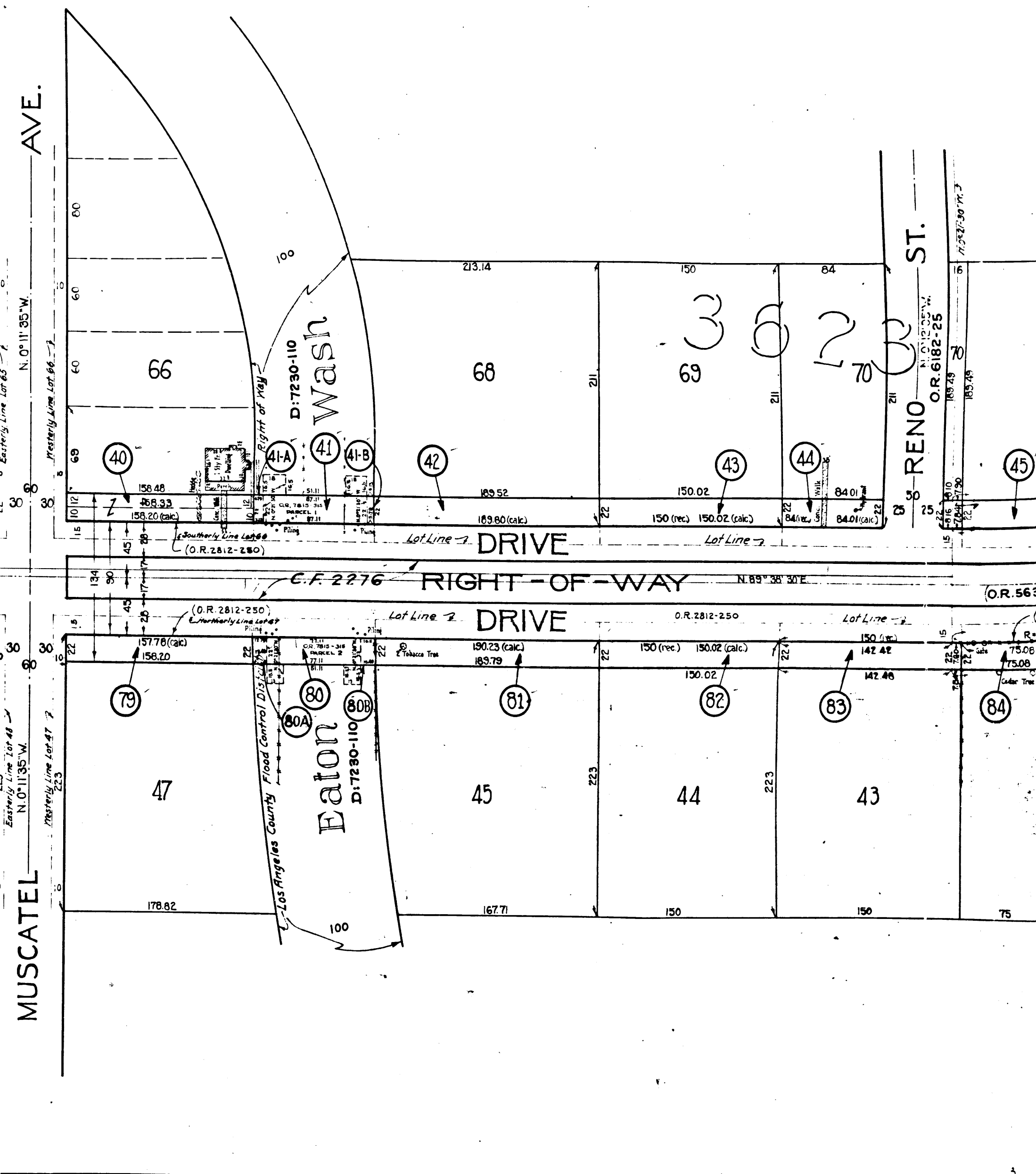
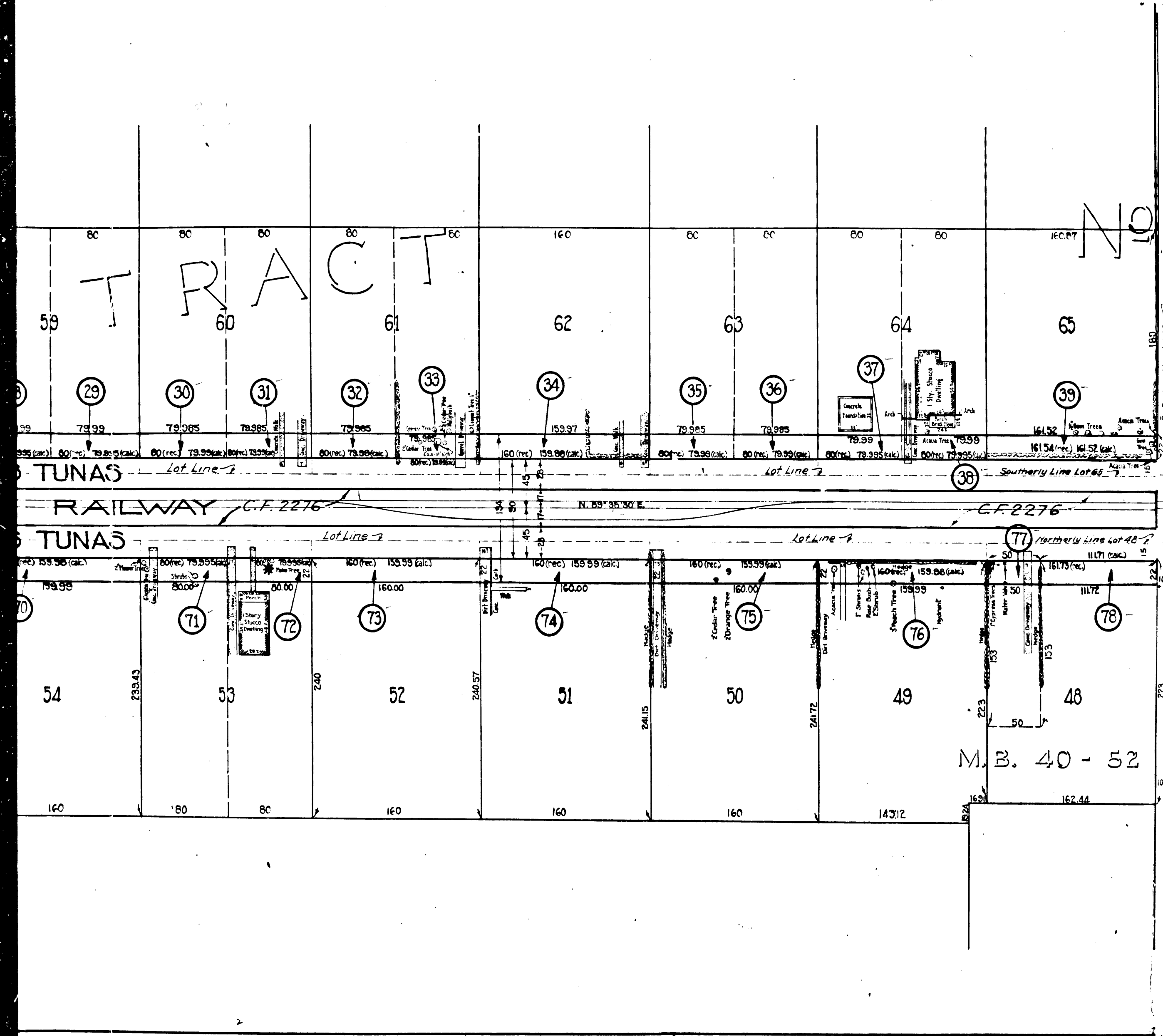
C.F. 1660-1

A1 OF A12



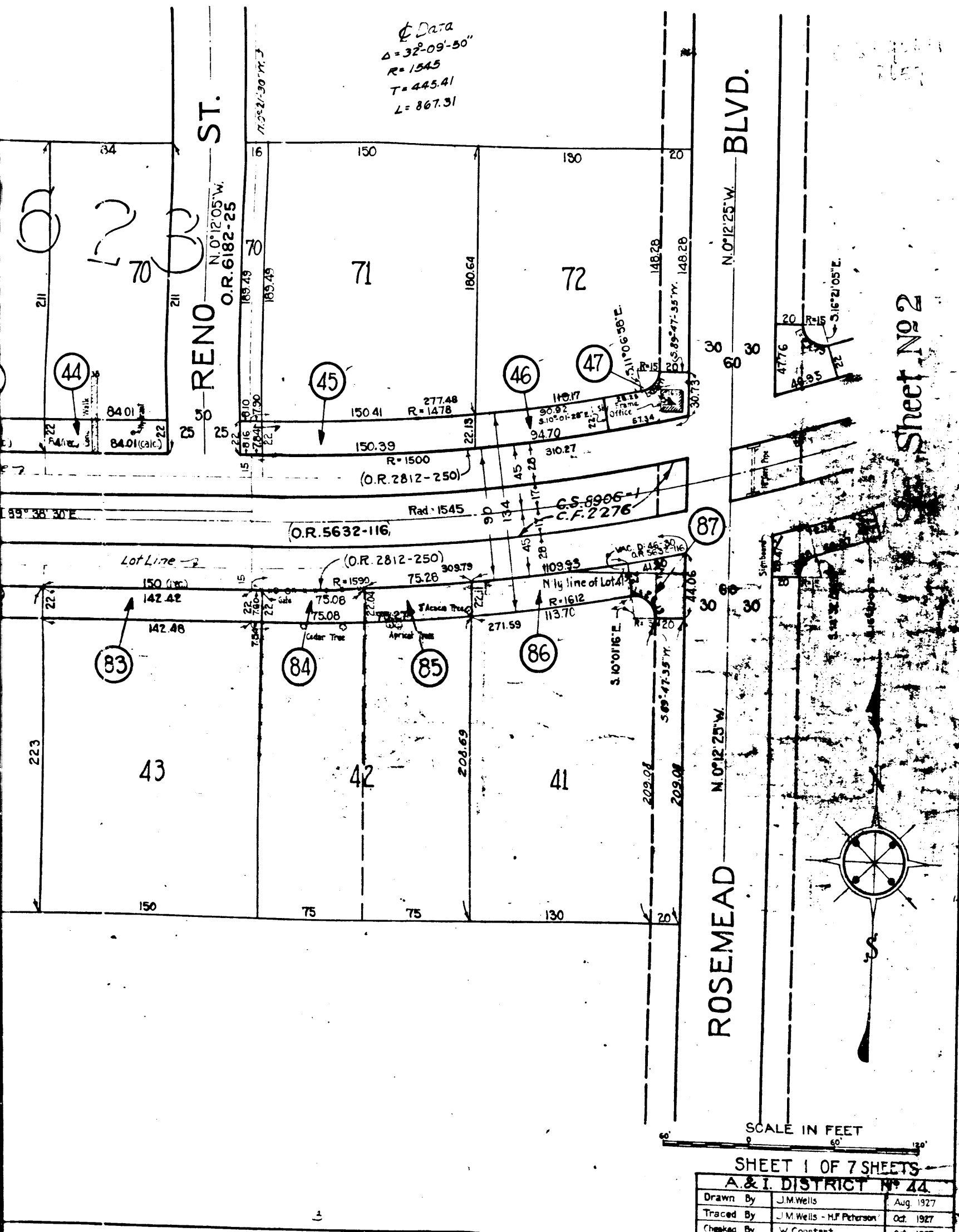
OF  
SAN  
GABRIEL

C.F. 1660-1  
A 2 OF A 12



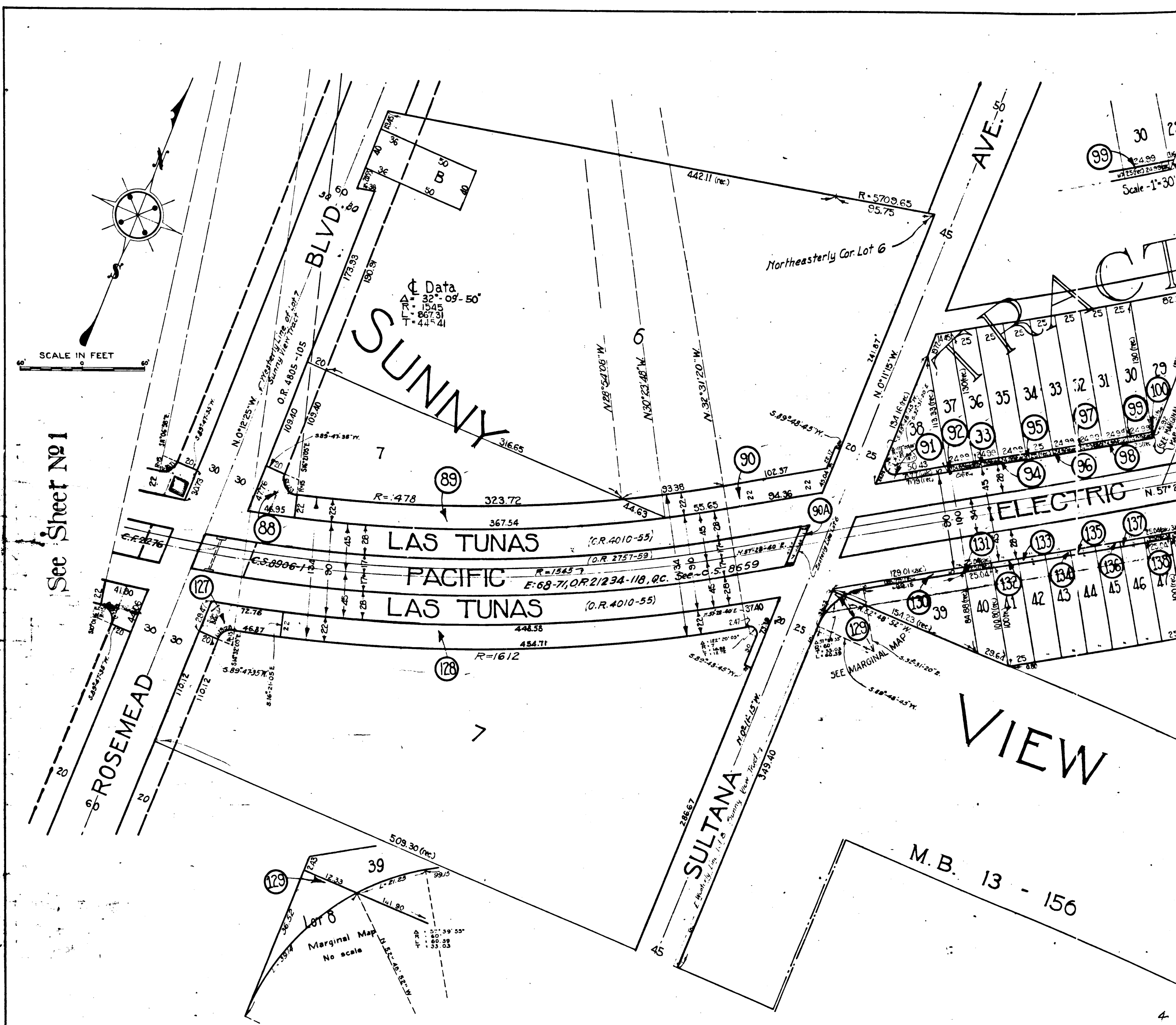
CF. 1660-1

A3 OF A12



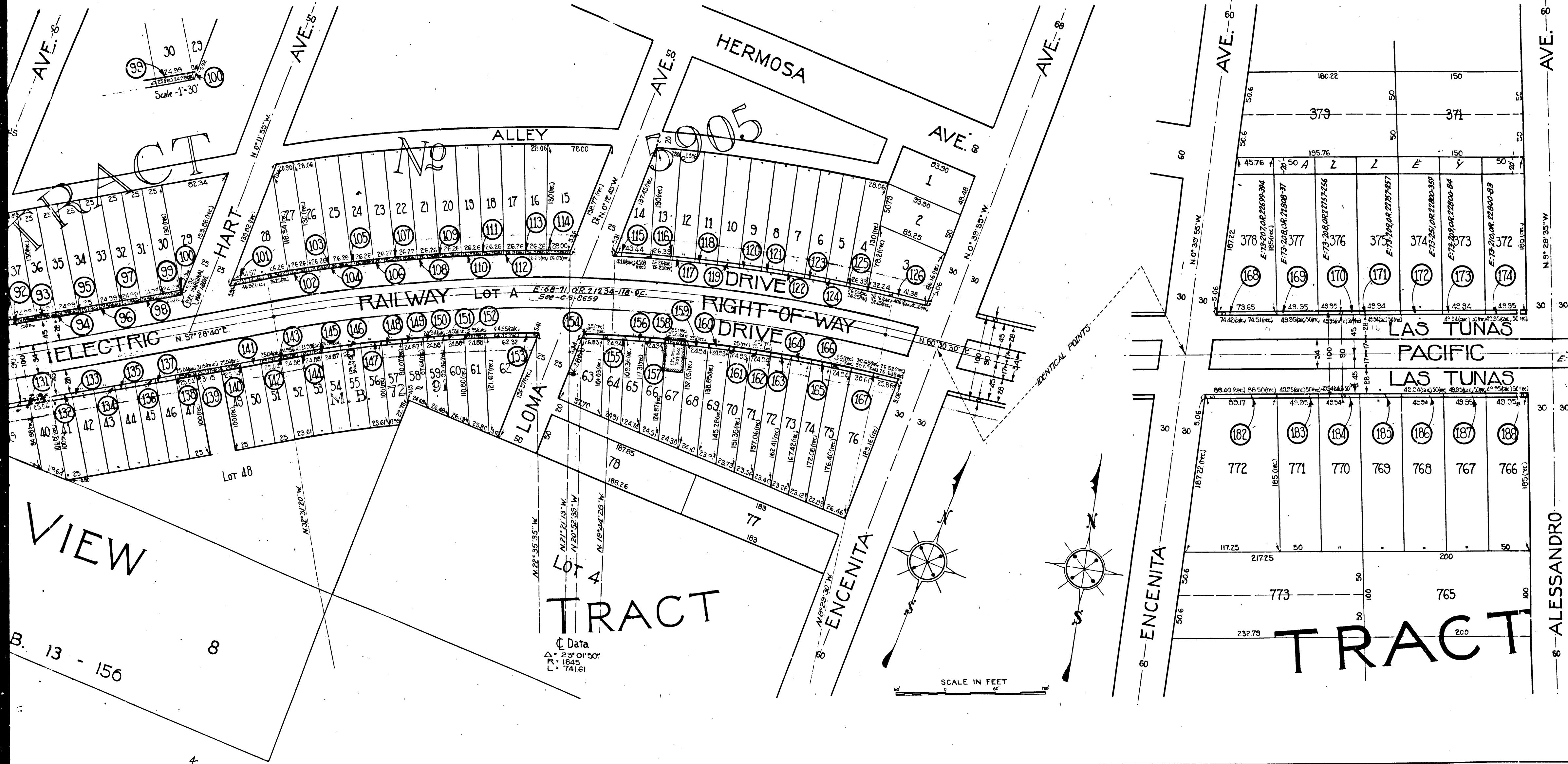
SHEET 1 OF 7 SHEETS  
 A & I DISTRICT No 44  
 Drawn By J.M. Wells Aug 1927  
 Traced By J.M. Wells - H.P. Peterson Oct 1927  
 Checked By W. Constant Oct 1927

SHEET 1 OF 7 SHEETS  
 A & I DISTRICT No 44  
 Drawn By J.M. Wells Aug 1927  
 Traced By J.M. Wells - H.P. Peterson Oct 1927  
 Checked By W. Constant Oct 1927

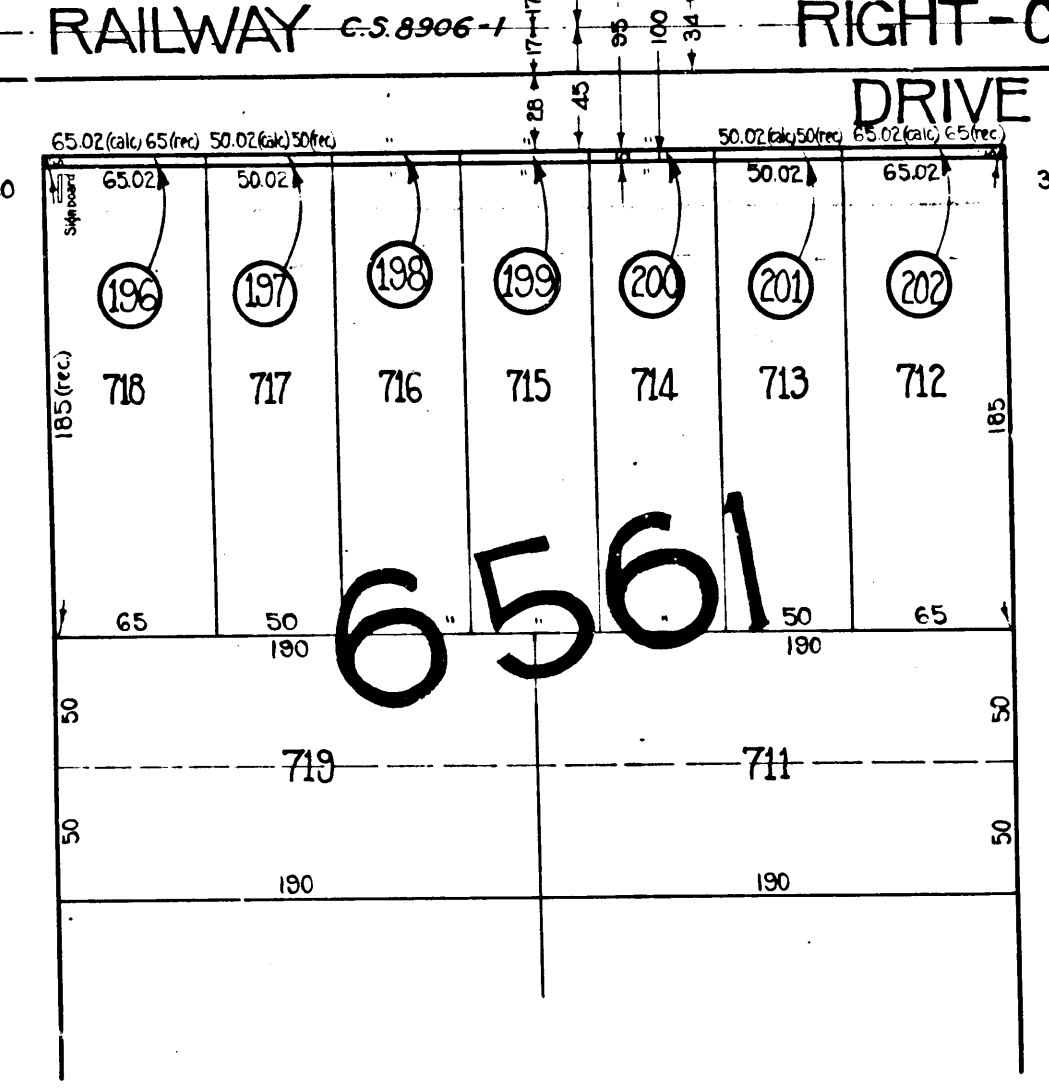
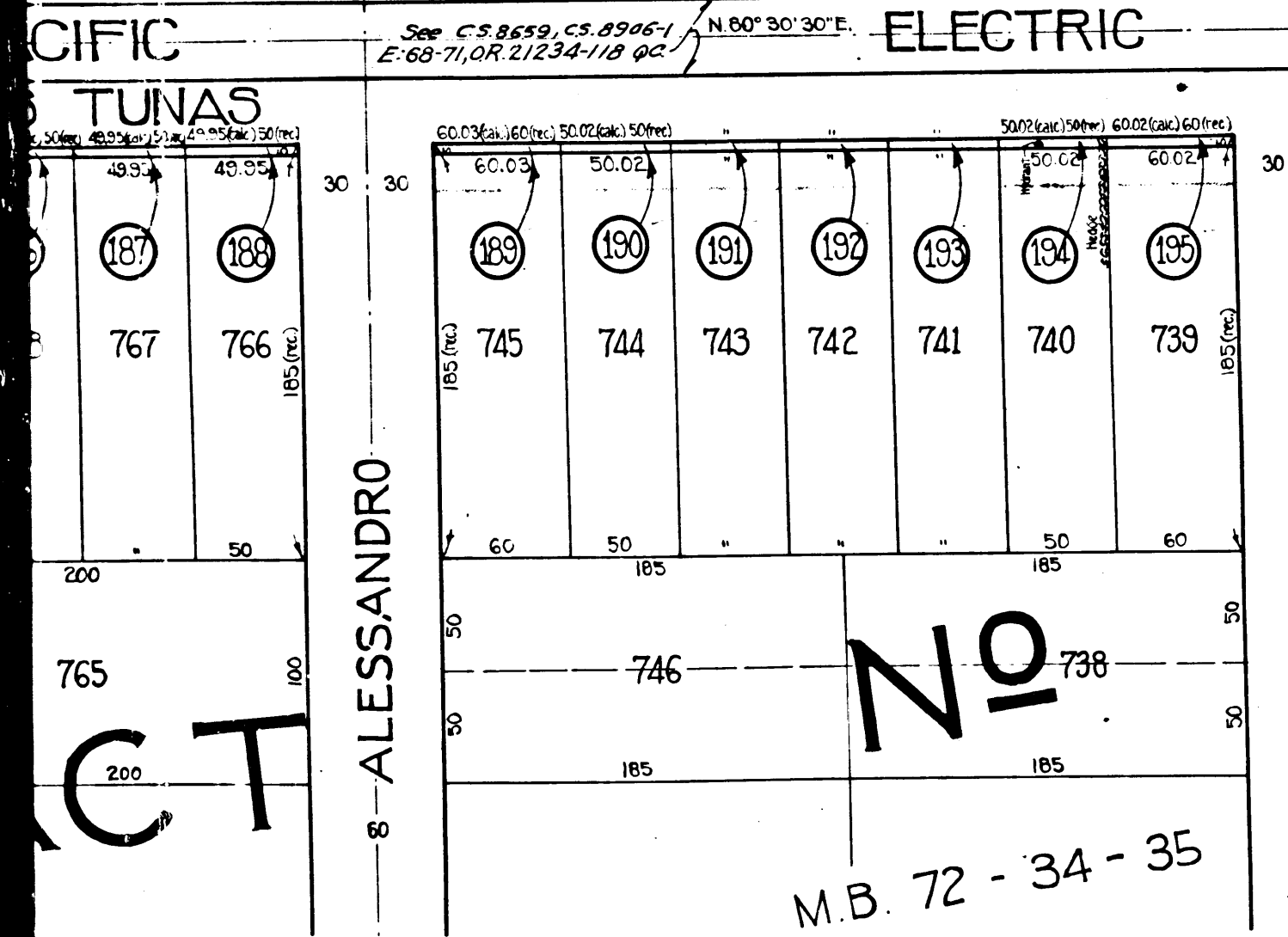
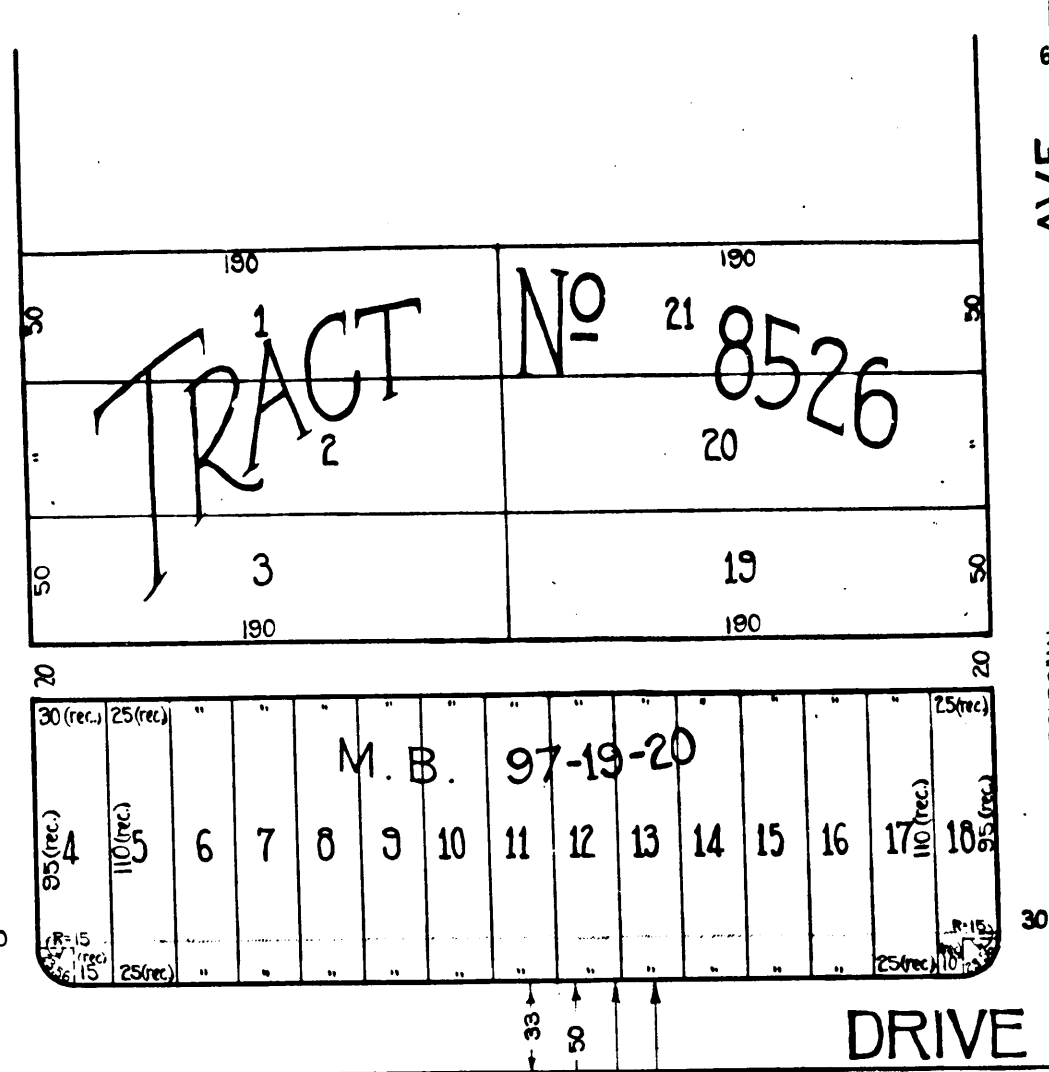
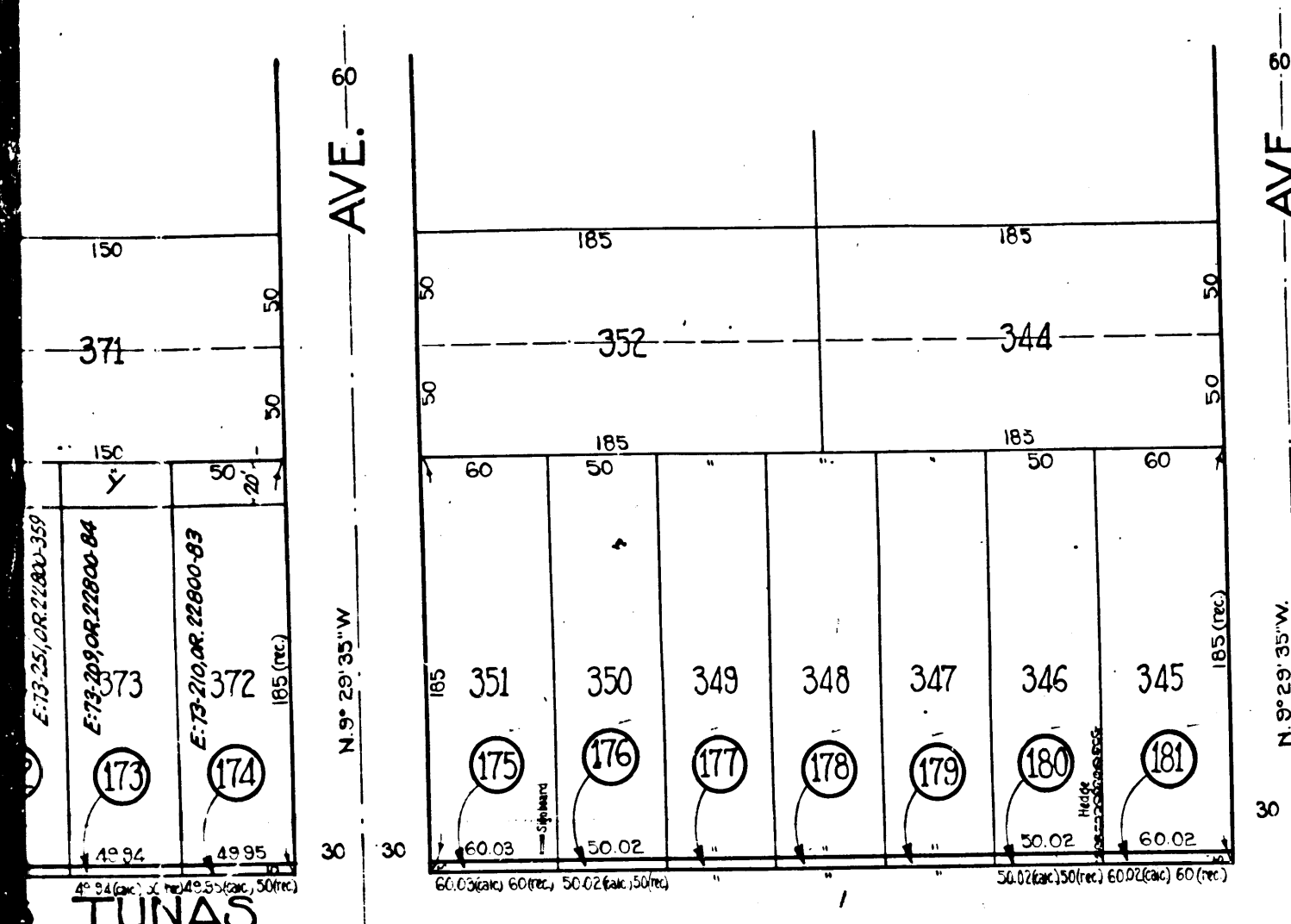


C.F. 1660-1  
 A 4 OF A 12



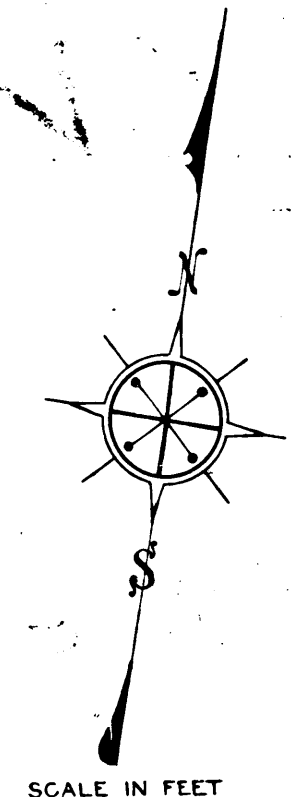


C.F. 1660-1  
 A5 OF A12



INDEX 44

See Sheet No 3



SCALE IN FEET

SHEET 2 OF 7 SHEETS  
A&I DISTRICT No 44

Drawn By	J. M. Wells	Aug 1927
Traced By	J. M. Wells - H. F. Peterson	Aug 1927
Checked By	W. Constant	Oct 1927

A&I DISTRICT No 44

A&I DISTRICT No 44

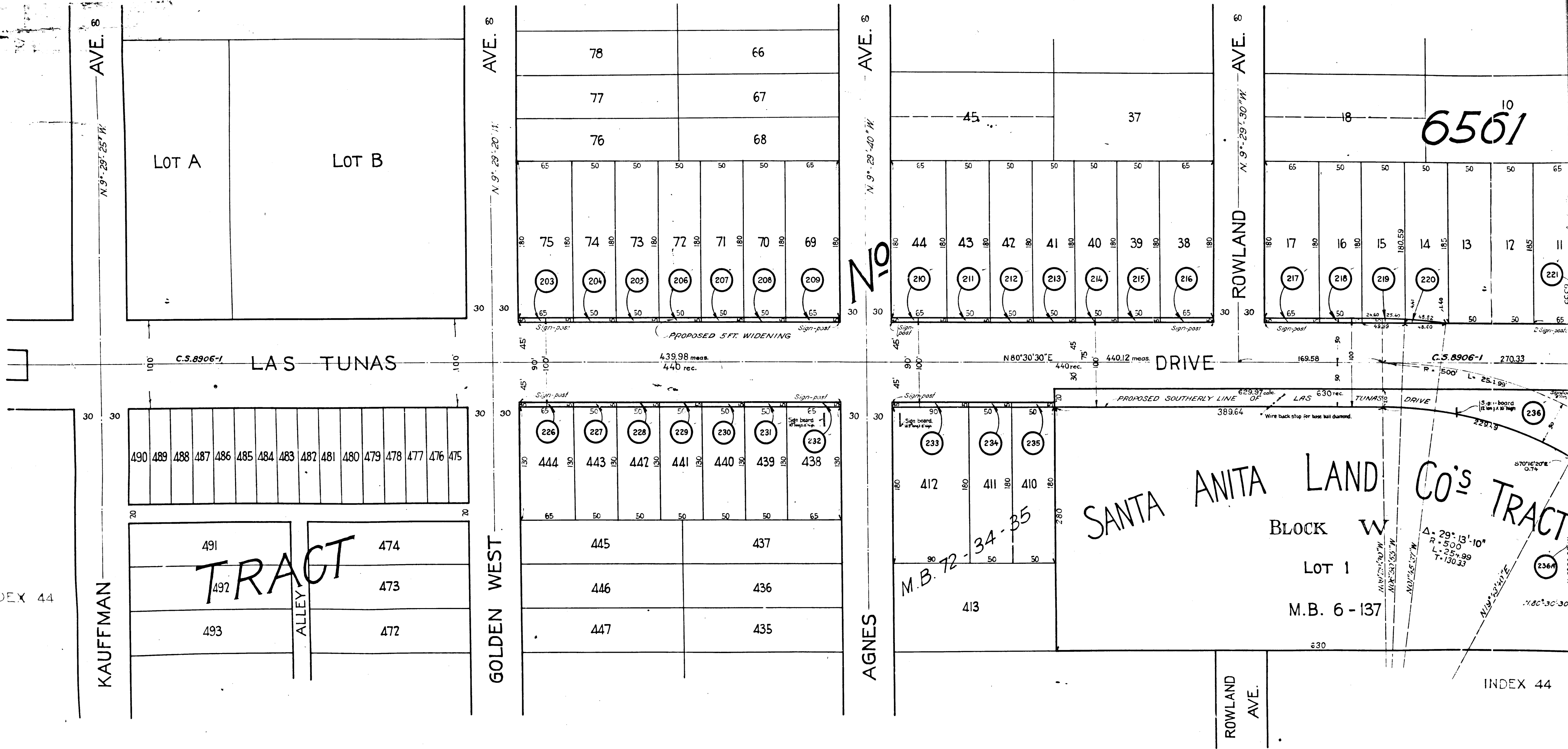
Superior Court Case No. 269622  
 Suit for Condemnation  
 Filed Jan. 16<sup>th</sup> 1929  
 County of Los Angeles, Pltff.  
 Vs  
 Thomas R. Abernethy, et al, Def.  
 Interlocutory judgment as per  
 map, rendered Mar. 24<sup>th</sup> 1931.  
 Judg. Bk. 774-266  
 Interlocutory judgment amended  
 nunc pro tunc as to parcels 285  
 to 289, June 1, 1931. Judg. Bk. 777-193.  
 Final judgment in favor of Pltff.  
 as per map, rendered June 2, 1933.  
 D:92-137 O.R. 12289-277

CF. 1660-1  
 A 6 OF A 12

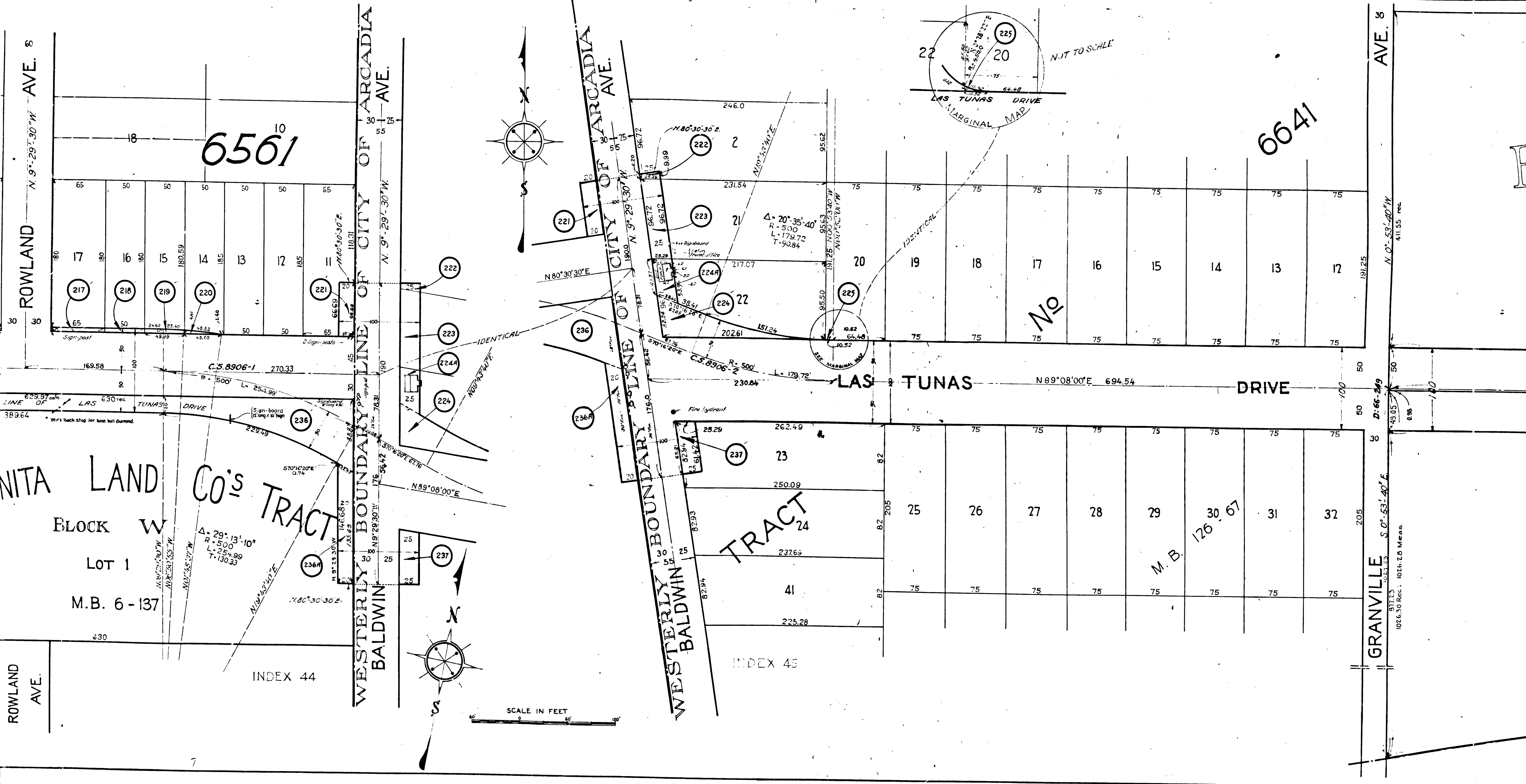
CF. 1660-1  
 A 7 OF A 12

See Sheet No 2

INDEX 44



INDEX 44





CF. 1660-1  
A9 OF A12

E. J. BALDWIN'S  
18

ADDITION

No 1

19

*Cultivated*

TO

(PROPOSED) LAS TUNAS DRIVE

26

SANTA

25

ANITA

24

COLONY

23

*Cultivated*

M.R. 52 - 60 LINE

SOUTHERLY BOUNDARY

CITY OF ARCADIA

1076.30 Rec. 1026.20 Meas.

1074 rec.

1064 rec.

AVE. 60

411.16 rec.

N 0° 55' 05" W

411.79 rec.

1074.62 calc.

1063.81 calc.

238

241

239

240

242

552.29 calc.

522.29 calc.

516.90 calc.

546.91

869.36

805.62 Calc.

715.13

500° 54' 15" E

HOLLY 850.8 rec.

N 00° 55' 06" W

559.42 calc.

N 80° 35' 15" E

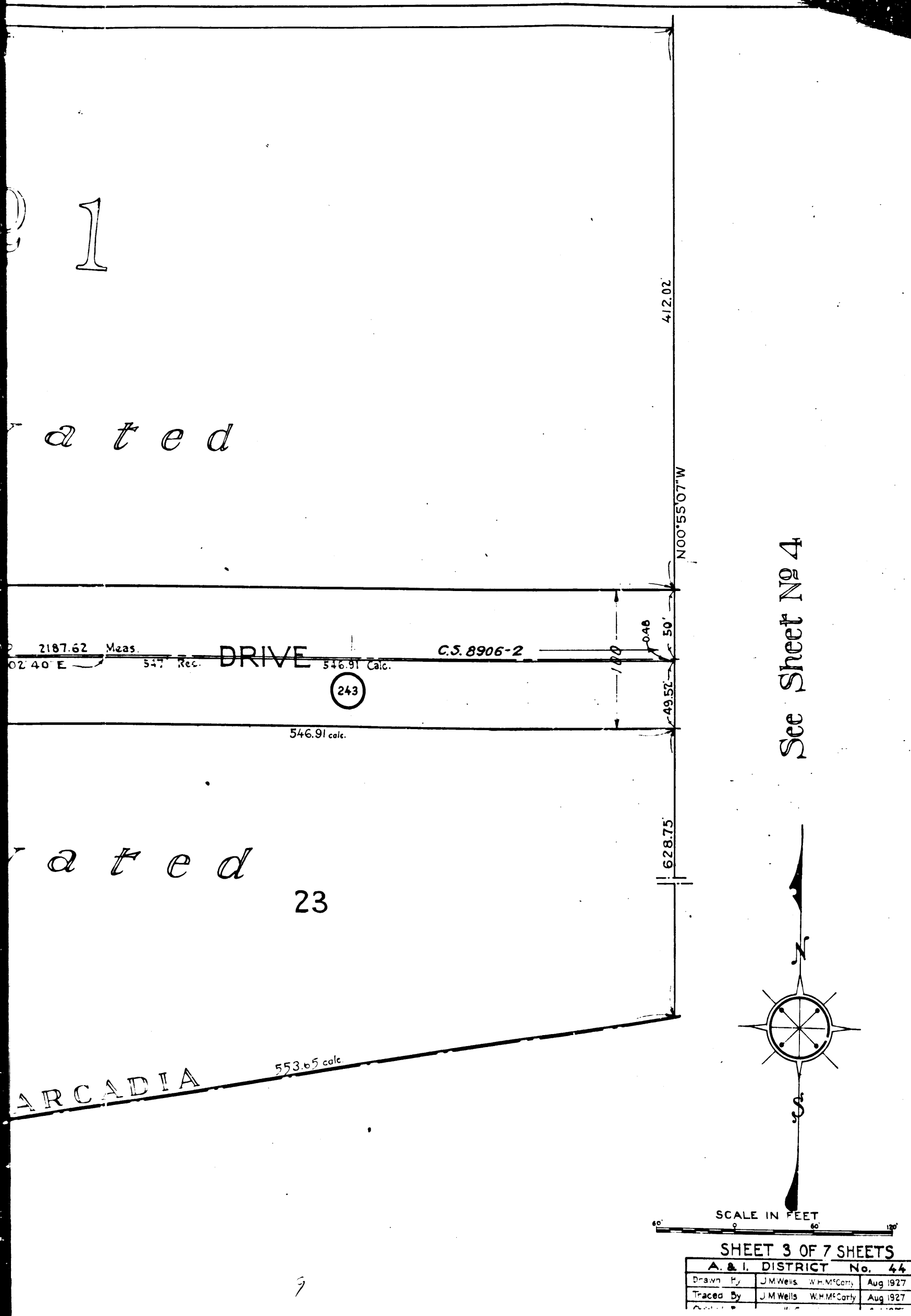
529.04 calc.

523.27 calc.

N 80° 45' 15" E

553.65

CF. 1660-1  
 A10 OF A12



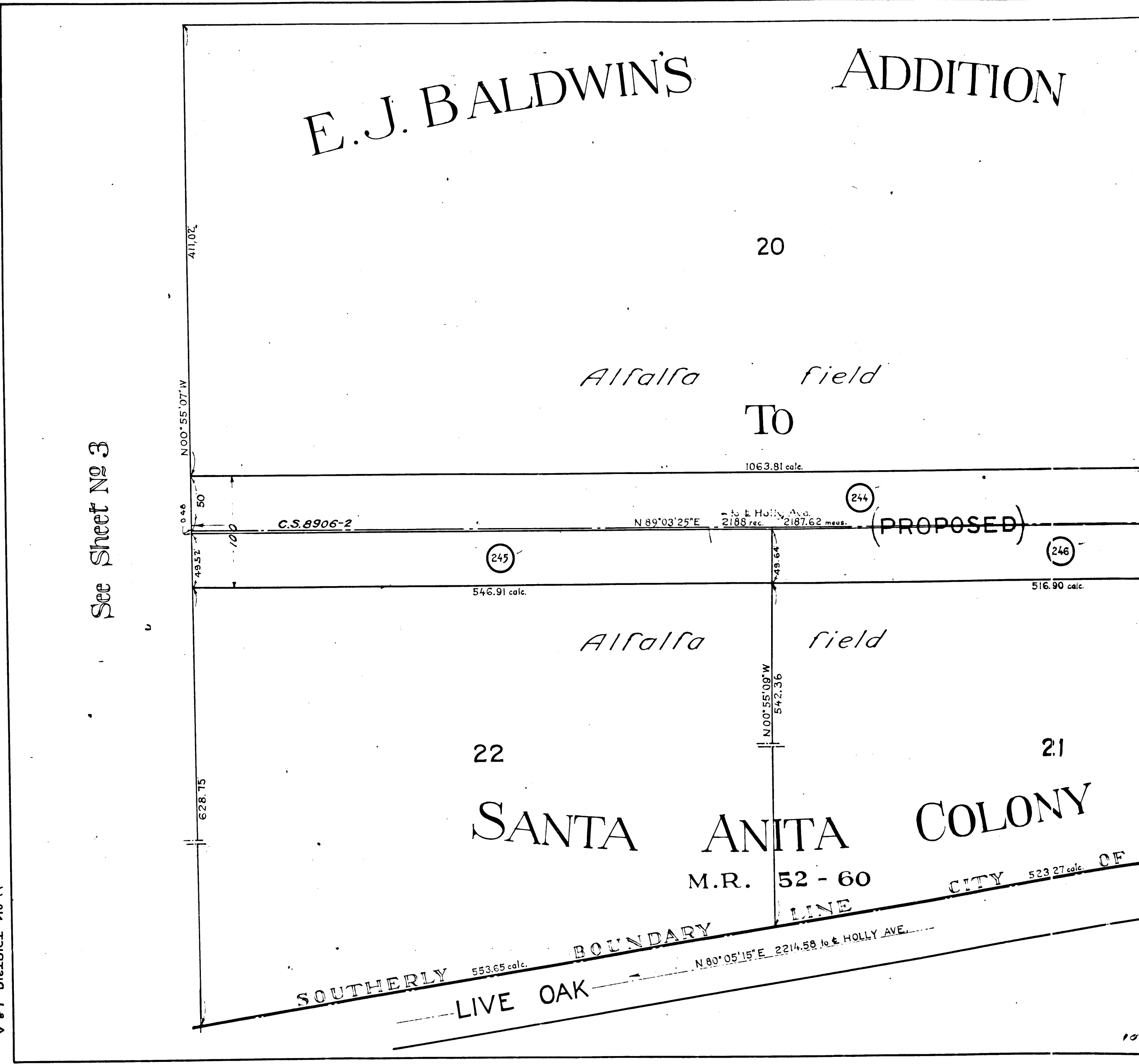
COND E M N I O N  
 A & I D I S T R I C T N O . 4 4  
 L I V E O A K D R I V E  
 S H E E T 3 O F 7 S H E E T S

COND E M N I O N  
 A & I D I S T R I C T N O . 4 4  
 L I V E O A K D R I V E  
 S H E E T 3 O F 7 S H E E T S

SCALE IN FEET  
 SHEET 3 OF 7 SHEETS  
 A & I DISTRICT No. 44  
 Drawn by J.M. Wells, W.M.M. Carly, Aug 1927  
 Traced by J.M. Wells, W.M.M. Carly, Aug 1927

SHEET 3 OF 7 SHEETS  
 COND E M N I O N  
 A & I D I S T R I C T N O . 4 4  
 L I V E O A K D R I V E  
 S H E E T 3 O F 7 S H E E T S

SHEET 3 OF 7 SHEETS  
 COND E M N I O N  
 A & I D I S T R I C T N O . 4 4  
 L I V E O A K D R I V E  
 S H E E T 3 O F 7 S H E E T S



See Sheet No 3

See Sheet No 4

SOUTHERLY BOUNDARY  
 LIVE OAK

M.R. 52 - 60

SANTA ANITA COLONY

LIVE OAK

CF. 1660-1

A 11 OF A 12

ADDITION

No 1

AVE.

67

Truck garden

See C.S. B-1784 Sht 2

TOR. CERT. No 2834

ANITA

Truck garden

(PROPOSED)

246

516.90 calc.

247

248

LAS TUNAS

250

249

N 89° 03' 25" E 1125  
N 89° 02' 40" E 1127.24 meas.

Cultivated land

251

DRIVE.

Truck garden

SANTA

68

Truck garden

MR. 42-87

21

COLONY

EL MONTE

CITY OF ARCADIA

AVE.

AVE.

BOUNDARY

CITY OF

SOUTHERLY

LIVE OAK

253

254

C.S. 8306-2

N 80° 05' 15" E 2254.39 calc.

412.25

412.26

N 00° 55' 10" W

460.65 calc. 462.14 calc.

N 00° 55' 35" W

50

25

N 80° 05' 15" E 1141.31 calc. 2254.39 calc.

1110.93 calc. 333.39

1110.93 calc. 333.39

777.54

1110.93 calc.

1110.93 calc.

1141.31 calc.

N 00° 55' 35" W 412.5

N 00° 55' 35" W 279.79 calc.

N 00° 55' 35" W 500.56 calc. 279.79 calc.

N 00° 55' 35" W 500.56 calc. 279.79 calc.

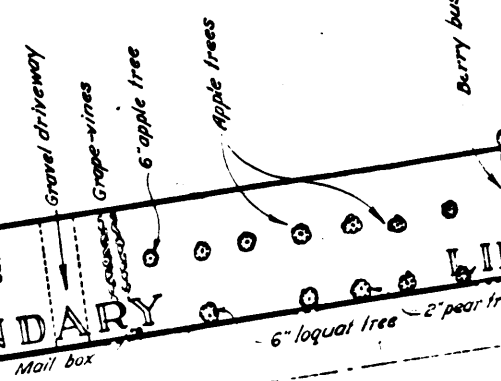
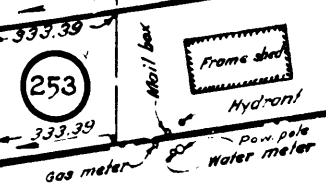
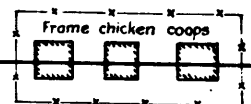
134.38

268.08

109.96

379.66

481.07



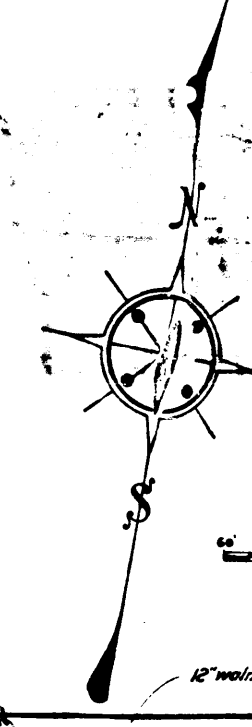
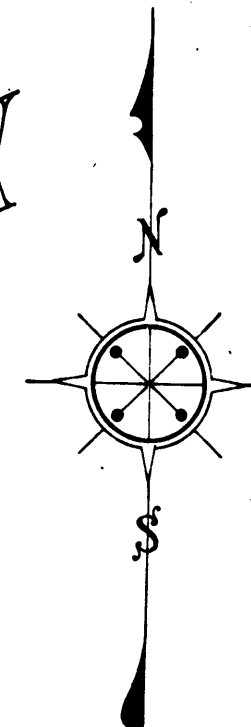
COLONY

ARCADIA ACREAGE TRACT

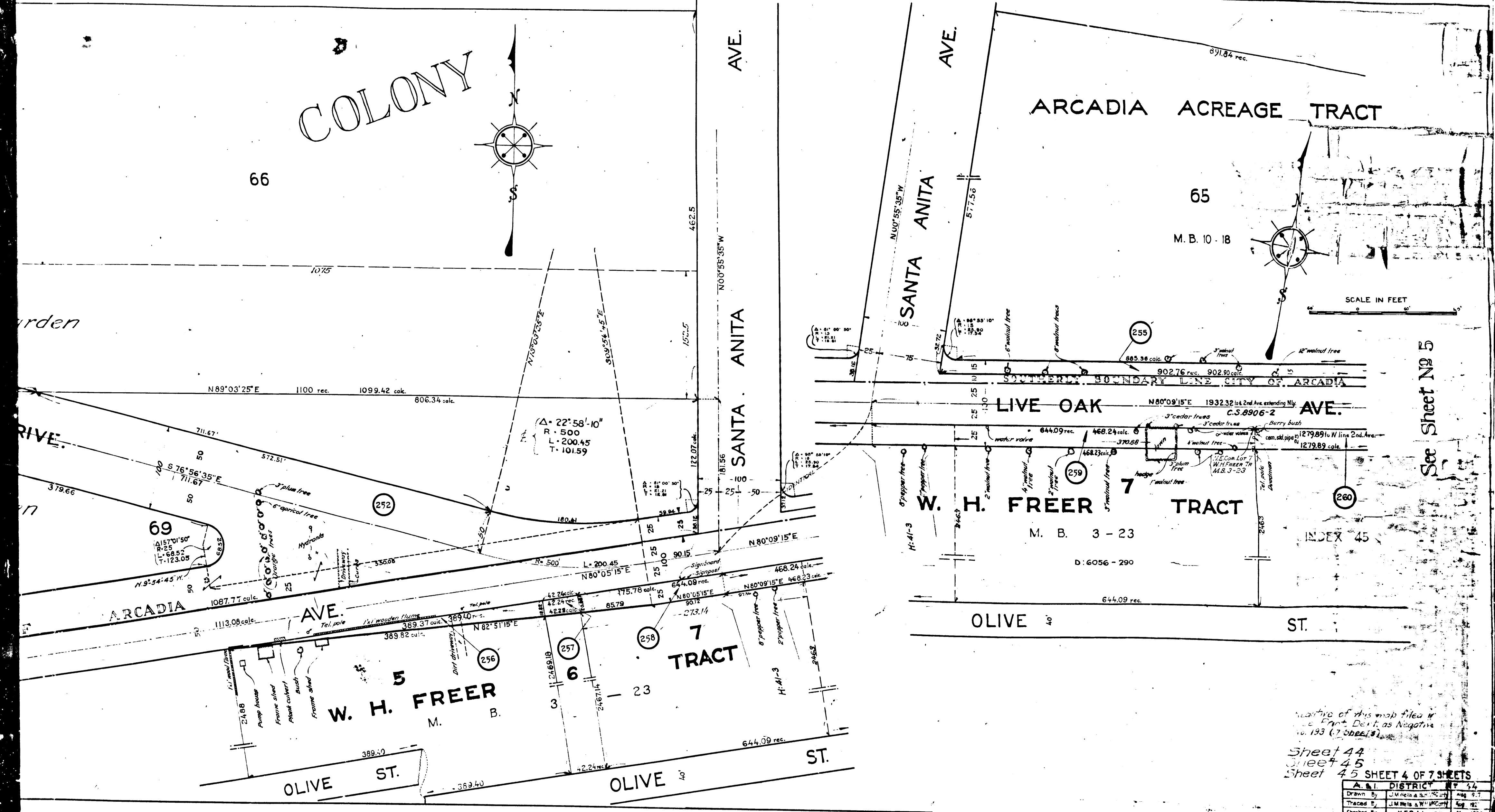
66

65

M. B. 10 - 18



SCALE IN FEET



See Sheet No 5

INDEX 45

negative of this map filed in  
 the Court Clerk's Office as Negative  
 No. 193 (7 sheets)

Sheet 44  
 Sheet 45  
 Sheet 45 SHEET 4 OF 7 SHEETS

A. S. L. DISTRICT # 24		
Drawn By	J. M. Wells & W. H. McCarty	Aug. 9, 1913
Traced By	J. M. Wells & W. H. McCarty	Aug. 1913
Checked By	H. F. Baker	Aug. 1913