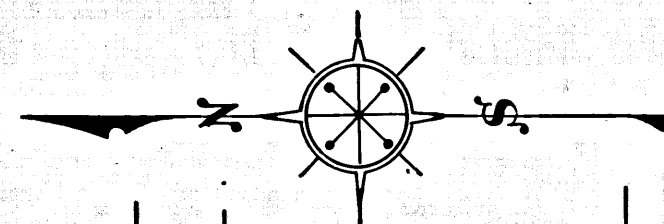
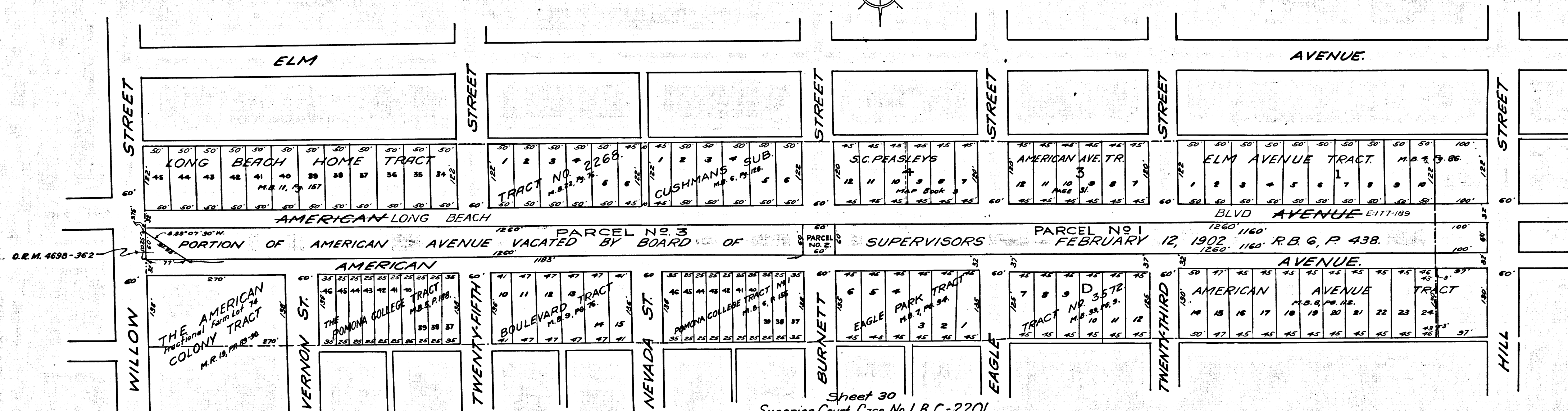


Land to be taken shown red.



Scale:- 1 inch = 100 feet.



Sheet 30
 Superior Court Case No. L.B. G.-2201.
 Suit for Condemnation -
 Filed Dec. 17th 1928
 City of Long Beach, - Pltff.
 Vs.
 Clark D. Hall, et al. Def.
 Interlocutory judgment as per
 map, rendered Dec. 16th 1930.
 Judg. Bk. 769-99.
 Interlocutory judgment amended
 Feb. 20, 1931.
 Interlocutory judgment as amended
 reversed by District Court of Appeal.
 New interlocutory judgment as
 per map, rendered Apr. 16, 1934.
 Judg. Bk. 883-13.
 Final judgment in favor of Pltff. as per
 map rendered Feb. 15, 1938
 E: 23-58, O.R. 15617-93

C.F. 1661 -