

Sh. 47

Superior Court Case No. 26987

Suit for Condemnation

Filed Jan 18, '29

County of Los Angeles, Plaintiff

vs.

George W. Aschenbrenner et al.,

Interlocutory judgment as per

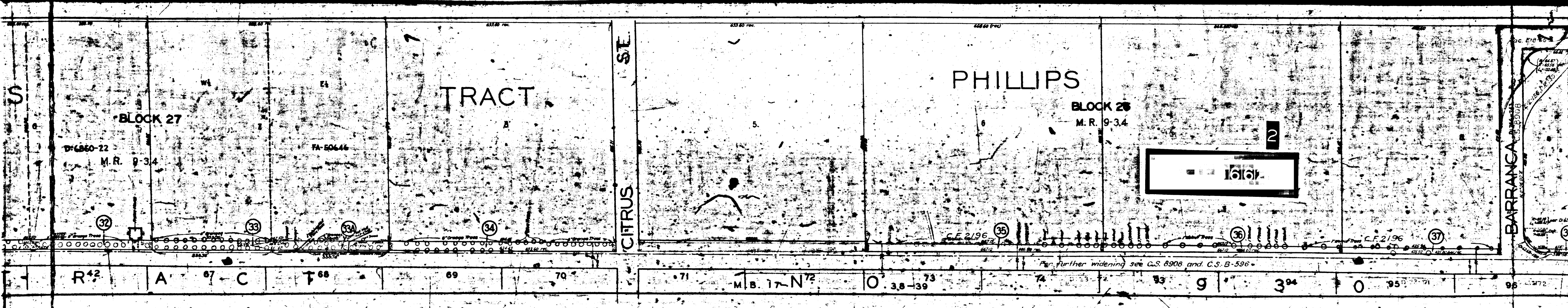
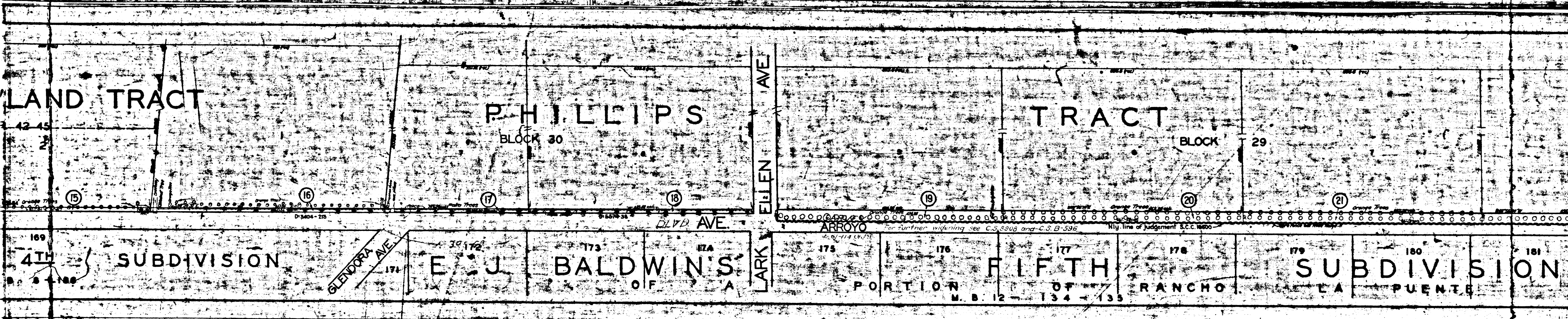
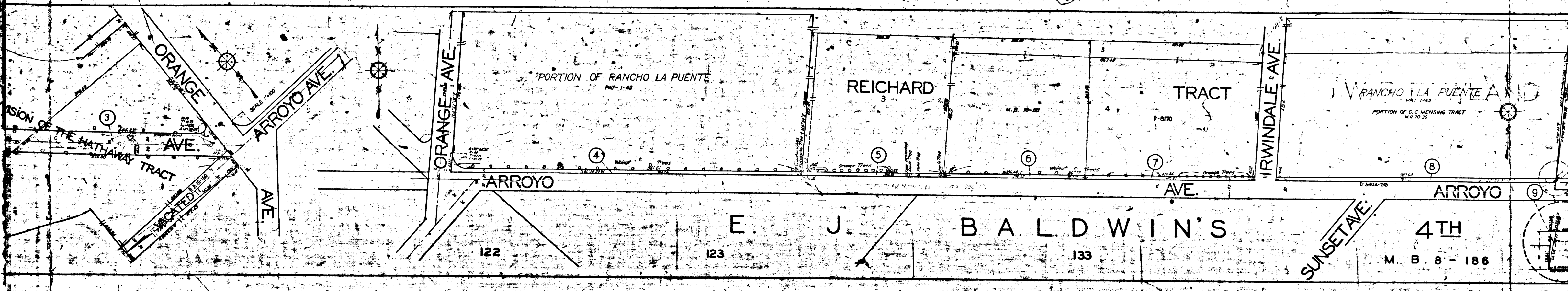
map, rendered Jan 22, 1930

Judg. Bk. 744-231.

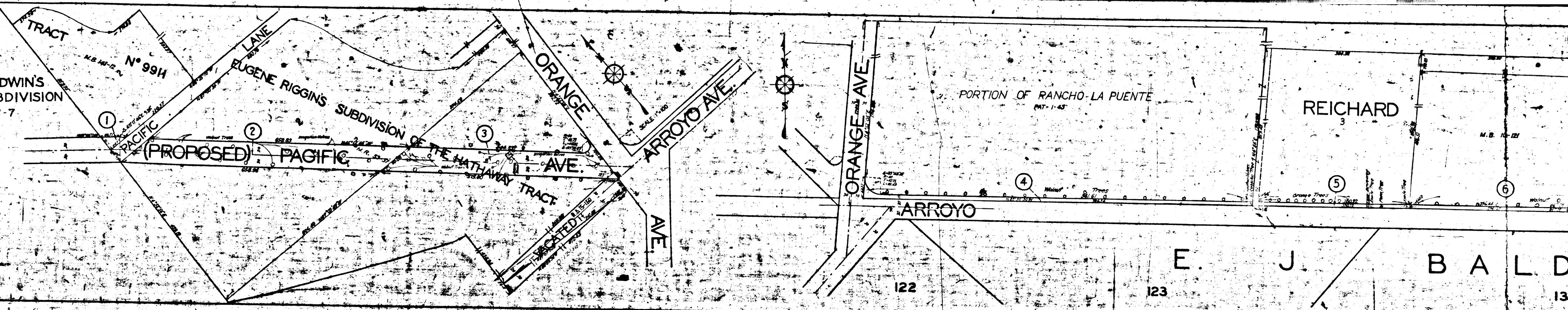
Final judgment in favor of Plaintiff

as per map rendered Dec. 14, 1930

D-81-176, O.R. 100-43291



86
E. J. BALDWIN'S
SUBDIVISION
M.B. 7-7



W. R. ROWLAND TRACT

PHILLIPS

E. J. BALDWIN'S 4TH SUBDIVISION

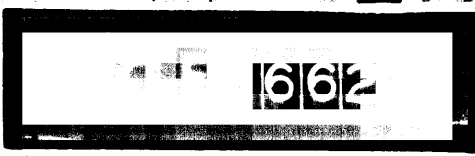
E. J. BALDWIN'S OF A PORTION OF FIFTH

PHILLIPS

TRACT

PHILLIPS

OR 2054-100 OR 7114-244 OR 7875-376 D 6850-22 FA 50646



ARROYO GARVEY

T R A C T

M.B. 17-N72

O. 38-39

SEE SHEET NO. 1

SEE SHEET NO. 2

For further info