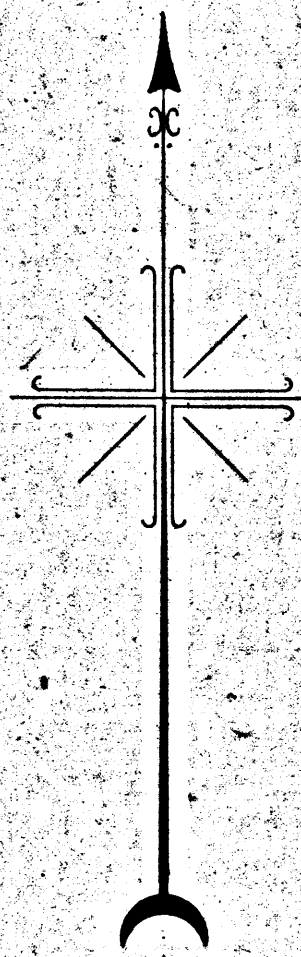


MAP
 SHOWING THE LAND TO BE CONDEMNED
 FOR THE
 OPENING AND LAYING OUT
 OF
SECOND AVENUE
 ACROSS THE RIGHT OF WAY OF THE
 LOS ANGELES RAILWAY CORPORATION
 BETWEEN THE
 NORTHERLY AND SOUTHERLY ROADWAYS
 OF
SANTA BARBARA AVENUE
 IN THE
 CITY OF LOS ANGELES, CALIFORNIA

in accordance with Ordinance No.
 John G. Shaw City Engineer
 July 1928 Scale 1"=50'
 Sht. 24

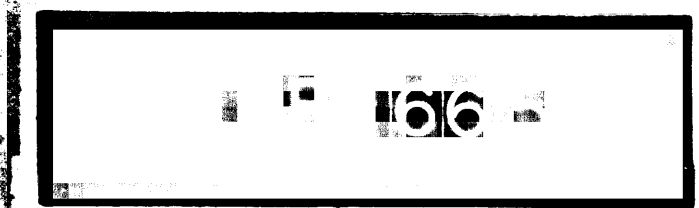
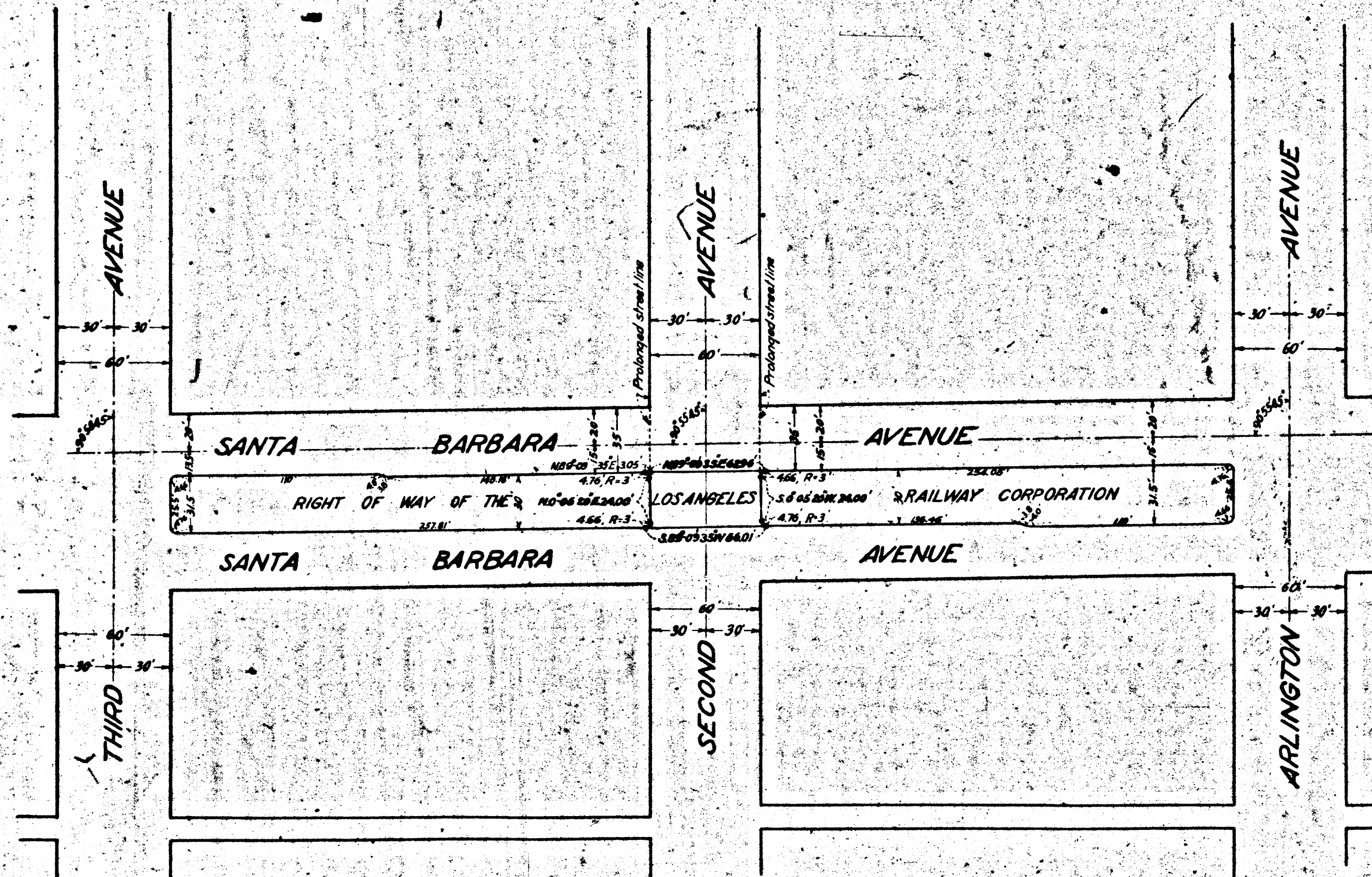
Note: The bearing, N. 89° 09' 35" E. of
 Santa Barbara Avenue as per Ordinance No. 59689 of
 the City of Los Angeles was taken as the basis of
 bearings shown on this map.
 Land to be condemned shown colored red.

78745



Superior Court Case No. 268765
 Suit for Condemnation
 Filed Jan. 3rd 1929
 City of Los Angeles, Plaintiff
 Vs
 L. A. Railway Corp. et al., Def.
 Interlocutory judgment as per
 map, rendered July 9th 1929.
 Judg. Bk. 712-374.
 Final judgment in favor of Pltff. as
 per map, rendered March 4, 1930.

D:79-76, 3dgt. Book 745-359.



A-5307