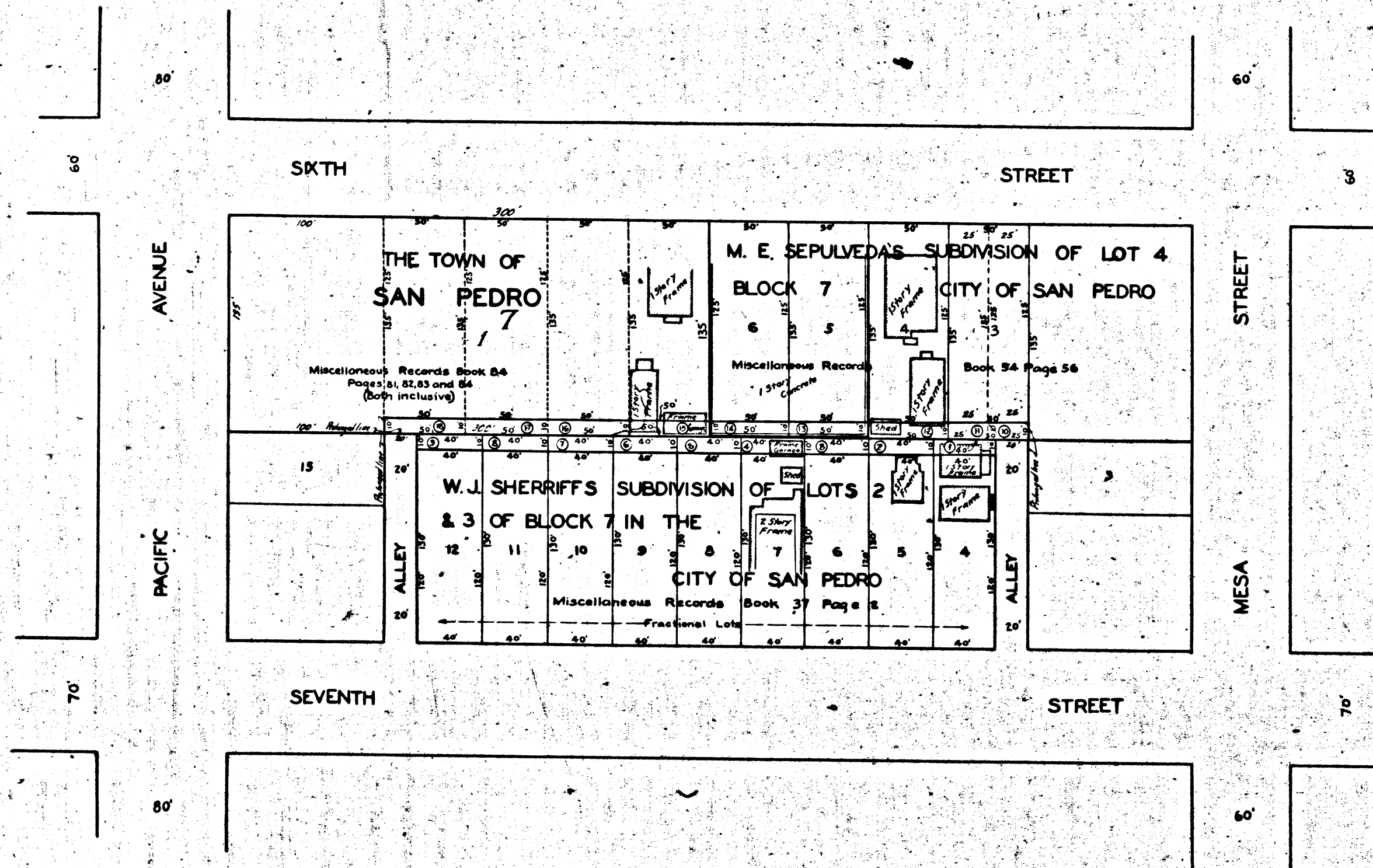
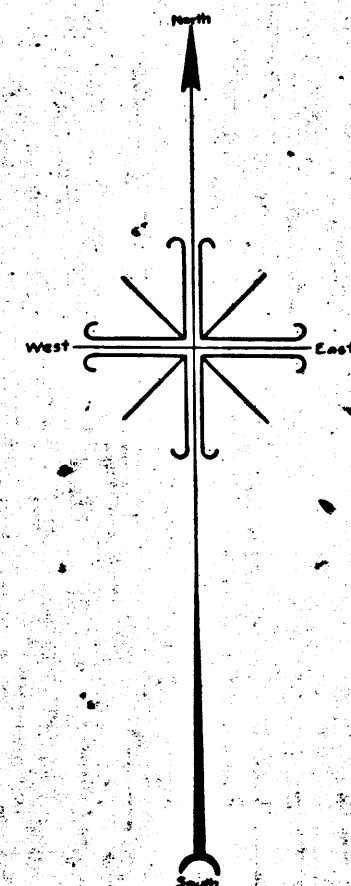


V-5331



O & W. ALLEY SLY OF 6th ST (SAN PEDRO DISTRICT)
 BET. MESA ST AND PACIFIC AVE.
 CHARGE NO. 6509



MAP
 SHOWING LAND TO BE CONDEMNED
 FOR THE OPENING OF AN
ALLEY
 APPROXIMATELY MIDWAY
 BETWEEN
SIXTH STREET AND SEVENTH STREET
 FROM
 THE FIRST ALLEY WESTERLY OF MESA STREET
 TO
 THE SECOND ALLEY WESTERLY OF MESA STREET
 (SAN PEDRO DISTRICT)
 IN THE
 CITY OF LOS ANGELES CAL
 IN ACCORDANCE WITH ORDINANCES NOS 60376 AND 62115
 JOHN C. SHAW CITY ENGINEER OCTOBER 1928
 SCALE 1" = 50'

Sht. 29.
 Superior Court Case No. 268902
 Suit for Condemnation
 Filed Jan. 4th 1929
 City of Los Angeles, Plaintiff.
 Vs
 L. C. Tubbs et al, Defendants
 Interlocutory judgment as to
 parcels 3, 13 & 14 rendered May
 21st 1930. Judg. Bk. 749-289.
 Interlocutory judgment as to
 parcels 9 & 18 rendered May
 22nd 1930. Judg. Bk. 749-296.
 Interlocutory judgment as to
 parcels 1, 2, 4, 5, 6, 7, 8, 10, 11, 12,
 15, 16 and 17 rendered Aug. 21,
 1930. Judg. Bk. 762-323.
 Final judgment in favor of Plaintiff, as
 per map, rendered May 21, 1931.

NOTE: Land to be condemned shown colored red.
 Dotted lines and figures show property holdings in cases where they
 differ from recorded subdivisions.
 Figures in circles indicate the parcel numbers as set forth in
 paragraph VIII of the complaint.

A-5331

D: 84-165, O.R. 10895-152

10 Y 753904

ECI