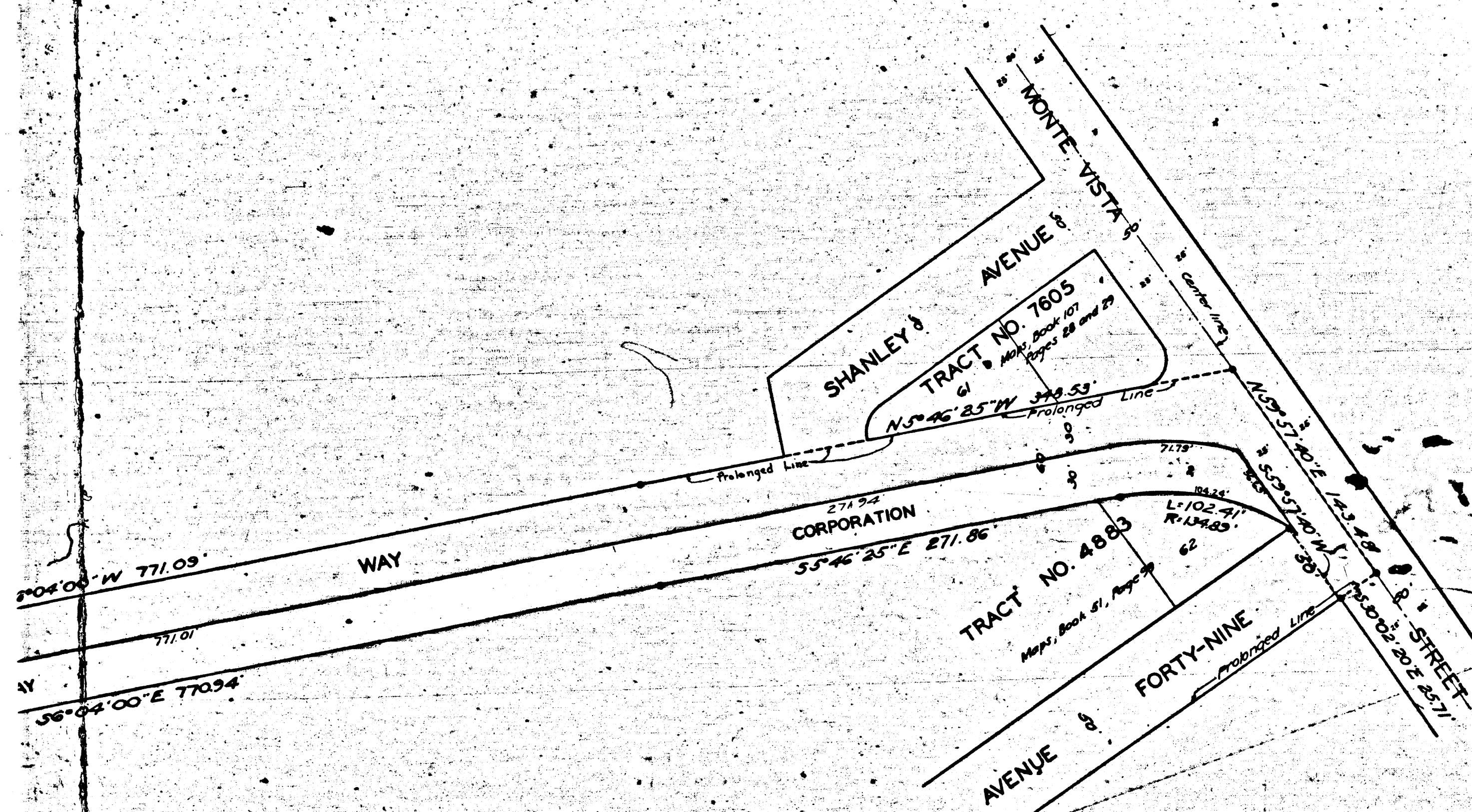
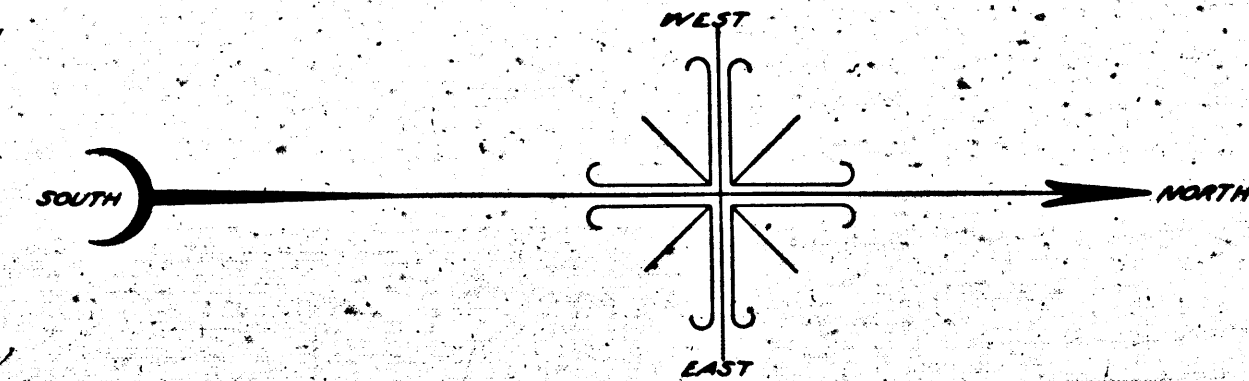


O&W-MARMION WAY-AVE 49 to MUSEUM DR.
Charge 11430



MAP
SHOWING THE LAND TO BE CONDEMNED
FOR THE
OPENING WIDENING EXTENDING AND LAYING OUT
OF
MARMION WAY
BETWEEN
MONTE VISTA STREET
AT
AVENUE FORTY-NINE
AND A POINT APPROXIMATELY
TWENTY(20) FEET SOUTHWESTERLY OF
MUSEUM DRIVE
IN THE
CITY OF LOS ANGELES CALIF.
IN ACCORDANCE WITH ORDINANCES NOS. 60017 AND 62074
JOHN C SHAW- CITY ENGINEER OCTOBER 1928

SCALE IN FEET

Notes - Land to be condemned shown colored red.
Figures in circles indicate the parcel numbers as set forth in
Paragraph III of the Complaint.

Superior Court Case No. 269361

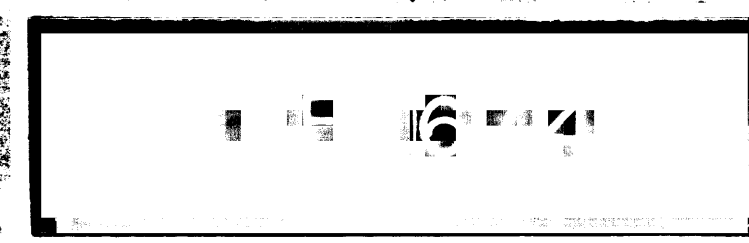
Suit for Condemnation

Filed Jan. 11, 1929

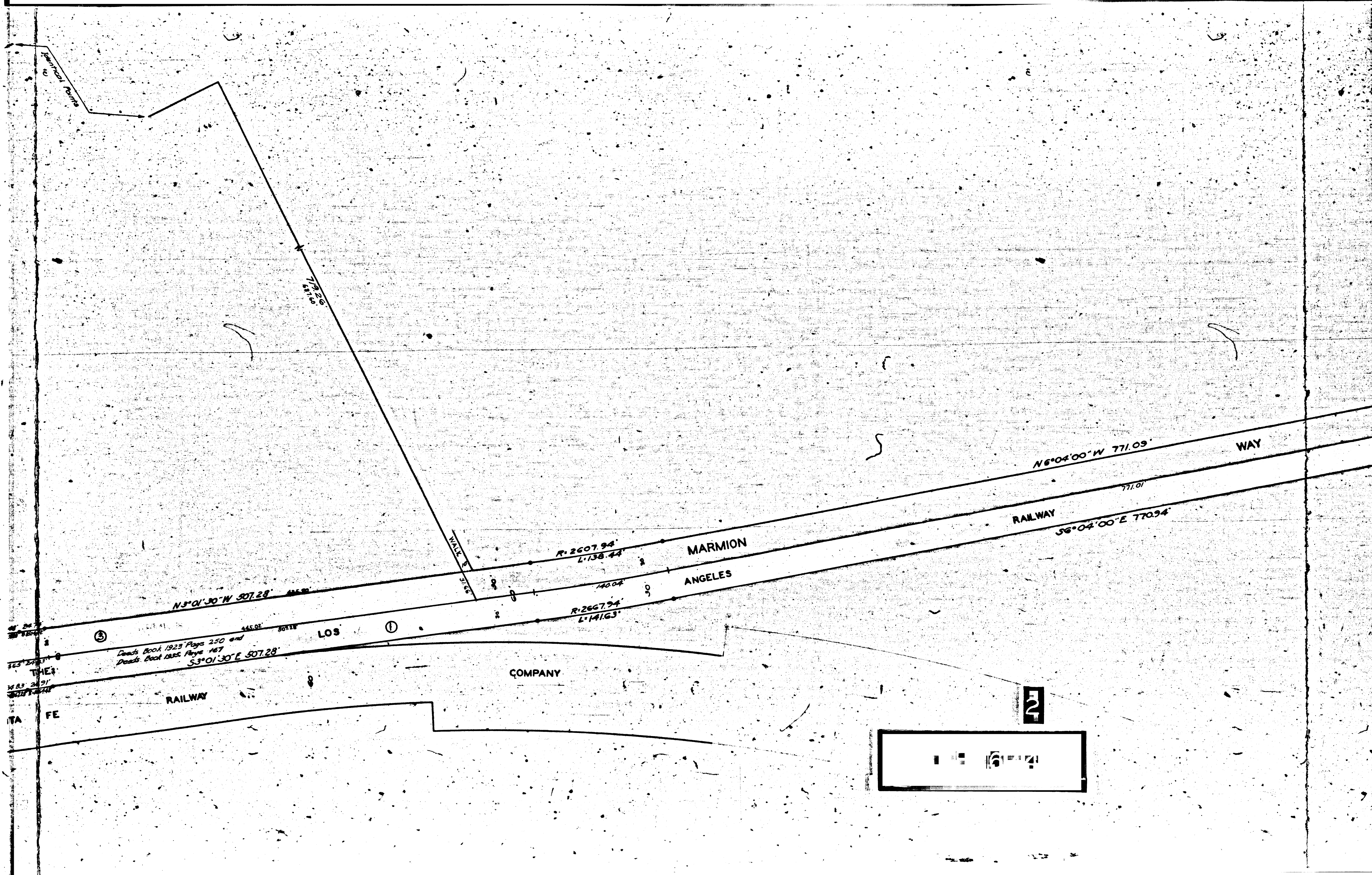
City of Los Angeles, Pltff.

Southwest Museum et al. Def.

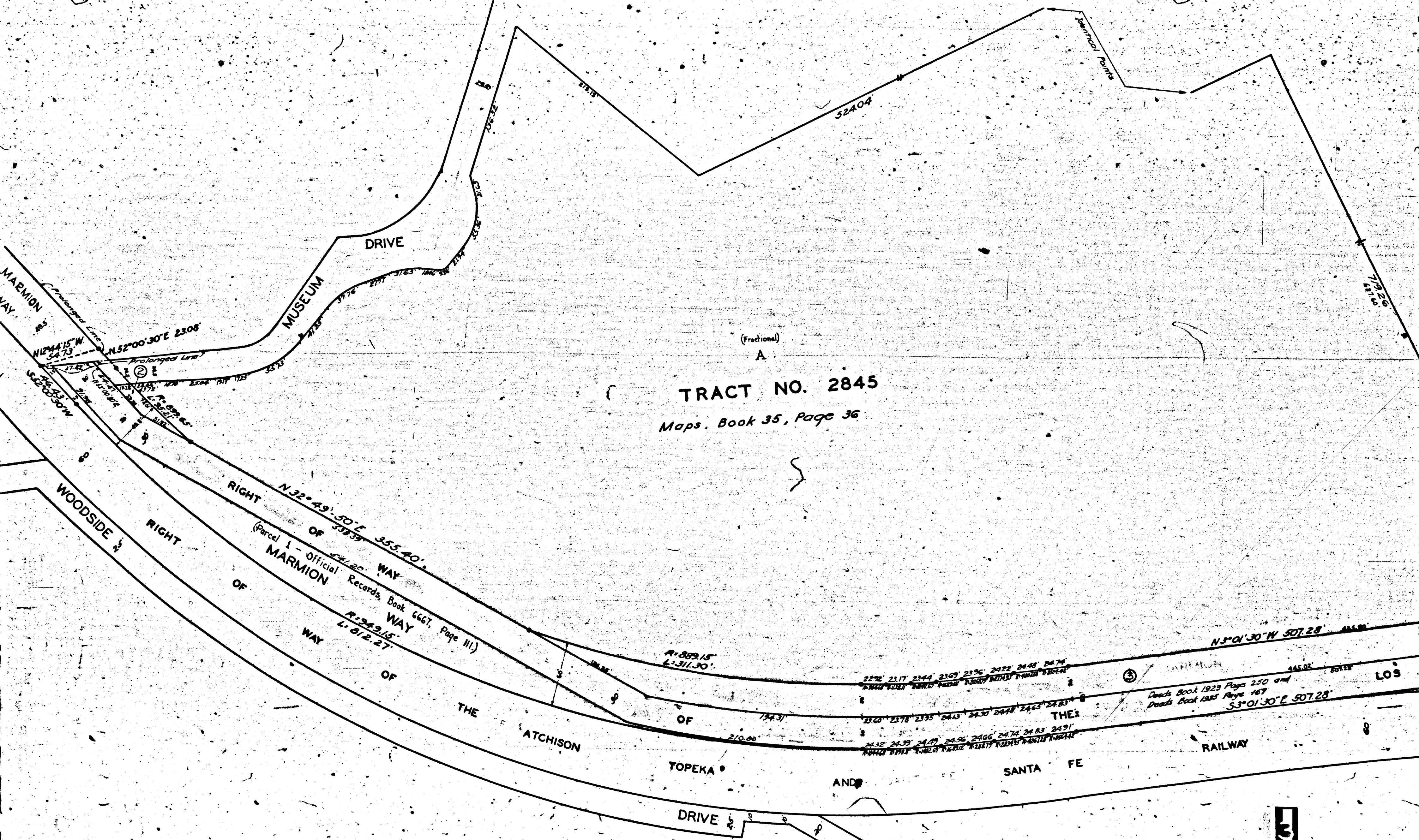
Proceedings abandoned May
4th 1930



A-5323



V-2303



TRACT NO. 2845
 Maps, Book 35, Page 36

