

Sht- 4
Sht- 35
Sht- 36
A- 729
A- 304
A- 428

EXHIBIT "A"
STREET OPENING DISTRICT NO. 59
OF THE
COUNTY OF LOS ANGELES
FOR
THE WIDENING
OF
EASTERN AVENUE

MAP SHOWING PROPERTY TO BE ACQUIRED IN ACCORDANCE
WITH THE PROVISIONS OF THE COUNTY STREET OPENING ACT
OF 1923, APPROVED MAY 11, 1923.
SCALE: 1IN. = 40FT. JANUARY, 1929.
J.E. ROCKHOLD - COUNTY SURVEYOR

LEGEND

LAND SOUGHT TO BE ACQUIRED SHOWN COLORED RED.
NUMBERS IN CIRCLES INDICATE PARCELS SOUGHT TO BE CONDEMNED.
THE PARCELS ARE DESCRIBED IN PARAGRAPH III OF THE COMPLAINT.
PORTION COLORED RED SHOWS LOCATION, GENERAL ROUTE AND TERMINI
OF PUBLIC ROADS TO BE CONDEMNED.

Sheet 35
Sht. 36
Sht. 4

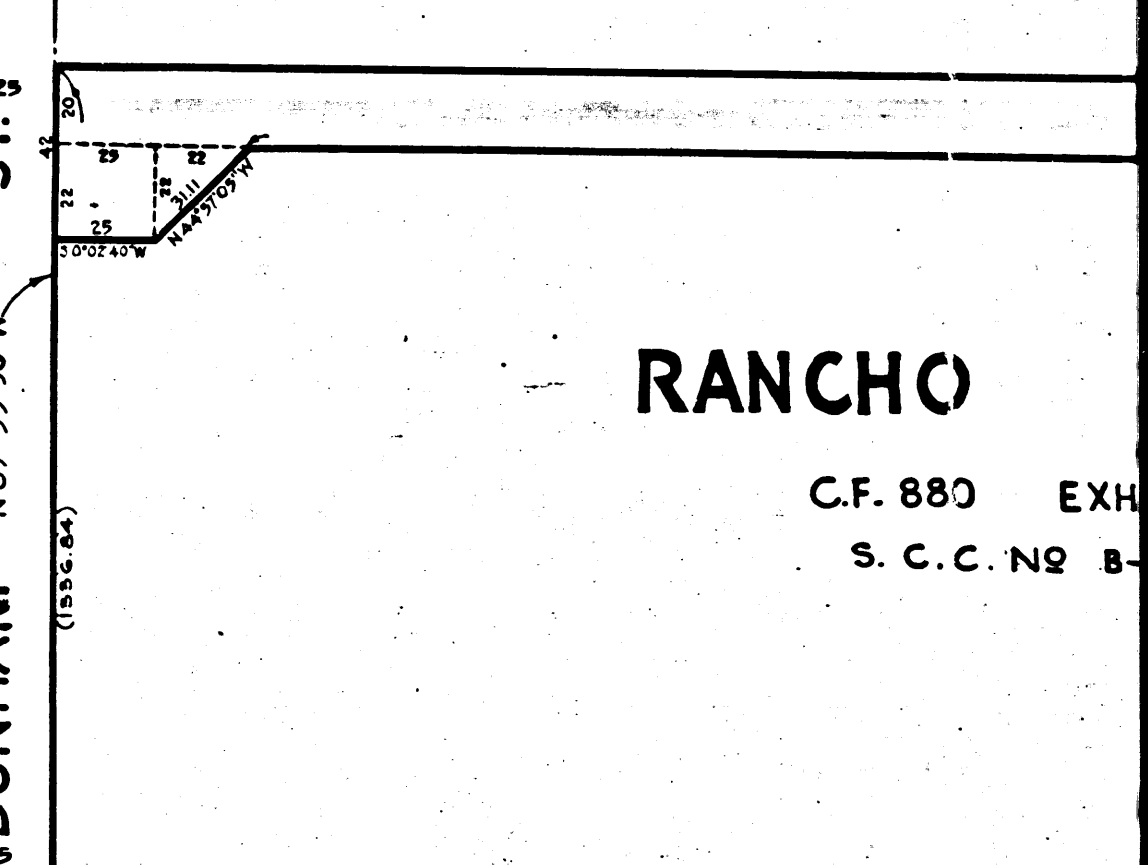
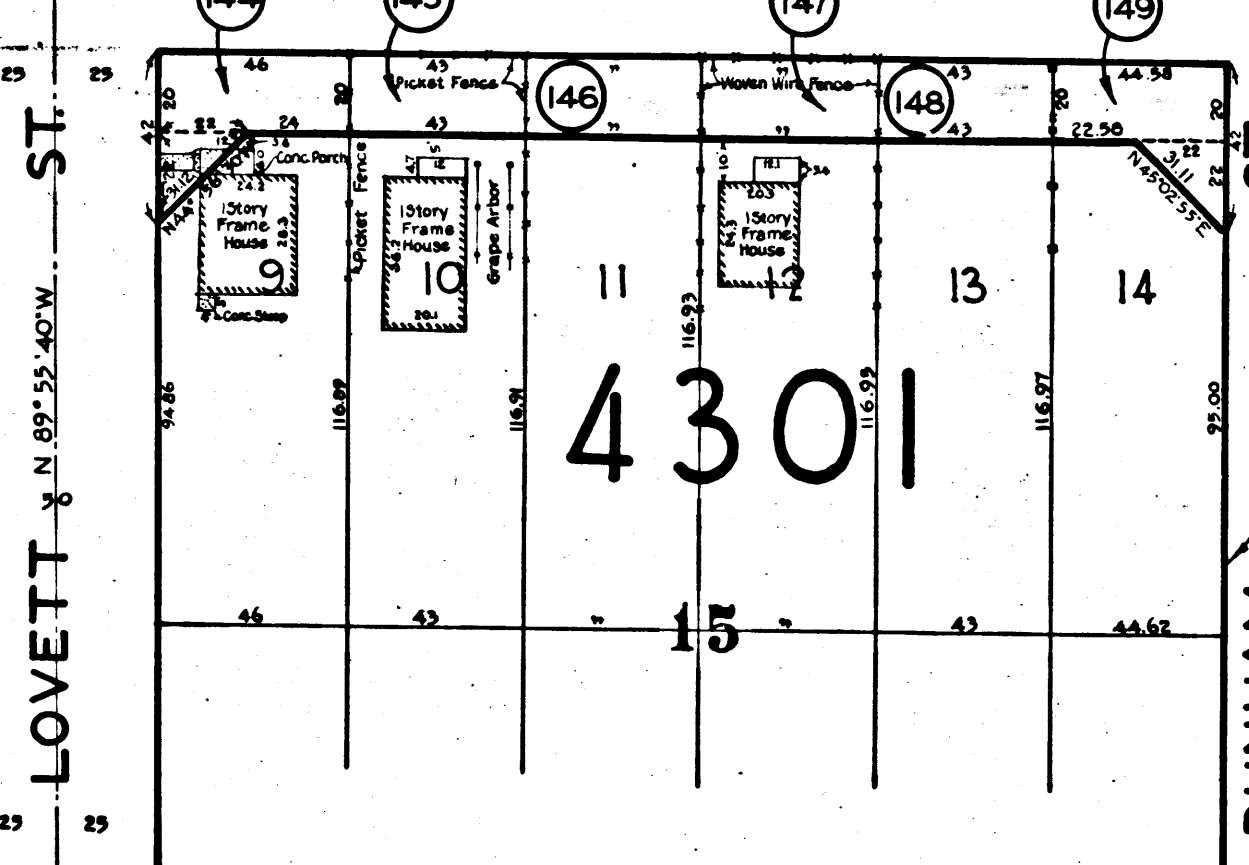
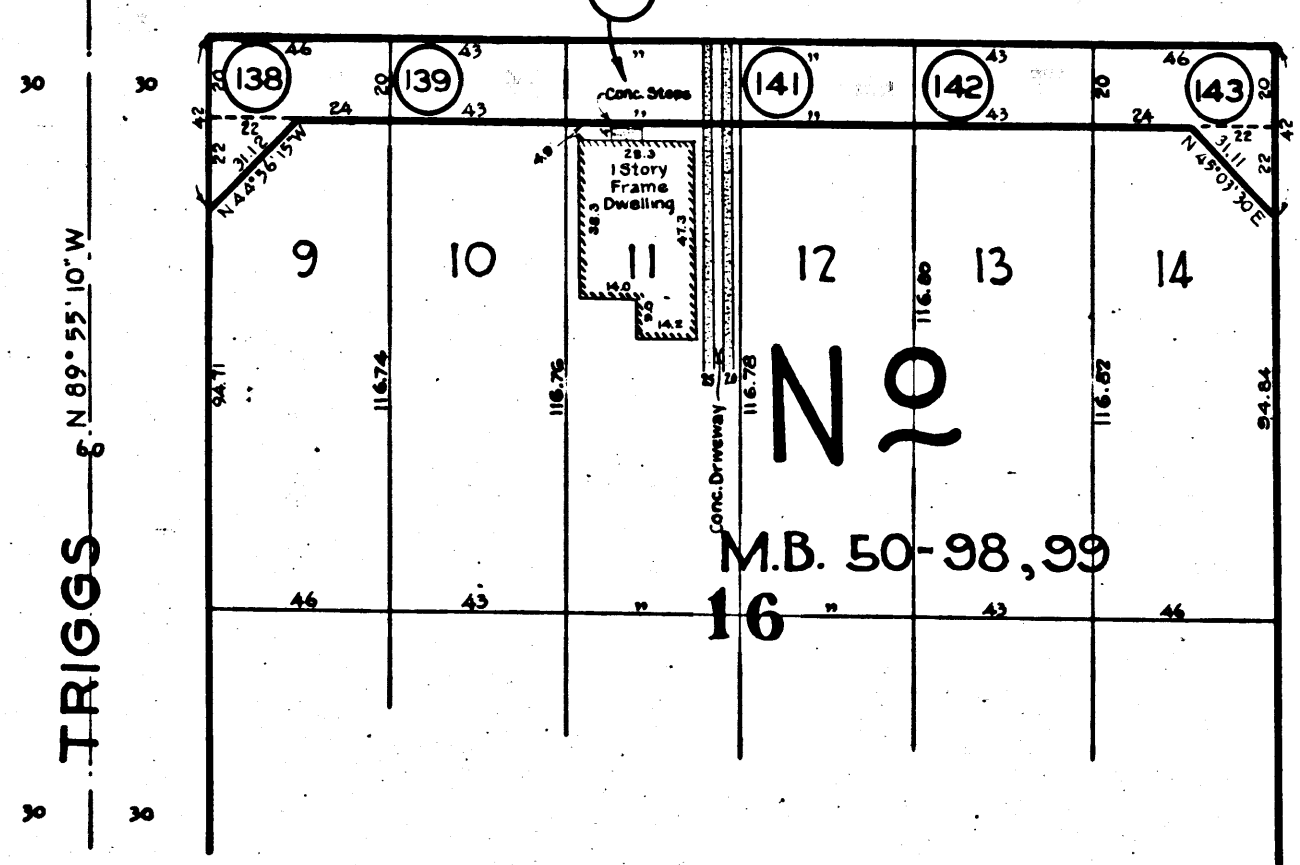
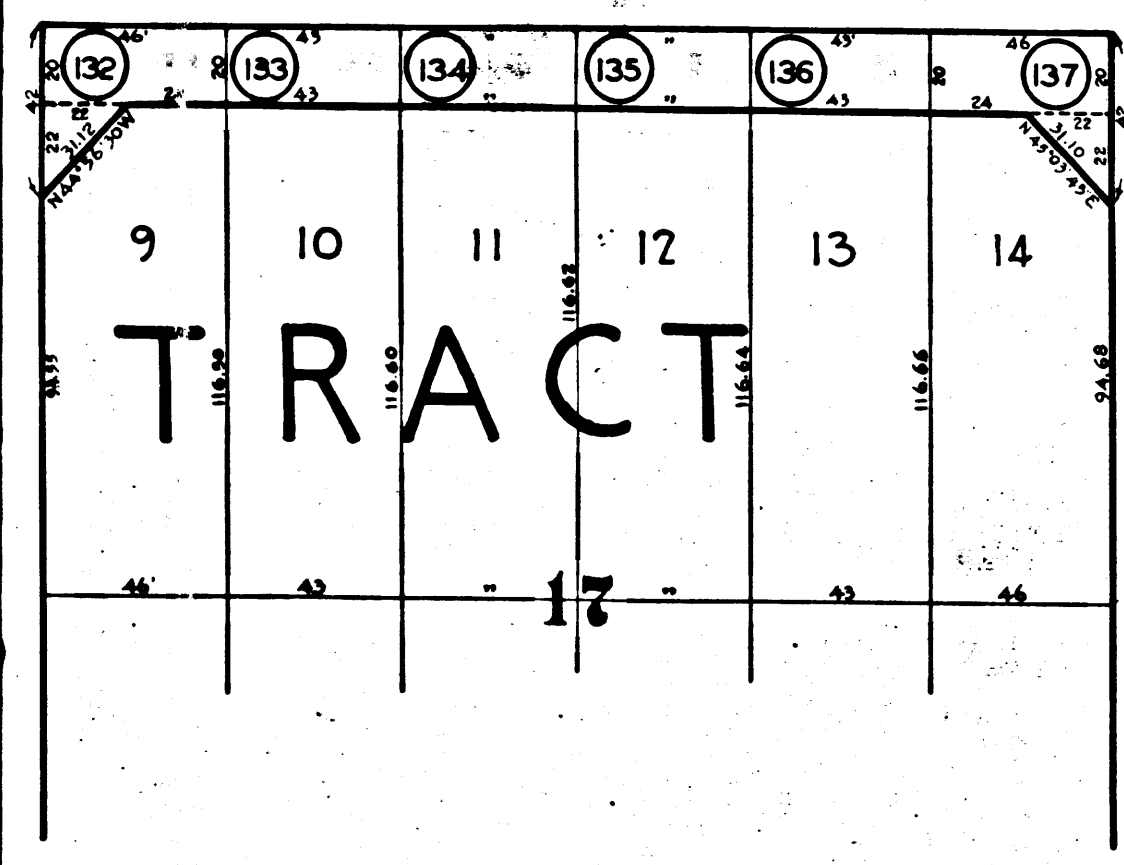
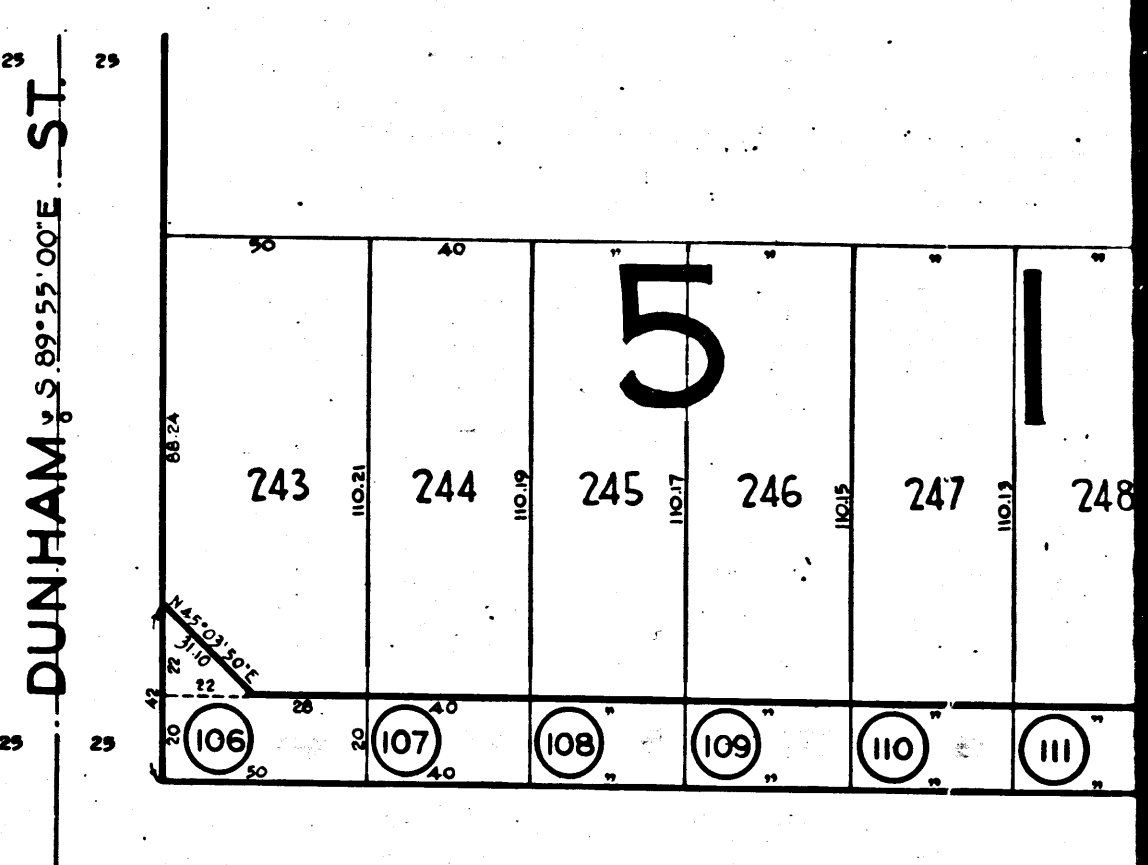
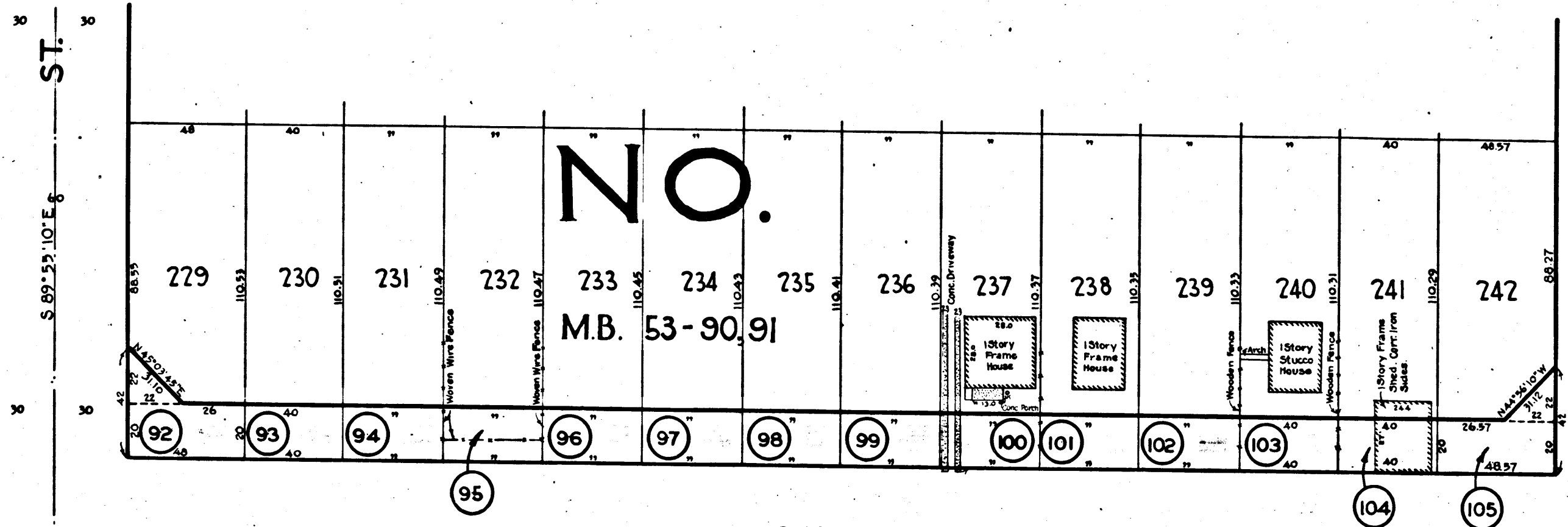
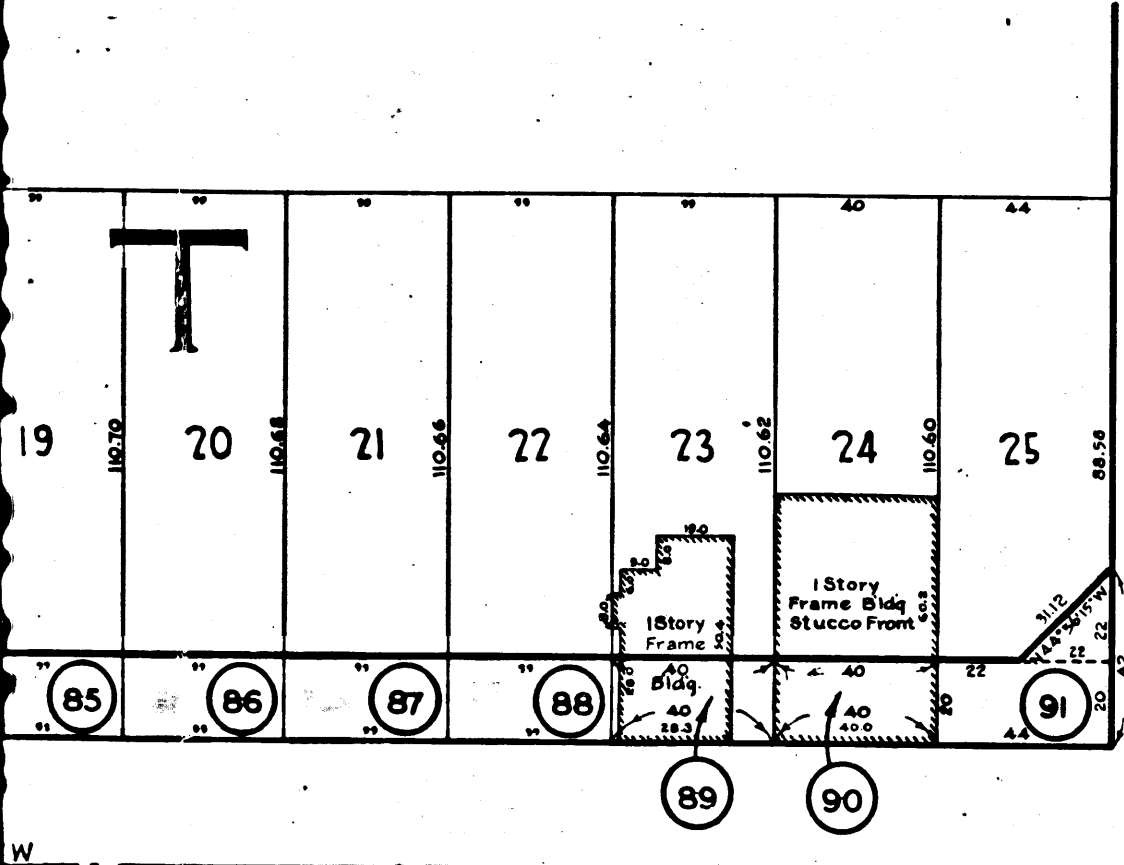
Superior Court Case No. 279516
Suit for Condemnation
Filed May 27th 1929.
County of Los Angeles, Pltff.
vs
W. C. Albright et al, Defendants.
Interlocutory judgment as per
map, rendered Sept. 24th 1931.
Judg. Bk. 793-172.
Proceedings abandoned March
28th 1932 and various judgments
of dismissal rendered.

Negative of this map filed in Blue Print
Dept. under Neg. No. 153 (2 Sheets)

SHEET 2 OF 2 SHEETS		
S.O. DISTRICT NO. 99		
DRAWN BY	LUNT	JAN 1929
TRACED BY	SILVERMAN	JAN 1929
CHECKED BY	LEKO	FEB. 1929

C.F. 1684 -

TRACT NO. 8626
L.A. & S.L.R.R. R/W
M.B. 121 - 96 - 100



ST. S 89° 25' 10" E 6'

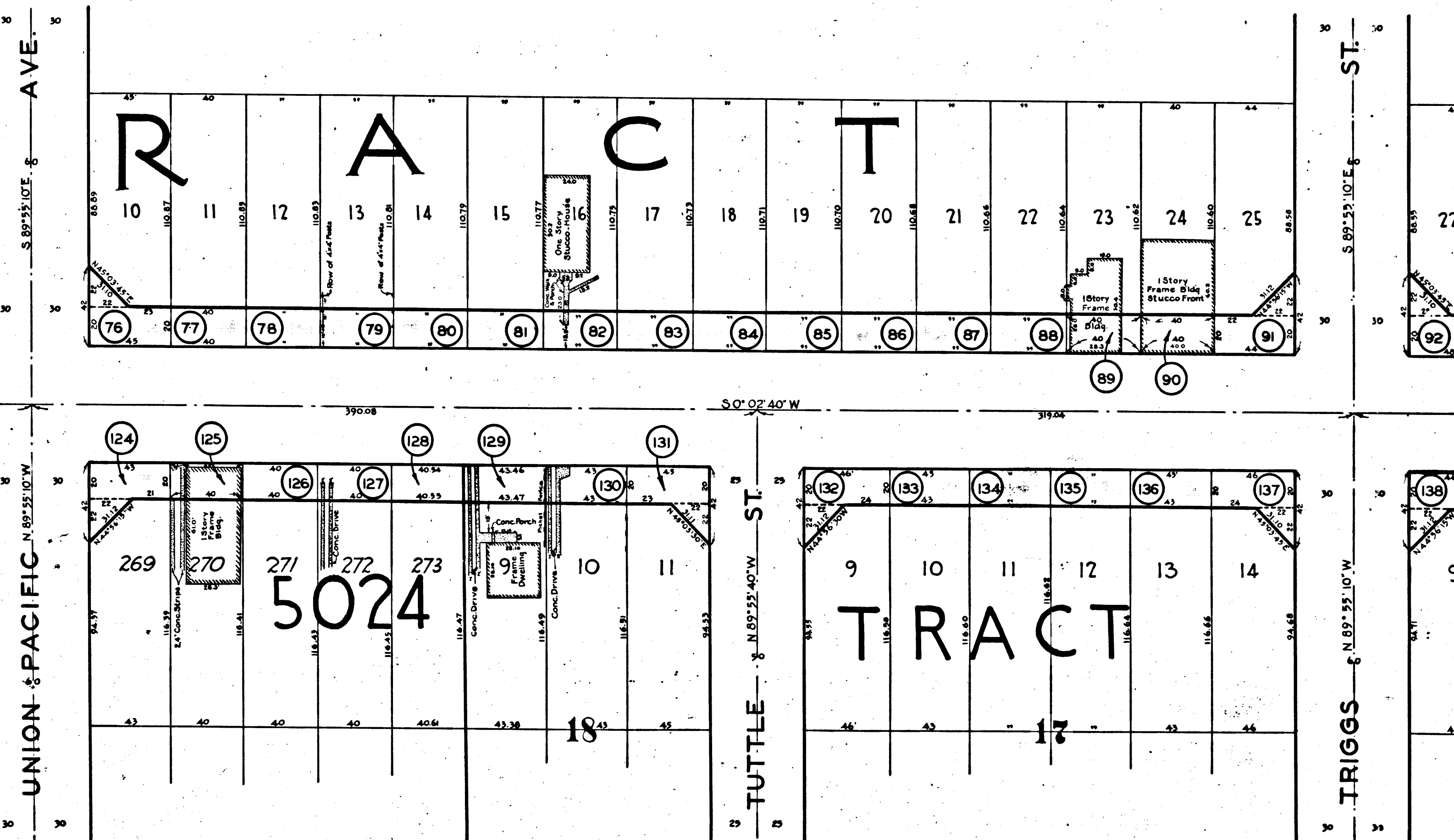
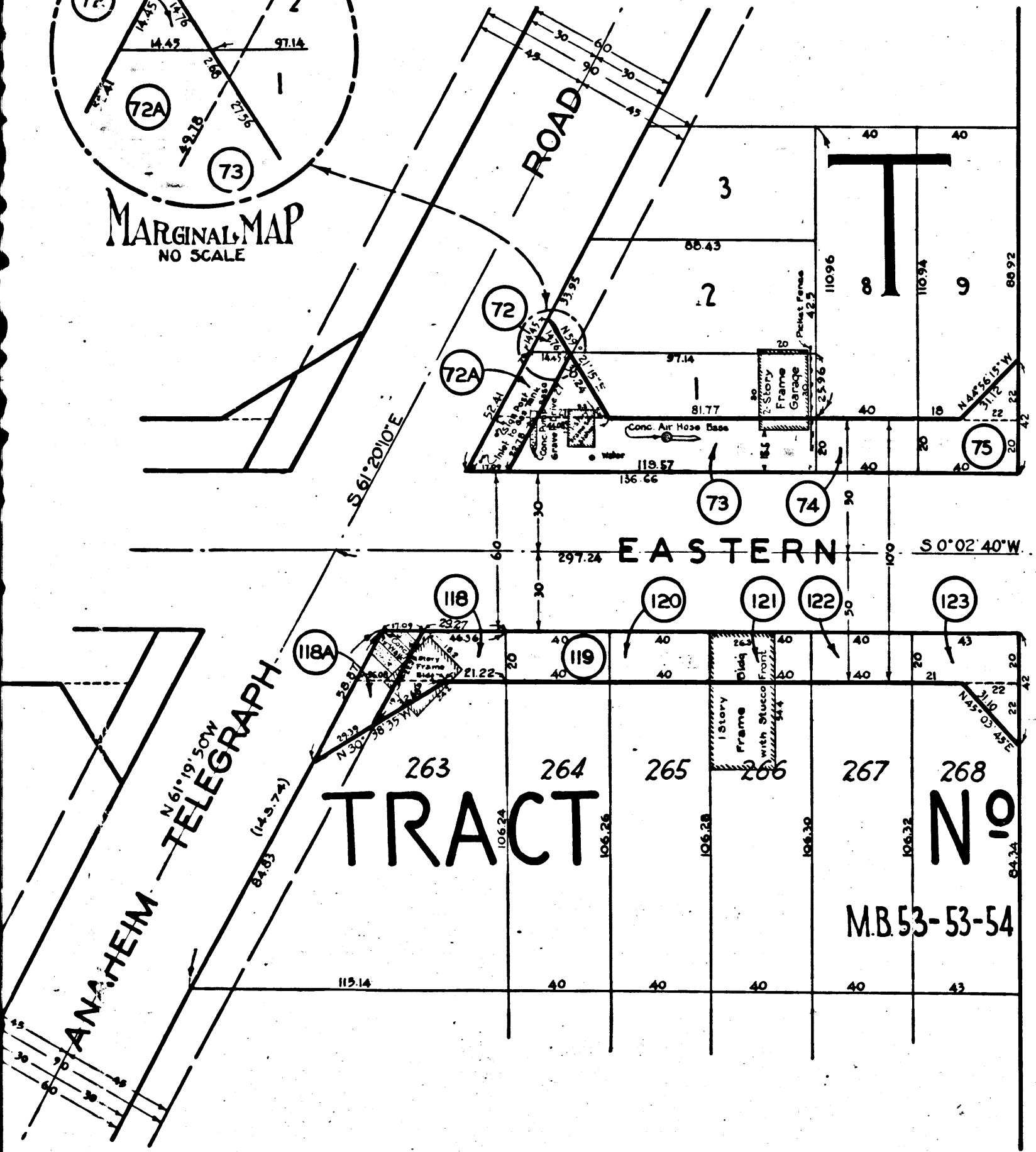
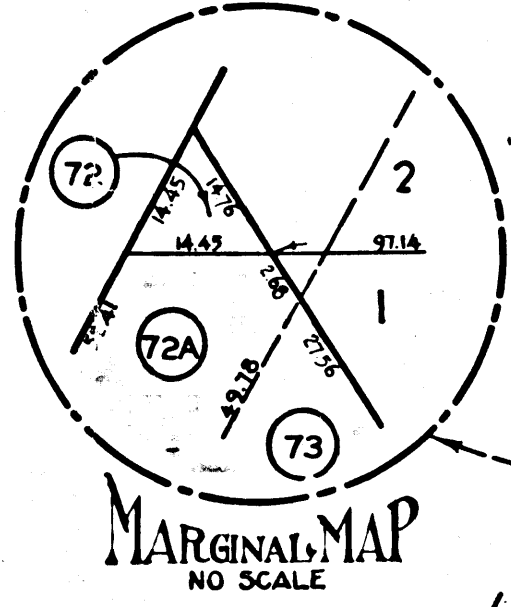
TRIGGS N 89° 55' 10" W 6'

LOVETT N 89° 55' 40" W 6'

DUNHAM S 89° 55' 00" E 25'

DUNHAM N 89° 55' 50" W 25'

C.F. 1684 -



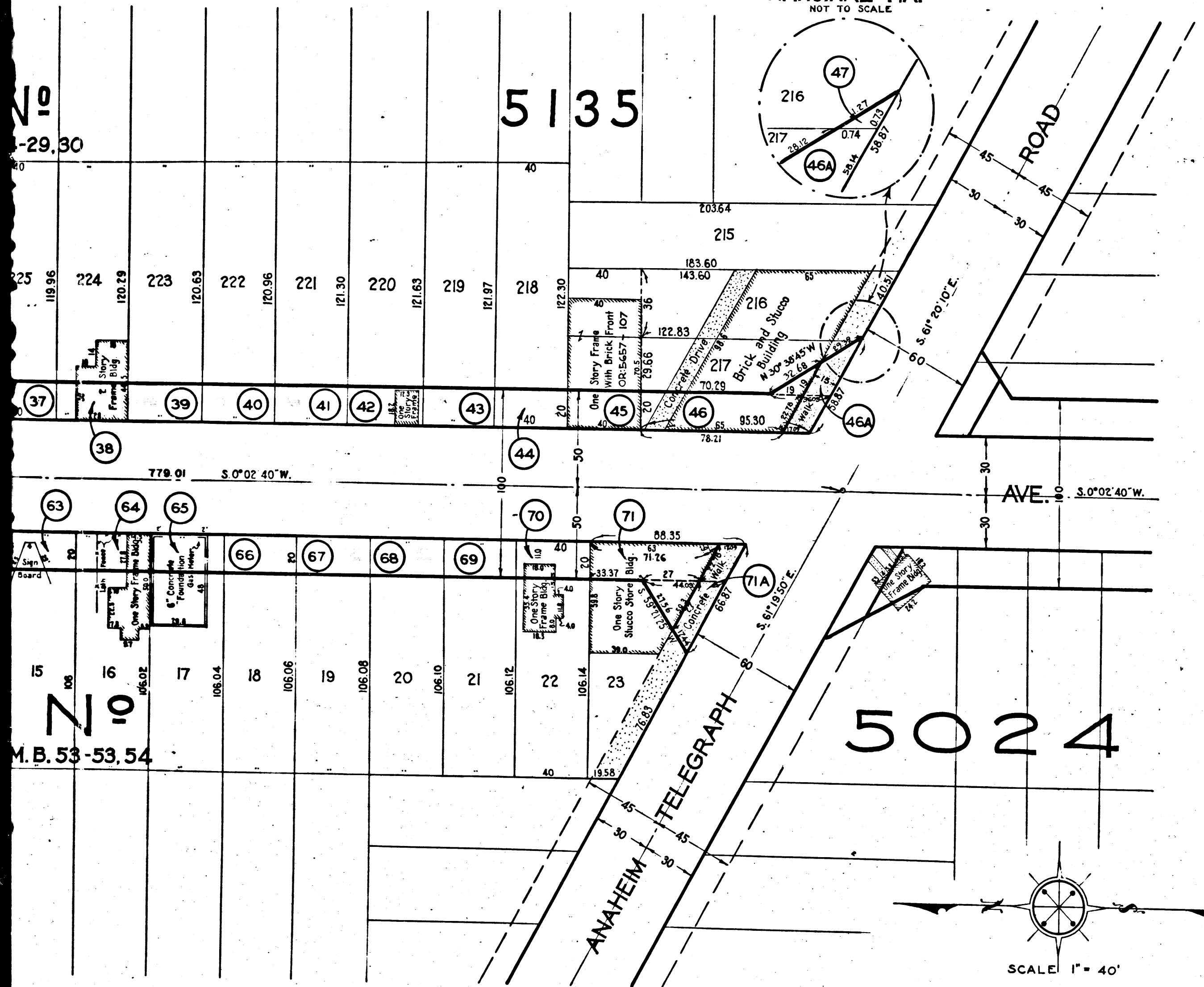
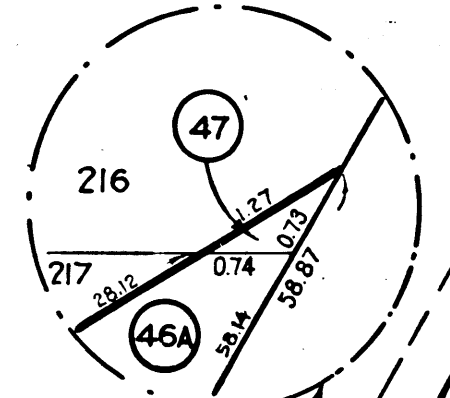
3

C.F. 1684 -

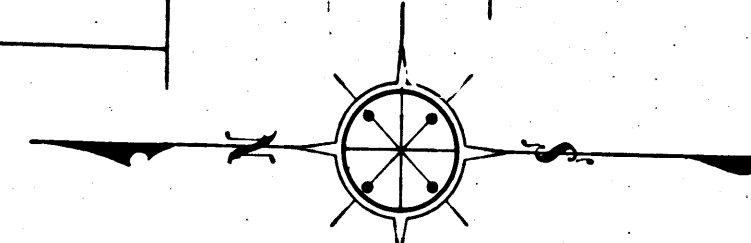
No
-29.30

5135

MARGINAL MAP
NOT TO SCALE



SCALE 1" = 40'



SHEET 1 OF 2 SHEETS
S.O. DISTRICT N^o 59

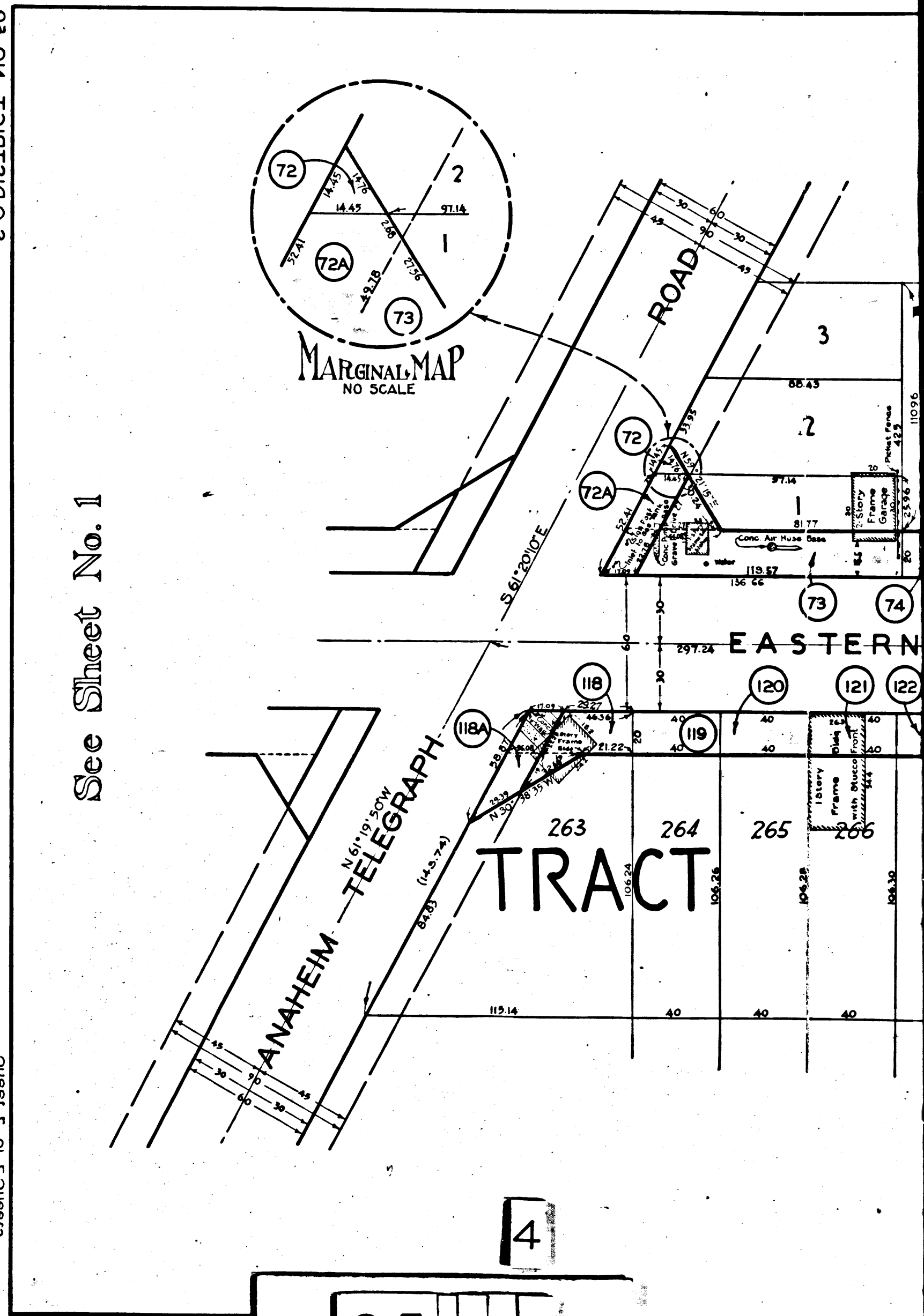
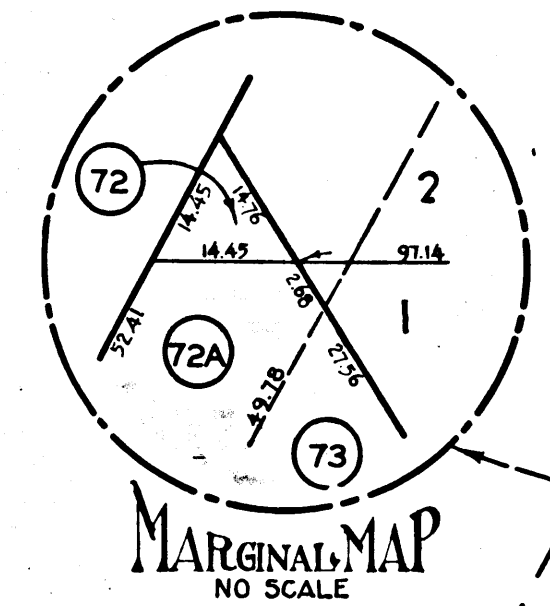
Drawn by	Crane	Jan. 1929
Traced by	G.C. Wright	Jan. 1929
Checked by	Silverman	Jan. 1929

See Sheet No. 2

SHEET 1 OF 2 SHEETS
S.O. DISTRICT NO. 59

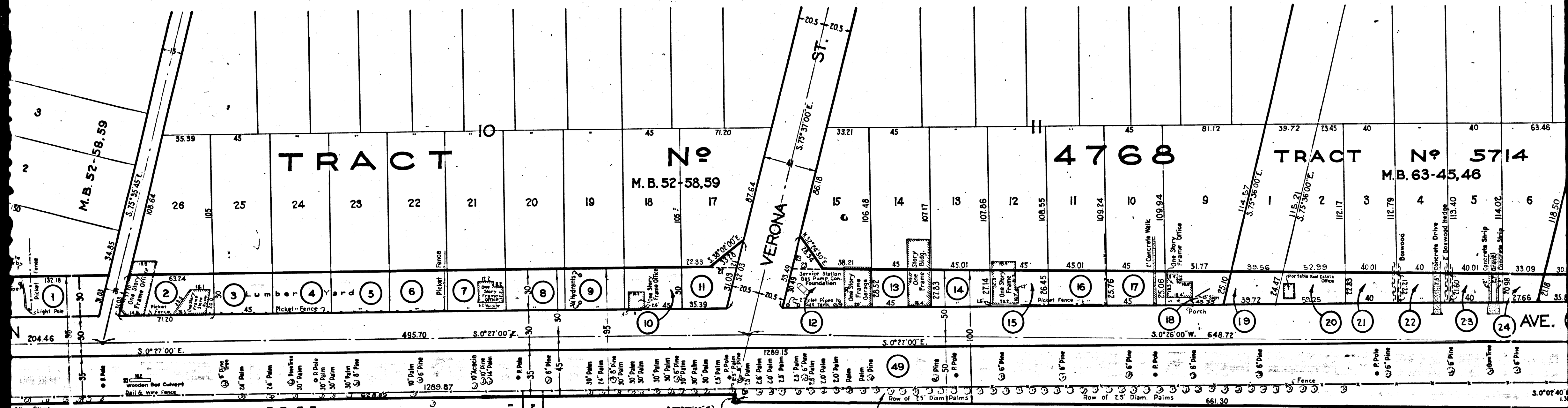
SHEET 1 OF 2 SHEETS
S.O. DISTRICT NO. 59

See Sheet No. 1



C.F. 1684 -

4



2

B'NAI BRITH CEMETERY H.W. MILLS' SUBDIVISION

M.R. 22-18
R.F. 205

1311.38

6

C.F. 1684 -

