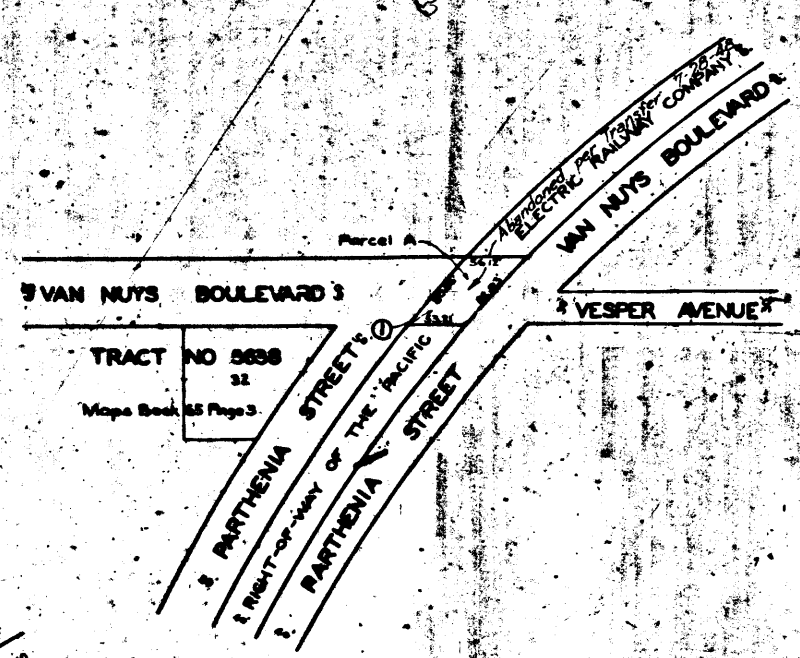
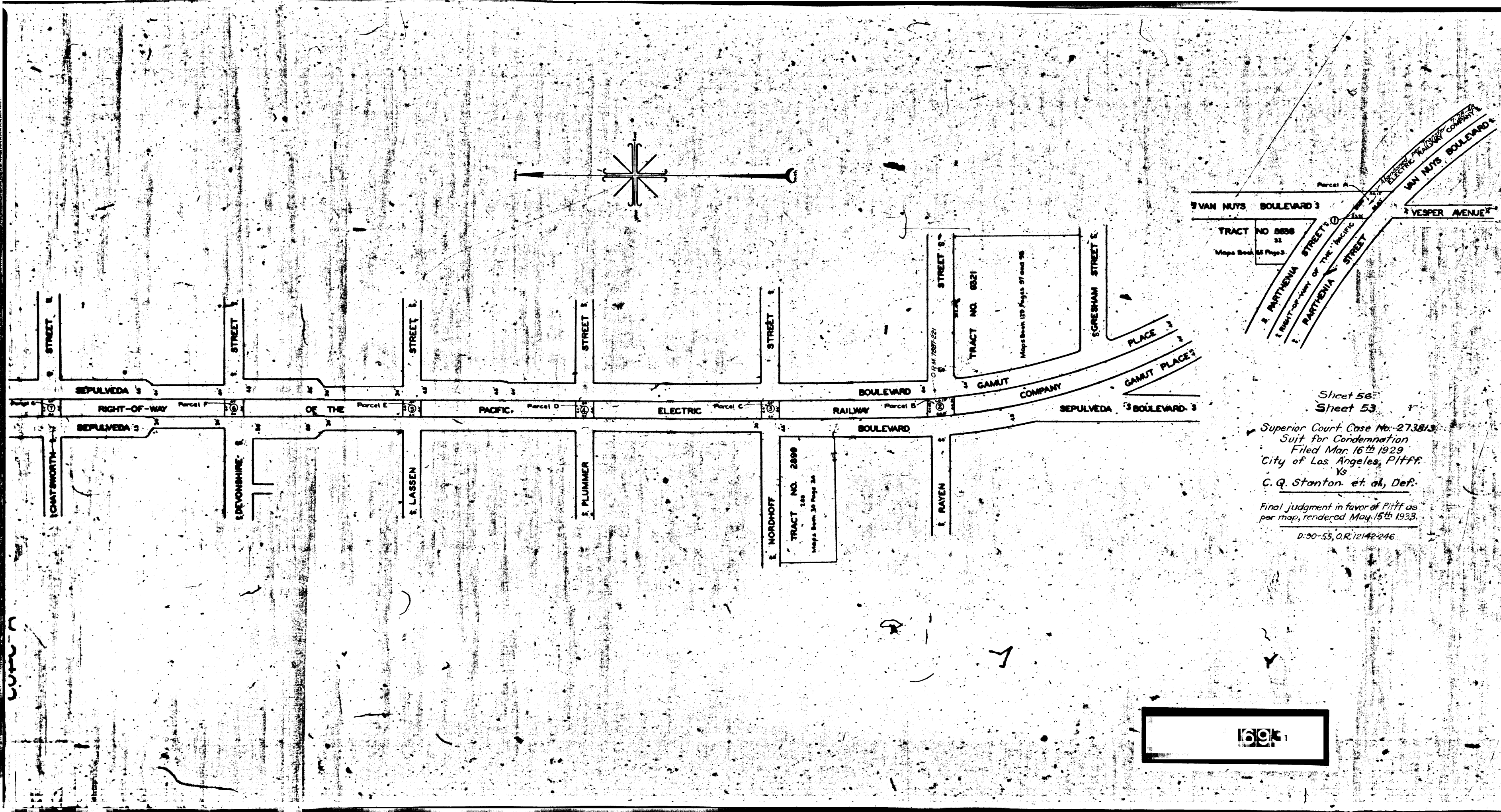
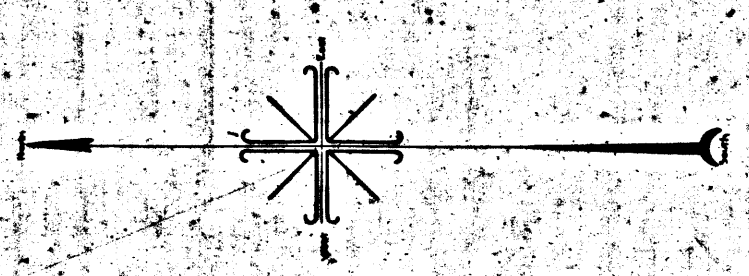


SEFULVEDA BLVD. & PARTHENA ST. IMPR. DIST.
FILE NO 183-15 CHARGE NO 2899

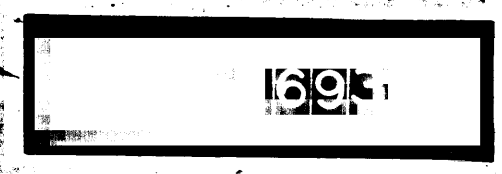


Sheet 56
Sheet 53
Superior Court Case No. 273813
Suit for Condemnation
Filed Mar. 16th 1929
City of Los Angeles, Plfff.
Vs
C. Q. Stanton, et al, Def.
Final judgment in favor of Plfff as
per map, rendered May 15th 1933.
D:90-55, O.R. 12142-246

MAP
SHOWING LAND TO BE CONDEMNED
FOR
PUBLIC STREET PURPOSES
ACROSS THE RIGHT-OF-WAY
OF THE
PACIFIC ELECTRIC RAILWAY COMPANY
AT THE FOLLOWING LOCATIONS
PARTHENA STREET AT VAN NUYS BOULEVARD
SEFULVEDA BOULEVARD AT RAVEN STREET
SEFULVEDA BOULEVARD AT NORDHOFF STREET
SEFULVEDA BOULEVARD AT PLUMMER STREET
SEFULVEDA BOULEVARD AT LASSEN STREET
SEFULVEDA BOULEVARD AT DEVONSHIRE STREET
SEFULVEDA BOULEVARD AT CHATSWORTH STREET
IN THE
CITY OF LOS ANGELES CAL.
IN ACCORDANCE WITH ORDINANCE NO 62656
JOHN C. SHAW CITY ENGINEER JANUARY 1929
SCALE 1 INCH=100 FEET

NOTE: Land to be condemned shown colored red.
Figures in circles indicate the parcel numbers as set
forth in paragraph VIII of the complaint.

A-5465



A-2402

A-2402