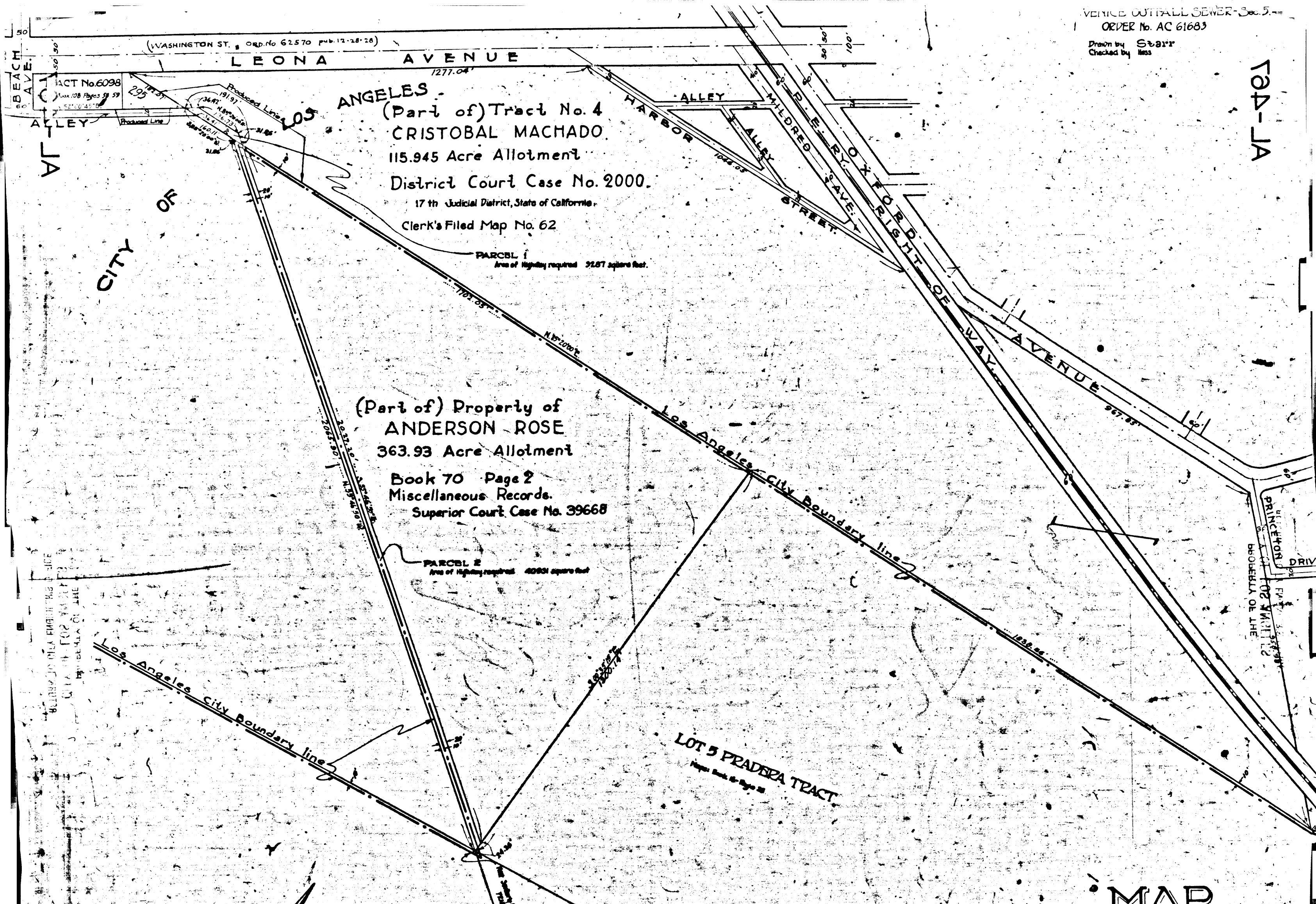


Drawn by Starr
Checked by Hess

704-JA



Beach Ave.
Alley
Tract No. 6098
Max. 28 Acres 29 59

CITY OF

LOS ANGELES
(Part of) Tract No. 4
CRISTOBAL MACHADO
115.945 Acre Allotment
District Court Case No. 2000.
17th Judicial District, State of California.
Clerk's Filed Map No. 62

(Part of) Property of
ANDERSON ROSE
363.93 Acre Allotment
Book 70 Page 2
Miscellaneous Records.
Superior Court Case No. 39668

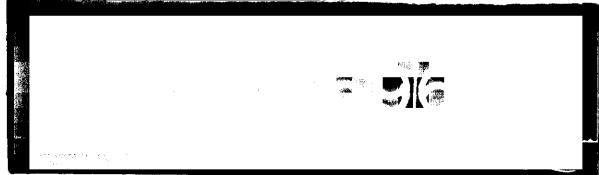
PARCEL 1
Area of Highway required 32.57 square feet.

PARCEL 2
Area of Highway required 42.94 square feet.

LOT 5 PRADERA TRACT
Pages Book 60 Page 28

SCALE 1" = 150'

Superior Court Case No. 274131
Suit for Condemnation
Filed Mar. 20th 1929.
City of Los Angeles, Plaintiff
Vs.
George D. Howland et al., Defendants
Case abandoned July 11th 1930.



MAP

SHOWING LAND TO BE CONDEMNED FOR PUBLIC HIGHWAY PURPOSES
IN THE CITY OF LOS ANGELES
PARTLY IN THE UNINCORPORATED PORTION OF
THE COUNTY OF LOS ANGELES,
STATE OF CALIFORNIA
AN ALLEY BETWEEN
THE NORTHEASTERLY TERMINUS OF THE FIRST ALLEY
SOUTHEASTERLY FROM
LEONA AVENUE (WASHINGTON ST.)
AND A POINT APPROXIMATELY
2200 FEET SOUTHEAST FROM THE INTERSECTION
IN ACCORDANCE WITH ORDINANCE No. 62566
(Published 12-17-28)

John C. Shea City Engineer
January 1929
Scale 1" = 150'

Note: Land to be condemned shown hatched.

704-JA

704-JA