

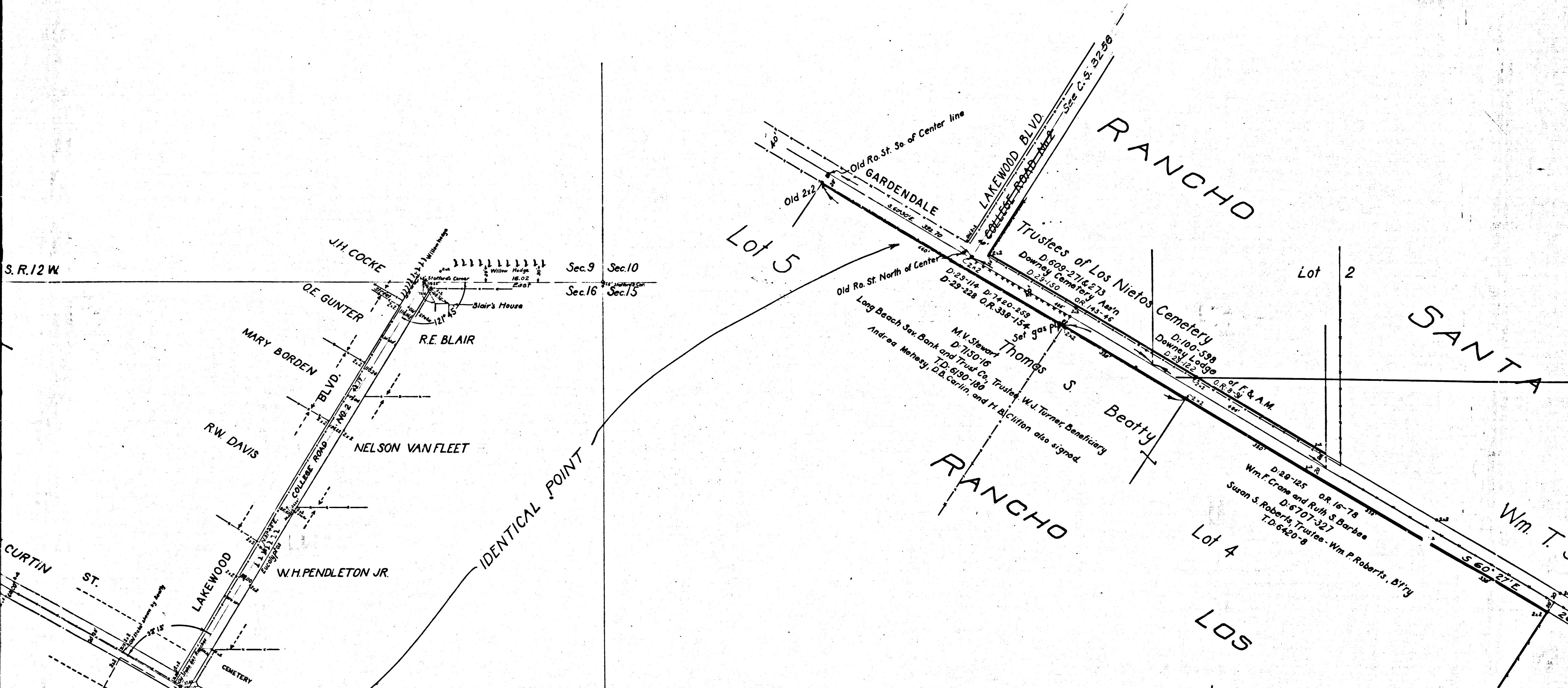
Portion of  
~~COLLEGE ROAD NO. 2~~ LAKEWOOD BLVD.  
 and ~~CURTIN & BACON Rd.~~ GARDENDALE ST.  
 In Downey and Alhambra Road Districts as surveyed  
 under instructions from Board of Supervisors  
 County Surveyor's Map No. 3263  
 March 1885 E.T. Wright Co. Surveyor

Scale  
 Scale for length 1 in. = 5 chs.  
 Scale for width 1 in. = 2 chs.  
 Note Book 2, Page 11  
 I M 33

College Road No. 1 changed to College Ave. D:13-79  
 College Road No. 2 " " Downey Cemetery Road D:13-81

C.S. 3263  
 RETRACED FROM THE CLOTH-MOUNTED EGG-SHELL  
 ORIGINAL MAP WHICH HAS BEEN DISCARDED  
 NOTE: Original hard copy Filed at PACOIMA VAULT, Nov. 1940  
 RETRACED BY T. KARDOS FEB. 1957  
 CHECKED BY R.J.B.

CS	3	2	6	3
A	1	OF	A	3



S. R. 12 W

Sec. 9 Sec. 10  
Sec. 16 Sec. 15

Lot 5

Lot 2

Lot 4

LOT 3

MAP

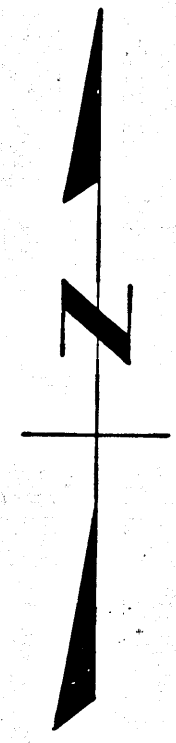
ST. GARDENDALE AVE. (D: 49-32)  
~~Curtin and Bacon Road~~

As surveyed by order of the Hon. Board of Supervisors  
December 28, 1899. Jos. H. Smith, County Surveyor.  
county Surveyors Map No. 3263 1/2

Scale for length - 1" = 2 Chs.  
Scale for width - 1" = 100'  
F.B. 18 - P. 51

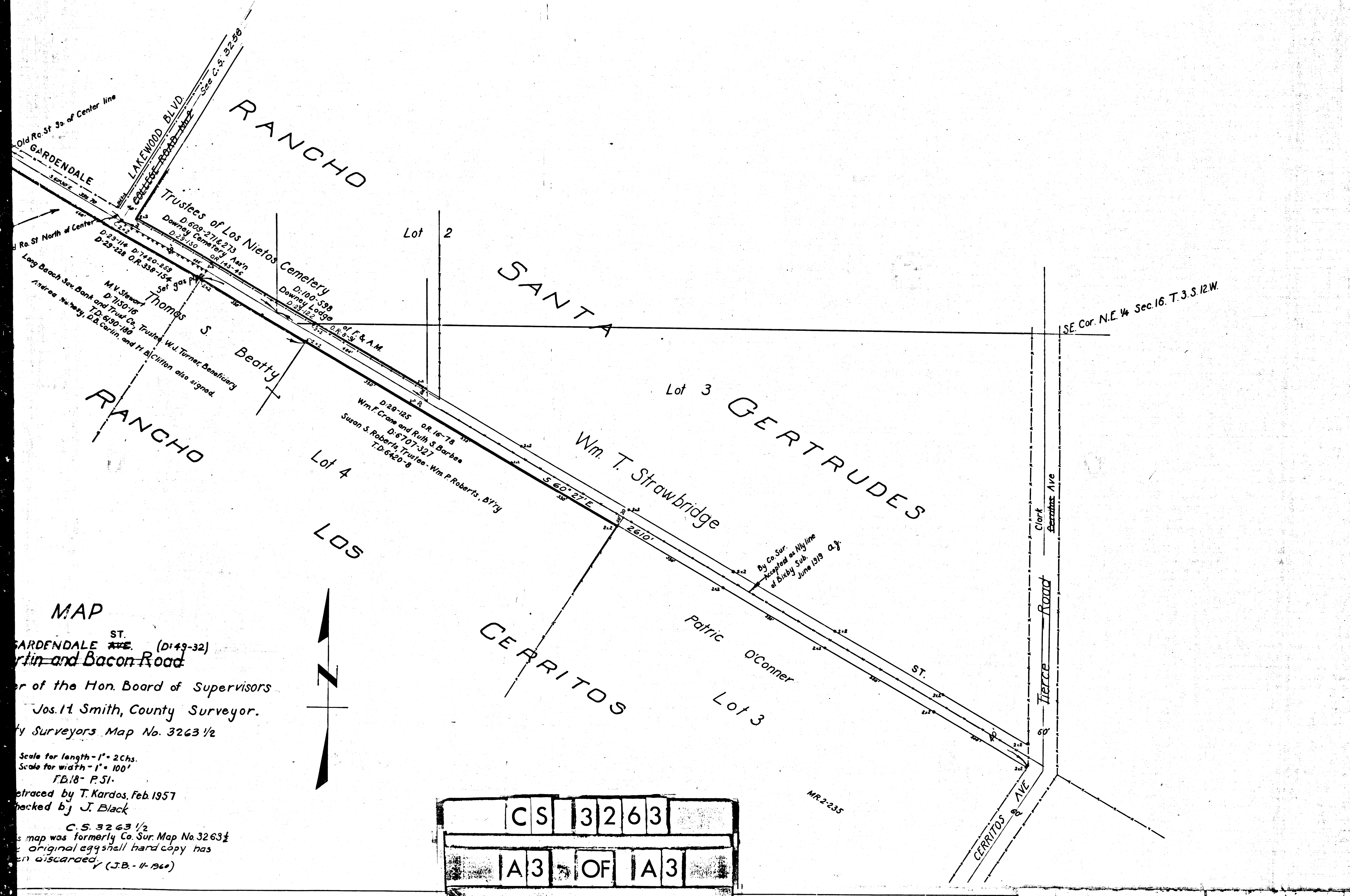
Retraced by T. Kardos, Feb. 1957  
Checked by J. Black

C. S. 3263 1/2  
NOTE - This map was formerly Co. Sur. Map No. 3263 1/2  
The original eggshell hard copy has  
been discarded (J.B. - 11-1960)



C. S. 3263  
RETRACED FROM THE CLOTH-MOUNTED EGG-SHELL  
ORIGINAL MAP WHICH HAS BEEN DISCARDED  
NOTE: Original hard copy Filed at PACOIMA VAULT. Nov. 1960  
RETRACED BY T. KARDOS FEB. 1957  
CHECKED BY R.J.B.

C	S	3	2	6	3
A	2	OF	A	3	



**MAP**

GARDENDALE ST. (D:49-32)  
 Martin and Bacon Road

of the Hon. Board of Supervisors  
 Jos. H. Smith, County Surveyor.  
 City Surveyors Map No. 3263 1/2

Scale for length - 1" = 200'  
 Scale for width - 1" = 100'  
 F.B. 18 - P. 51

Traced by T. Kardos, Feb. 1957  
 Checked by J. Black

C.S. 3263 1/2  
 This map was formerly Co. Sur. Map No. 3263 1/2  
 The original eggshell hard copy has  
 been discarded. (J.B. - 11-1960)

CS	3	2	6	3
A3	OF	A3		

MR-2-235