

# VERDUGO ROAD

from San Fernando Road to Watt's Subdivision

County Surveyor's Map No. 3265

April 24, 1895  
Scale 1 inch to 6 chains

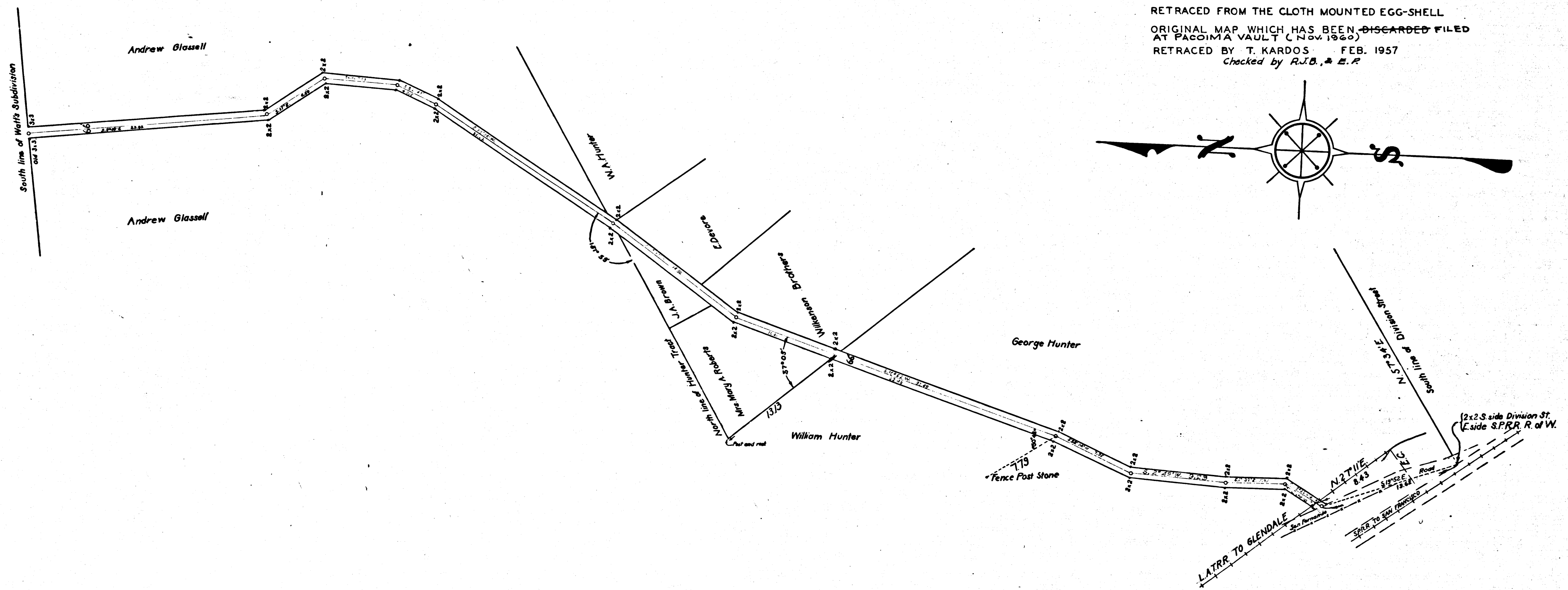
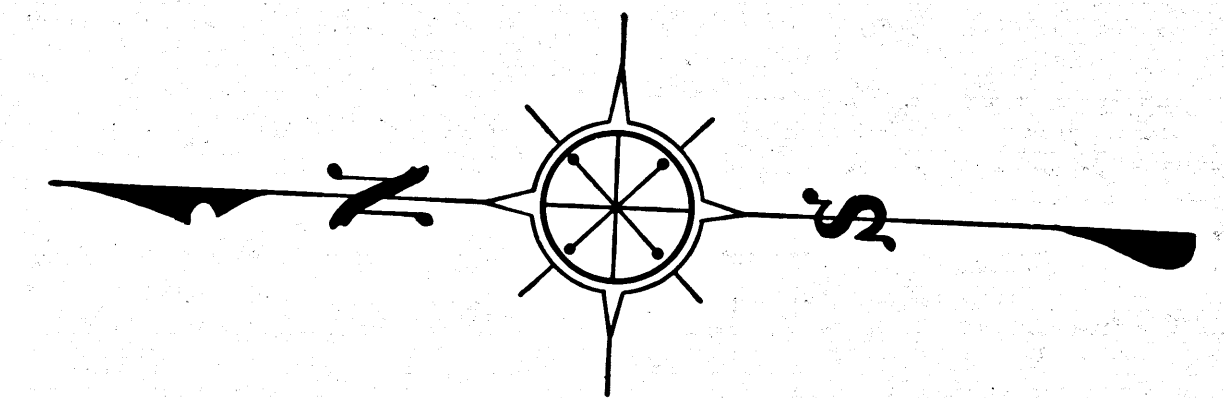
Located by E.T. Wright  
Co. Surveyor

By order of the Board of Supervisors

Road 66' Wide

Field Book 1-27-28 Index 41

RETRACED FROM THE CLOTH MOUNTED EGG-SHELL  
ORIGINAL MAP WHICH HAS BEEN DISCARDED FILED  
AT PACOIMA VAULT (Nov. 1960)  
RETRACED BY T. KARDOS FEB. 1957  
Checked by R.J.B. & B.F.



CS	3265
----	------