

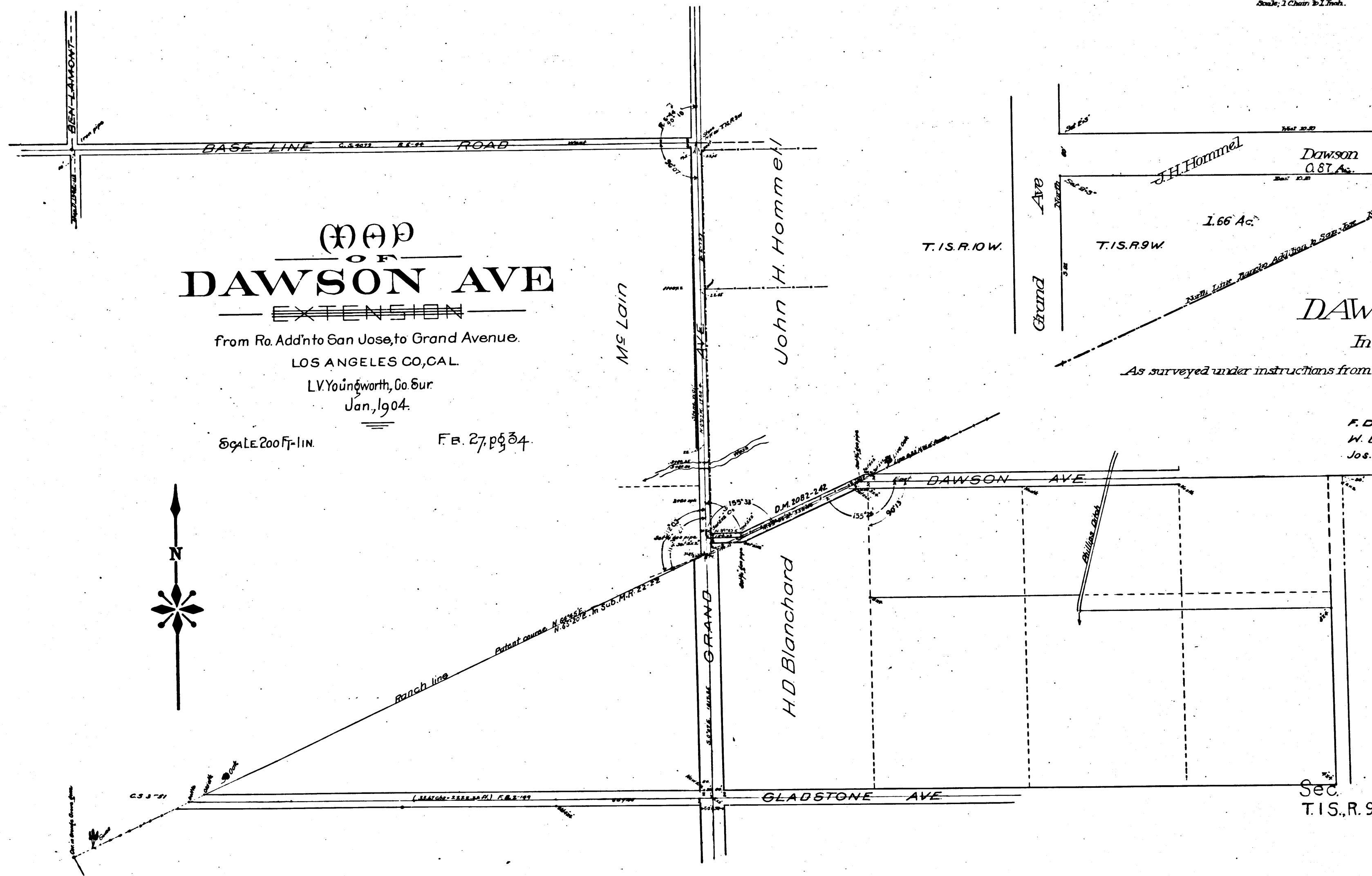
MAP
OF
DAWSON AVE
EXTENSION

from Ro. Add'nto San Jose, to Grand Avenue.
LOS ANGELES CO, CAL.

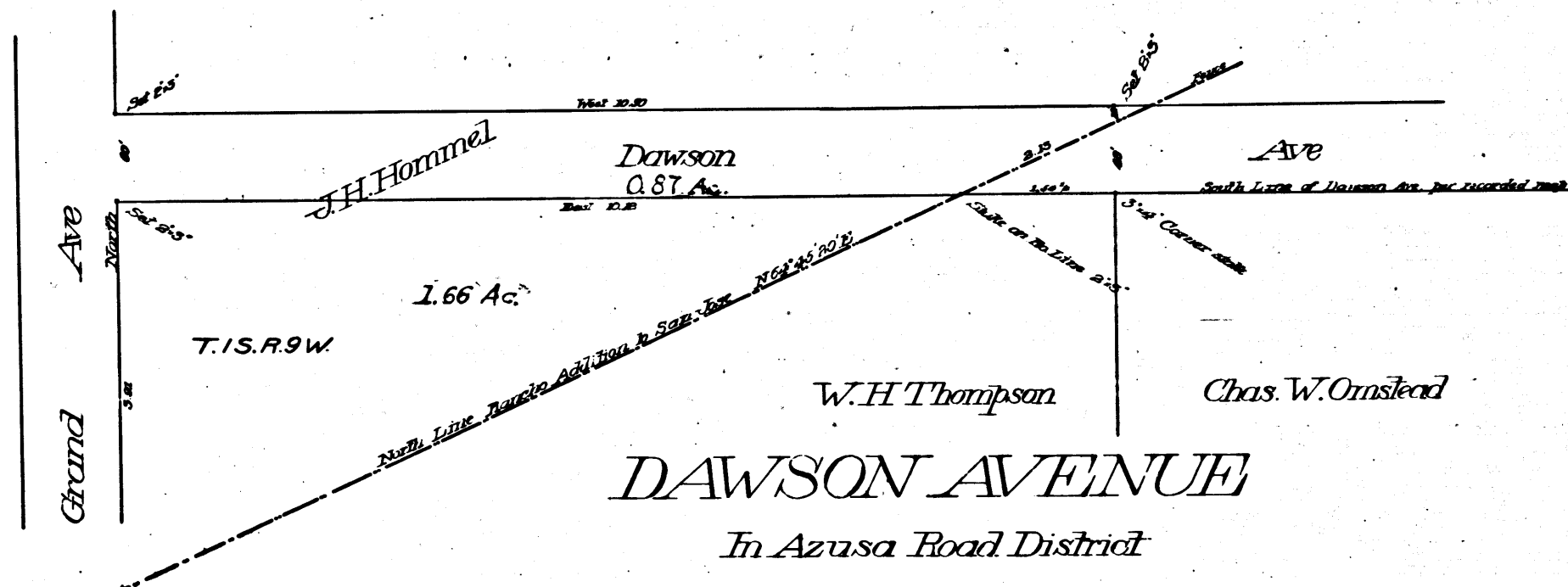
L.V. Youngworth, Co. Sur.
Jan, 1904.

Scale 200 Ft. = 1 in.

F.B. 27, p 334.



Scale: 1 Chain = 1 1/2 Inch.



As surveyed under instructions from the Hon. Board of Supervisors of L.A. County June 21, 1895

DAWSON AVENUE
In Azusa Road District

By E.T. Wright
County Surveyor
F.D. Joy
W.B. Cullen } Viewers appointed as per order of March 4, 1902
Jos. H. Smith

COUNTY SURVEYORS MAP NO. 3278
INDEX 48

THIS PHOTACT TRACING MADE SEPT. 1957 BY COMBINING
THE TWO OLD TRACING CLOTH ORIGINAL MAPS WHICH
HAVE BEEN DISCARDED.
RETOUCHED BY D. Jannopoulos DEC. 1957
CHECKED BY R.J.B.

Sec.
T.1S., R. 9W.

CS 3278