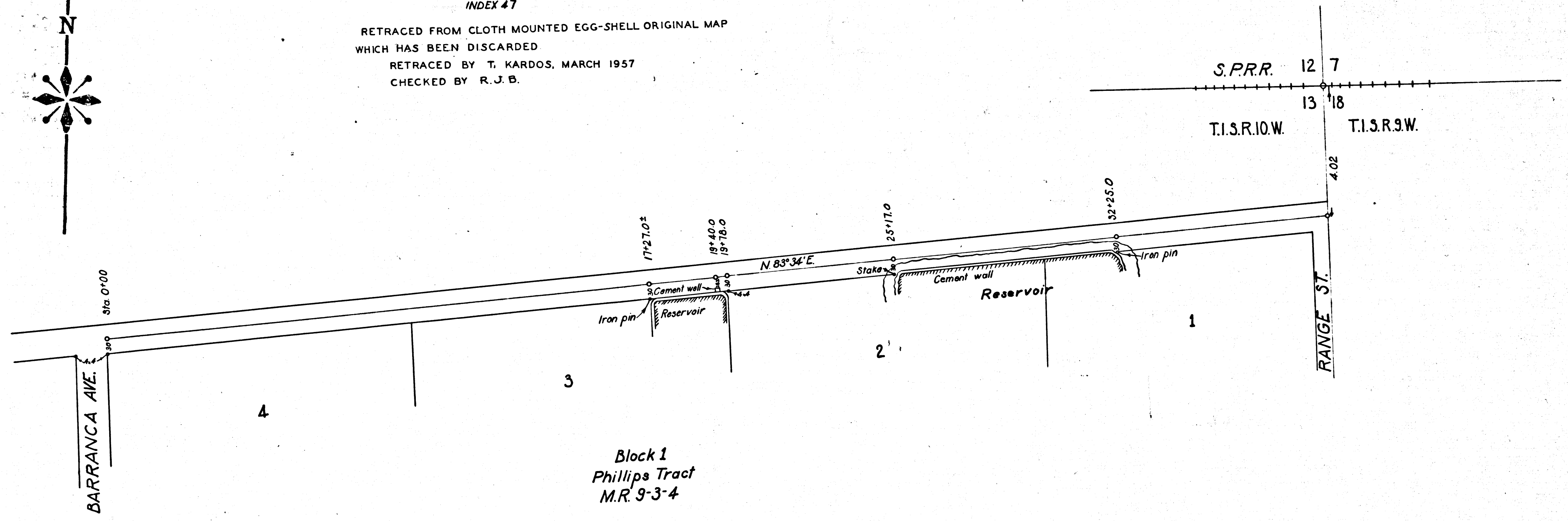


San Bernardino Road  
 North of Covina  
 County Surveyor Map No. 3281  
 Scale 1 in = 2 chs. Surveyed Oct. 24, 1895  
 F.B. 1-71 By E.T. Wright, Co. Surveyor  
 L.B. 1-27 by F.W. Shumner

INDEX 47

RETRACED FROM CLOTH MOUNTED EGG-SHELL ORIGINAL MAP  
 WHICH HAS BEEN DISCARDED  
 RETRACED BY T. KARDOS, MARCH 1957  
 CHECKED BY R. J. B.



Block 1  
 Phillips Tract  
 M.R. 9-3-4

CS 3281