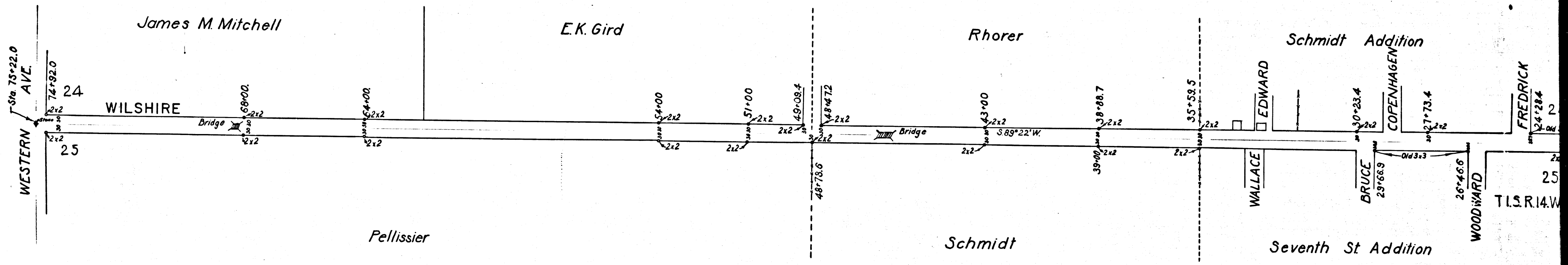


COUNTY
RETRACED
SHELL
CARDED.
RET
CHE



	CS	3	2	8	4	
	A	1	OF	A	2	

WILSHIRE BLVD.

~~Sixth St Extension~~

Surveyed Oct 23, 95

Scale 1 in = 200 ft. E.T. Wright
Co. Surveyor

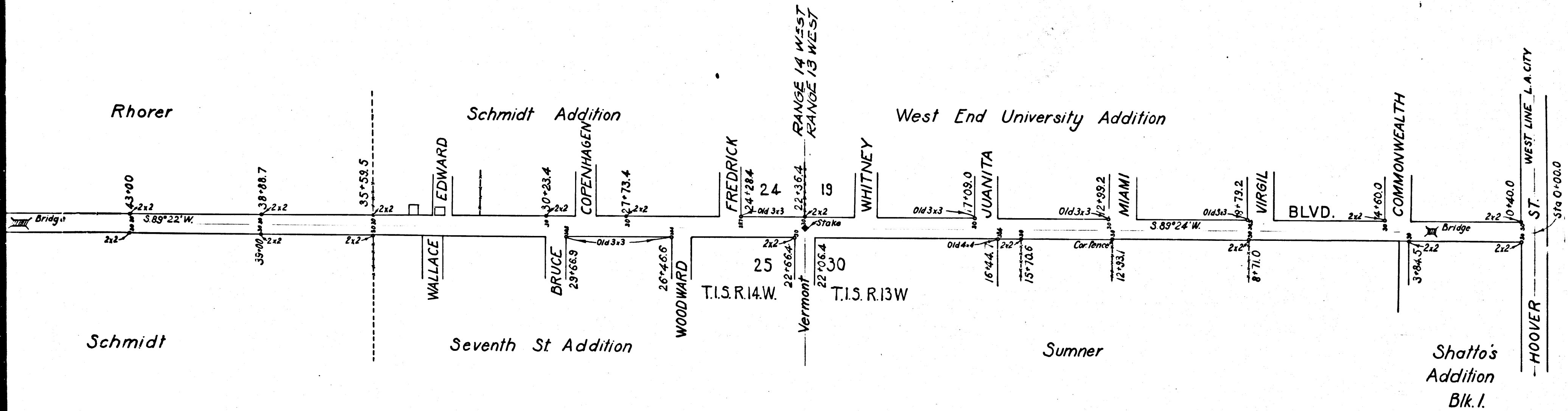
By W.B. Nicholson, Deputy

Index 9

COUNTY SURVEYORS MAP NO. 3284
RETRACED FROM THE CLOTH MOUNTED EGG-SHELL ORIGINAL MAP WHICH HAS BEEN DISCARDED.

RETRACED BY T. KARDOS FEB. 1957

CHECKED BY R.J.B.



CS	3284
A2	OF A2