

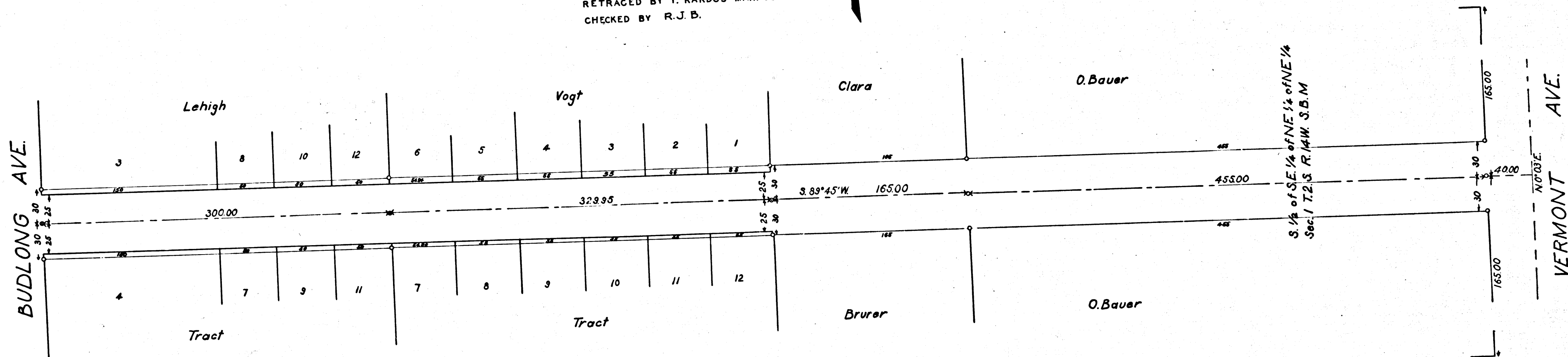
28th Street  
 Surveyed Dec. 2, 1895  
 By E. T. Wright, Co. Surveyor  
 Scale 1 in = 50 ft. W. B. Nicholson  
 Deputy

Index 9

M.R. 24-16

COUNTY SURVEYORS MAP NO. 3287  
 RETRACED FROM THE CLOTH MOUNTED  
 EGG-SHELL ORIGINAL MAP WHICH HAS  
 BEEN DISCARDED.  
 RETRACED BY T. KARDOS MAR. 1957  
 CHECKED BY R. J. B.

County Surveyor's Map No. 3287



CS 3287