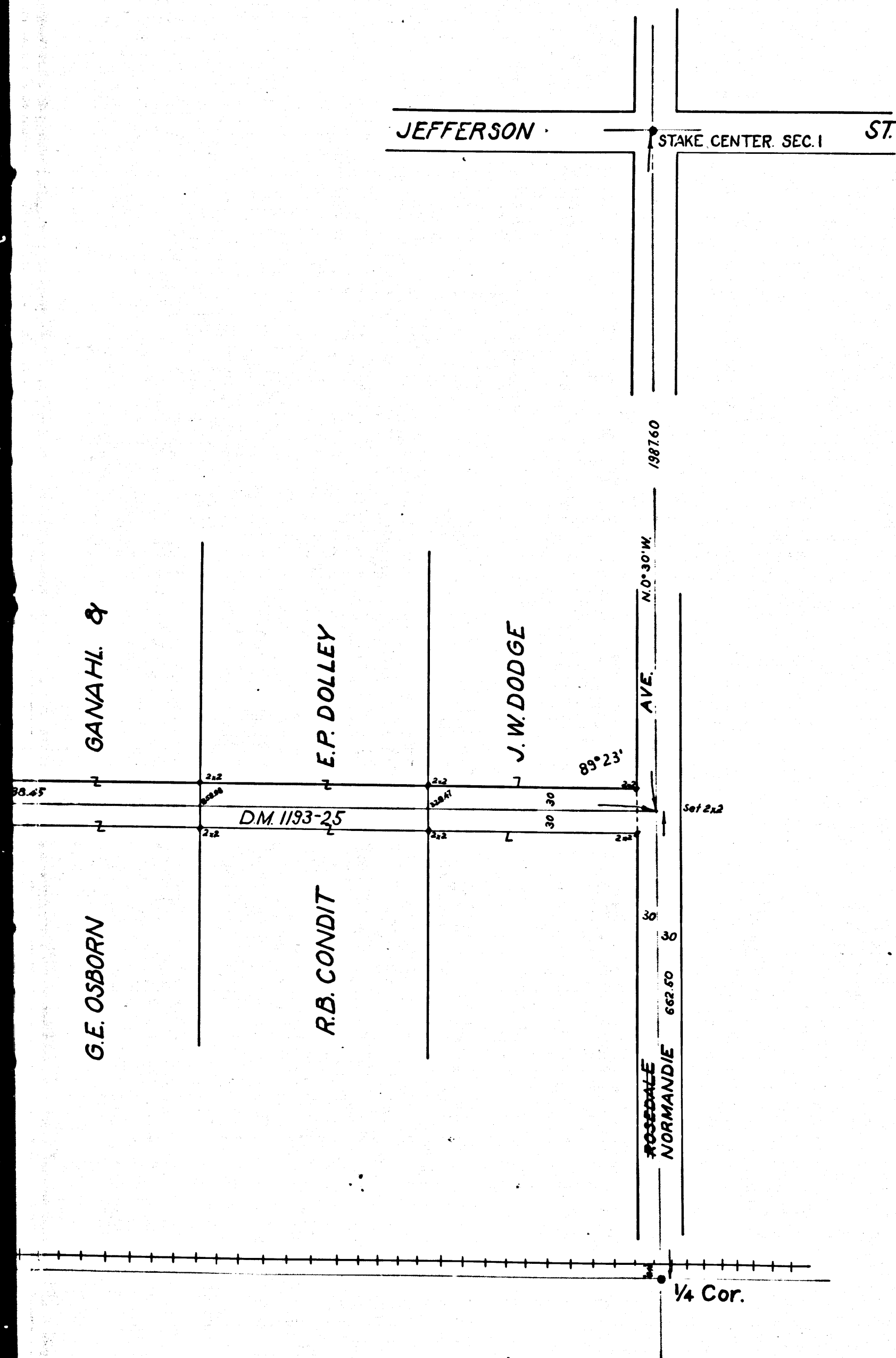


T.2.S. R.14.W.

CS	3367
A1	OF A2



37th Place
~~40th Street~~

Normandie
 From ~~Rosedale~~ Ave. to Western Avenue
 County Surveyors Map No. 3367
 Surveyed under instructions from the Hon. Board of Supervisors
 Dec. 1896
 E.T. Wright
 County Surveyor
 Scale, 150' = 1"
 Note Book 12, Page 6
 Index 9

RETRACED FROM THE WHITE BOND PAPER
 ORIGINAL MAP WHICH HAS BEEN DISCARDED.
 RETRACED BY T. KARDOS, MARCH, 1957
 CHECKED BY R.J.B.

CS	3367
A2	OF A2