

— Memoranda Plats —

Location of fences etc. on South line of Rancho Las Cienegas

F.B.11-68 Dec. 1896

Scale 1000' = 1"

RETRACED FROM THE WHITE BOND PAPER
ORIGINAL MAP WHICH HAS BEEN DISCARDED.

RETRACED BY T. KARDOS, APRIL, 1957

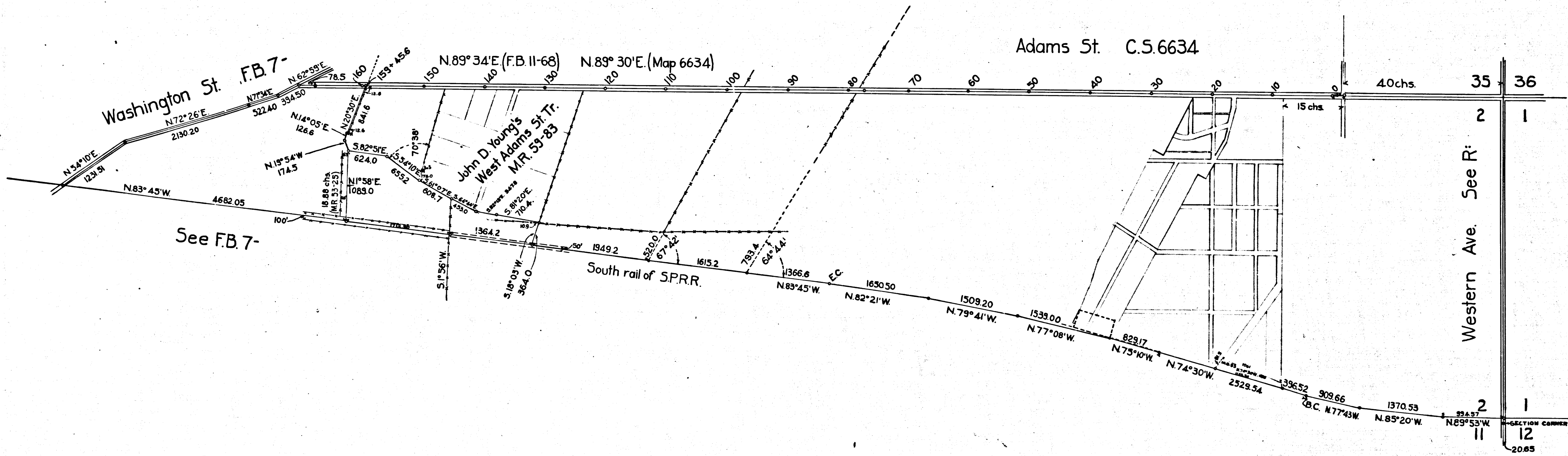
CHECKED BY R.J.B.

County Surveyors Map No. 3384

L.M. 22, 9



This map was platted to help locate old rancho lines, but more information is needed.



C S | 3 3 8 4 |